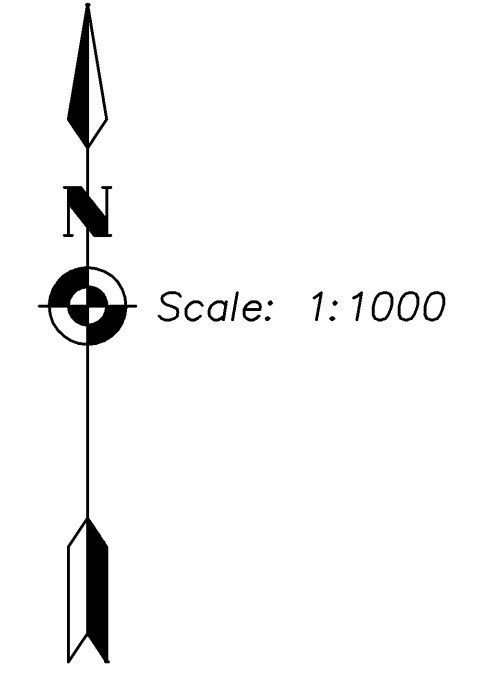
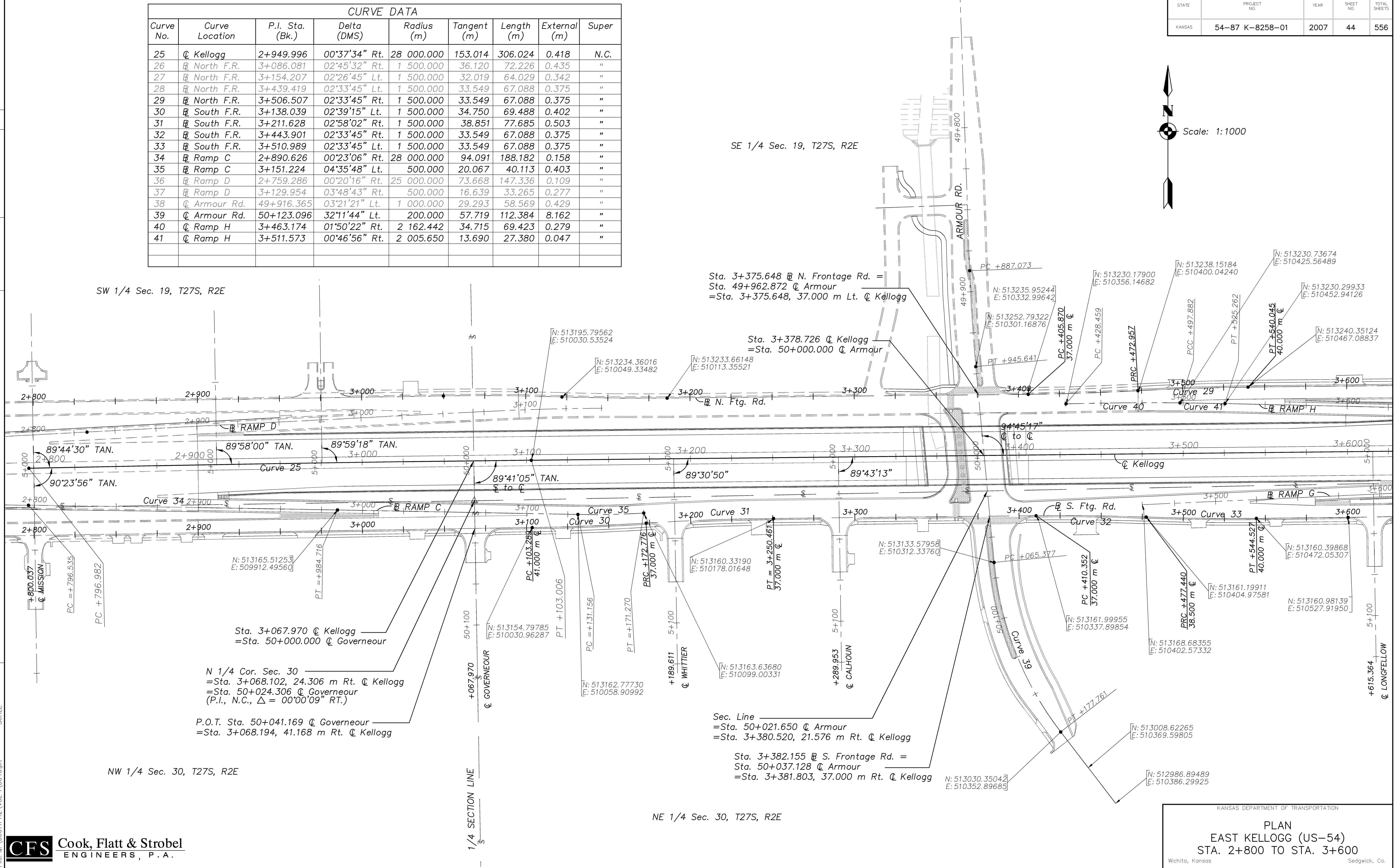


STATE	PROJECT NO.	YEAR	SHEET NO.	TOTAL SHEETS
KANSAS	54-87 K-8258-01	2007	44	556

CURVE DATA								
Curve No.	Curve Location	P.I. Sta. (Bk.)	Delta (DMS)	Radius (m)	Tangent (m)	Length (m)	External (m)	Super
25	℄ Kellogg	2+949.996	00°37'34" Rt.	28 000.000	153.014	306.024	0.418	N.C.
26	℄ North F.R.	3+086.081	02°45'32" Rt.	1 500.000	36.120	72.226	0.435	"
27	℄ North F.R.	3+154.207	02°26'45" Lt.	1 500.000	32.019	64.029	0.342	"
28	℄ North F.R.	3+439.419	02°33'45" Lt.	1 500.000	33.549	67.088	0.375	"
29	℄ North F.R.	3+506.507	02°33'45" Rt.	1 500.000	33.549	67.088	0.375	"
30	℄ South F.R.	3+138.039	02°39'15" Lt.	1 500.000	34.750	69.488	0.402	"
31	℄ South F.R.	3+211.628	02°58'02" Rt.	1 500.000	38.851	77.685	0.503	"
32	℄ South F.R.	3+443.901	02°33'45" Rt.	1 500.000	33.549	67.088	0.375	"
33	℄ South F.R.	3+510.989	02°33'45" Lt.	1 500.000	33.549	67.088	0.375	"
34	℄ Ramp C	2+890.626	00°23'06" Rt.	28 000.000	94.091	188.182	0.158	"
35	℄ Ramp C	3+151.224	04°35'48" Lt.	500.000	20.067	40.113	0.403	"
36	℄ Ramp D	2+759.286	00°20'16" Rt.	25 000.000	73.668	147.336	0.109	"
37	℄ Ramp D	3+129.954	03°48'43" Rt.	500.000	16.639	33.265	0.277	"
38	℄ Armour Rd.	49+916.365	03°21'21" Lt.	1 000.000	29.293	58.569	0.429	"
39	℄ Armour Rd.	50+123.096	32°11'44" Lt.	200.000	57.719	112.384	8.162	"
40	℄ Ramp H	3+463.174	01°50'22" Rt.	2 162.442	34.715	69.423	0.279	"
41	℄ Ramp H	3+511.573	00°46'56" Rt.	2 005.650	13.690	27.380	0.047	"



DATE	
BY	
REFERENCE NOTED	
REFERENCE CHECKED	



Drawn by: [Blank]  
 Plotted: [Blank]  
 File: Q:\0001PH2\VOL\CO40.plt  
 SCALE: [Blank]



KANSAS DEPARTMENT OF TRANSPORTATION  
**PLAN**  
 EAST KELLOGG (US-54)  
 STA. 2+800 TO STA. 3+600  
 Wichita, Kansas  
 Sedgwick, Co.