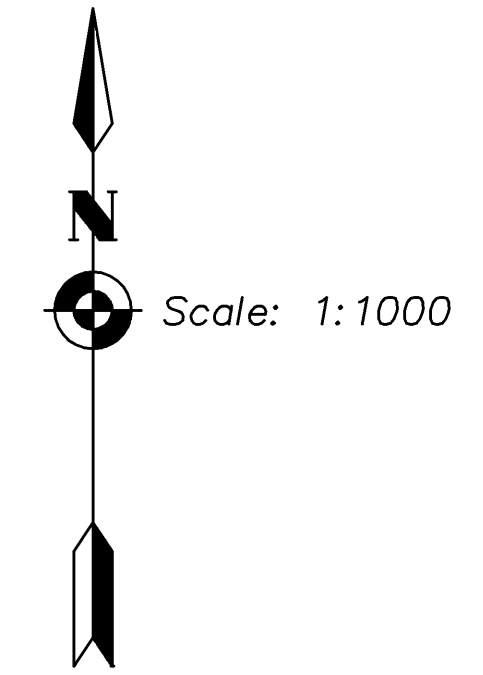


STATE	PROJECT NO.	YEAR	SHEET NO.	TOTAL SHEETS
KANSAS	54-87 K-8258-01	2007	45	556



CURVE DATA								
Curve No.	Curve Location	P.I. Sta. (Bk.)	Delta (DMS)	Radius (m)	Tangent (m)	Length (m)	External (m)	Super
42	North F.R.	3+723.842	02°33'45" Rt.	1 500.000	33.549	67.088	0.375	N.C.
43	North F.R.	3+790.929	02°33'45" Lt.	1 500.000	33.549	67.088	0.375	"
44	North F.R.	4+066.457	02°46'05" Lt.	1 500.000	36.239	72.464	0.438	"
45	North F.R.	4+138.921	02°46'05" Rt.	1 500.000	36.239	72.464	0.438	"
47	South F.R.	3+633.946	02°33'45" Lt.	1 500.000	33.549	67.088	0.375	"
48	South F.R.	3+701.034	02°33'45" Rt.	1 500.000	33.549	67.088	0.375	"
49	South F.R.	4+104.305	01°48'43" Rt.	1 500.000	23.720	47.436	0.188	"
50	South F.R.	4+151.741	01°48'43" Lt.	1 500.000	23.720	47.436	0.188	"
51	South F.R.	4+299.177	01°48'43" Lt.	1 500.000	23.720	47.436	0.188	"
52	South F.R.	4+346.614	01°48'43" Rt.	1 500.000	23.720	47.436	0.188	"
53	Ramp I	4+074.674	01°36'30" Lt.	2 000.000	33.891	67.776	0.287	N.C.
54	Ramp J	4+775.698	04°04'25" Rt.	2 004.900	71.300	142.540	1.267	"
56	Ramp I	4+413.840	01°59'24" Rt.	1 934.958	33.608	67.209	0.292	"

SE 1/4 Sec. 19, T27S, R2E

SW 1/4 Sec. 20, T27S, R2E

Sta. 3+877.381 North Frontage Rd. =
 P.I. Sta. 49+962.999 Rock
 =Sta. 3+877.292, 37.000 m Lt. Kellogg
 (N.C., = 00°00'03" LT.)

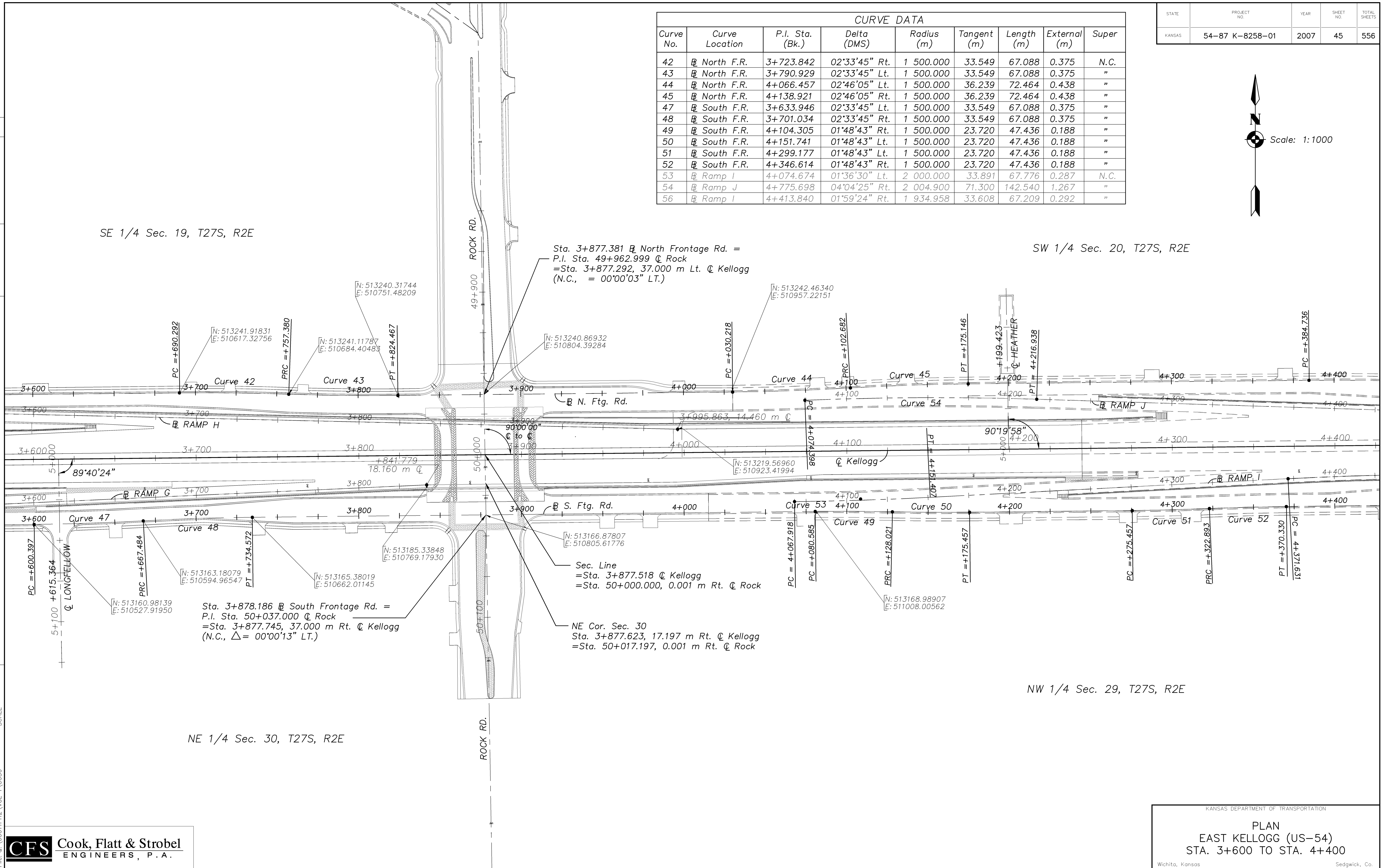
Sta. 3+878.186 South Frontage Rd. =
 P.I. Sta. 50+037.000 Rock
 =Sta. 3+877.745, 37.000 m Rt. Kellogg
 (N.C., Δ = 00°00'13" LT.)

Sec. Line
 =Sta. 3+877.518 Kellogg
 =Sta. 50+000.000, 0.001 m Rt. Rock

NE Cor. Sec. 30
 Sta. 3+877.623, 17.197 m Rt. Kellogg
 =Sta. 50+017.197, 0.001 m Rt. Rock

NW 1/4 Sec. 29, T27S, R2E

NE 1/4 Sec. 30, T27S, R2E



DATE	BY

REFERENCE NOTED	REFERENCE CHECKED

Drawn by: [Name]
 File: Q:\00011PH2\VOL 1\CO50

SCALE



KANSAS DEPARTMENT OF TRANSPORTATION

PLAN
 EAST KELLOGG (US-54)
 STA. 3+600 TO STA. 4+400

Wichita, Kansas Sedgwick, Co.