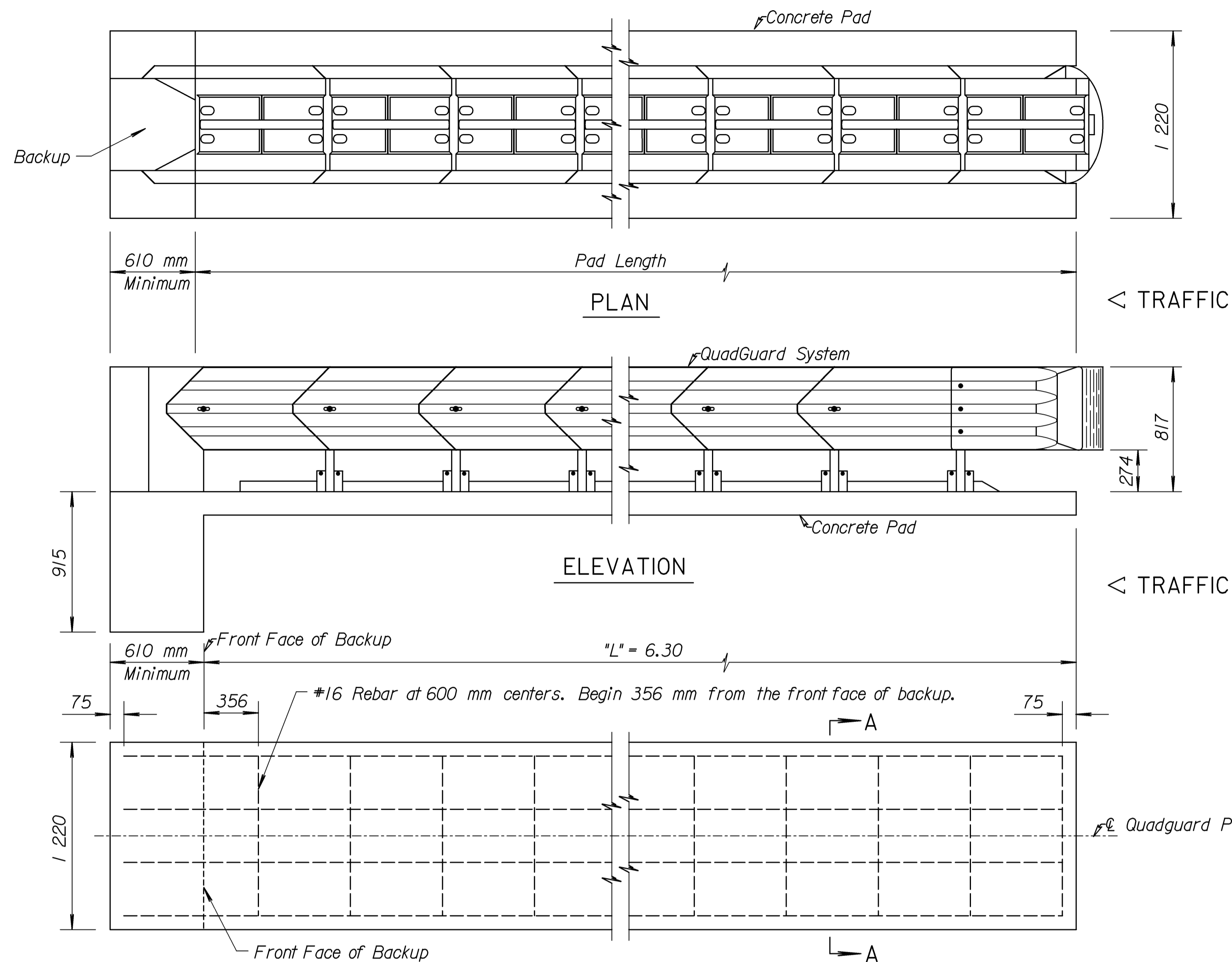
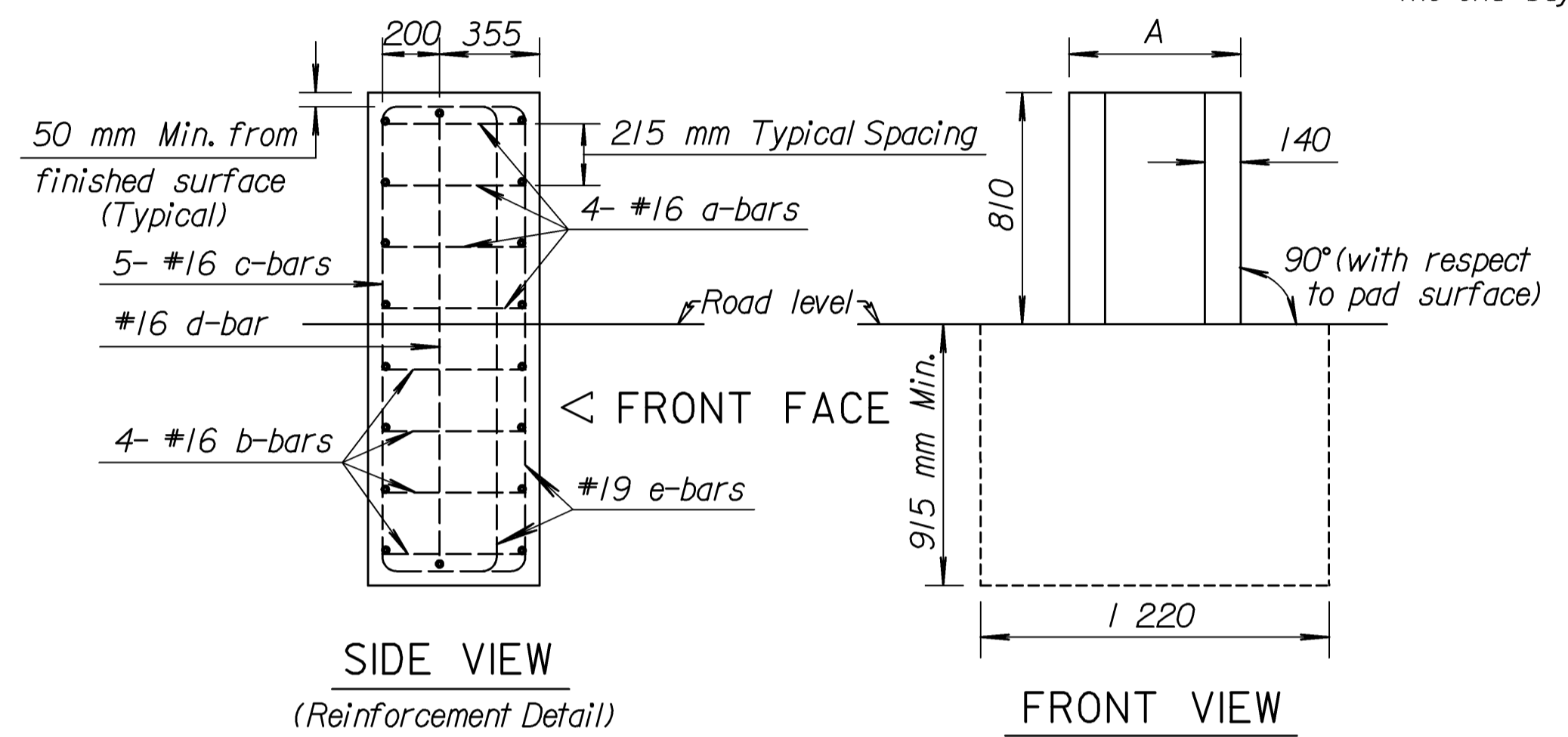
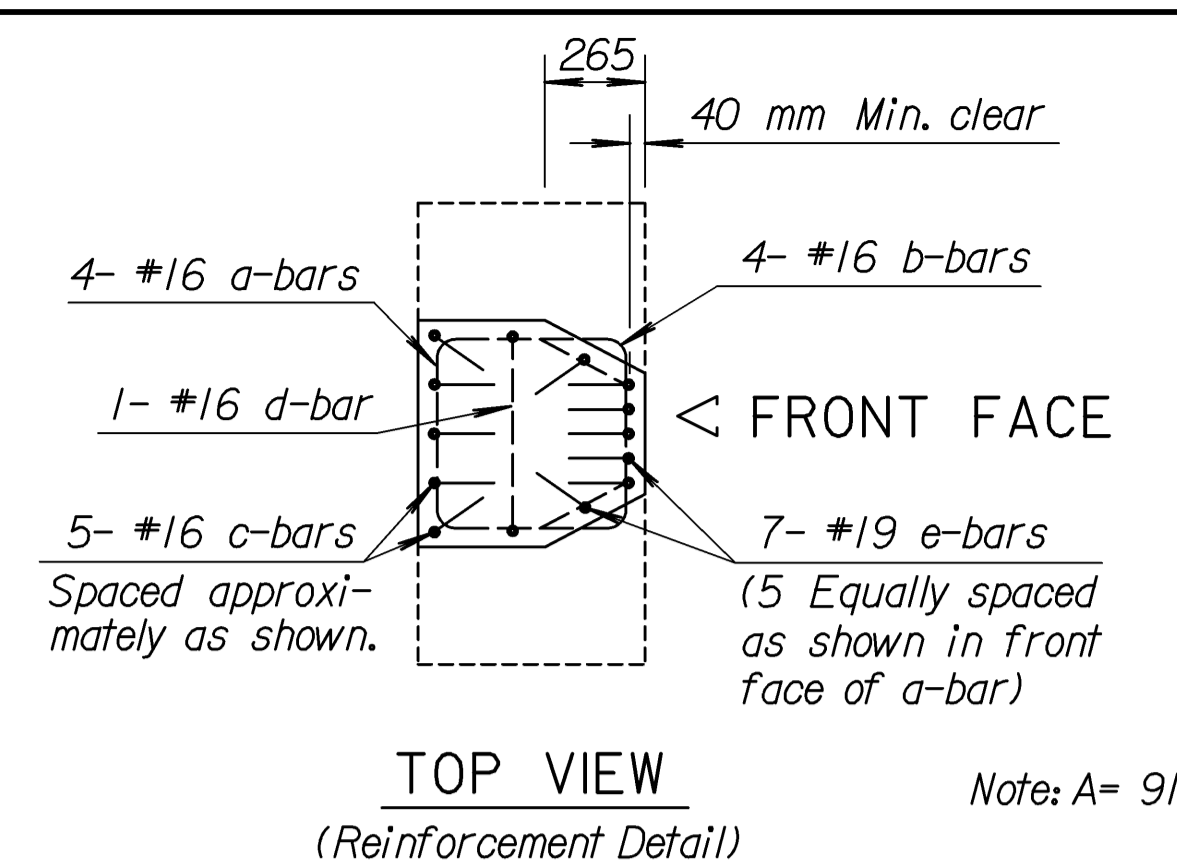


STATE	PROJECT NO.	YEAR	SHEET NO.	TOTAL SHEETS
KANSAS	54-87 K-8258-01	2007	92	556

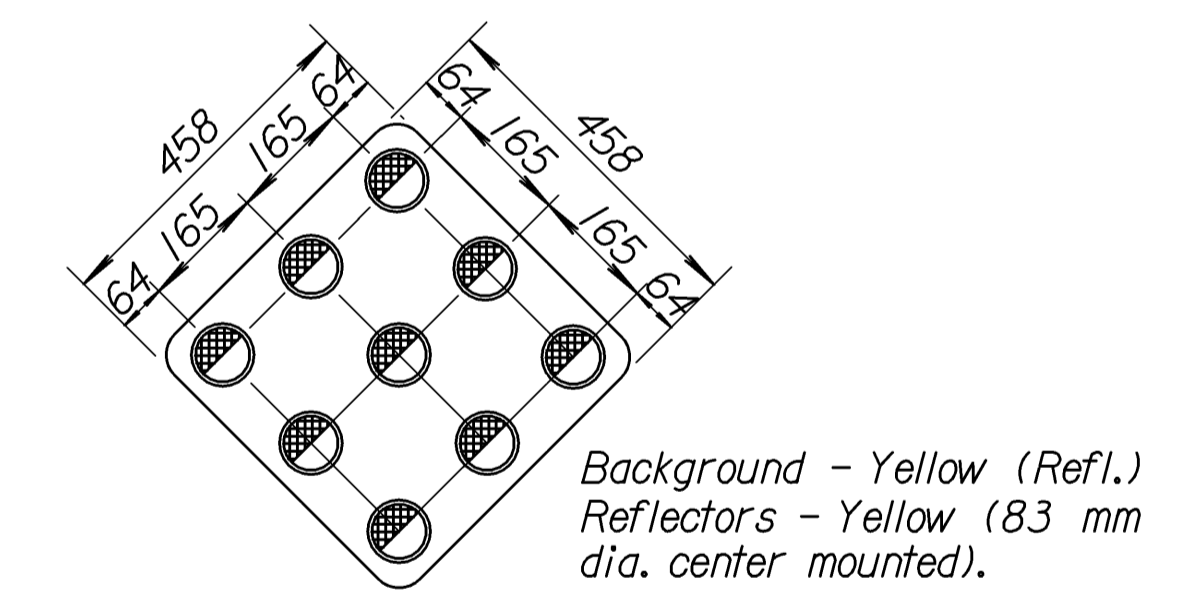
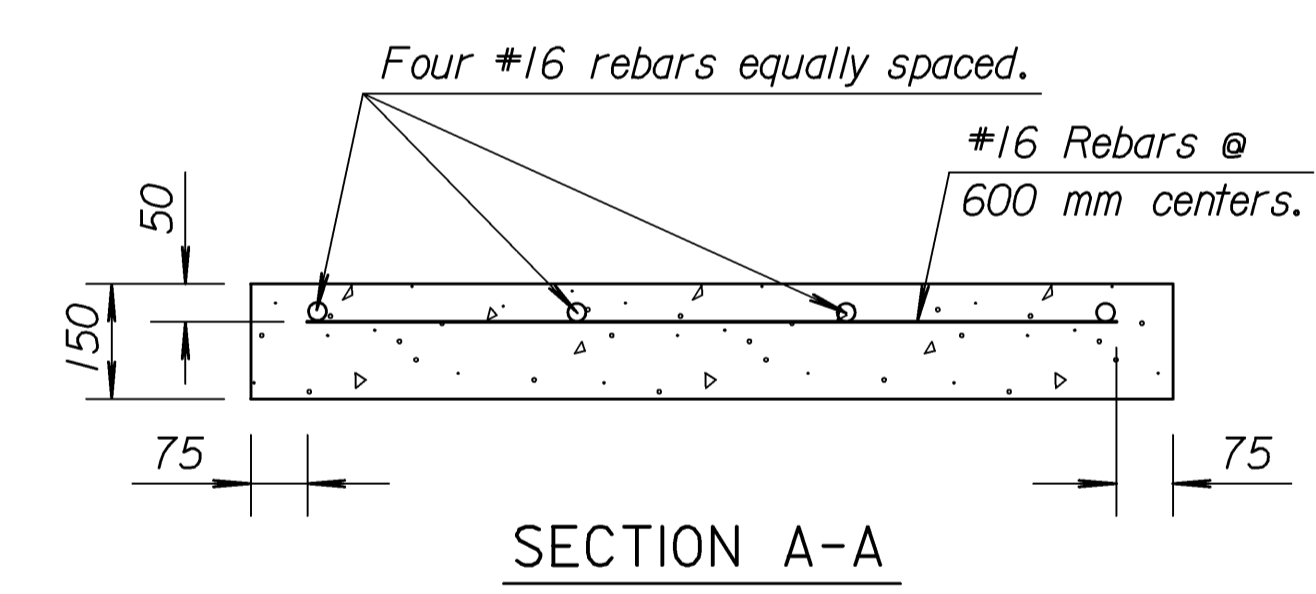
Note to the Designer: The designer shall be responsible for designating dimensions "A" and "L" and the QuadGuard model number.



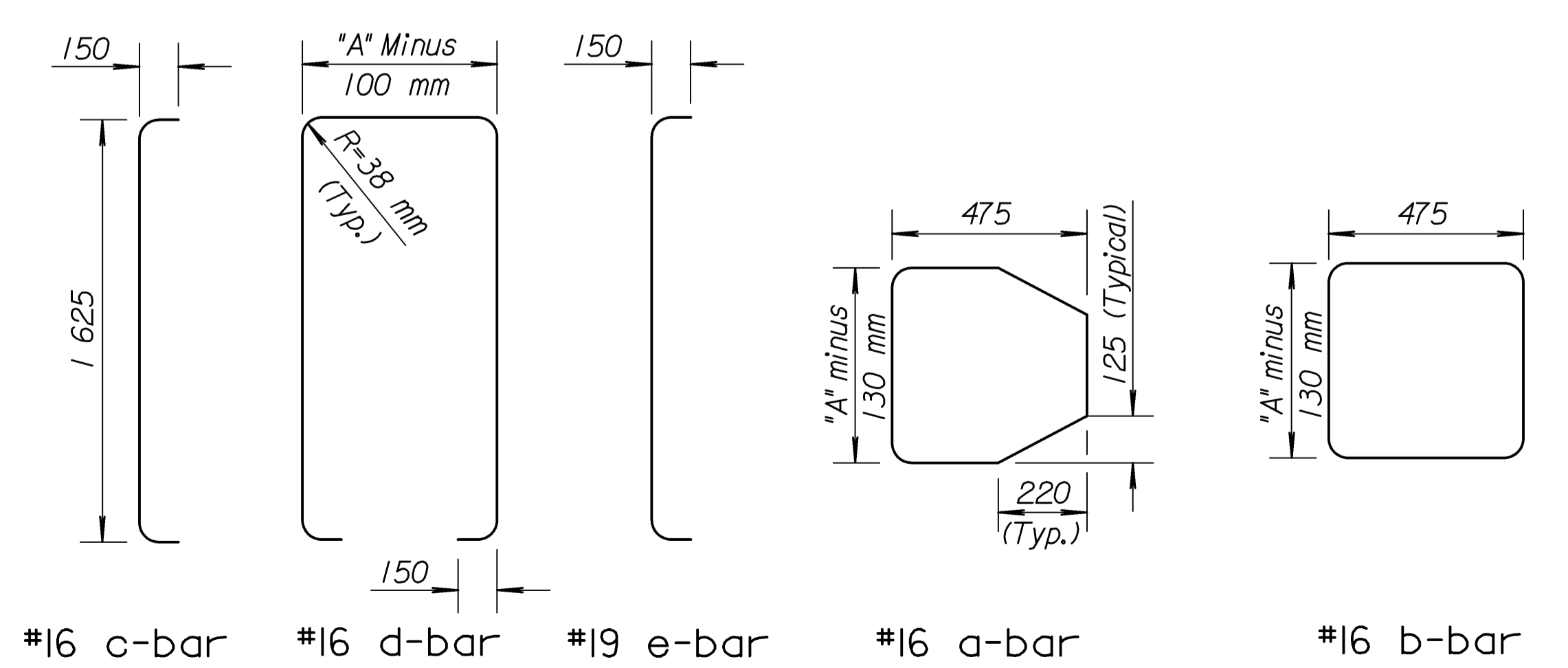
Note: Cross slope of pad shall not exceed 8% and not vary more than 2% from front to back.  
Pad and Backup Block should be tied together & poured monolithically. Concrete for pad and backup block shall have a minimum compressive strength of 28 MPa.



**CONCRETE BACKUP DETAILS**



Aluminum Sign Blanks shall be ASTM B-209 (H), Alloy 6061-T6, 5154-H38, or 5052-H38. All holes shall be 10mm in diameter.  
The 83 mm diameter yellow button delineator shall comply with the Standard Specifications.  
The type of adhesive used for reflective sheeting shall be heat activated or pressure sensitive.  
Sign face shall be covered with regular performance reflective sheefing.



All dimensions are out-to-out on bars unless otherwise noted.

3				
2				
1				
NO.	DATE	REVISIONS	BY	APP'D
KANSAS DEPARTMENT OF TRANSPORTATION				
<b>IMPACT ATTENUATOR QUADGUARD SYSTEM</b>				
<b>REVISIONS</b>				
FHWA APPROVAL	2-12-01	APP'D.	James O. Brewer	
DESIGNED	QUANTITIES	TRACED	Bowser	
DESIGN CK.	DETAIL CK.	QUAN. CK.	TRACE CK.	Seltz

Drawn By: USERNAME\$\$ Plotted: \$\$\$\$SYTIME\$\$\$\$  
File: \$\$\$\$DGN\$SPEC\$\$\$\$