

STATE	PROJECT NO.	YEAR	SHEET NO.	TOTAL SHEETS
KANSAS	54-87 K-8258-01	2007	105	556

Scale: 1:500

DATE	BY

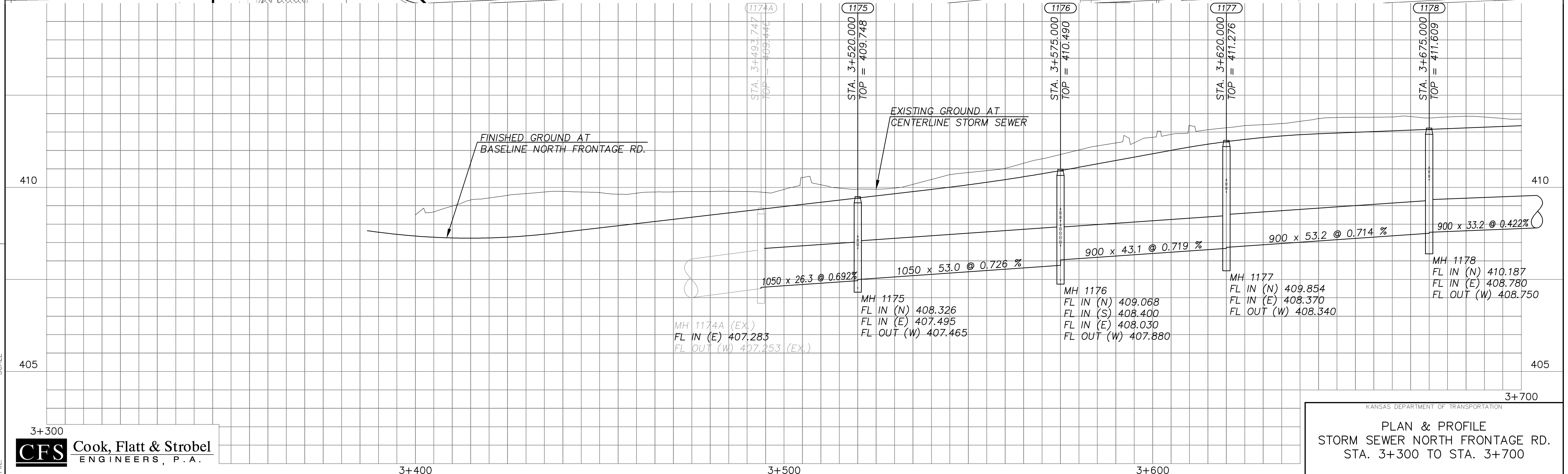
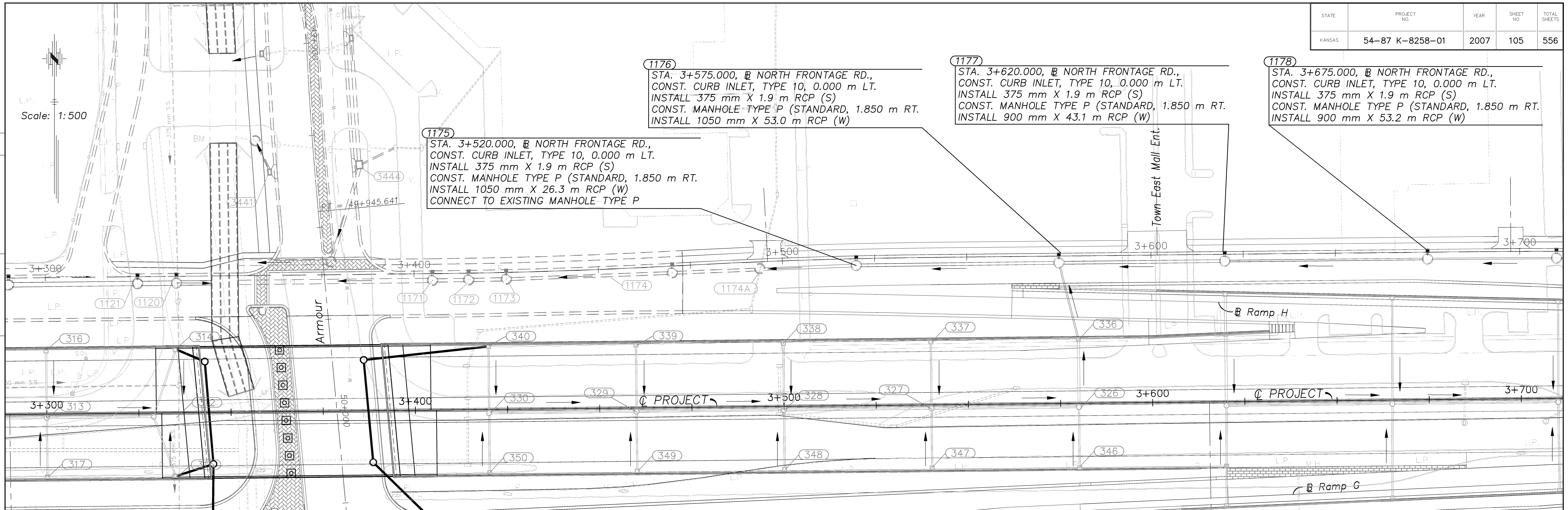
REFERENCE NOTED	REFERENCE CHECKED

1176
 STA. 3+575.000, @ NORTH FRONTAGE RD.,
 CONST. CURB INLET, TYPE 10, 0.000 m LT.
 INSTALL 375 mm X 1.9 m RCP (S)
 CONST. MANHOLE TYPE P (STANDARD, 1.850 m RT.
 INSTALL 1050 mm X 53.0 m RCP (W)

1177
 STA. 3+620.000, @ NORTH FRONTAGE RD.,
 CONST. CURB INLET, TYPE 10, 0.000 m LT.
 INSTALL 375 mm X 1.9 m RCP (S)
 CONST. MANHOLE TYPE P (STANDARD, 1.850 m RT.
 INSTALL 900 mm X 43.1 m RCP (W)

1178
 STA. 3+675.000, @ NORTH FRONTAGE RD.,
 CONST. CURB INLET, TYPE 10, 0.000 m LT.
 INSTALL 375 mm X 1.9 m RCP (S)
 CONST. MANHOLE TYPE P (STANDARD, 1.850 m RT.
 INSTALL 900 mm X 53.2 m RCP (W)

1175
 STA. 3+520.000, @ NORTH FRONTAGE RD.,
 CONST. CURB INLET, TYPE 10, 0.000 m LT.
 INSTALL 375 mm X 1.9 m RCP (S)
 CONST. MANHOLE TYPE P (STANDARD, 1.850 m RT.
 INSTALL 1050 mm X 26.3 m RCP (W)
 CONNECT TO EXISTING MANHOLE TYPE P



3+300
CFS Cook, Flatt & Strobel
 ENGINEERS, P.A.

KANSAS DEPARTMENT OF TRANSPORTATION
PLAN & PROFILE
 STORM SEWER NORTH FRONTAGE RD.
 STA. 3+300 TO STA. 3+700