

STATE	PROJECT NO.	YEAR	SHEET NO.	TOTAL SHEETS
KANSAS	54-87 K-8258-01	2007	111	556

Scale: 1:500

4101
STA. 49+699.000 @ ROCK RD.
CONST. CURB INLET, TYPE I 19.381 m RT.
(INLET OPENING 150 mm x 1 500 mm)

4101A
STA. 49+751.212 @ ROCK RD.
CONST. CURB INLET, TYPE I 22.162 m RT.
INSTALL 375 mm x 50.7 m RCP (N)
(INLET OPENING 150 mm x 1 500 mm)

4106
STA. 49+895.000 @ ROCK RD.
CONST. CURB INLET, TYPE I 23.387 m RT.
INSTALL 600 mm X 43.5 m RCP (N)
(INLET OPENING 150 mm x 1 500 mm)

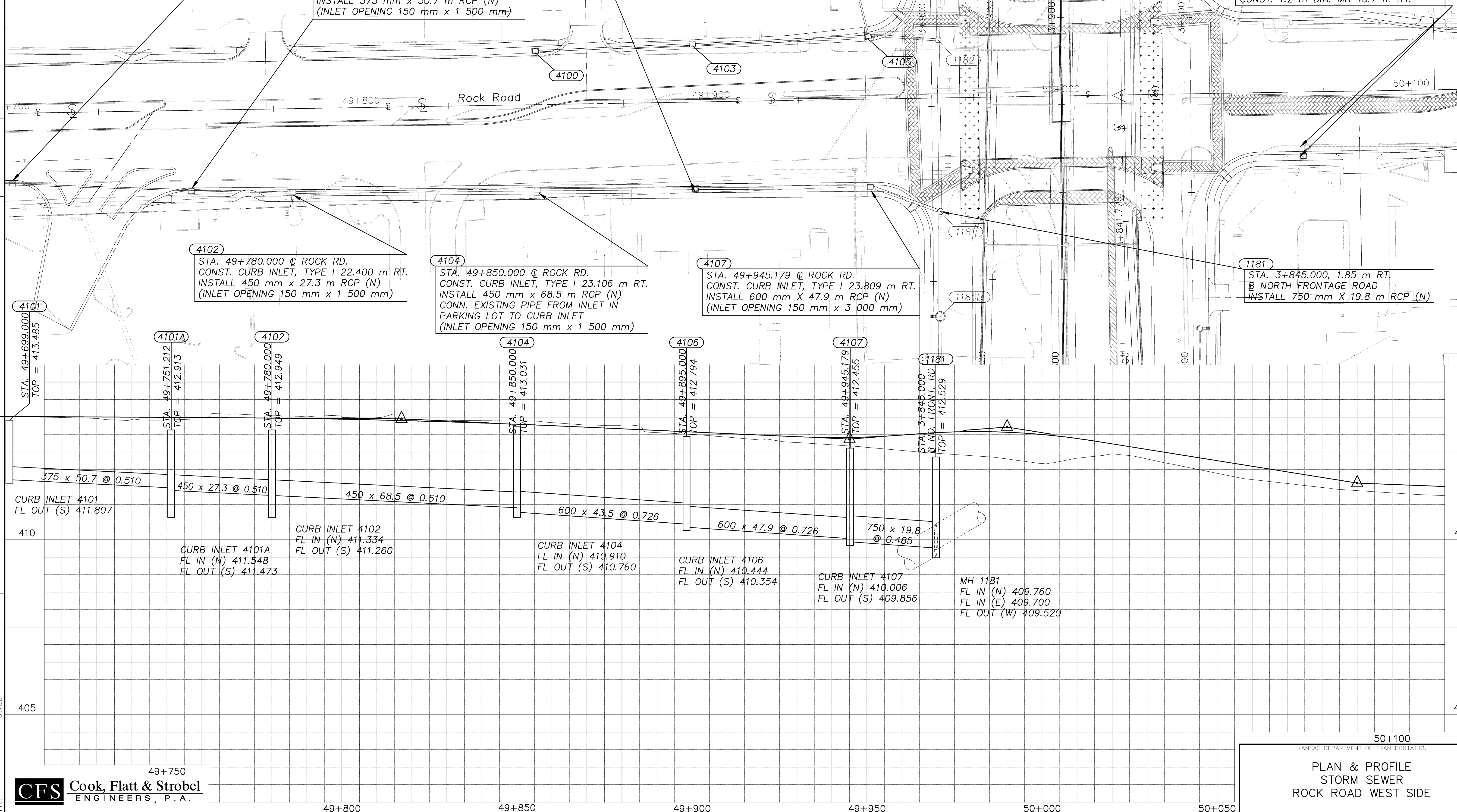
4207
STA. 50+068.831 @ ROCK RD.
REMOVE EXISTING INLET AND
CONST. CURB INLET, TYPE I 17.584 m RT.
OVER EXISTING STORM SEWER PIPE
REMOVE EXIST. STM. SEWER INLET AND
CONST. 1.2 m DIA. MH 15.7 m RT.

4102
STA. 49+780.000 @ ROCK RD.
CONST. CURB INLET, TYPE I 22.400 m RT.
INSTALL 450 mm x 27.3 m RCP (N)
(INLET OPENING 150 mm x 1 500 mm)

4104
STA. 49+850.000 @ ROCK RD.
CONST. CURB INLET, TYPE I 23.106 m RT.
INSTALL 450 mm x 68.5 m RCP (N)
CONN. EXISTING PIPE FROM INLET IN
PARKING LOT TO CURB INLET
(INLET OPENING 150 mm x 1 500 mm)

4107
STA. 49+945.179 @ ROCK RD.
CONST. CURB INLET, TYPE I 23.809 m RT.
INSTALL 600 mm X 47.9 m RCP (N)
(INLET OPENING 150 mm x 3 000 mm)

1181
STA. 3+845.000, 1.85 m RT.
NORTH FRONTAGE ROAD
INSTALL 750 mm X 19.8 m RCP (N)



DATE	BY

REFERENCE NOTED	REFERENCE CHECKED

Drawn by: _____
File: _____
Plotted: _____
SCALE: _____

CFS Cook, Flatt & Strobel
ENGINEERS, P.A.

50+100
KANSAS DEPARTMENT OF TRANSPORTATION
PLAN & PROFILE
STORM SEWER
ROCK ROAD WEST SIDE