

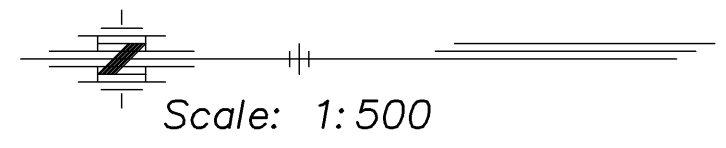
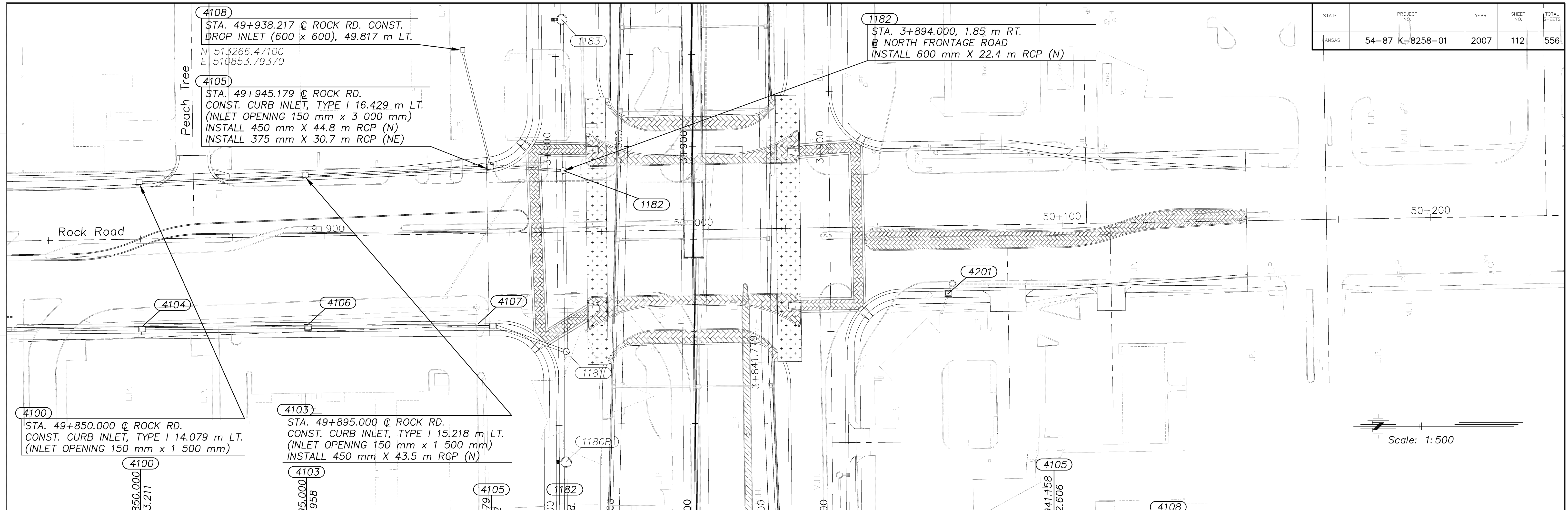
STATE	PROJECT NO.	YEAR	SHEET NO.	TOTAL SHEETS
KANSAS	54-87 K-8258-01	2007	112	556

4108
 STA. 49+938.217 @ ROCK RD. CONST.
 DROP INLET (600 x 600), 49.817 m LT.
 N 513266.47100
 E 510853.79370

4105
 STA. 49+945.179 @ ROCK RD.
 CONST. CURB INLET, TYPE I 16.429 m LT.
 (INLET OPENING 150 mm x 3 000 mm)
 INSTALL 450 mm X 44.8 m RCP (N)
 INSTALL 375 mm X 30.7 m RCP (NE)

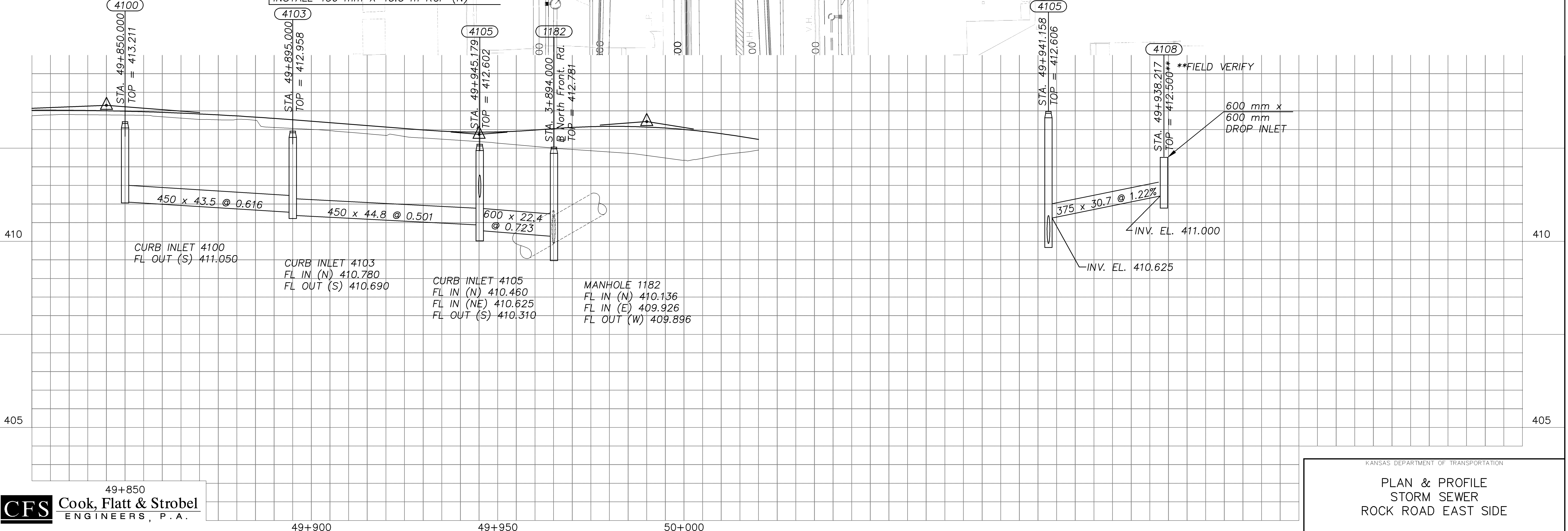
1182
 STA. 3+894.000, 1.85 m RT.
 @ NORTH FRONTAGE ROAD
 INSTALL 600 mm X 22.4 m RCP (N)

REFERENCE CHECKED



4100
 STA. 49+850.000 @ ROCK RD.
 CONST. CURB INLET, TYPE I 14.079 m LT.
 (INLET OPENING 150 mm x 1 500 mm)

4103
 STA. 49+895.000 @ ROCK RD.
 CONST. CURB INLET, TYPE I 15.218 m LT.
 (INLET OPENING 150 mm x 1 500 mm)
 INSTALL 450 mm X 43.5 m RCP (N)



Drawn by: CFS
 File: SCALE

49+850
CFS Cook, Flatt & Strobel
 ENGINEERS, P. A.

KANSAS DEPARTMENT OF TRANSPORTATION
 PLAN & PROFILE
 STORM SEWER
 ROCK ROAD EAST SIDE