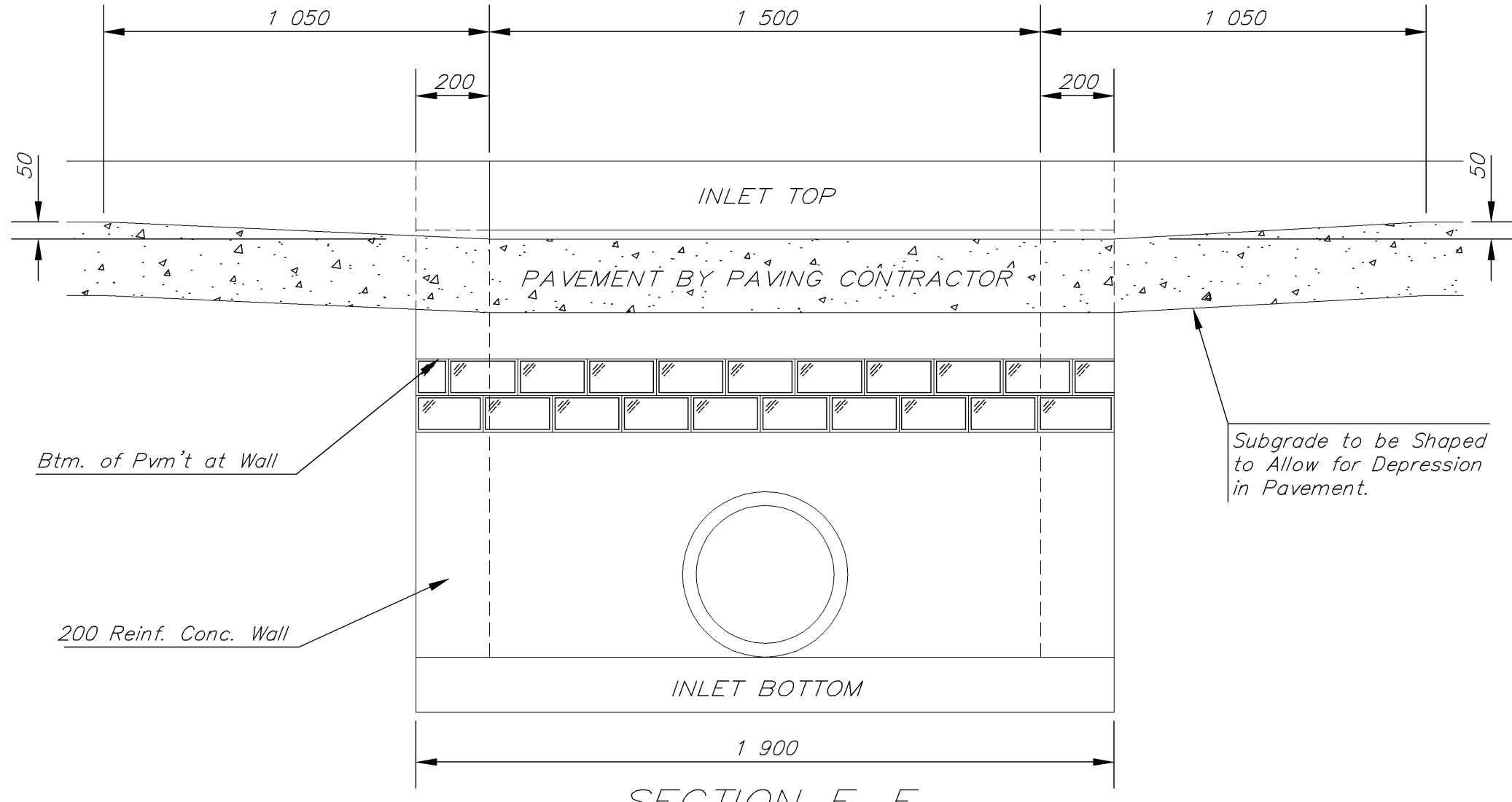
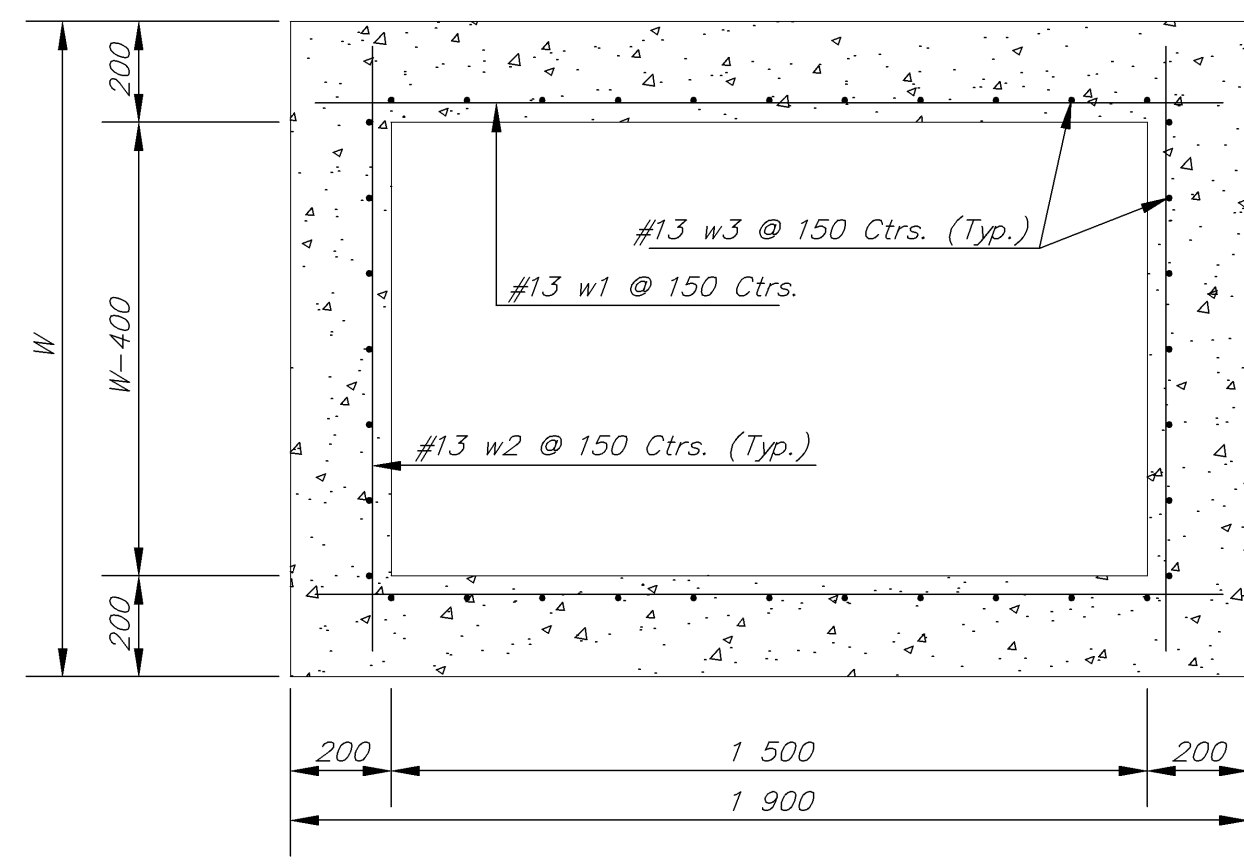


PLAN



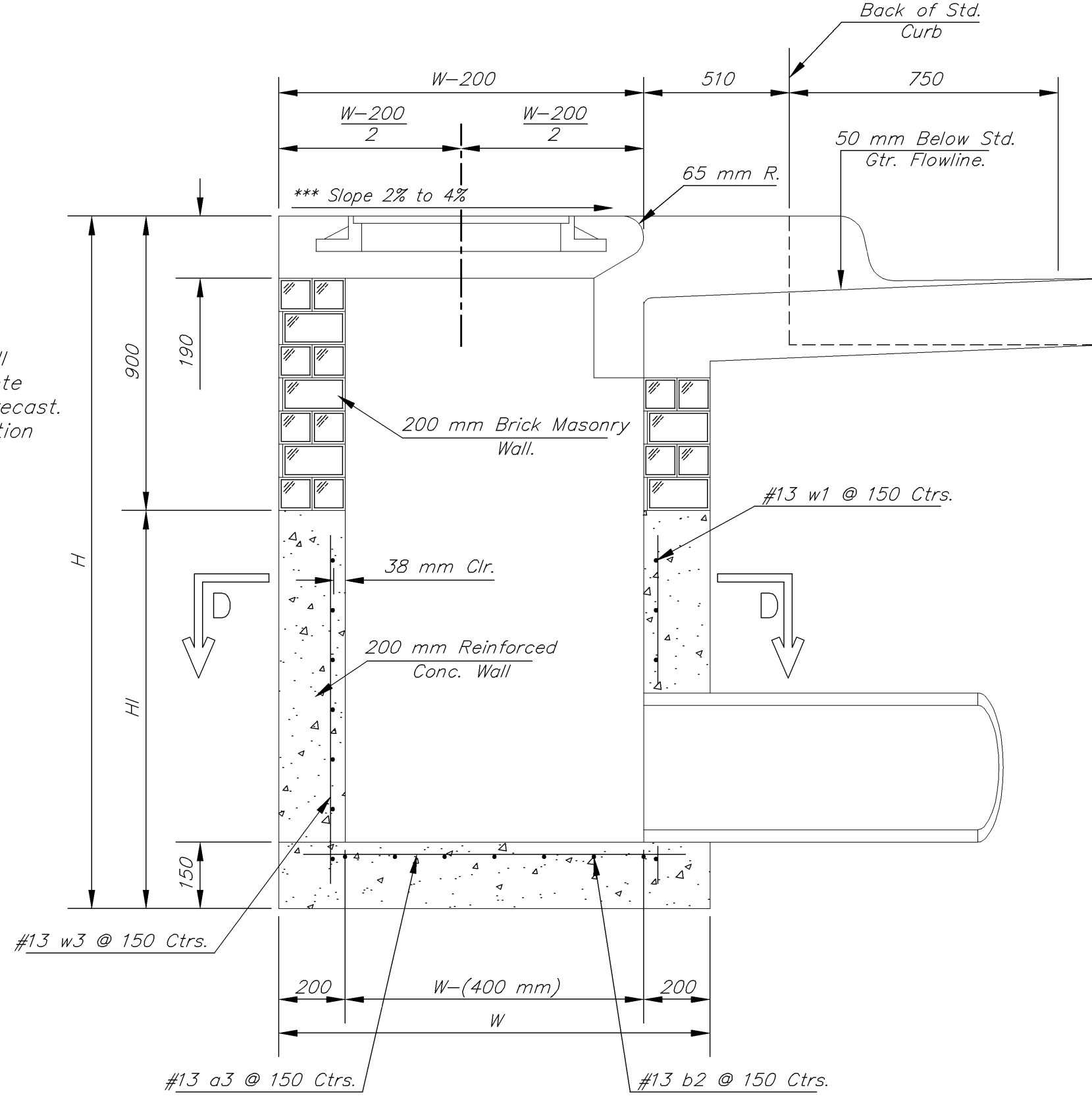
SECTION E-E



SECTION D-D

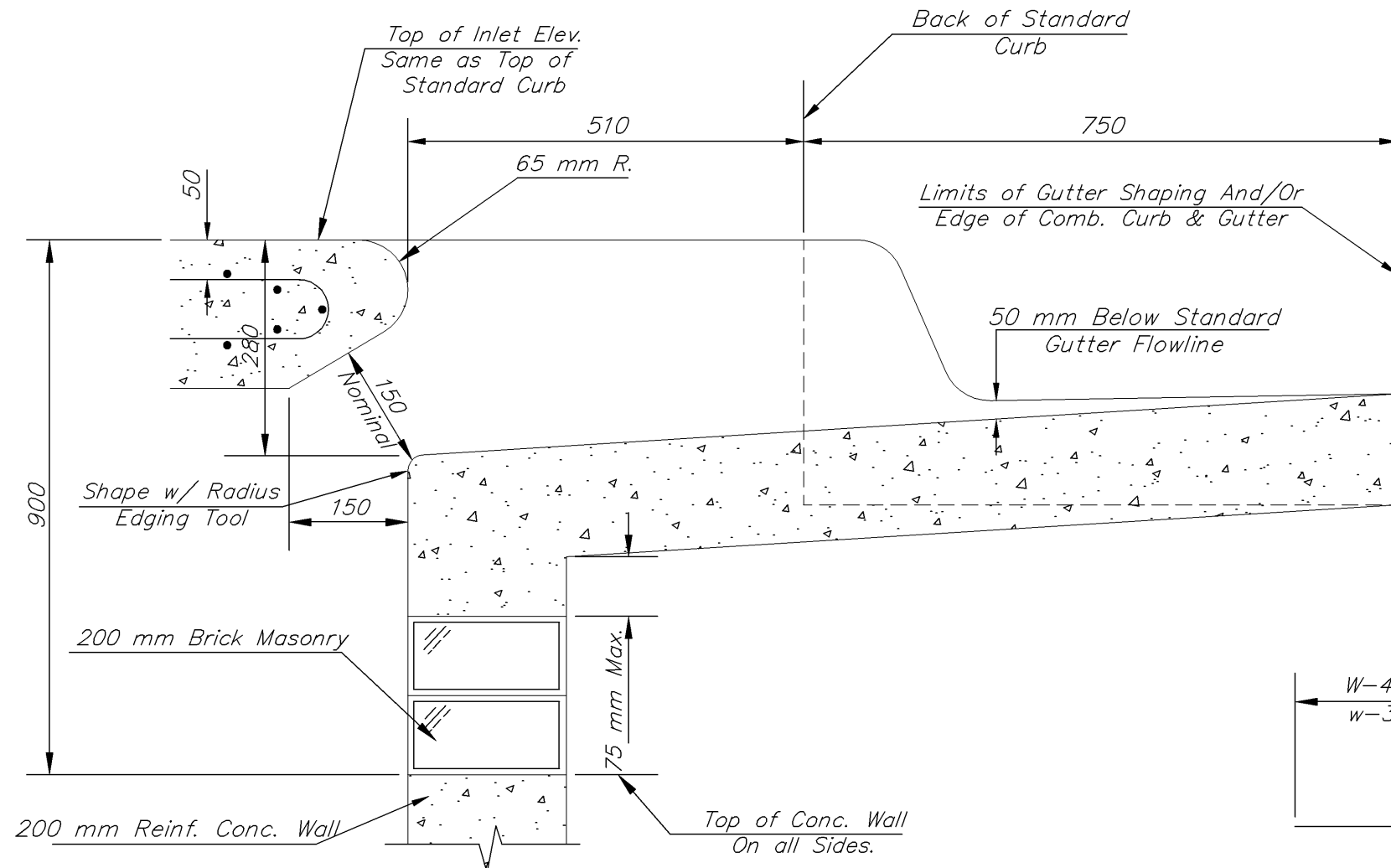
NOTE:
Inlet Top Reinforcing shall be Spaced on 150 Max. Centers. Inlet Lids Shall be Notched Out as Indicated to Facilitate Construction of Curb.

NOTE:
Concrete Taps to be installed on thin mortar cushion to insure full support along brick walls. Concrete taps may be cast in place or precast. Concrete used for inlet construction shall be concrete pavement mix with air entrainment.

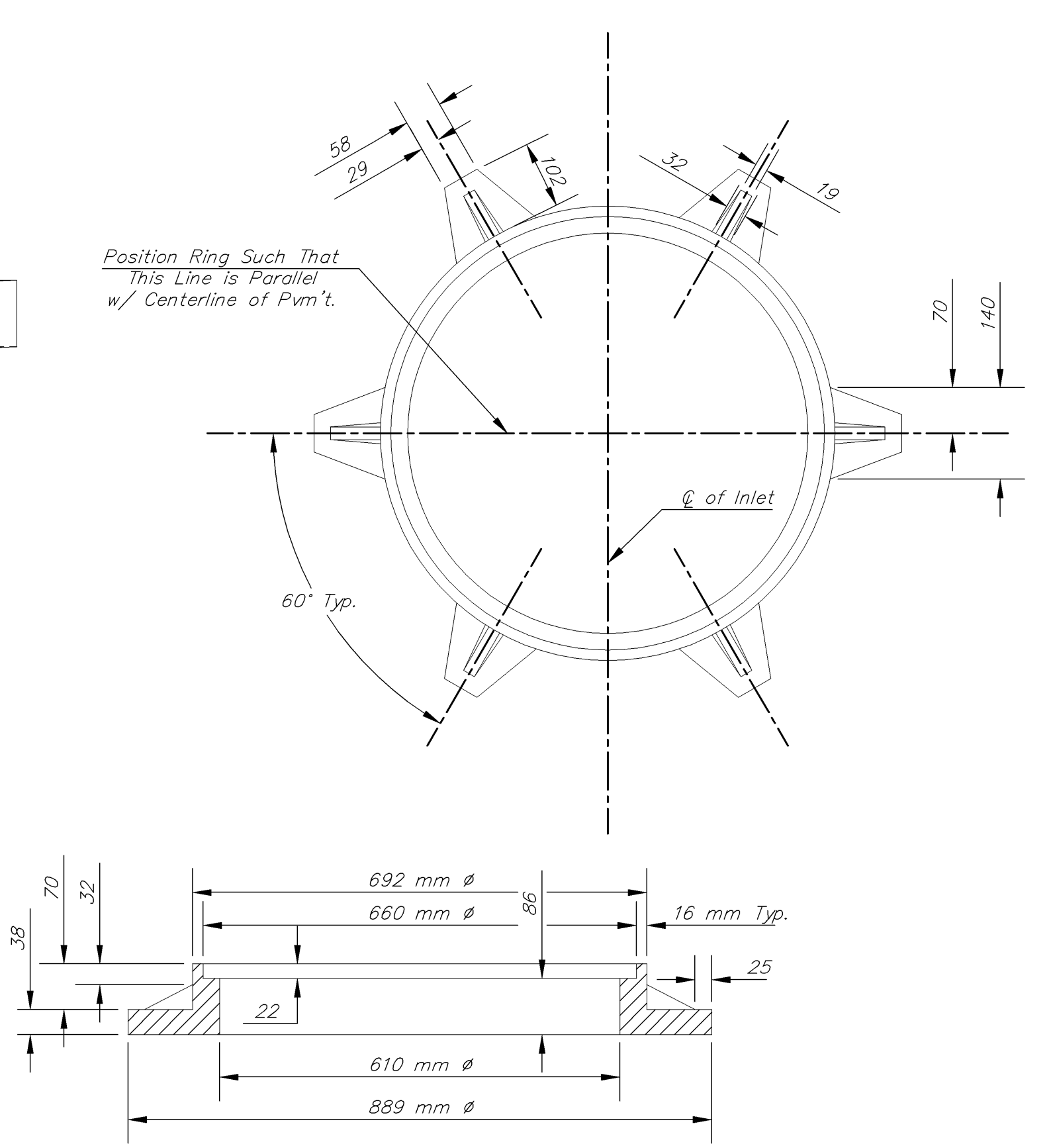


SECTION A-A

***NOTE: Slope of Inlet taps to Match Sidewalk or Parking Slopes within Limits Indicated.



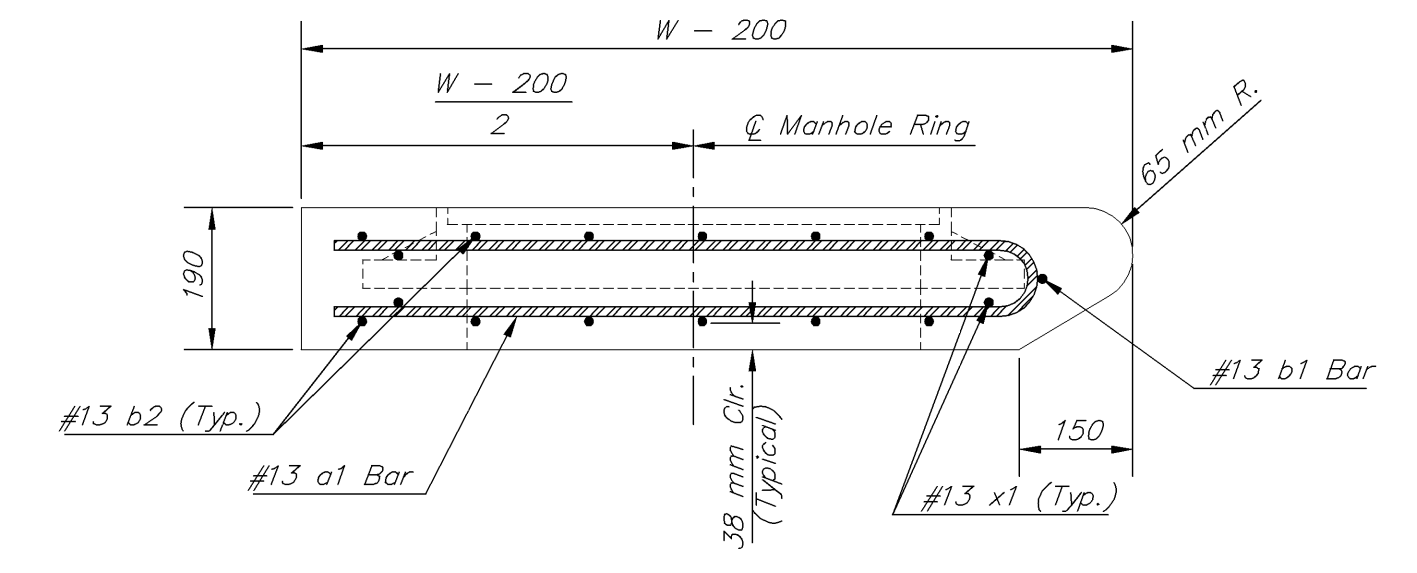
SECTION B-B



MANHOLE RING AND COVER

Weight = 81.7 kg

*See City of Wichita Standard Manhole Ring and Cover Detail Sheet for Cover Details to Be Used With Inlet Frame.

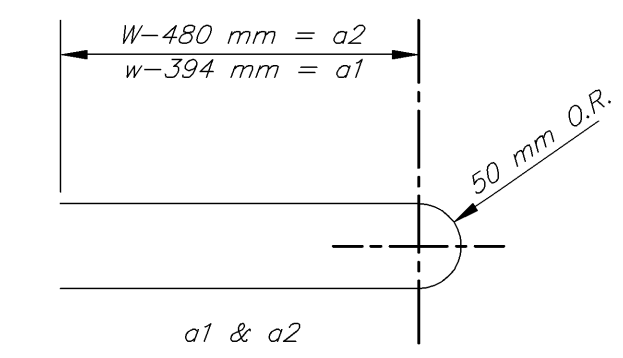


SECTION A-A

PRECAST SLAB AND FLOOR REINFORCING											
		W = 1.321 m		W = 1.625 m		W = 1.930 m		W = 2.235 m		W = 2.540 m	
MARK	SIZE	NO.	LENGTH	NO.	LENGTH	NO.	LENGTH	NO.	LENGTH	NO.	LENGTH
* a1	#13	6	2.007 m	6	2.616 m	6	3.226 m	6	3.835 m	6	4.445 m
a2	#13	4	1.829 m	4	2.438 m	4	3.048 m	4	3.658 m	4	4.267 m
a3	#13	13	1.244 m	13	1.549 m	13	1.854 m	13	2.159 m	13	2.464 m
b1	#13	1	1.448 m	1	1.448 m	1	1.448 m	1	1.448 m	1	1.448 m
* b2	#13	23	1.854 m	29	1.854 m	35	1.854 m	41	1.854 m	47	1.854 m
x1	#13	8	1.168 m	8	1.270 m	8	1.372 m	8	1.473 m	8	1.575 m

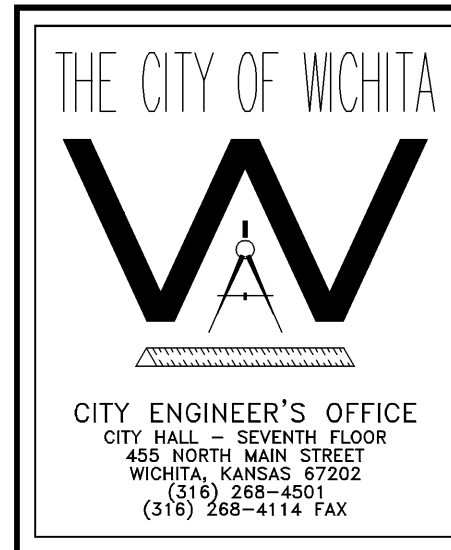
WALL REINFORCING											
		W = 1.321 m		W = 1.625 m		W = 1.930 m		W = 2.235 m		W = 2.540 m	
MARK	SIZE	NO.	LENGTH	NO.	LENGTH	NO.	LENGTH	NO.	LENGTH	NO.	LENGTH
w1	#13	①	1.854 m	①	1.854 m	①	1.854 m	①	1.854 m	①	1.854 m
w2	#13	①	1.244 m	①	1.549 m	①	1.854 m	①	2.159 m	①	2.464 m
w3	#13	②	36	②	40	②	44	②	48	②	

* Field Bend or Cut Reinforcing as Required for Clearance.
① 4 (Hl - 300 mm); (Hl - 300 mm) Rounded down to nearest 150 mm.
② Hl - 75 mm



BENDING DIAGRAM

STANDARD CURB INLET PRECAST TOPS			
W	PRE-CAST TOP SIZE	PIPE SIZE	cu m CONC.
1.321 m	1,121 m x 1,900 m x 190 mm	525 mm & SMALLER	0.29±
1.625 m	1,425 m x 1,900 m x 190 mm	600 & 750 mm	0.39±
1.930 m	1,730 m x 1,900 m x 190 mm	900 & 1,050 mm	0.49±
2.235 m	2,035 m x 1,900 m x 190 mm	1,200 & 1,350 mm	0.59±
2.540 m	2,340 m x 1,900 m x 190 mm	1,500 & 1,650 mm	0.69±



**STANDARD TYPE 1-A
CURB INLET**
OPENING = 150 x 1 500 mm

M. E. LINDEBAK P.E. - CITY ENGINEER

PROJECT NUMBER _____ INDEX CODE _____

DATE MAR 96 SHEET 119 OF 556

TYP1A-S.DWG