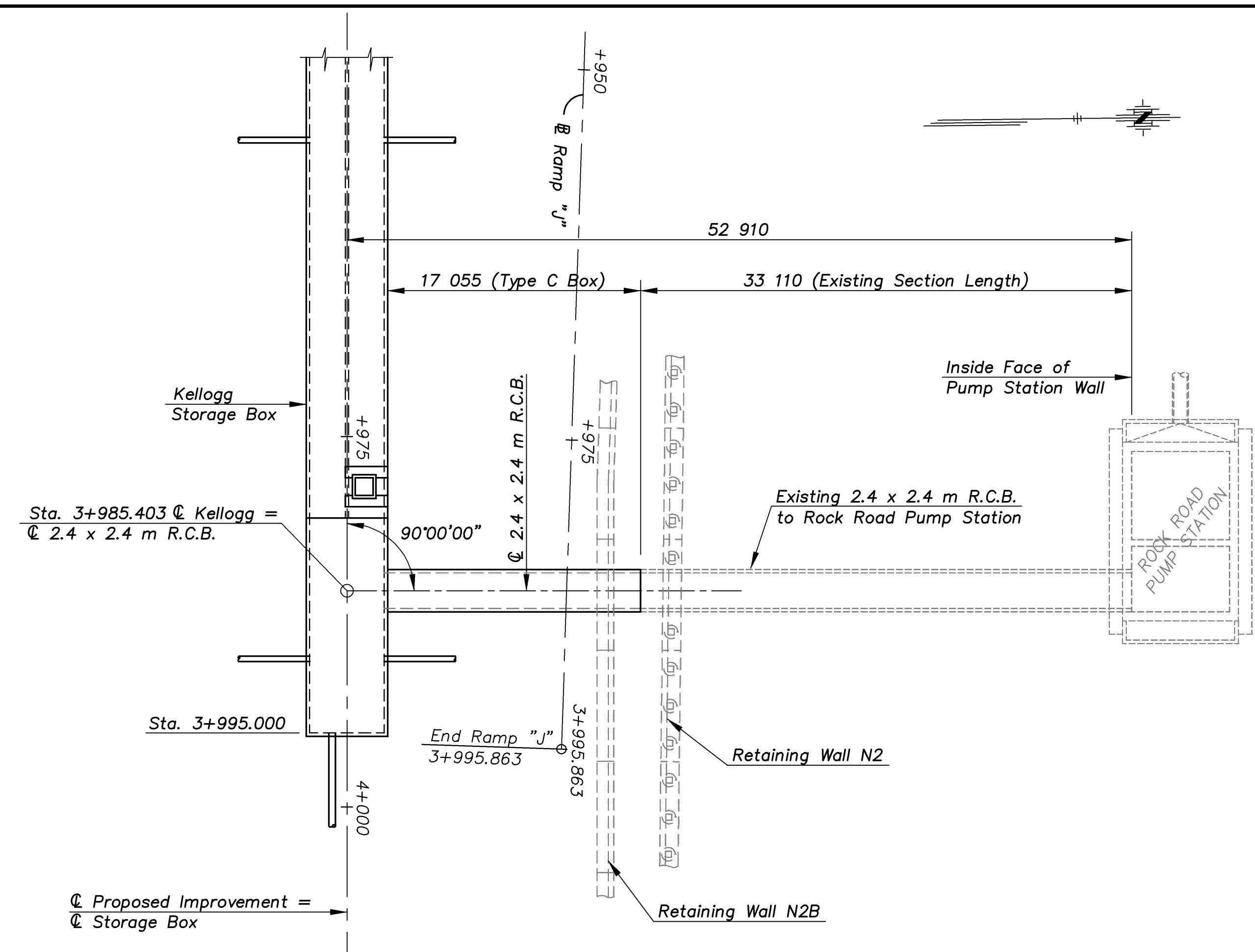
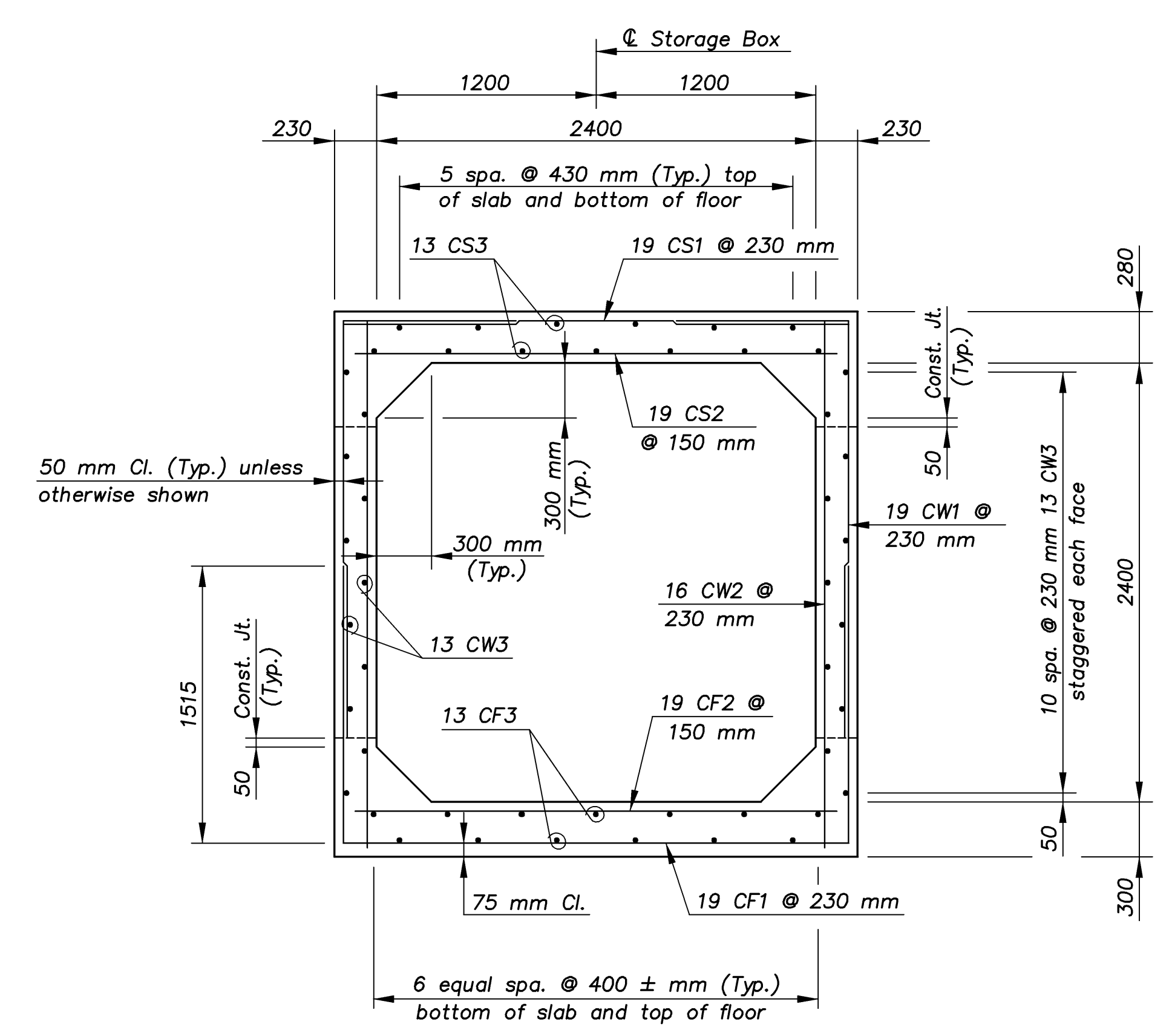


E.F. INDICATES EACH FACE.  
 N.F. INDICATES NEAR FACE.  
 F.F. INDICATES FAR FACE.

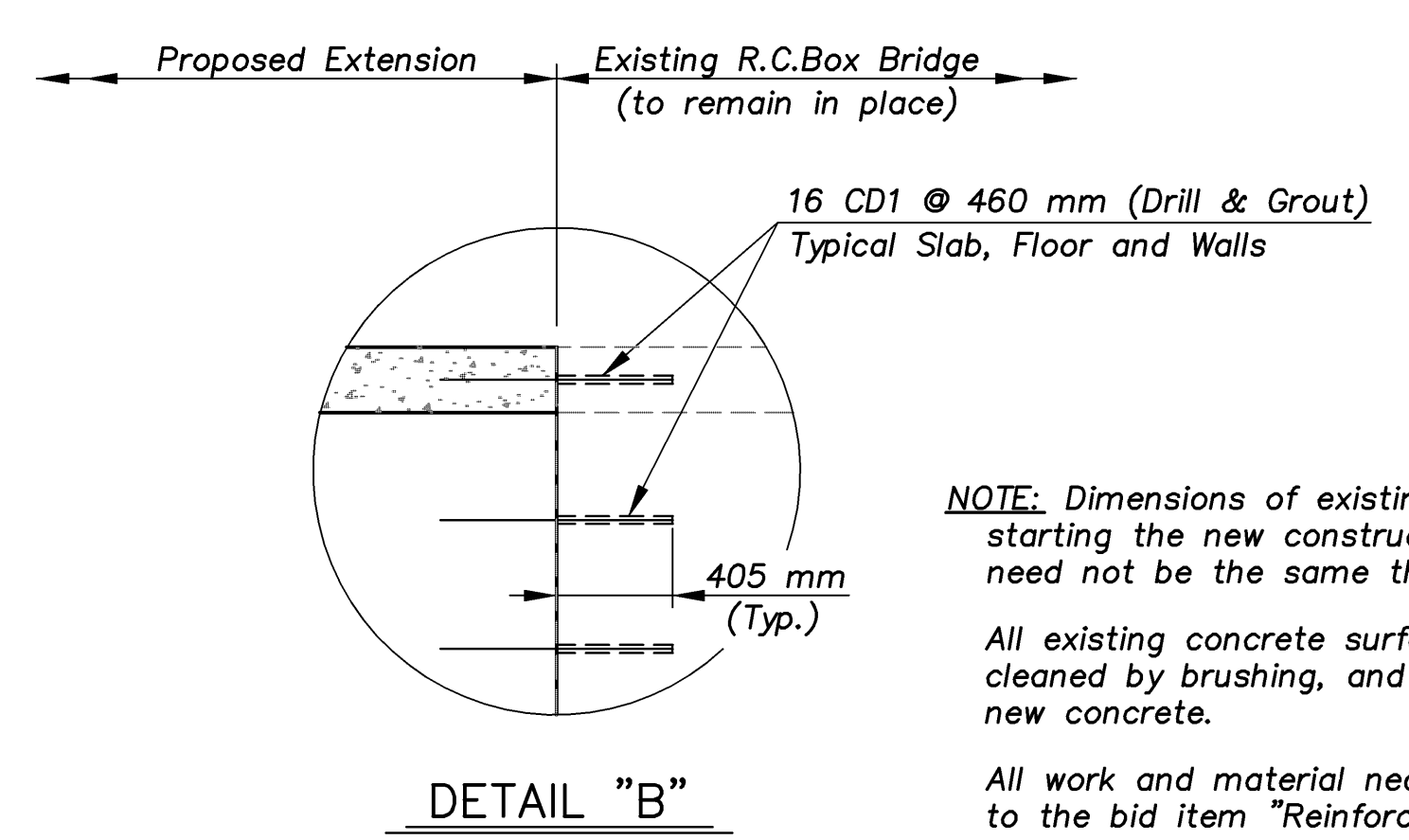
STATE	PROJECT NO.	YEAR	SHEET NO.	TOTAL SHEETS
KANSAS	54-87 K-8258-01	2007	125	556



PLAN OF STORAGE BOX  
 Scale 1:250



TYPICAL SECTION-(TYPE C) STORAGE BOX

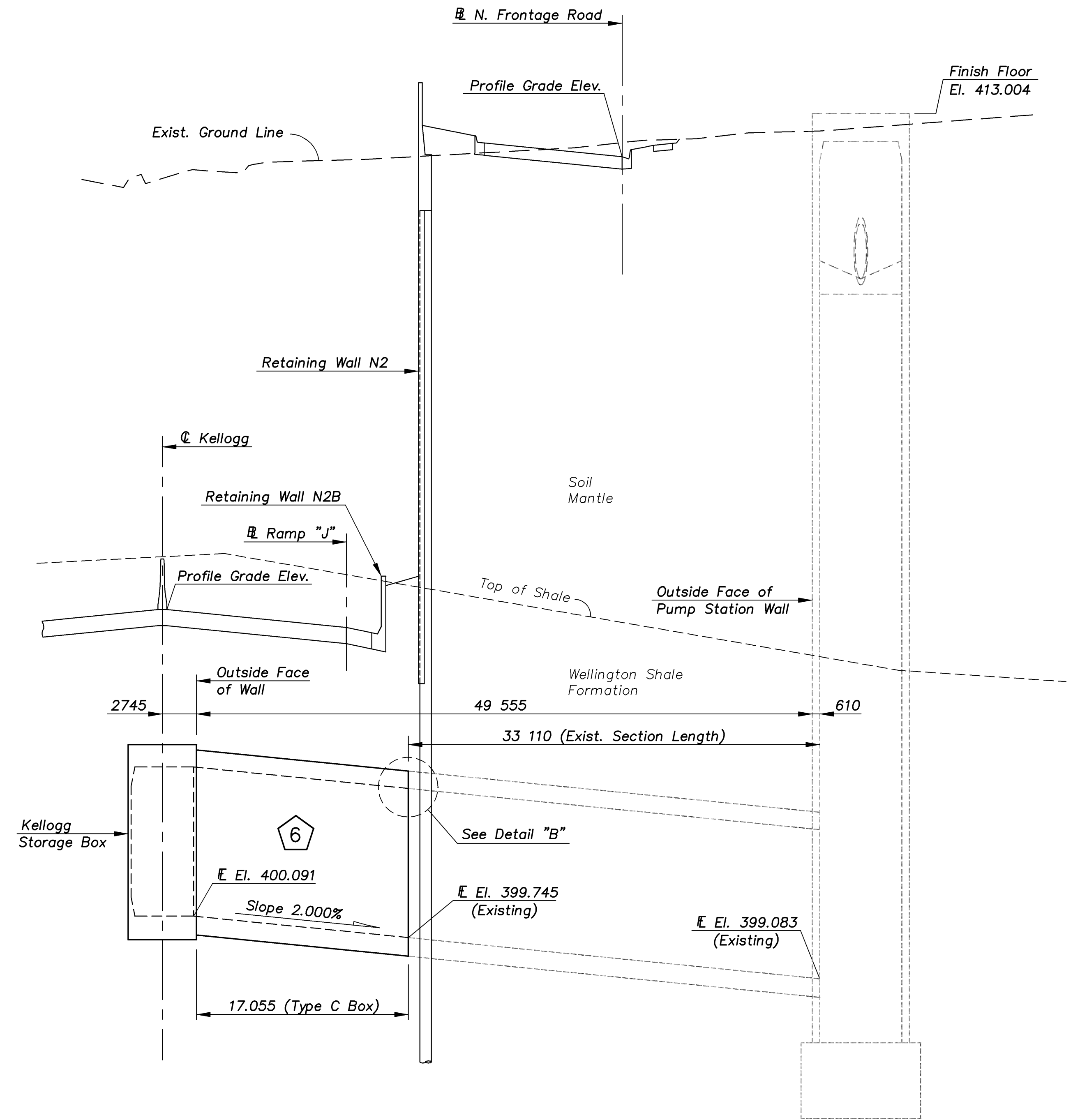


DETAIL "B"

**NOTE:** Dimensions of existing structures shall be checked in the field prior to starting the new construction. Interior walls of multiple span box extensions need not be the same thickness as the existing walls.


All existing concrete surfaces adjacent to new concrete shall be thoroughly cleaned by brushing, and soaked with water immediately prior to placing the new concrete.

All work and material necessary for installing the dowel bars shall be Subsidiary to the bid item "Reinforcing Steel Grade 420 (Epoxy Coated)". Grouting of bars shall meet the requirements of KDOT Standard Specifications.



ELEVATION OF STORAGE BOX  
 Scale: Horz. 1:250  
 Vert. 1:50

Storage-RCB/Kellogg 1:250

KANSAS DEPARTMENT OF TRANSPORTATION		 <b>Cook, Flatt &amp; Strobel</b> ENGINEERS, P. A.	
GENERAL PLAN AND ELEVATION 2.4 x 2.4 m R.C.B. TO ROCK ROAD PUMP STATION			
DESIGNED	R.S.C.	SCALE	Varies
DETAILED	T.R.G.	DATE	
Proj. No. 54-87 K-8258-01		SEDGWICK COUNTY	QUANTITIES T.R.G. SHEET 2 OF 9