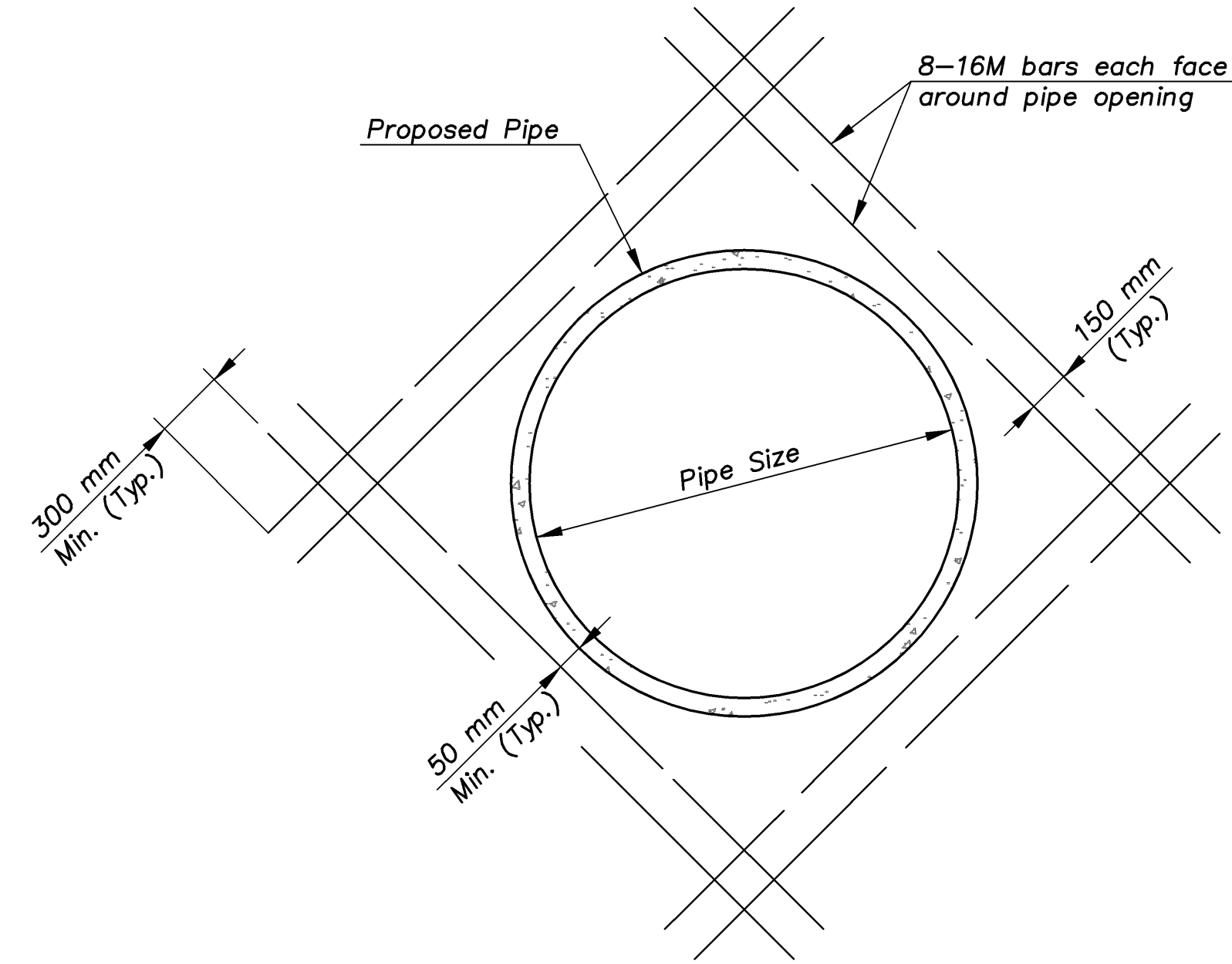


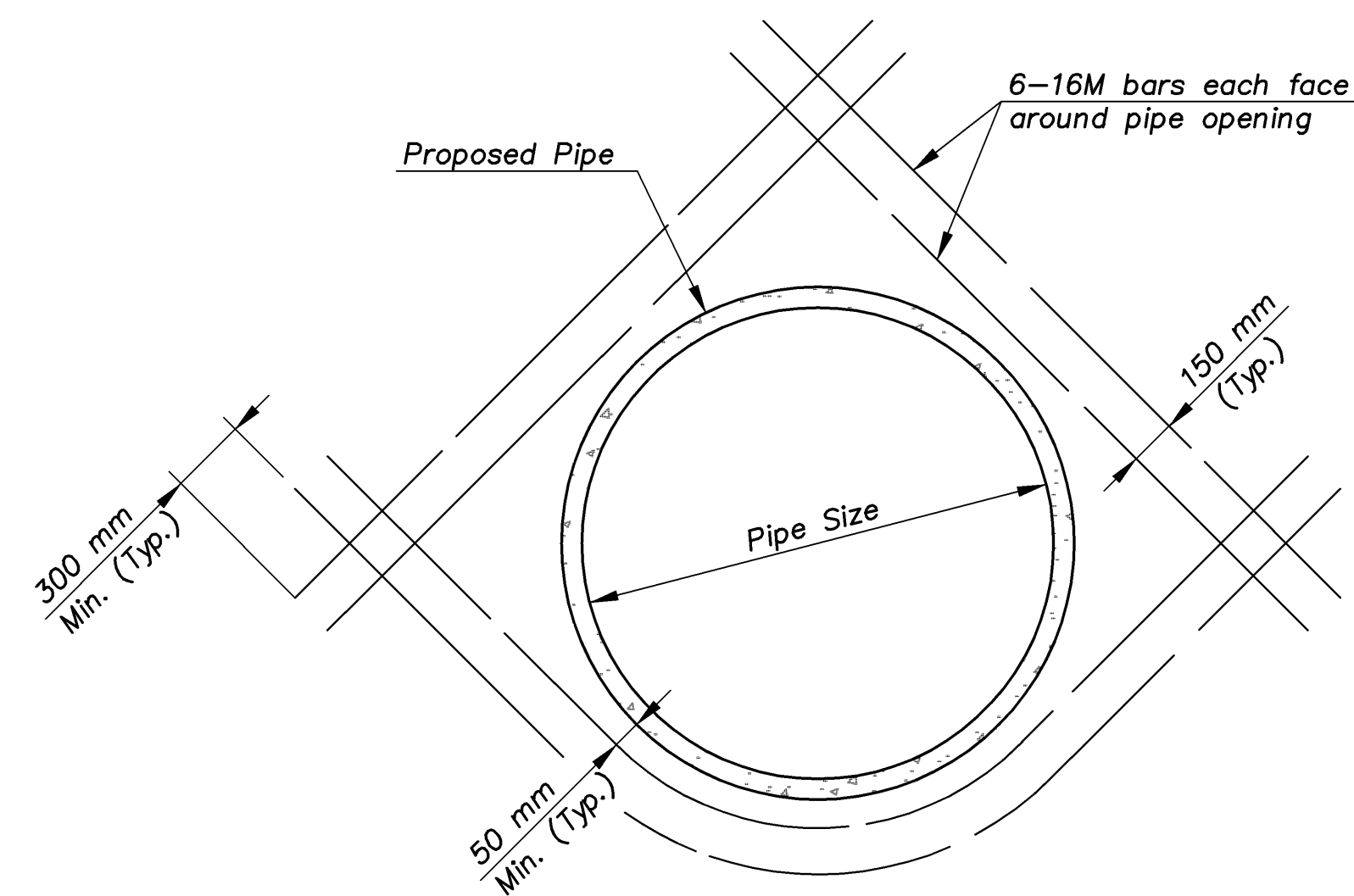
E.F. INDICATES EACH FACE.
 N.F. INDICATES NEAR FACE.
 F.F. INDICATES FAR FACE.

STATE	PROJECT NO.	YEAR	SHEET NO.	TOTAL SHEETS
KANSAS	54-87 K-8258-01	2007	130	556

NOTE: The R.C.B. reinforcing shall be cut or bent to provide 50 mm clearance to the various wall openings. No deductions in the reinforcing steel or concrete quantities has been made for the wall openings.



DETAIL "A"

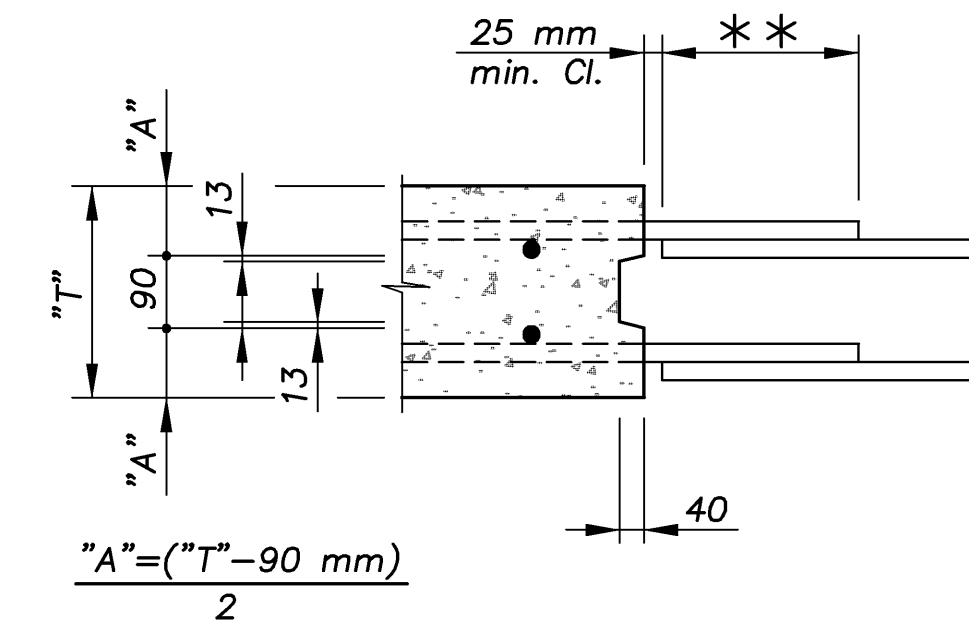


DETAIL "B"

R.C.B. WALL OPENING DETAILS FOR PIPES

NOTE: Diagonal reinforcing shall be added as shown in Detail "A" or "B" depending upon the pipe location in the R.C.B. wall. The reinforcing shall be bent as required to maintain 50 mm clearance to the concrete face. This reinforcing shall not be paid for directly but shall be subsidiary to "Reinforcing Steel Grade 420 (Epoxy Coated)".

** **NOTE:** Longitudinal bars shall extend through the joint to provide a minimum lap equal to the required splice length. See table for required splice length.

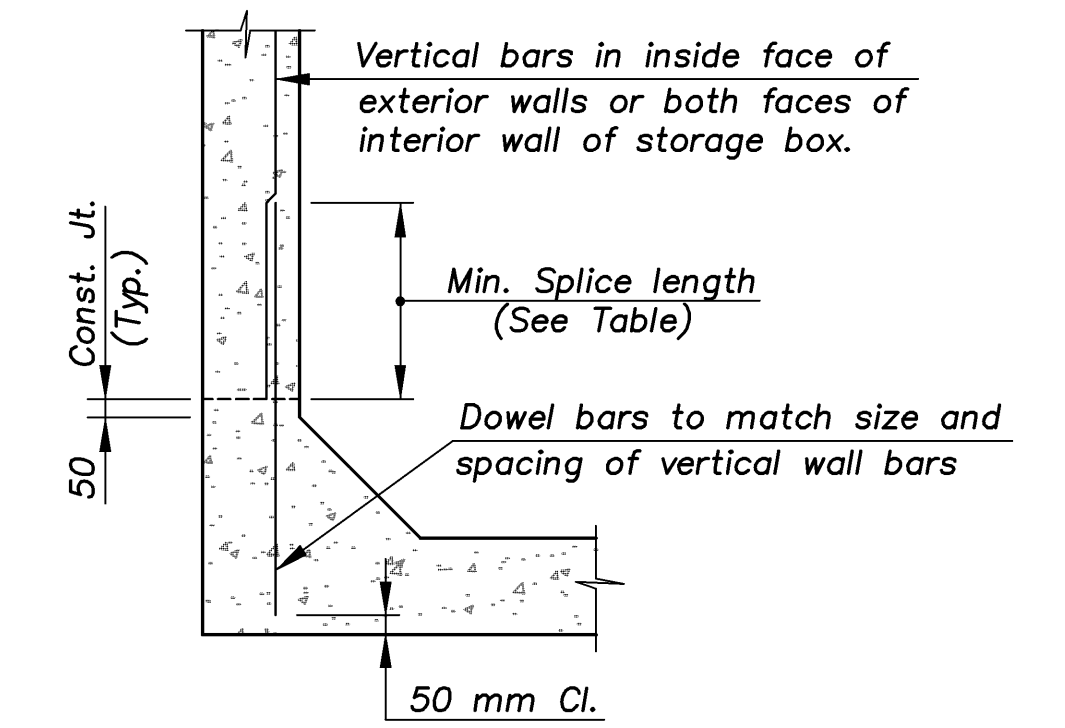


VERTICAL CONSTRUCTION JOINTS

NOTE: Vertical construction joints shall be perpendicular to the longitudinal axis of the R.C.B. and shall be placed at any location as needed for construction and as approved by the Engineer. Vertical construction joints shall be protected by a bentonite based system as shown on the R.C.B. Auxiliary Details Sheet.


NOTE: Horizontal construction joints shall be a roughened finish.

MINIMUM SPLICE LENGTHS	
Bar Size	Splice Length
13 M	640 mm
16 M	790 mm
19 M	940 mm
22 M	1195 mm
25 M	1550 mm



OPTIONAL DOWEL BAR DETAIL

NOTE: The Contractor shall have the option of using dowel bars to match vertical wall bars as shown, however no allowance will be made for additional steel required for bar laps.

KANSAS DEPARTMENT OF TRANSPORTATION		 Cook, Flatt & Strobel ENGINEERS, P. A.	
R.C.B. STORAGE BOX MISCELLANEOUS DETAILS			
DESIGNED	R.S.C.	SCALE	Varies
DETAILED	T.R.G.	DATE	
Proj. No. 54-87 K-8258-01		SEDGWICK COUNTY	QUANTITIES T.R.G. SHEET 7 OF 9