

STATE	PROJECT NO.	YEAR	SHEET NO.	TOTAL SHEETS
KANSAS	54-87 K-8258-01	2007	138	556

**LEGEND**

- INDICATES WATER LINE REMOVAL
- EXIST. WATER LINE
- PROPOSED WATER LINE
- EXIST. WATER VALVE
- PROPOSED WATER VALVE
- EXISTING FIRE HYDRANT
- PROPOSED FIRE HYDRANT
- EXISTING WATER METER
- PROPOSED WATER METER
- PROPOSED REDUCER
- PROPOSED PLUG
- PROPOSED BLOWOFF ASSEMBLY

Scale: 1:500

STA. 3+061.038, LINE 1 =  
 STA. 3+059.043, @ SOUTH FRONTAGE RD., 1.525 m RT.  
 INSTALL  
 1 - CIMJ TEE 400 mm X 300 mm (16" X 12")  
 1 - ANCHOR VALVE ASSEMBLY 300 mm (12") (S)  
 (MJ BUTTERFLY VALVE) VALVE BOX EL. 411.573

STA. 3+079.368, LINE 1 =  
 STA. 3+077.373, @ SOUTH FRONTAGE RD., 1.525 m RT.  
 INSTALL  
 1 - LONG SERVICE 25 mm (1")

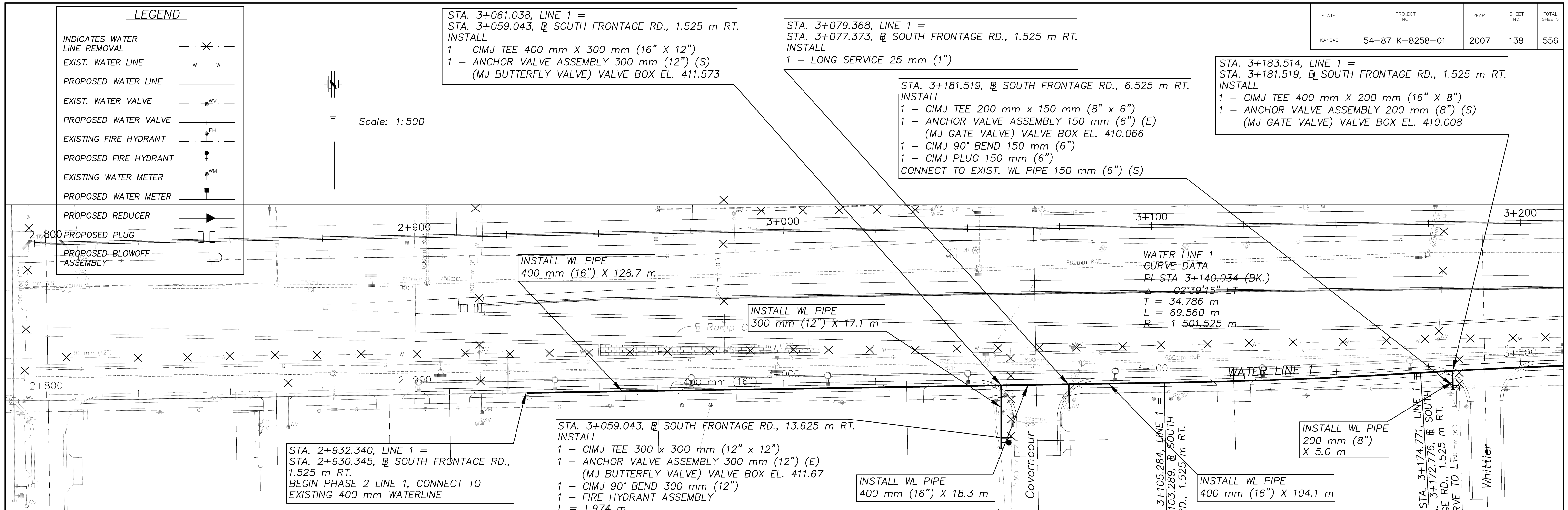
STA. 3+181.519, @ SOUTH FRONTAGE RD., 6.525 m RT.  
 INSTALL  
 1 - CIMJ TEE 200 mm x 150 mm (8" x 6")  
 1 - ANCHOR VALVE ASSEMBLY 150 mm (6") (E)  
 (MJ GATE VALVE) VALVE BOX EL. 410.066  
 1 - CIMJ 90° BEND 150 mm (6")  
 1 - CIMJ PLUG 150 mm (6")  
 CONNECT TO EXIST. WL PIPE 150 mm (6") (S)

STA. 3+183.514, LINE 1 =  
 STA. 3+181.519, @ SOUTH FRONTAGE RD., 1.525 m RT.  
 INSTALL  
 1 - CIMJ TEE 400 mm X 200 mm (16" X 8")  
 1 - ANCHOR VALVE ASSEMBLY 200 mm (8") (S)  
 (MJ GATE VALVE) VALVE BOX EL. 410.008

WATER LINE 1  
 CURVE DATA  
 PI STA 3+140.034 (BK.)  
 $\Delta = 02^{\circ}39'15"$  LT  
 $T = 34.786$  m  
 $L = 69.560$  m  
 $R = 1\ 501.525$  m

DATE	BY

REFERENCE NOTED	REFERENCE CHECKED



STA. 2+932.340, LINE 1 =  
 STA. 2+930.345, @ SOUTH FRONTAGE RD., 1.525 m RT.  
 BEGIN PHASE 2 LINE 1, CONNECT TO EXISTING 400 mm WATERLINE

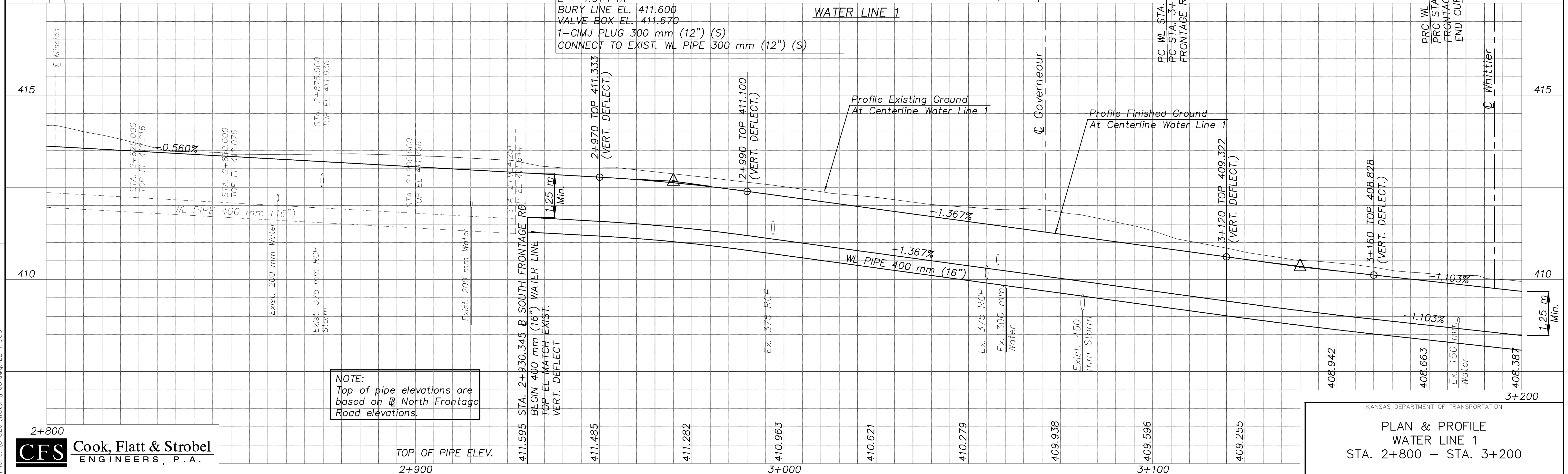
STA. 3+059.043, @ SOUTH FRONTAGE RD., 13.625 m RT.  
 INSTALL  
 1 - CIMJ TEE 300 x 300 mm (12" x 12")  
 1 - ANCHOR VALVE ASSEMBLY 300 mm (12") (E)  
 (MJ BUTTERFLY VALVE) VALVE BOX EL. 411.67  
 1 - CIMJ 90° BEND 300 mm (12")  
 1 - FIRE HYDRANT ASSEMBLY  
 $L = 1.974$  m  
 BURY LINE EL. 411.600  
 VALVE BOX EL. 411.670  
 1 - CIMJ PLUG 300 mm (12") (S)  
 CONNECT TO EXIST. WL PIPE 300 mm (12") (S)

INSTALL WL PIPE  
 400 mm (16") X 18.3 m

INSTALL WL PIPE  
 400 mm (16") X 104.1 m

INSTALL WL PIPE  
 200 mm (8") X 5.0 m

PRC WL STA. 3+174.771, LINE 1 =  
 PRC STA. 3+172.776, @ SOUTH FRONTAGE RD., 1.525 m RT.  
 END CURVE TO LT. mm (6")



NOTE:  
 Top of pipe elevations are based on North Frontage Road elevations.

KANSAS DEPARTMENT OF TRANSPORTATION  
**PLAN & PROFILE**  
**WATER LINE 1**  
 STA. 2+800 - STA. 3+200

2+800  
**CFS** Cook, Flatt & Strobel  
 ENGINEERS, P.A.

TOP OF PIPE ELEV.  
 2+900

Drawn by: [Name]  
 Plotted: [Date]  
 File: J:\01026\Water\PO5.dwg\ALE 1:500