

STATE	PROJECT NO.	YEAR	SHEET NO.	TOTAL SHEETS
KANSAS	54-87 K-8258-01	2007	139	556

Scale: 1:500

STA. 3+284.689, LINE 1 =
 STA. 3+285.000, @ SOUTH FRONTAGE RD., 8.5 m RT.
 INSTALL
 1 - CIMJ TEE 200 mm X 200 mm (8" X 8")
 1 - ANCHOR VALVE ASSEMBLY 200 mm (8") (W)
 (MJ GATE VALVE) VALVE BOX EL. 408.740
 1 - CIMJ 90° BEND 200 mm (8")
 1 - FIRE HYDRANT ASSEMBLY
 L = 0.921 m
 BURY LINE EL. 408.775
 VALVE BOX EL. 408.735
 1 - CIMJ PLUG 200 mm (8") (S)
 CONNECT TO EXIST. WL PIPE 200 mm (8") (S)

STA. 3+353.658, LINE 1 =
 STA. 3+351.669, @ SOUTH FRONTAGE RD., 1.525 m RT.
 INSTALL
 1 - FIRE HYDRANT ASSEMBLY
 L = 0.921
 BURY LINE EL. 408.562
 VALVE BOX EL. 408.541

STA. 3+385.658, LINE 1 =
 STA. 3+383.669, @ SOUTH FRONTAGE RD., 1.525 m RT.
 INSTALL
 1 - CIMJ TEE 400 mm X 400 mm (16" X 16")
 1 - ANCHOR VALVE ASSEMBLY 400 mm (16") (W)
 (MJ BUTTERFLY VALVE) VALVE BOX EL. 408.748
 1 - ANCHOR VALVE ASSEMBLY 400 mm (16") (E)
 (MJ BUTTERFLY) VALVE BOX EL. 408.714
 1 - ANCHOR VALVE ASSEMBLY 400 mm (16") (N)
 (MJ BUTTERFLY) VALVE BOX EL. 408.713

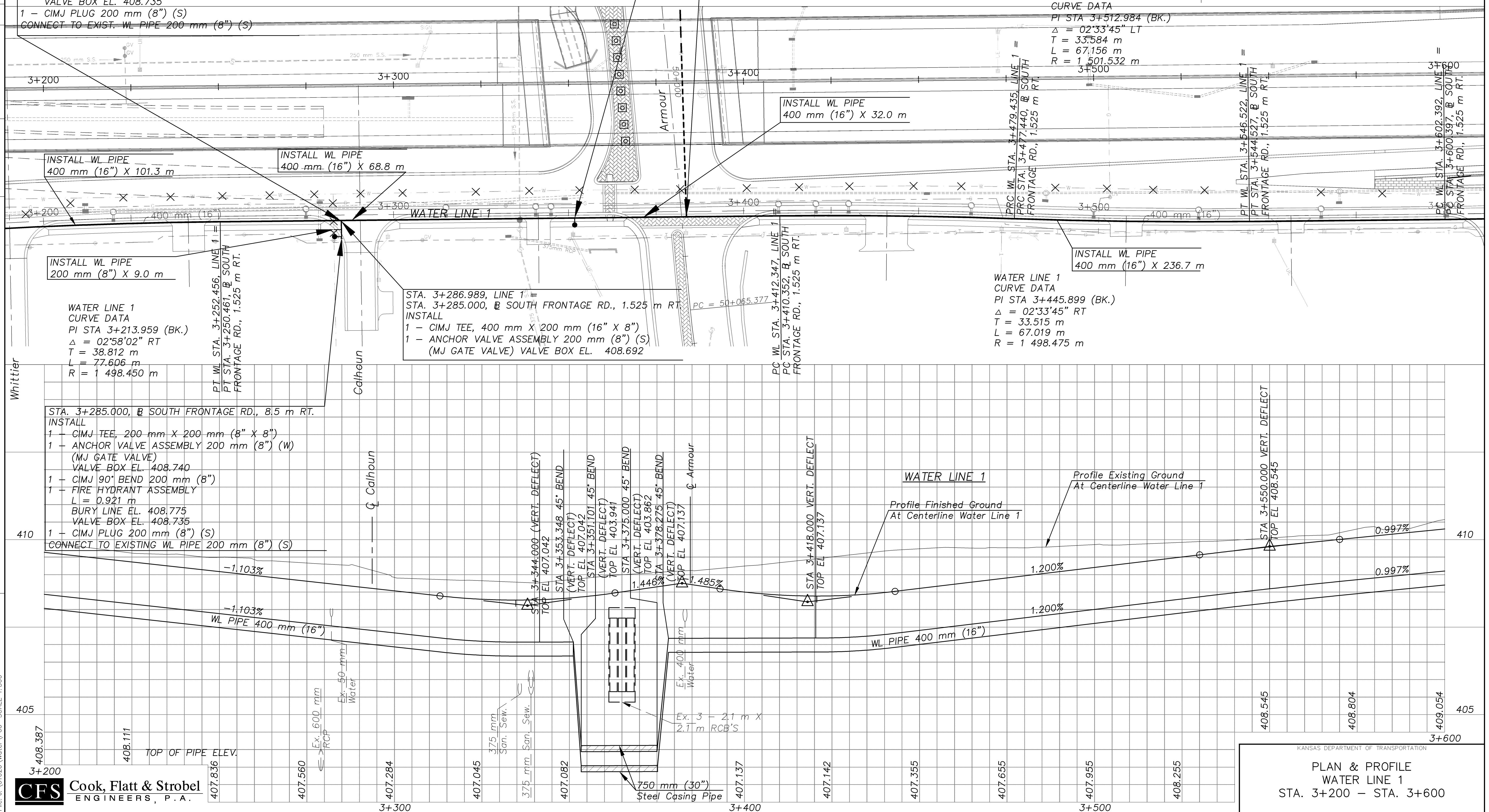
WATER LINE 1
 CURVE DATA
 PI STA 3+512.984 (BK.)
 $\Delta = 02^{\circ}33'45''$ LT
 T = 33.584 m
 L = 67.156 m
 R = 1,501.532 m

WATER LINE 1
 CURVE DATA
 PI STA 3+445.899 (BK.)
 $\Delta = 02^{\circ}33'45''$ RT
 T = 33.515 m
 L = 67.019 m
 R = 1,498.475 m

DATE	BY

REFERENCE NOTED	REFERENCE CHECKED

3m VC



STA. 3+285.000, @ SOUTH FRONTAGE RD., 8.5 m RT.
 INSTALL
 1 - CIMJ TEE, 200 mm X 200 mm (8" X 8")
 1 - ANCHOR VALVE ASSEMBLY 200 mm (8") (W)
 (MJ GATE VALVE) VALVE BOX EL. 408.740
 1 - CIMJ 90° BEND 200 mm (8")
 1 - FIRE HYDRANT ASSEMBLY
 L = 0.921 m
 BURY LINE EL. 408.775
 VALVE BOX EL. 408.735
 1 - CIMJ PLUG 200 mm (8") (S)
 CONNECT TO EXISTING WL PIPE 200 mm (8") (S)

STA. 3+286.989, LINE 1 =
 STA. 3+285.000, @ SOUTH FRONTAGE RD., 1.525 m RT.
 INSTALL
 1 - CIMJ TEE, 400 mm X 200 mm (16" X 8")
 1 - ANCHOR VALVE ASSEMBLY 200 mm (8") (S)
 (MJ GATE VALVE) VALVE BOX EL. 408.692

PC WL STA. 3+412.347, LINE 1
 PC STA. 3+410.352, @ SOUTH FRONTAGE RD., 1.525 m RT.

STA 3+550.000 VERT. DEFLECT
 TOP EL 408.545

408.545

408.804

409.054

CFS Cook, Flatt & Strobel
 ENGINEERS, P.A.

KANSAS DEPARTMENT OF TRANSPORTATION
 PLAN & PROFILE
 WATER LINE 1
 STA. 3+200 - STA. 3+600