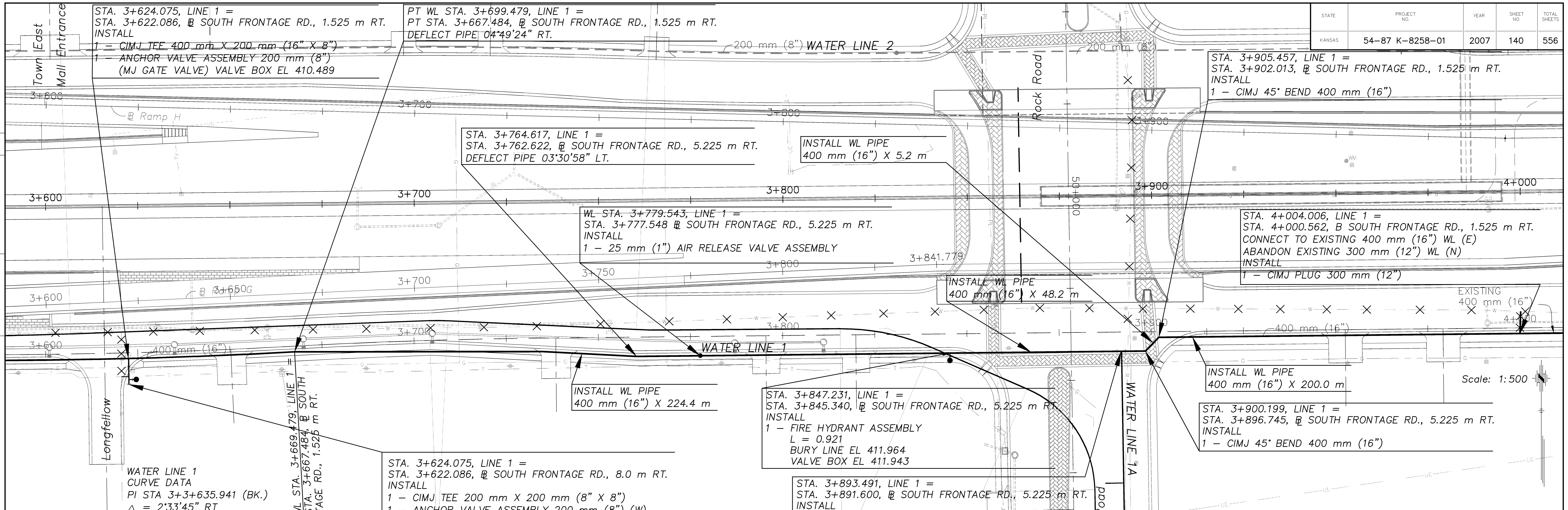


DATE	
BY	
REFERENCE NOTED	
REFERENCE CHECKED	



WATER LINE 1
 CURVE DATA
 PI STA 3+3+635.941 (BK.)
 $\Delta = 2^{\circ}33'45''$ RT
 $T = 33.584$ m
 $L = 67.156$ m
 $R = 1\ 501.525$ m

PRC WL STA. 3+669.479, LINE 1 =
 PRC STA. 3+667.484, @ SOUTH FRONTAGE RD., 1.525 m RT.

STA. 3+624.075, LINE 1 =
 STA. 3+622.086, @ SOUTH FRONTAGE RD., 8.0 m RT.
 INSTALL
 1 - CIMJ TEE 200 mm X 200 mm (8" X 8")
 1 - ANCHOR VALVE ASSEMBLY 200 mm (8") (W)
 (MJ GATE VALVE) VALVE BOX EL 410.562
 1 - CIMJ 90° BEND 200 mm (8")
 1 - FIRE HYDRANT ASSEMBLY
 $L = 0.921$ m
 BURY LINE ELEV. 410.602
 VALVE BOX ELEV. 410.562
 1 - CIMJ PLUG 200 mm (8")
 CONNECT TO EXISTING WL PIPE 200 mm (8") (S)

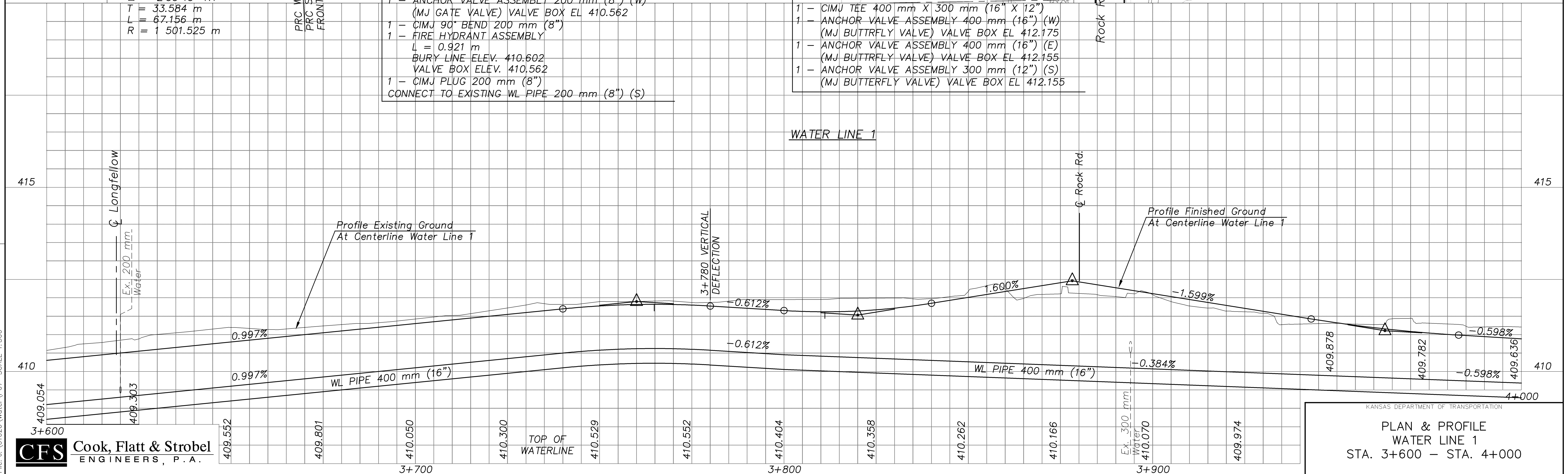
STA. 3+847.231, LINE 1 =
 STA. 3+845.340, @ SOUTH FRONTAGE RD., 5.225 m RT.
 INSTALL
 1 - FIRE HYDRANT ASSEMBLY
 $L = 0.921$
 BURY LINE EL 411.964
 VALVE BOX EL 411.943

STA. 3+893.491, LINE 1 =
 STA. 3+891.600, @ SOUTH FRONTAGE RD., 5.225 m RT.
 INSTALL
 1 - CIMJ TEE 400 mm X 300 mm (16" X 12")
 1 - ANCHOR VALVE ASSEMBLY 400 mm (16") (W)
 (MJ BUTTERFLY VALVE) VALVE BOX EL 412.175
 1 - ANCHOR VALVE ASSEMBLY 400 mm (16") (E)
 (MJ BUTTERFLY VALVE) VALVE BOX EL 412.155
 1 - ANCHOR VALVE ASSEMBLY 300 mm (12") (S)
 (MJ BUTTERFLY VALVE) VALVE BOX EL 412.155

STA. 3+900.199, LINE 1 =
 STA. 3+896.745, @ SOUTH FRONTAGE RD., 5.225 m RT.
 INSTALL
 1 - CIMJ 45° BEND 400 mm (16")

STA. 4+004.006, LINE 1 =
 STA. 4+000.562, @ SOUTH FRONTAGE RD., 1.525 m RT.
 CONNECT TO EXISTING 400 mm (16") WL (E)
 ABANDON EXISTING 300 mm (12") WL (N)
 INSTALL
 1 - CIMJ PLUG 300 mm (12")

Scale: 1:500



KANSAS DEPARTMENT OF TRANSPORTATION
PLAN & PROFILE
WATER LINE 1
 STA. 3+600 - STA. 4+000

Drawn by: [Blank]
 Plotted: [Blank]
 File: J:\01026\Water\07 SCALE 1:500

