

STATE	PROJECT NO.	YEAR	SHEET NO.	TOTAL SHEETS
KANSAS	54-87 K-8258-01	2007	142	556

Scale: 1:500

STA. 3+482.854, LINE 2 =
 STA. 3+482.942, @ NORTH FRONTAGE RD., 2,300 m LT.
 EXISTING WL 2 ENDS W/THE FOLLOWING EQUIP. IN PLACE:
 1 - ANCHOR VALVE ASSEMBLY SPECIAL
 300 mm (12") E
 (MJ BUTTERFLY VALVE) VALVE BOX EL. 409.458
 1 - CIMJ PLUG 300 mm (12")
 1 - BLOWOFF ASSEMBLY 50 mm (2")

STA. 3+482.854, LINE 2 =
 STA. 3+482.942, @ NORTH FRONTAGE RD., 2,300 m LT.
 BEGIN WATER LINE 2
 REMOVE
 1 - BLOWOFF ASSEMBLY 50 mm (2")
 INSTALL
 1 - CIMJ TEE 300 mm X 200 mm (12" X 8")
 CONNECT TO EXISTING 200 mm (8") (N)
 ON WEST SIDE OF NEW RESTAURANT

INSTALL WL PIPE
 300 mm x 162.3 m

REMOVE & REPLACE EXISTING 16" (400 mm)
 WATERLINE PIPE FROM 4.367 m LT.
 STA. 49+991.008 @ ARMOUR RD., SOUTH TO
 WATERLINE 1.

INSTALL WL PIPE
 400 mm (16") X 251.3 m

INSTALL WL PIPE
 400 mm (16") X 48.0 m

WATER LINE 2
 CURVE DATA
 PI STA 3+448.027 (BK.)
 $\Delta = 02^{\circ}33'45"$ LT.
 T = 33.515 m
 L = 67.019 m
 R = 1 501.475 m

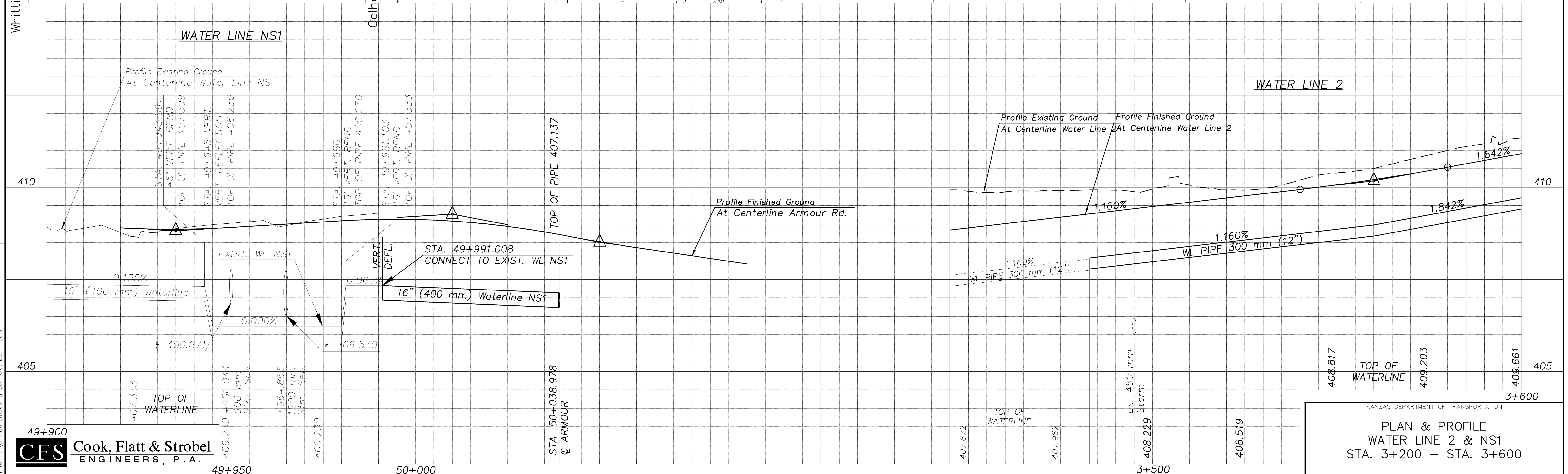
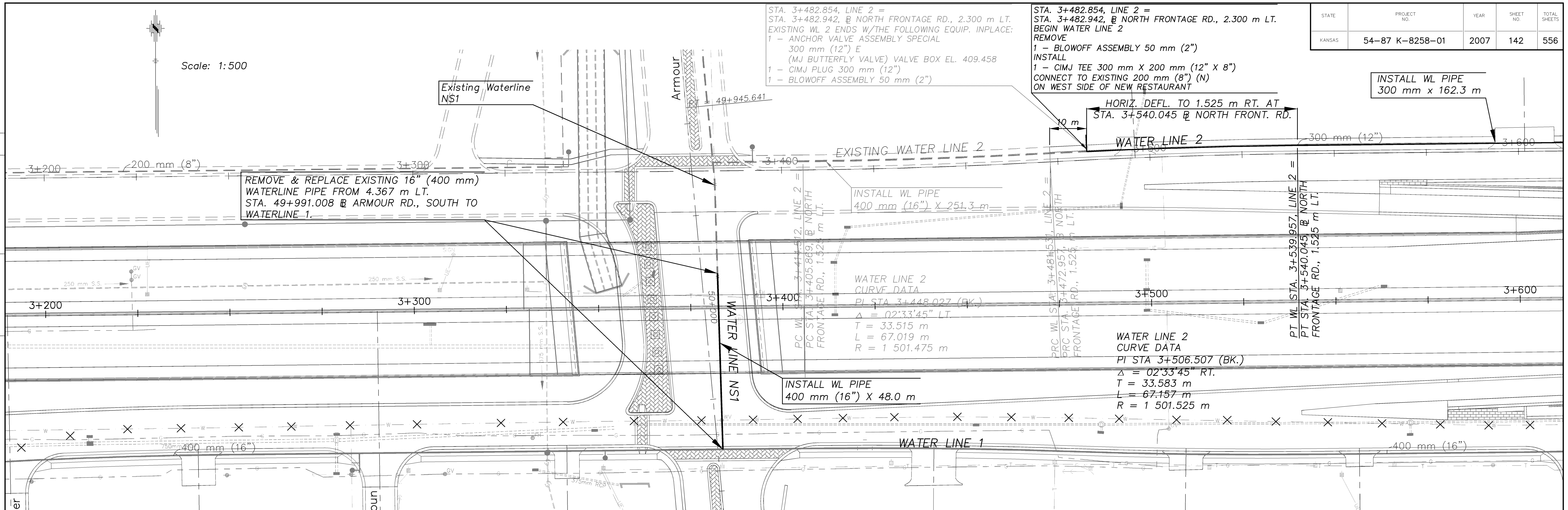
WATER LINE 2
 CURVE DATA
 PI STA 3+506.507 (BK.)
 $\Delta = 02^{\circ}33'45"$ RT.
 T = 33.583 m
 L = 67.157 m
 R = 1 501.525 m

PT WL STA. 3+539.957, LINE 2 =
 PT STA. 3+540.045 @ NORTH
 FRONTAGE RD., 1,525 m LT.

HORIZ. DEFL. TO 1.525 m RT. AT
 STA. 3+540.045 @ NORTH FRONT. RD.

DATE	BY

REFERENCE NOTED	REFERENCE CHECKED



Drawn by: J. J. Cook
 Plotted: P25
 File: J:\01026\Water\P25 SCALE 1:500

CFS Cook, Flatt & Strobel
 ENGINEERS, P.A.

KANSAS DEPARTMENT OF TRANSPORTATION
 PLAN & PROFILE
 WATER LINE 2 & NS1
 STA. 3+200 - STA. 3+600