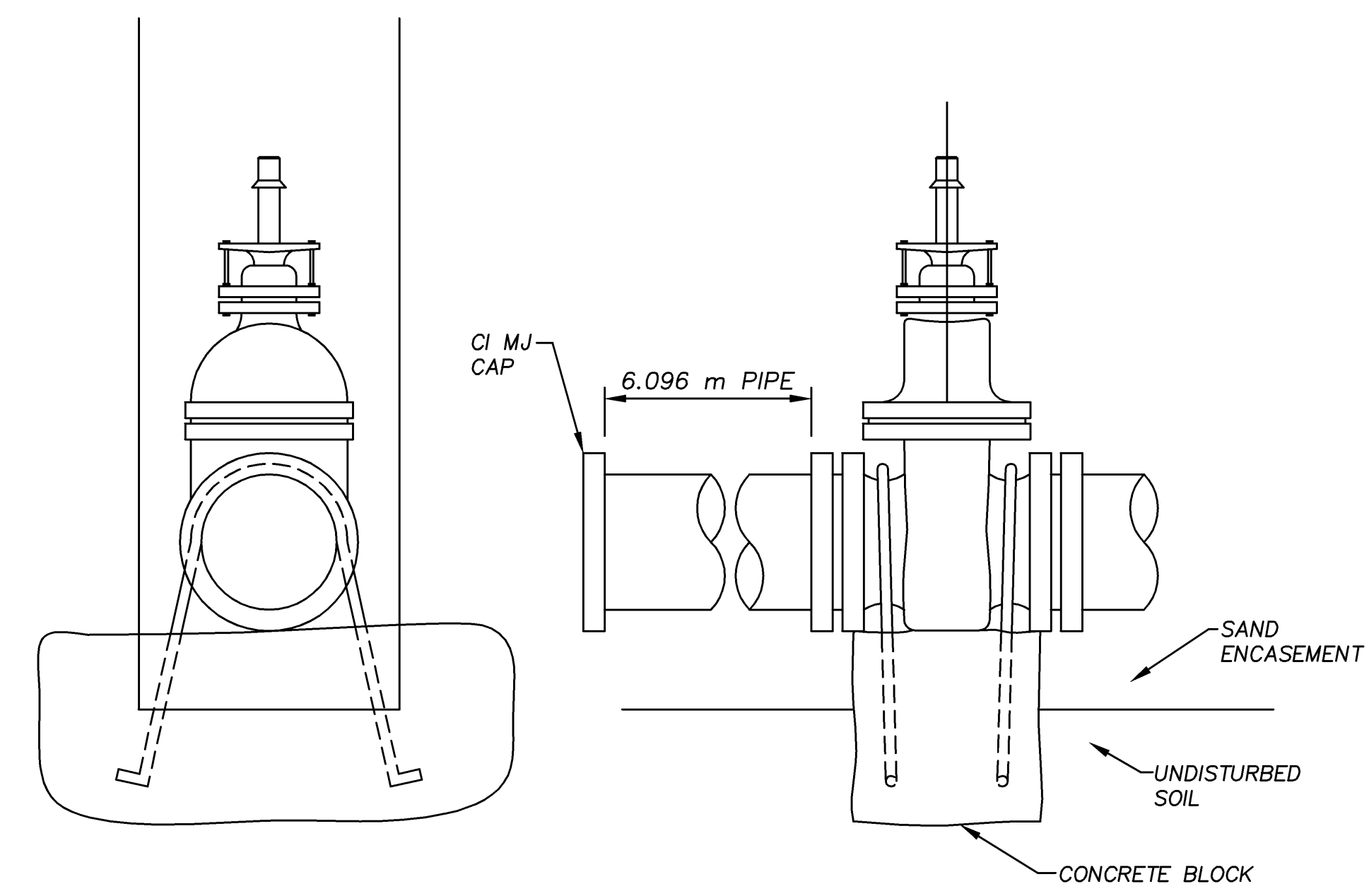
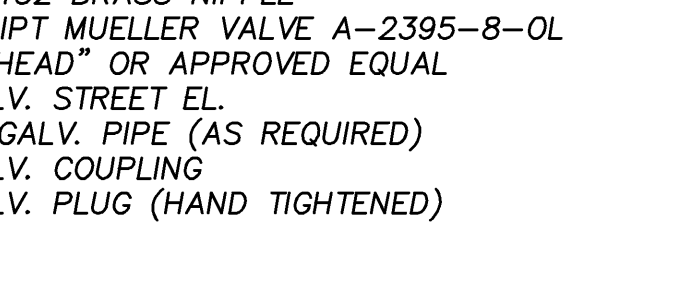
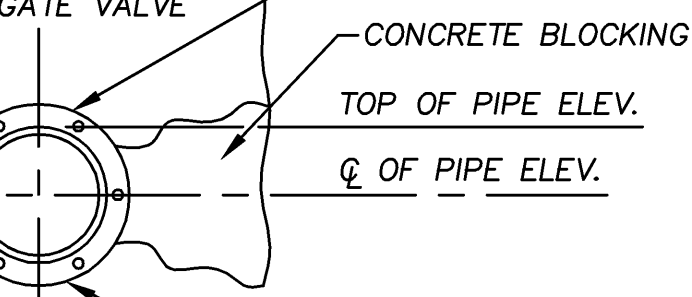
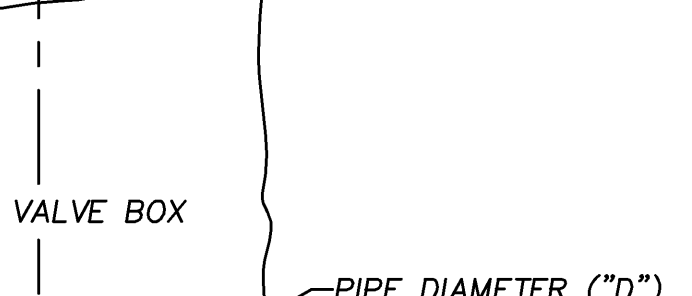
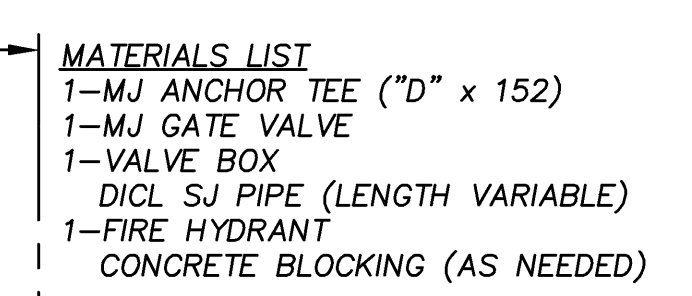


FIRE HYDRANTS REQUIRED

STATION	BURY LINE ELEVATION	TOP OF PIPE ELEVATION	FIRE HYDRANT BURY REQUIRED

IF HYDRANT BURY IS IN EXCESS OF 1524 m, CONTRACTOR SHALL USE STANDARD 1.529 m HYDRANT BURY AND HYDRANT BARREL EXTENSIONS AS NECESSARY.
 SEE SHEET NO. 176 FOR FIRE HYDRANT SCHEDULE

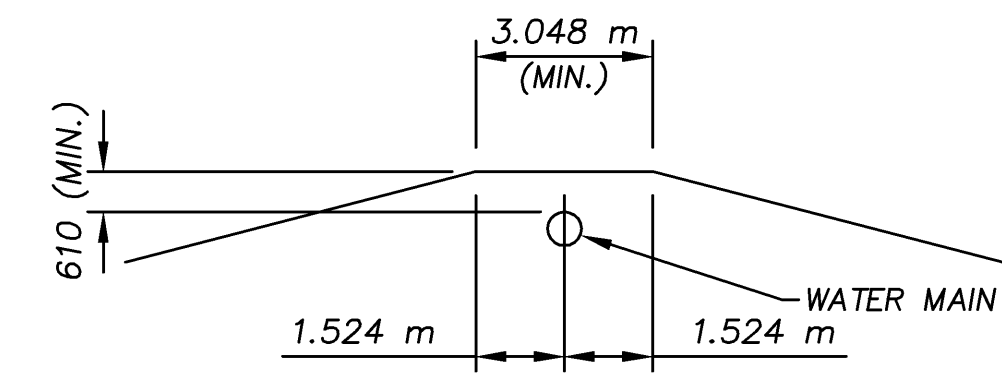


- Notes:**
- Concrete Block at Valve to have sufficient bearing in undisturbed soil to prevent thrust movement as shown in table at right. Field Engineer to determine thrust loading of undisturbed soil and final size of thrust block.
 - Provide clearance around flanges to M.J. accessories.
 - Valve block to be included in bid item of Concrete for thrust blocks.
 - All Valves at dead ends and at other locations as called out on the plans shall be blocked as shown here.

THRUST AT VALVES

VALVE	THRUST AT 150#/in. ²
102	1809 lbs.
152	4245 lbs.
203	7540 lbs.
305	16965 lbs.

ANCHORED VALVE ASSEMBLY, SPECIAL



PROTECTIVE FILL DETAIL

MINIMUM PROTECTIVE FILL SHALL BE PROVIDED IN ALL INSTANCES WHERE COVER OVER THE PROP. WATER LINE IS LESS THAN 610. (COST SUBSIDIARY TO PIPE INSTALLATION)

2" BLOWOFF ASSEMBLY