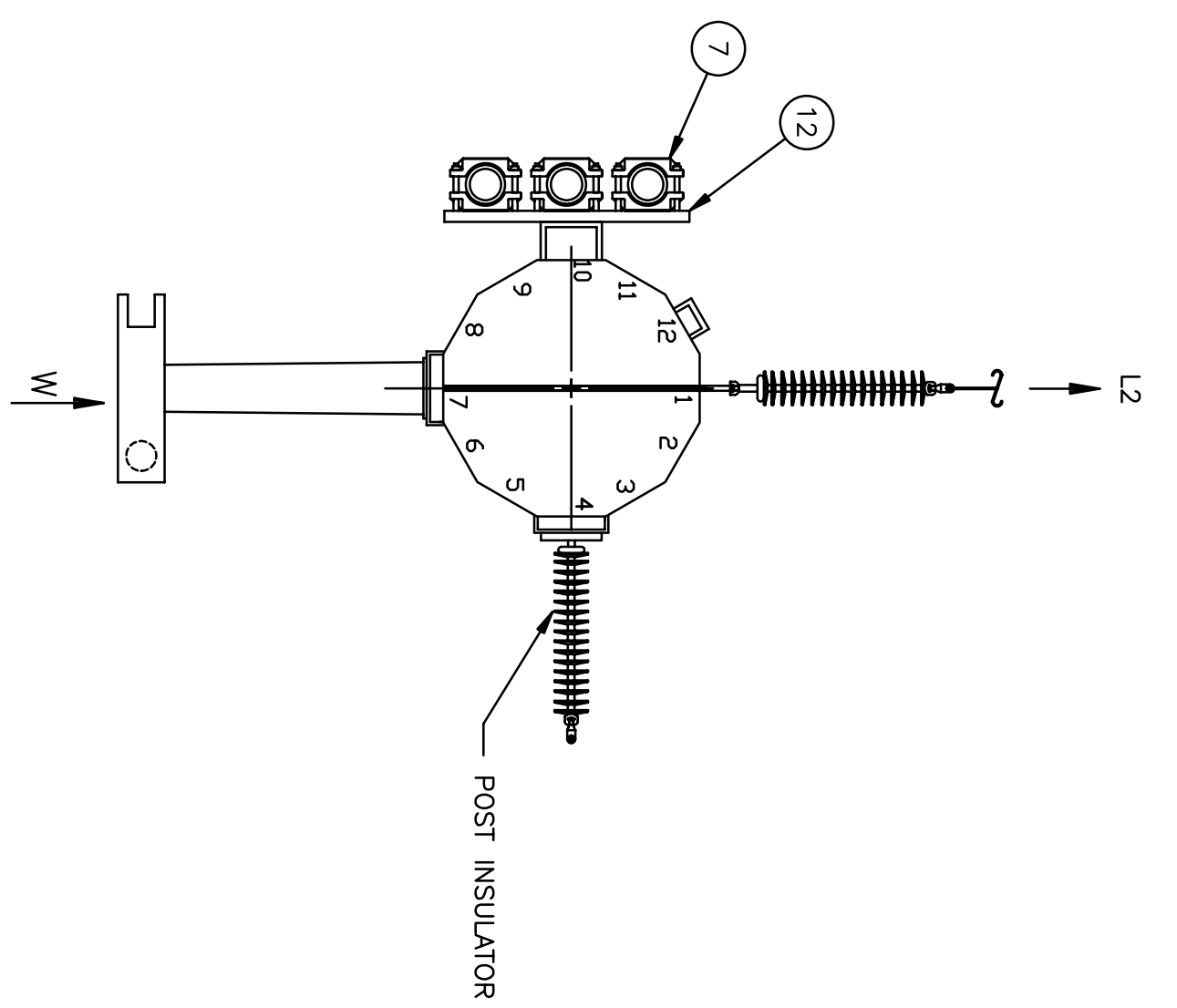
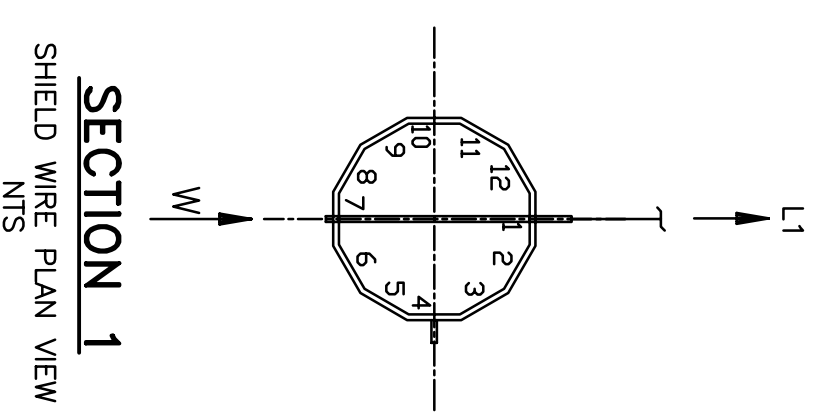
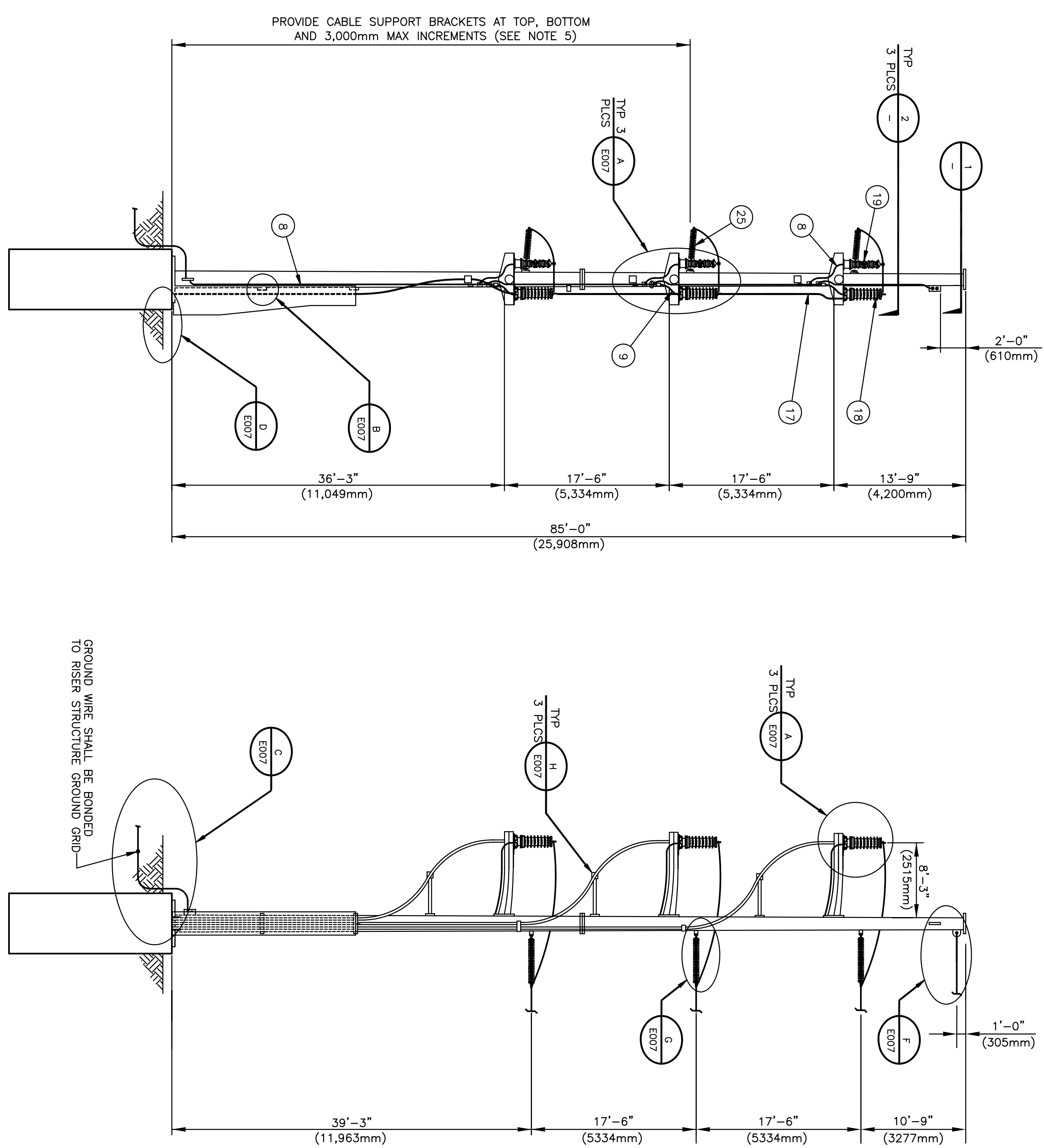


- NOTES:**
- ELECTRICAL CONTRACTOR SHALL INSTALL ONE BARE 4/0 AWG COPPER STRANDED GROUND CONDUCTOR FROM EACH CABLE TERMINATOR TO ITS ASSOCIATED LINKBOX AND A BARE 4/0 AWG COPPER STRANDED GROUND CONDUCTOR FROM THE LINKBOX TO THE CONTINUOUS GROUND WIRE RUNNING THROUGH THE POLE.
  - ELECTRICAL CONTRACTOR SHALL INSTALL ONE INSULATED 4/0 AWG COPPER STRANDED GROUND CONDUCTOR FROM EACH SURGE ARRESTER TO THE CONTINUOUS GROUND WIRE RUNNING THROUGH THE POLE.
  - ELECTRICAL CONTRACTOR SHALL INSTALL FOUR (4) "UNISTRUT" ON THE TWO (2) STEEL BRACKETS PROVIDED FOR LINK BOX INSTALLATION ON THE POLE. THE LINKBOX WILL BE INSTALLED ON THE "UNISTRUT".
  - ELECTRICAL CONTRACTOR SHALL PROVIDE AND INSTALL ALL MATERIALS REQUIRED FOR A COMPLETE INSTALLATION OF CABLE SUPPORT AND GROUNDING ON THE STEEL POLE. THE CONTRACTOR SHALL CUT, BEND AND FIT THE CABLE TO FINAL CONDITIONS.



ITEM NO.	ITEM DESCRIPTION	MANUFACTURER AND CATALOG NO.	QUANTITY REQUIRED	FURNISHED BY
1	OVERHEAD CONDUCTOR, 3W-954KCM-ACSR 45/7 "TAIL"		0	0
2	JUMPER TERMINAL FOR 954 KCMIL "TAIL"		-	EC
3	JUMPER TERMINAL FOR 954 KCMIL "TAIL"		-	EC
4	DEADEND INSULATOR FOR OVERHEAD CONDUCTOR	OHIO BRASS 405004-1301	3	0
5	OVERHEAD SHIELD WIRE 1W-3/8"-HS-GSS		-	0
6	153mm PVC SCH 40 CONDUIT ELBOW, 2134 RADIUS		-	CC
7	CABLE CLAMP FOR 69KV CABLE	EHV-1279A	18	EC
8	4/0 AWG BARE COPPER GROUND CONDUCTOR		-	EC
9	4/0 AWG INSULATED COPPER GROUND CONDUCTOR		-	EC
10	TWO HOLE GROUND PAD FOR GROUND CONDUCTOR		2	0
11	CABLE TERMINATOR AERIAL LUG		-	0
12	PREFORMED CHANNEL FOR CABLE CLAMP	UNISTRUT	4	EC
13	51mm (2") ADAPTER COUPLING	CARLON E997J	1	EC
14	153 mm (6") ADAPTER COUPLING	CARLON E997R	6	EC
15	EXOTHERMIC WELD, 4/0 AWG TO GROUND ROD	CADWELD	1	EC
16	6096 mm (20") COPPER CLAD, 16 mm GROUND ROD	ERITECH 615803	2	EC
17	69KV POWER TRANSMISSION CABLE		-	0
18	69KV POWER TRANSMISSION CABLE TERMINATOR		3	0
19	SURGE ARRESTER		3	0
20	SINGLE PHASE LINKBOX WITH SVL		3	0
21	NOT USED		-	-
22	GROUND CLAMP, FOR CONNECTING 4/0 AWG TO ARM	ANDERSON GC-143	3	EC
23	GROUND CLAMP, FOR CONNECTING TWO (2) 4/0 AWG	ANDERSON GC-143	6	EC
24	GROUND CLAMP, FOR CONNECTING GROUND WIRE TO GROUND CLIP	ANDERSON GC-141	2	EC
25	POST INSULATOR		3	0
26	Y-CLEVIS BALL, 30 KIP	ANDERSON YBC-30	-	0
27	DEADEND STRAIN CLAMP FOR OVERHEAD SHIELD WIRE, W/SOCKET, 20 KIP	ANDERSON SD-70-S	-	0
28	DEADEND STRAIN CLAMP FOR OVERHEAD CONDUCTOR, W/SOCKET, 30 KIP	ANDERSON SD-112-S	-	0
29	ANCHOR SHACKLE	ANDERSON AS-35	-	0

FURNISHED BY CODE:  
 O - OWNER  
 EC - ELECTRICAL CONTRACTOR  
 CC - CIVIL CONTRACTOR

**69KV OVERHEAD TO UNDERGROUND  
 TRANSITION STRUCTURE**  
 NTS

**KDOT PROJ. NO. 54-87 K-8258-01**  
**Sheet No. 152 of 556**

**APPROVED FOR  
 CONSTRUCTION**

PROJECT	WESTAR ENERGY COMPANY US HIGHWAY 54/KELLOGG AVENUE PROJECT	DRAWING NUMBER	136462-WSTR-E006	REV	1
ENGINEER	BLACK & VEATCH	PROJECT CODE	AREA		
CHECKED	NTM	DATE	03/01/06		
DESIGNED	MR. J. FURBER	ISSUED FOR CONSTRUCTION	03/01/06		
DRAWN	MR. J. FURBER	95% REVIEW ISSUE	01/31/05		
DATE		REVISIONS AND RECORD OF ISSUE			