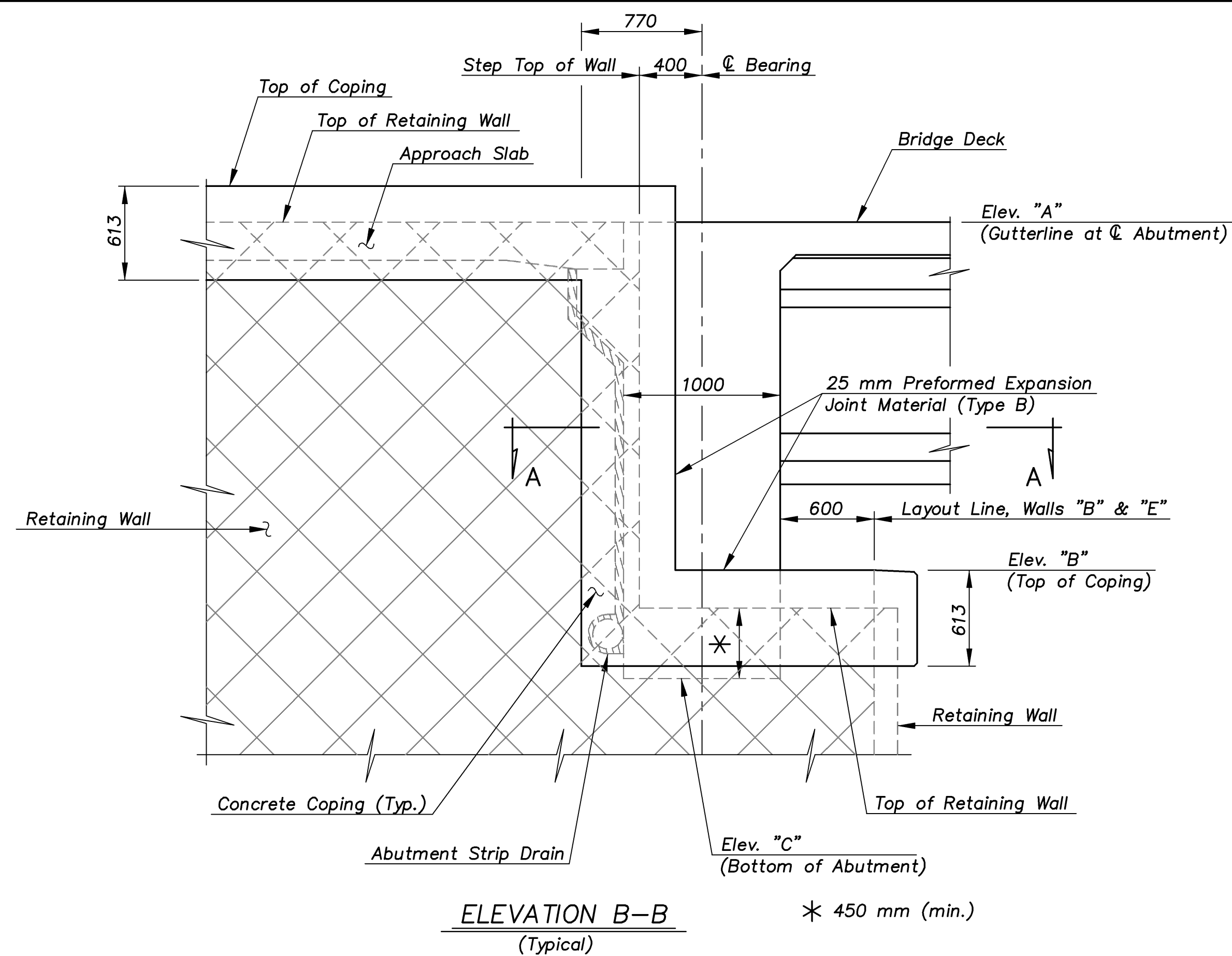


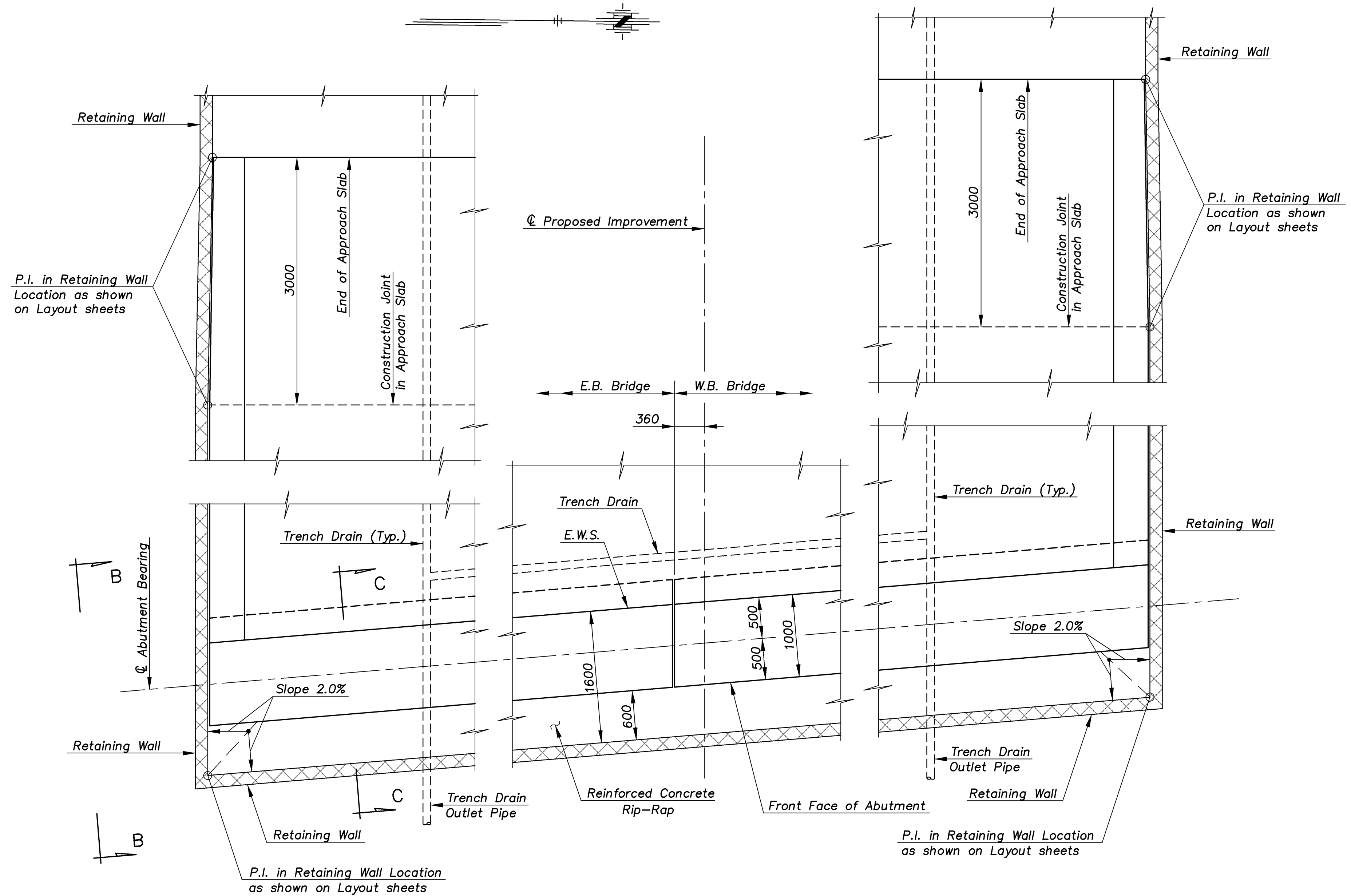
E.F. INDICATES EACH FACE.
N.F. INDICATES NEAR FACE.
F.F. INDICATES FAR FACE.

STATE	PROJECT NO.	YEAR	SHEET NO.	TOTAL SHEETS
KANSAS	54-87 K-8258-01	2007	170	556

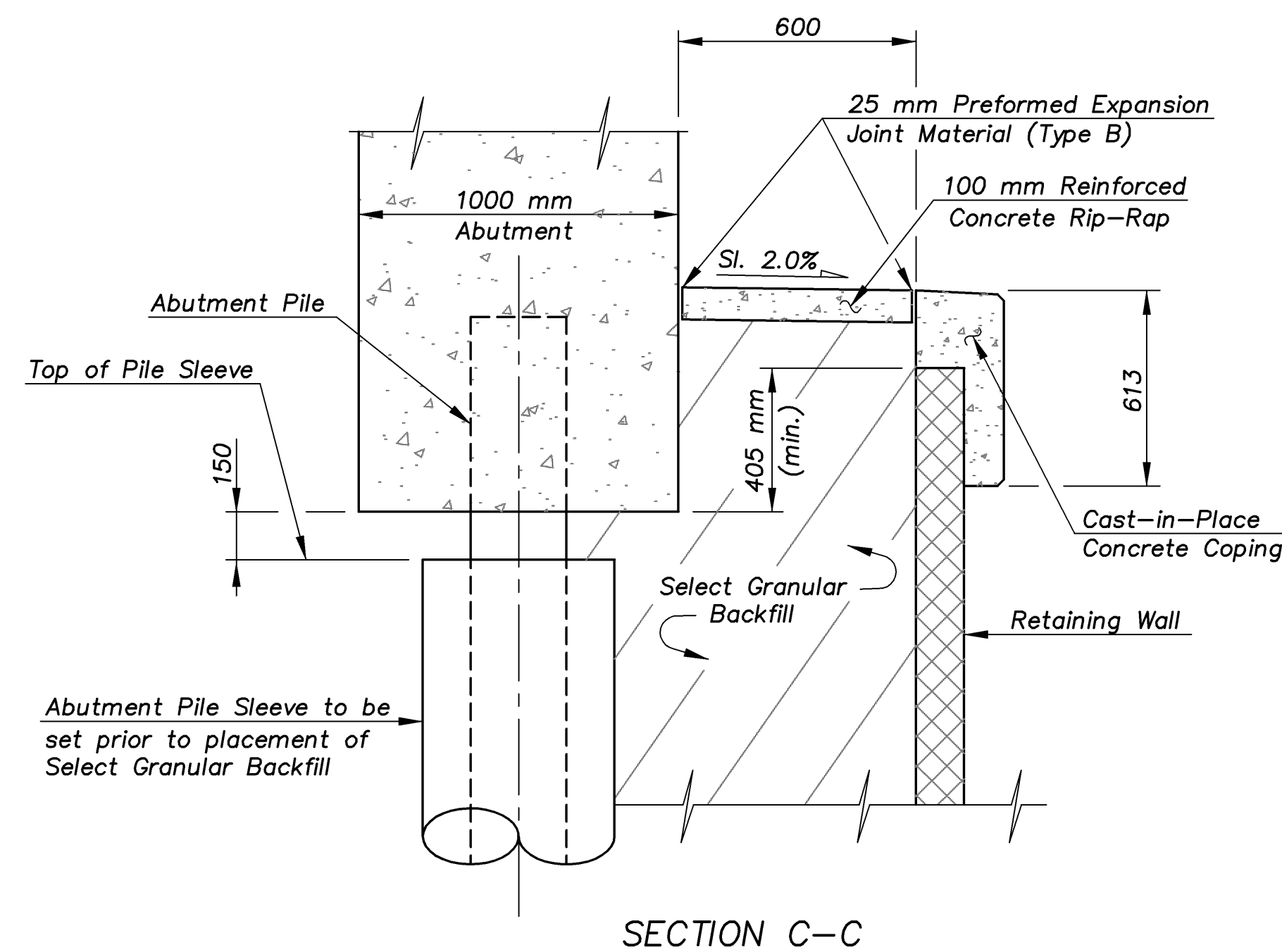


ELEVATION B-B
(Typical) * 450 mm (min.)

TABLE OF ELEVATIONS			
Retaining Wall	Elev. "A"	Elev. "B"	Elev. "C"
"A"	416.236	414.035	413.316
"B"	-	414.035	-
"C"	416.263	414.035	413.342
"D"	415.625	413.437	412.705
"E"	-	413.437	-
"F"	415.665	413.437	412.744

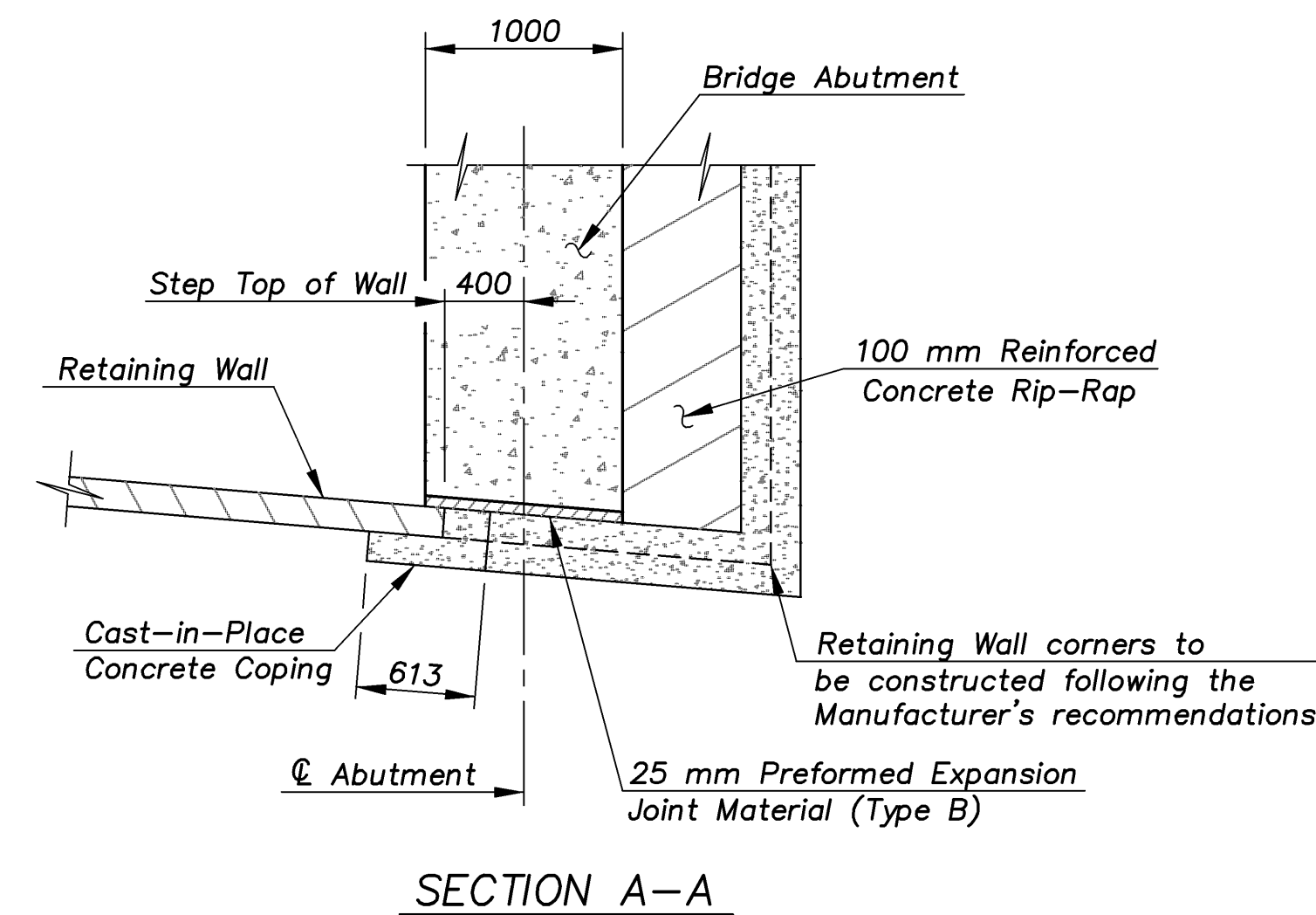


PLAN OF WALL AT ABUTMENT
(Abut. No. 1 shown, Abut. No. 2 similar)



SECTION C-C

NOTES:
The Reinforced Concrete Riprap shall be reinforced with #13 bars @ 300 mm each way at the center of the Riprap. Provide transverse 25 mm expansion joints filled with expansion joint material (Type B) at 7.5 meter centers. The Reinforced Concrete Riprap shall not be paid for directly, but shall be considered Subsidiary to the bid item "MSE-Retaining Walls".
Lateral bracing of the pile sleeves is required during wall construction. Method of bracing shall be approved by the Engineer. Bracing shall remain in service until the Engineer authorizes its removal.



SECTION A-A

MSE-WALL/DETAILS 1:100

KANSAS DEPARTMENT OF TRANSPORTATION		<p>Cook, Flatt & Strobel ENGINEERS, P. A.</p>	
<p>MSE-RETAINING WALL DETAILS (ARMOUR ROAD BRIDGE)</p>			
DESIGNED	R.S.C.	SCALE	Varies
DETAILED	T.R.G.	DATE	
Proj. No. 54-87 K-8258-01		SEDGWICK COUNTY	QUANTITIES T.R.G. SHEET 3 OF 8