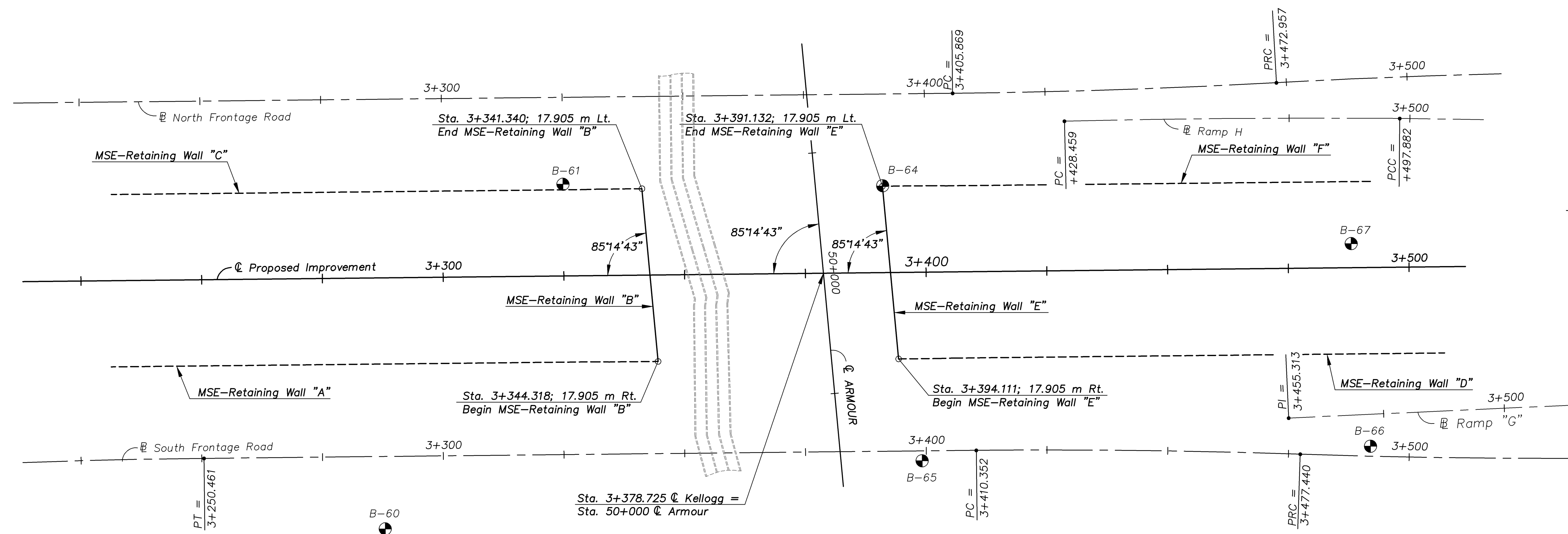
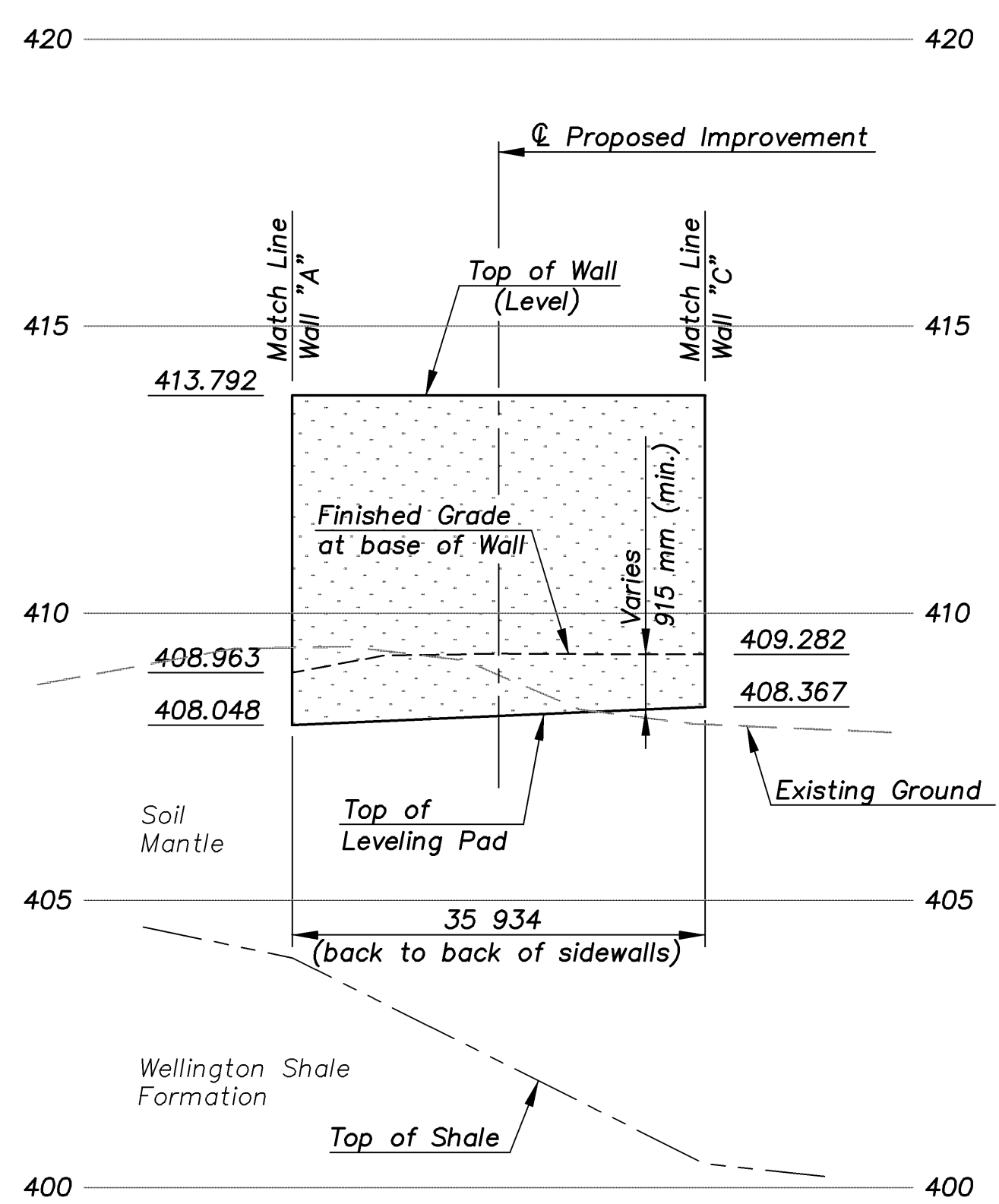


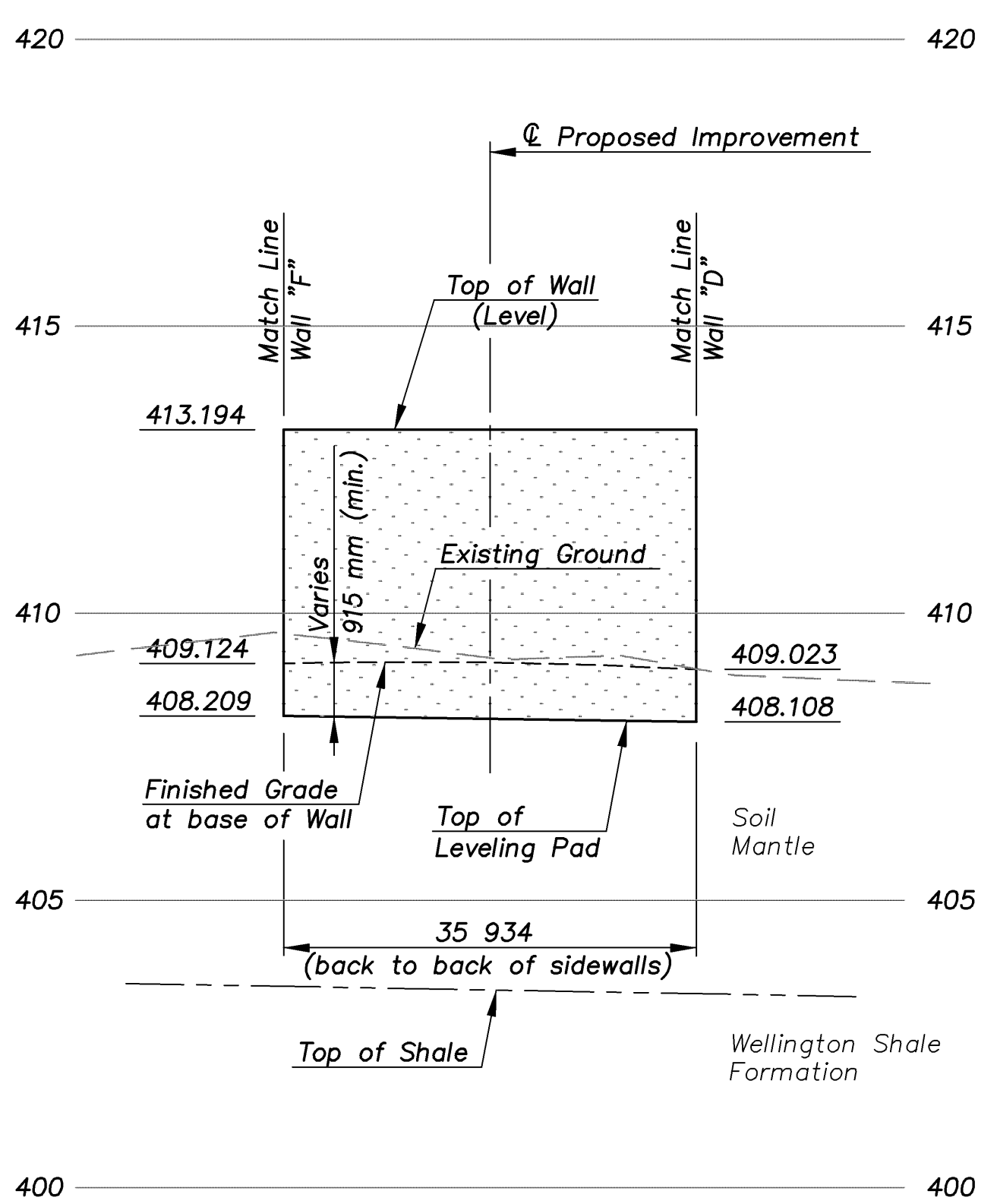
STATE	PROJECT NO.	YEAR	SHEET NO.	TOTAL SHEETS
KANSAS	54-87 K-8258-01	2007	172	556



LAYOUT OF WALL "B" & "E"
SCALE = 1:500




PROFILE OF WALL "B"
SCALE = 1:500 Horizontal
1:100 Vertical



PROFILE OF WALL "E"
SCALE = 1:500 Horizontal
1:100 Vertical

NOTES:

1. Stationing is along C Proposed Improvement. Stationing offsets shown are to the back face of the MSE-Retaining Wall.
2. Vertical curves shall be used on the coping to smooth out angle joints in the top of the retaining walls.
3. The retaining wall leveling pad is shown for illustration only. Wall supplier shall determine actual leveling pad geometry and elevation.
4. For typical wall sections and details see "MSE-Retaining Wall Details" sheets.

KANSAS DEPARTMENT OF TRANSPORTATION		 Cook, Flatt & Strobel ENGINEERS, P. A.
MSE-RETAINING WALL LAYOUT WALL "B" & "E" (ARMOUR ROAD BRIDGE)		
DESIGNED	R.S.C.	SCALE 1:500
DETAILED	T.R.G.	DATE
QUANTITIES	T.R.G.	SHEET 5 OF 8

MSE-WALL LAYOUT 1:500