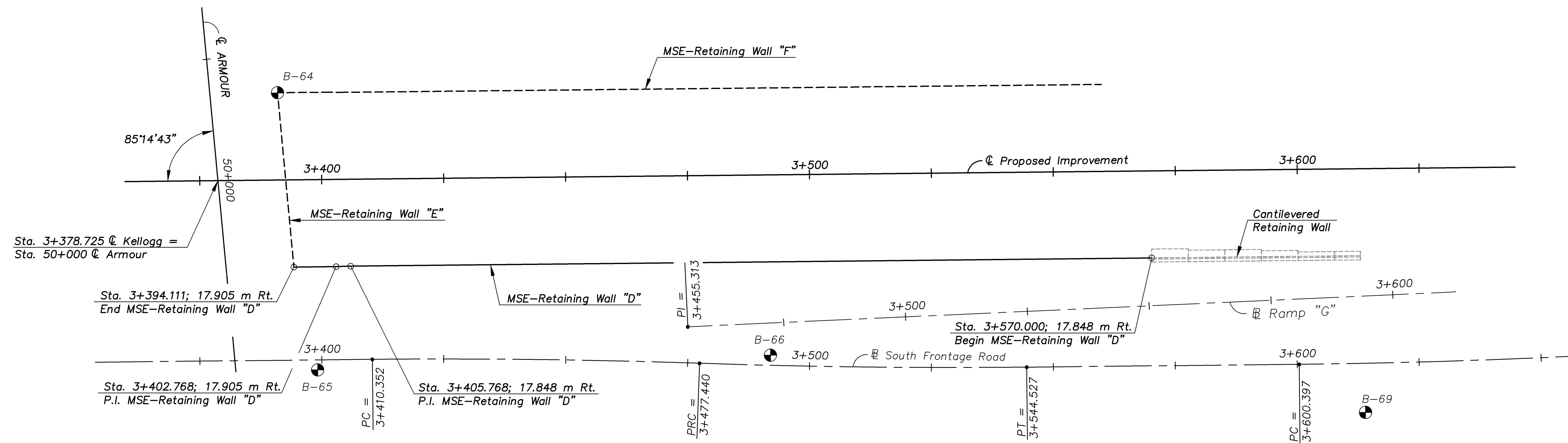
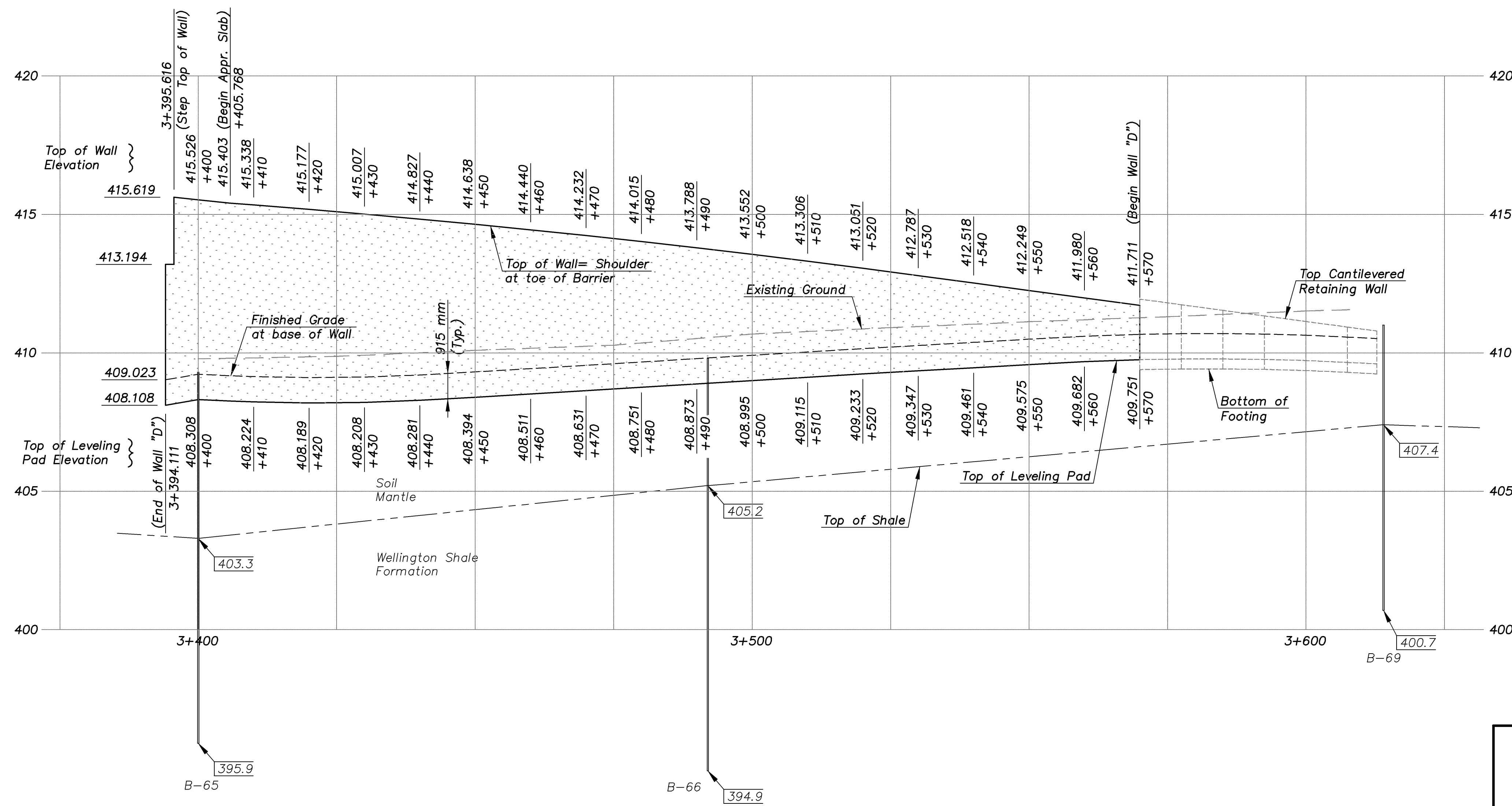


STATE	PROJECT NO.	YEAR	SHEET NO.	TOTAL SHEETS
KANSAS	54-87 K-8258-01	2007	174	556



**LAYOUT OF WALL "D"**  
SCALE = 1:500



**PROFILE OF WALL "D"**  
SCALE = 1:500 Horizontal  
1:100 Vertical

- NOTES:**
1. Stationing is along  $\text{C}$  Proposed Improvement. Stationing offsets shown are to the back face of the MSE-Retaining Wall.
  2. Vertical curves shall be used on the coping to smooth out angle joints in the top of the retaining walls.
  3. The retaining wall leveling pad is shown for illustration only. Wall supplier shall determine actual leveling pad geometry and elevation.
  4. For typical wall sections and details see "MSE-Retaining Wall Details" sheets.

KANSAS DEPARTMENT OF TRANSPORTATION

**MSE-RETAINING WALL LAYOUT  
WALL "D"**  
(ARMOUR ROAD BRIDGE)

**CFS**  
Cook, Flatt & Strobel  
ENGINEERS, P. A.

DESIGNED	R.S.C.	SCALE	1:500
DETAILED	T.R.G.	DATE	
QUANTITIES	T.R.G.	SHEET	7 OF 8

Proj. No. 54-87 K-8258-01 SEDGWICK COUNTY

MSE-WALL LAYOUT 1:500