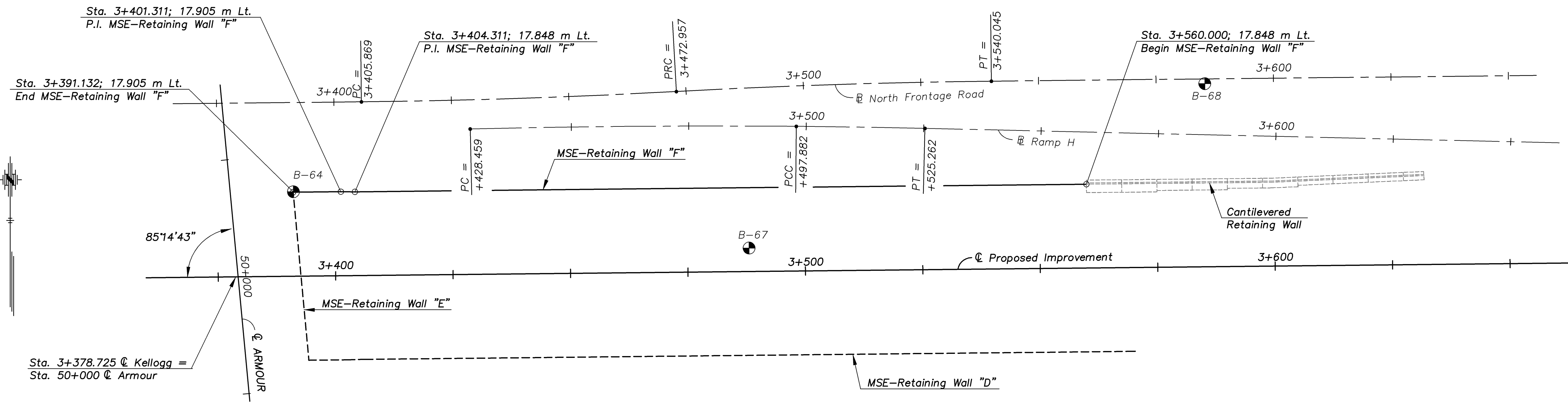
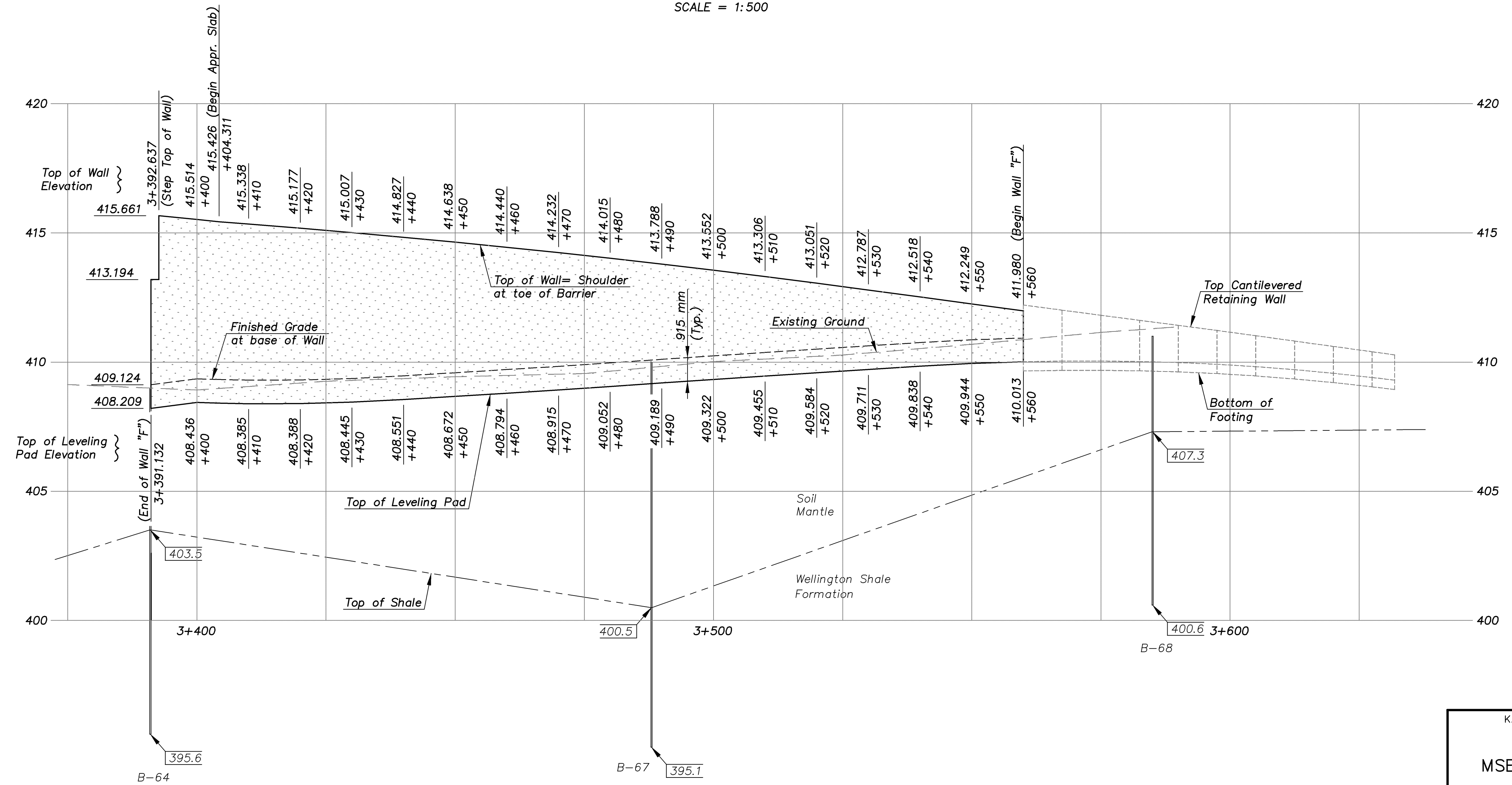


STATE	PROJECT NO.	YEAR	SHEET NO.	TOTAL SHEETS
KANSAS	54-87 K-8258-01	2007	175	556



LAYOUT OF WALL "F"
SCALE = 1:500



PROFILE OF WALL "F"
SCALE = 1:500 Horizontal
1:100 Vertical

- NOTES:
1. Stationing is along C Proposed Improvement. Stationing offsets shown are to the back face of the MSE-Retaining Wall.
 2. Vertical curves shall be used on the coping to smooth out angle joints in the top of the retaining walls.
 3. The retaining wall leveling pad is shown for illustration only. Wall supplier shall determine actual leveling pad geometry and elevation.
 4. For typical wall sections and details see "MSE-Retaining Wall Details" sheets.

MSE-WALL LAYOUT 1:500

KANSAS DEPARTMENT OF TRANSPORTATION

MSE-RETAINING WALL LAYOUT
WALL "F"
(ARMOUR ROAD BRIDGE)

CFS
Cook, Flatt & Strobel
ENGINEERS, P. A.

DESIGNED	R.S.C.	SCALE	1:500
DETAILED	T.R.G.	DATE	
QUANTITIES	T.R.G.	SHEET	B OF 8

Proj. No. 54-87 K-8258-01 SEDGWICK COUNTY