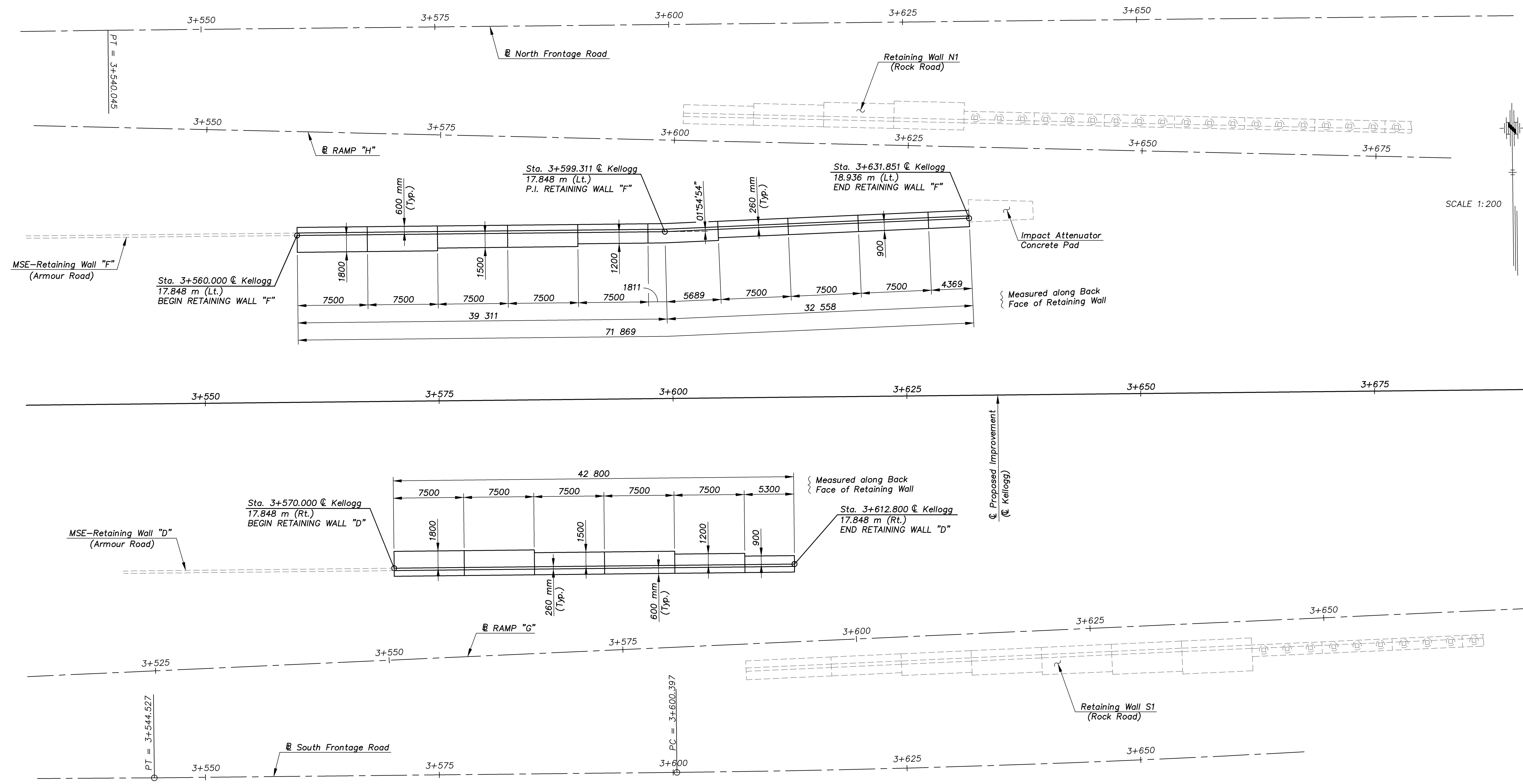



STATE	PROJECT NO.	YEAR	SHEET NO.	TOTAL SHEETS
KANSAS	54-87 K-8258-01	2007	176	556



MISC-WALLS DETAILS 1:200

KANSAS DEPARTMENT OF TRANSPORTATION		 Cook, Flatt & Strobel ENGINEERS, P. A.	
CANTILEVERED RETAINING WALLS (ARMOUR ROAD BRIDGE)			
DESIGNED	R.S.C.	SCALE	Noted
DETAILED	T.R.G.	DATE	
QUANTITIES	T.R.G.	SHEET	3 OF 7

Proj. No. 54-87 K-8258-01 SEDGWICK COUNTY