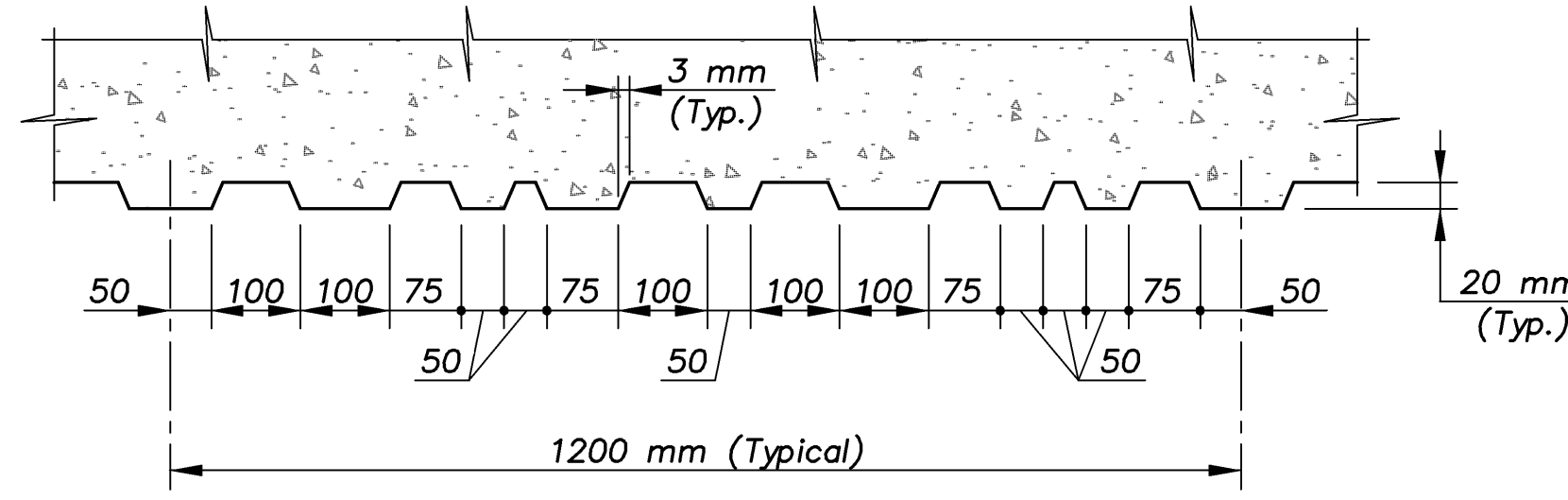


WALL "A" REINFORCING STEEL SUMMARY										
PANEL	MARK	NO.	MARK	NO.	MARK	NO.	MARK	NO.	MARK	NO.
A	WH1	21	WBV1	25	WV1	25				
B	WH1	21	WBV2	25	WV1	25				
C	WH1	19	WBV3	25	WV2	25				
D	WH1	19	WBV4	25	WV2	25				
E	WH1	17	WBV5	25	WV3	25				
F	WH1	17	WBV6	25	WV3	25				
G	WH1	15	WBV7	25	WV4	25				
H	WH1	15	WBV8	25	WV4	25				
I	WH1	15	WBV8	25	WV4	25				
J	WH1	15	WBV9	25	WV4	25				
K	WH2	14	WBV10	21	WV4	21				

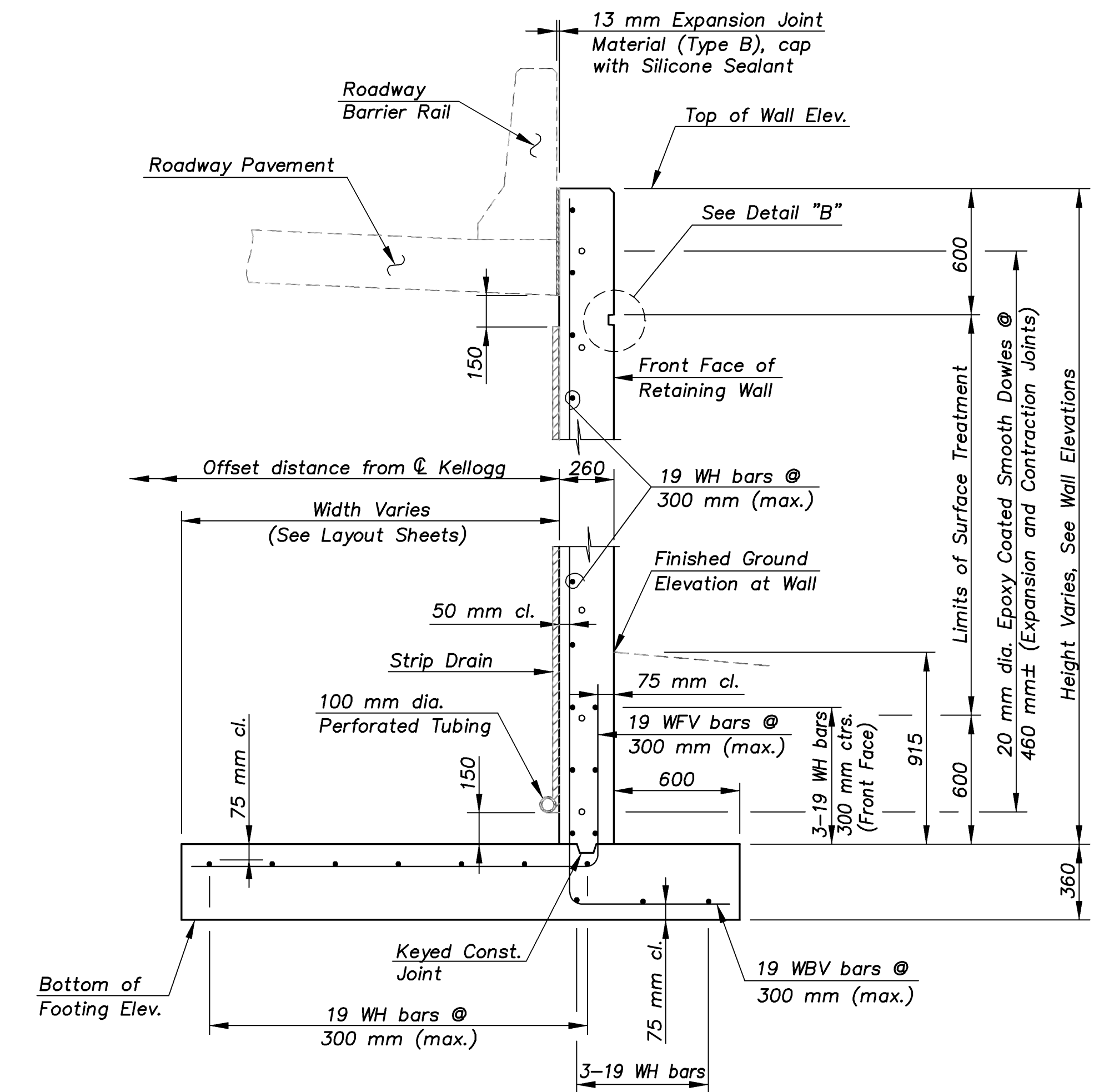
WALL "C" REINFORCING STEEL SUMMARY										
PANEL	MARK	NO.	MARK	NO.	MARK	NO.	MARK	NO.	MARK	NO.
A	WH1	20	WBV1	25	WV1	25				
B	WH1	20	WBV2	25	WV1	25				
C	WH1	19	WBV3	25	WV2	25				
D	WH1	18	WBV4	25	WV2	25				
E	WH1	18	WBV5	25	WV2	25				
F	WH1	16	WBV6	25	WV3	25				
G	WH1	16	WBV7	25	WV3	25				
H	WH1	14	WBV8	25	WV4	25				
I	WH1	14	WBV9	25	WV4	25				
J	WH2	14	WBV10	15	WV4	15				

WALL "D" REINFORCING STEEL SUMMARY										
PANEL	MARK	NO.	MARK	NO.	MARK	NO.	MARK	NO.	MARK	NO.
A	WH1	21	WBV1	25	WV1	25				
B	WH1	20	WBV2	25	WV1	25				
C	WH1	18	WBV3	25	WV2	25				
D	WH1	18	WBV4	25	WV2	25				
E	WH1	16	WBV5	25	WV3	25				
F	WH2	15	WBV6	18	WV4	18				

WALL "F" REINFORCING STEEL SUMMARY										
PANEL	MARK	NO.	MARK	NO.	MARK	NO.	MARK	NO.	MARK	NO.
A	WH1	21	WBV1	25	WV1	25				
B	WH1	20	WBV2	25	WV1	25				
C	WH1	18	WBV3	25	WV2	25				
D	WH1	18	WBV4	25	WV2	25				
E	WH1	16	WBV5	25	WV3	25				
F	WH1	16	WBV6	25	WV3	25				
G	WH1	14	WBV7	25	WV4	25				
H	WH1	14	WBV8	25	WV4	25				
I	WH1	14	WBV9	25	WV4	25				
J	WH2	14	WBV9	15	WV4	15				

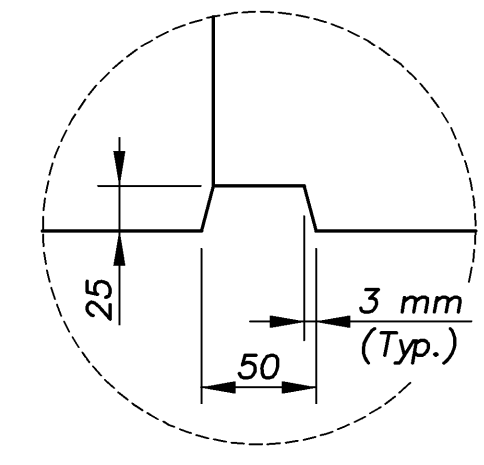


**SURFACE TREATMENT DETAIL**  
(Repeating High/Low Board Pattern)

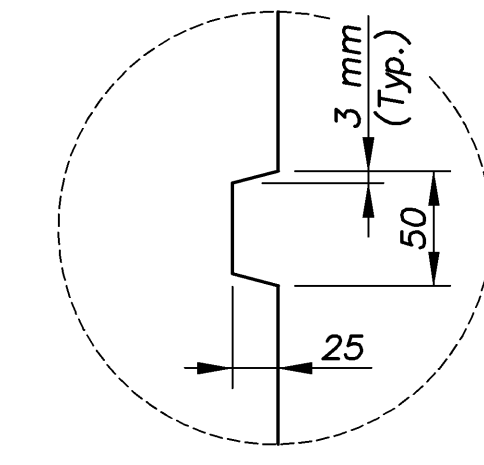


**TYPICAL RETAINING WALL SECTION**

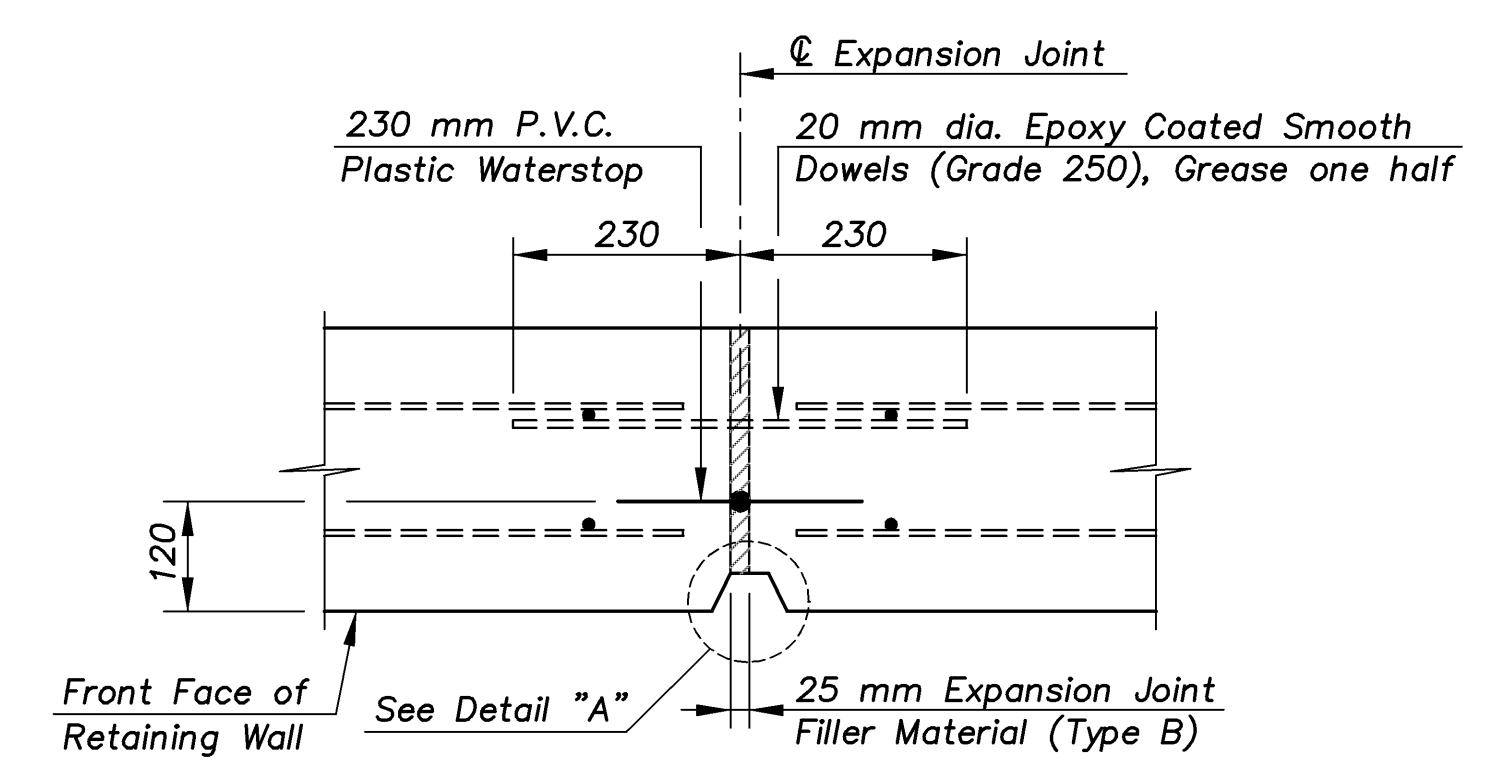
- WALL "A" (PANELS A THRU K)
- WALL "C" (PANELS A THRU J)
- WALL "D" (PANELS A THRU F)
- WALL "F" (PANELS A THRU J)



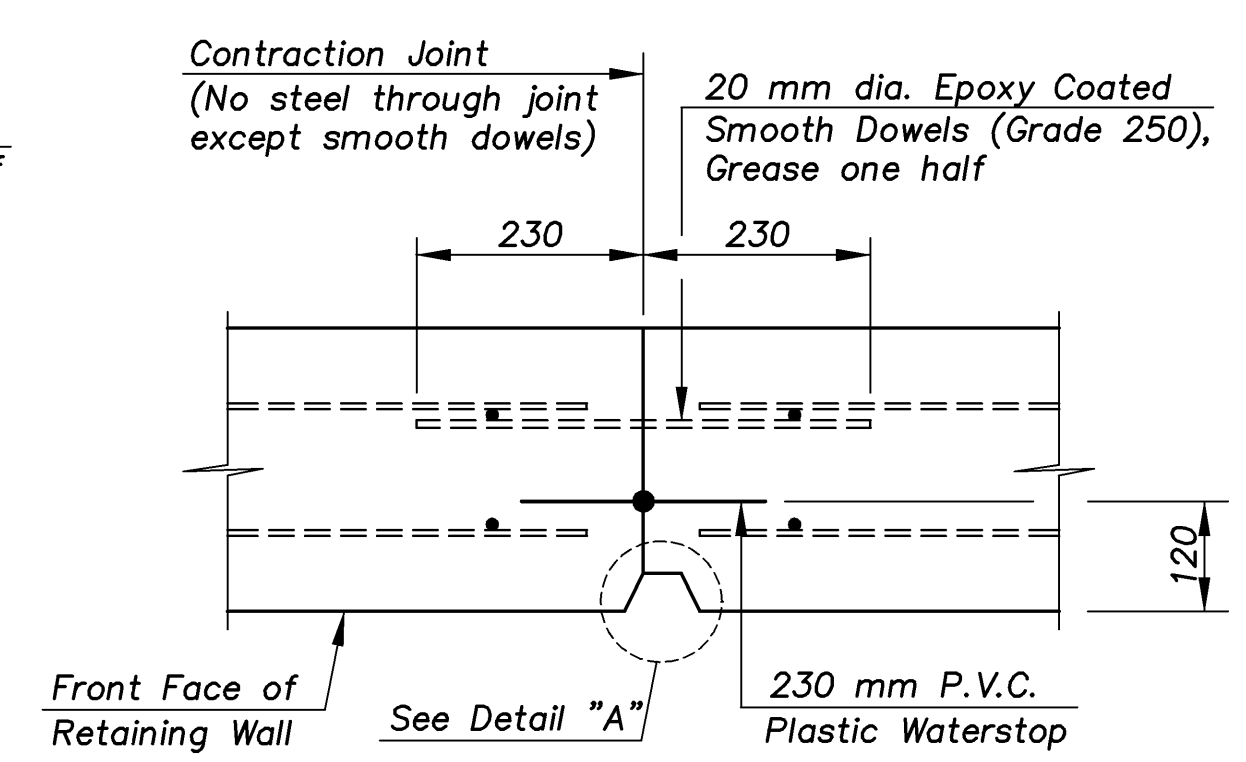
**DETAIL "A"**



**DETAIL "B"**



**EXPANSION JOINT DETAIL**



**CONTRACTION JOINT DETAIL**

**NOTE:** Expansion and Contraction Joints shall extend from top of the wall to the top of wall or barrier. A minimum of one day must elapse between placement of wall concrete on adjacent sides of contraction joint.

MISC-WALLS DETAILS 1:200

KANSAS DEPARTMENT OF TRANSPORTATION		<b>Cook, Flatt &amp; Strobel</b> ENGINEERS, P. A.	
<b>RETAINING WALL DETAILS</b> (ARMOUR ROAD BRIDGE)			
DESIGNED	R.S.C.	SCALE	
DETAILED	T.R.G.	DATE	
Proj. No.	54-87 K-8258-01	SEDGWICK COUNTY	QUANTITIES T.R.G. SHEET 6 OF 7