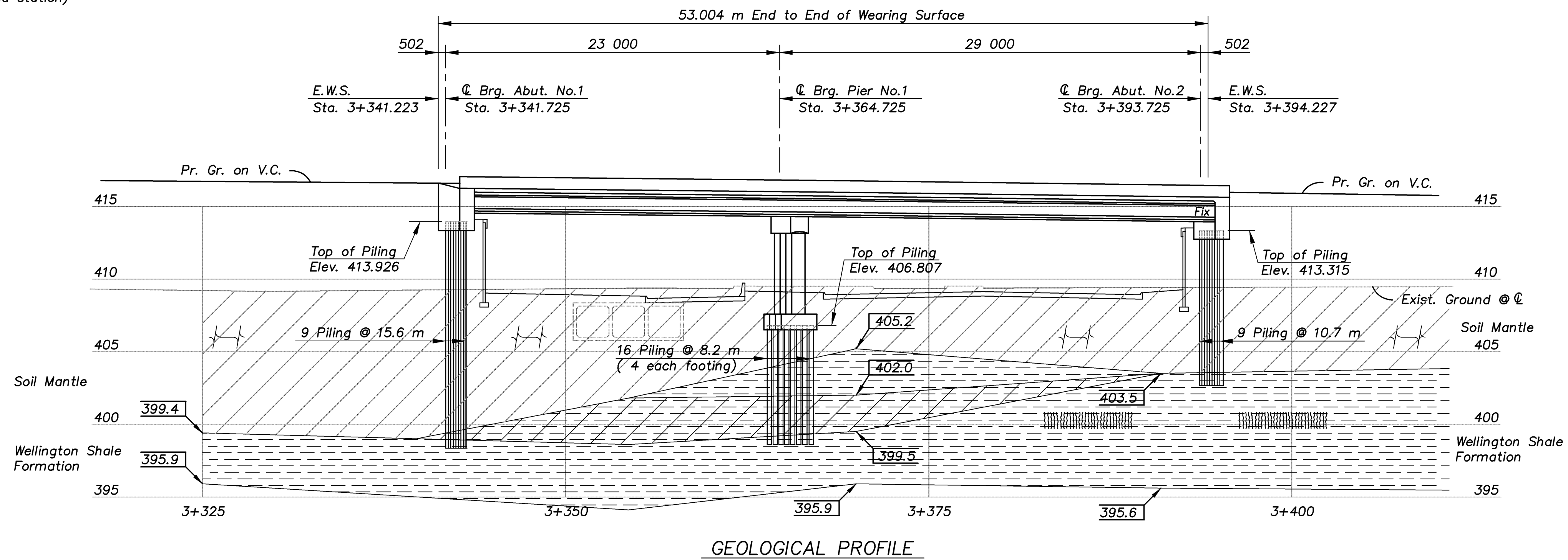
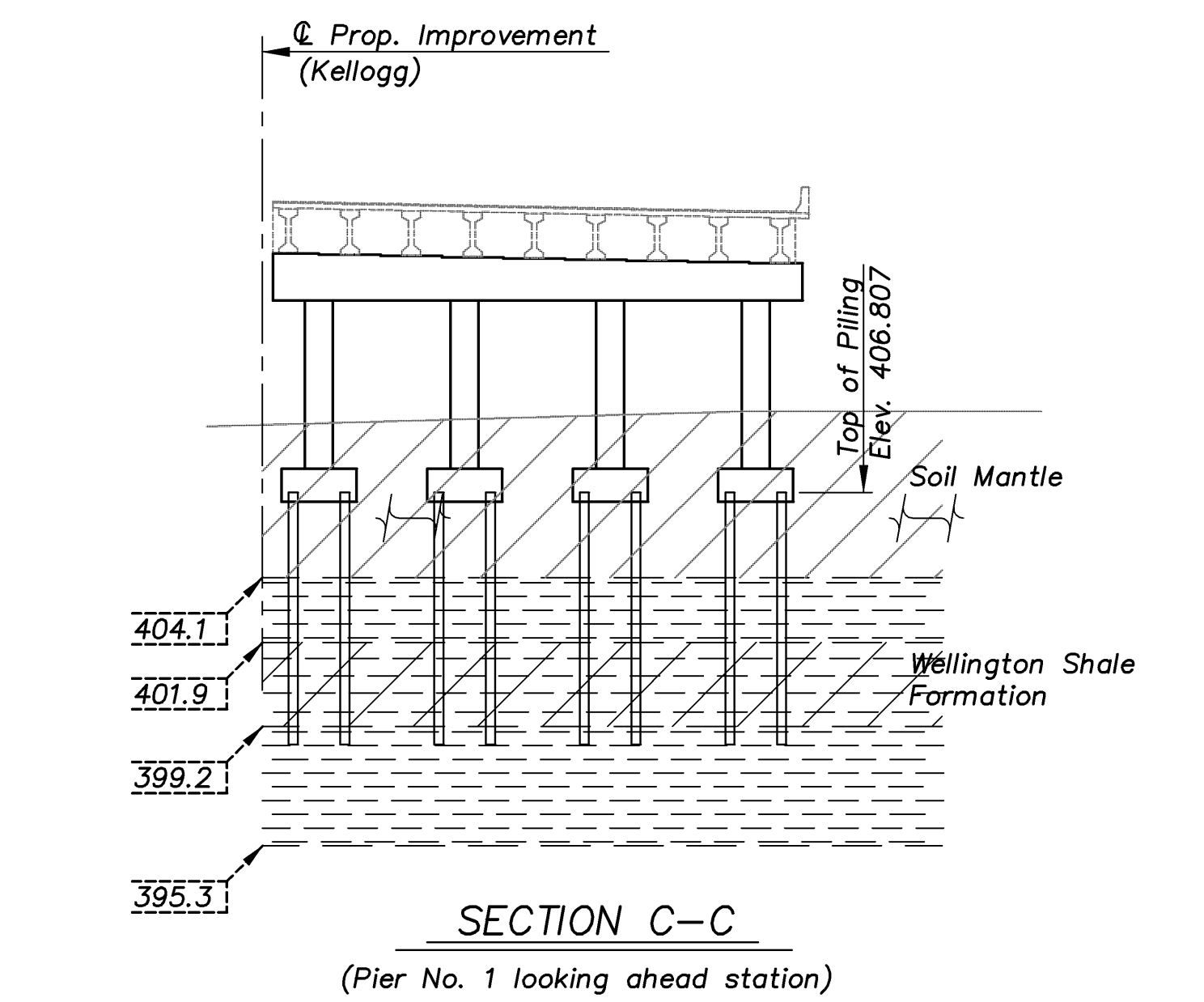
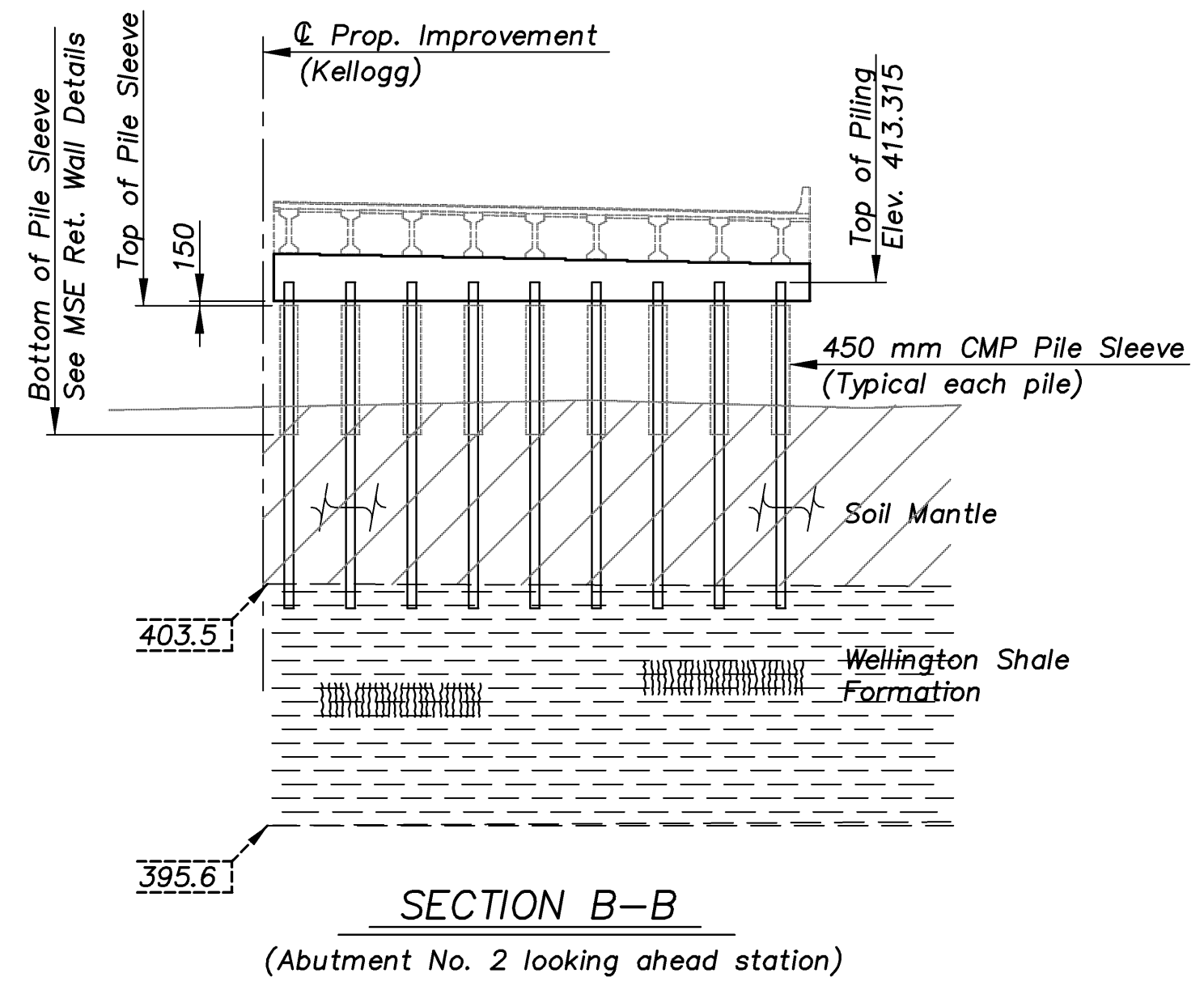
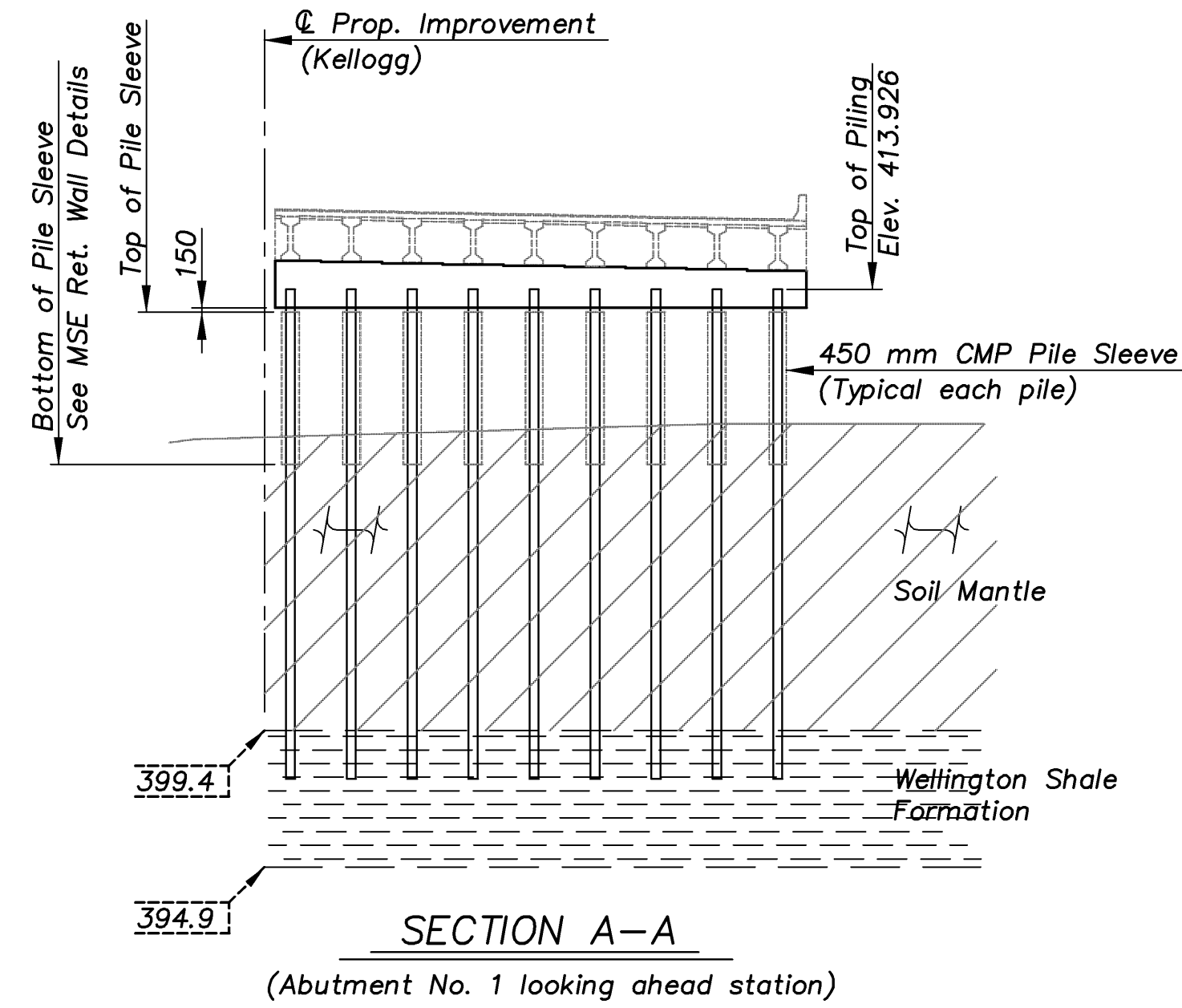
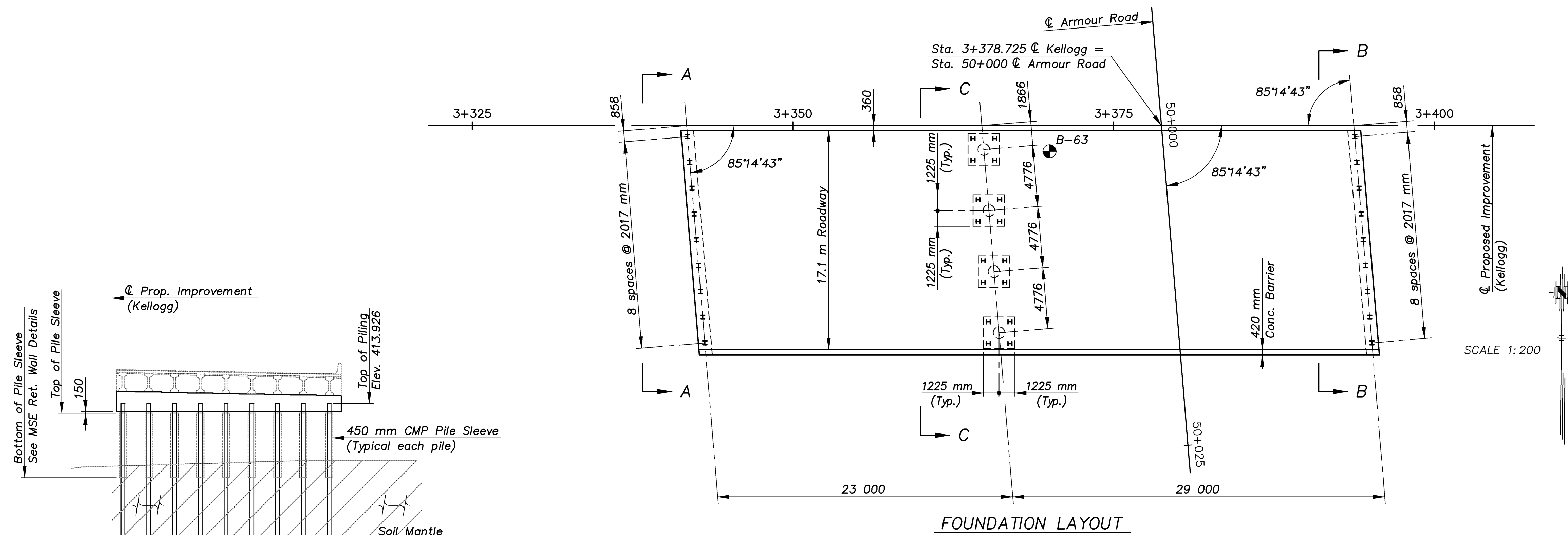
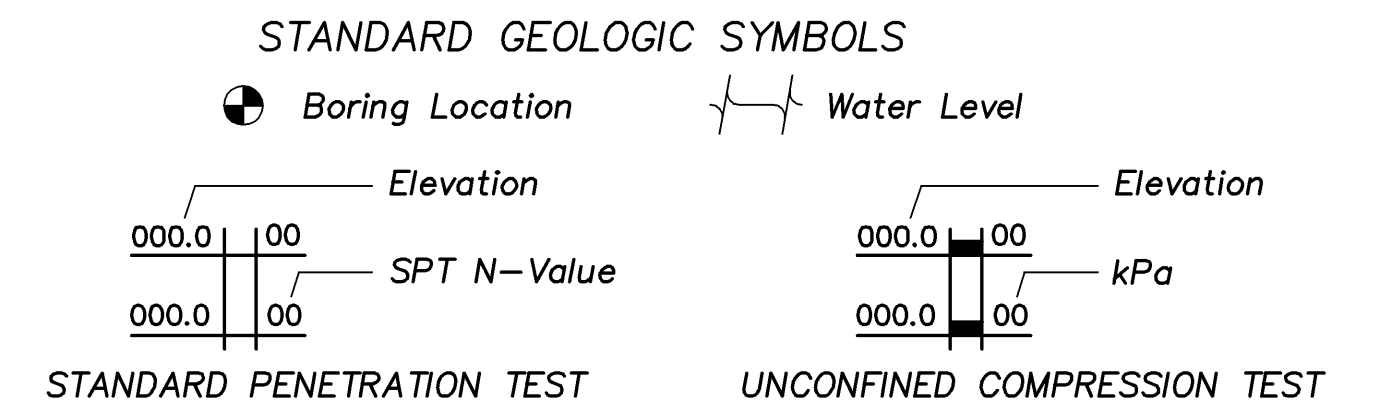
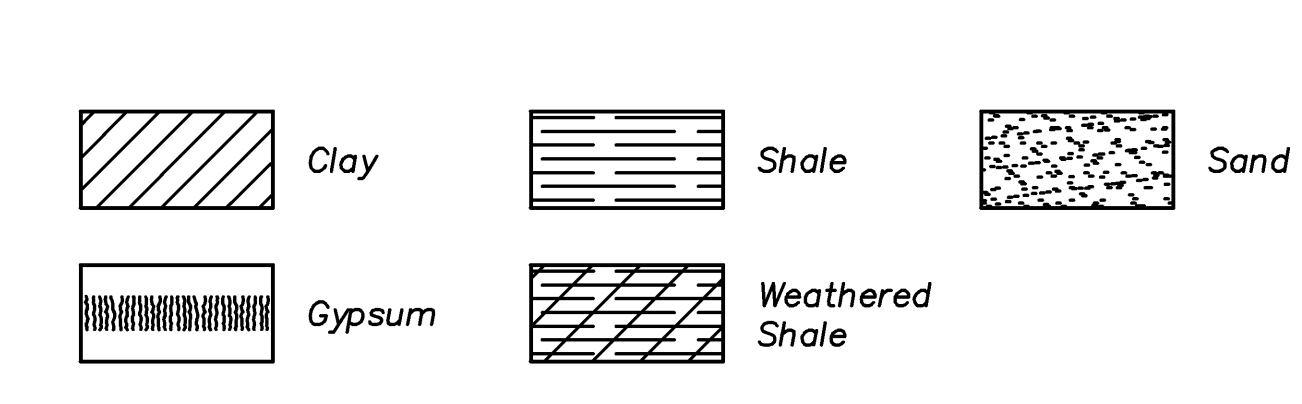


STATE	PROJECT NO.	YEAR	SHEET NO.	TOTAL SHEETS
KANSAS	54-87 K-8258-01	2007	186	556



ARMOUR/GEOLGY 1:200



000.0 | 00
000.0 | 00
000.0 | 00

000.0 | 00
000.0 | 00

NOTES:
THE SOUNDINGS SHOWN ON THESE PLANS ARE TAKEN FROM NOTES OBTAINED IN THE FIELD AND REPRESENT THE BEST INFORMATION AVAILABLE.

THE COMPLETE LOGS AND LABORATORY TEST DATA ARE IN THE FILES OF THE ENGINEER AND ARE AVAILABLE AT THEIR OFFICE AT TOPEKA, KANSAS FOR INSPECTION BY INTERESTED AND QUALIFIED BIDDERS.

KANSAS DEPARTMENT OF TRANSPORTATION		CFS Cook, Flatt & Strobel ENGINEERS, P. A.
BR. NO. 54-87-30.82(701) E.B.	STA. 3+378.725	
ENGINEERING GEOLOGY		
KELLOGG AVENUE OVER ARMOUR		
DESIGNED R.S.C.	SCALE Varies	QUANTITIES T.R.G. SHEET 6 OF 39
DATE	DATE	
Proj. No. 54-87 K-8258-01 SEDGWICK COUNTY		