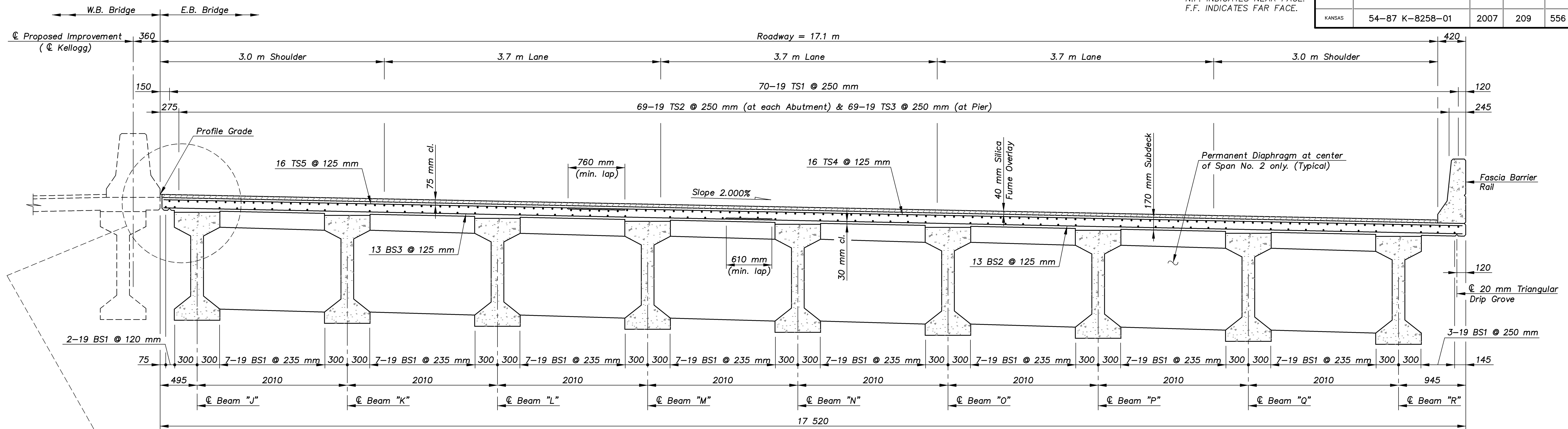
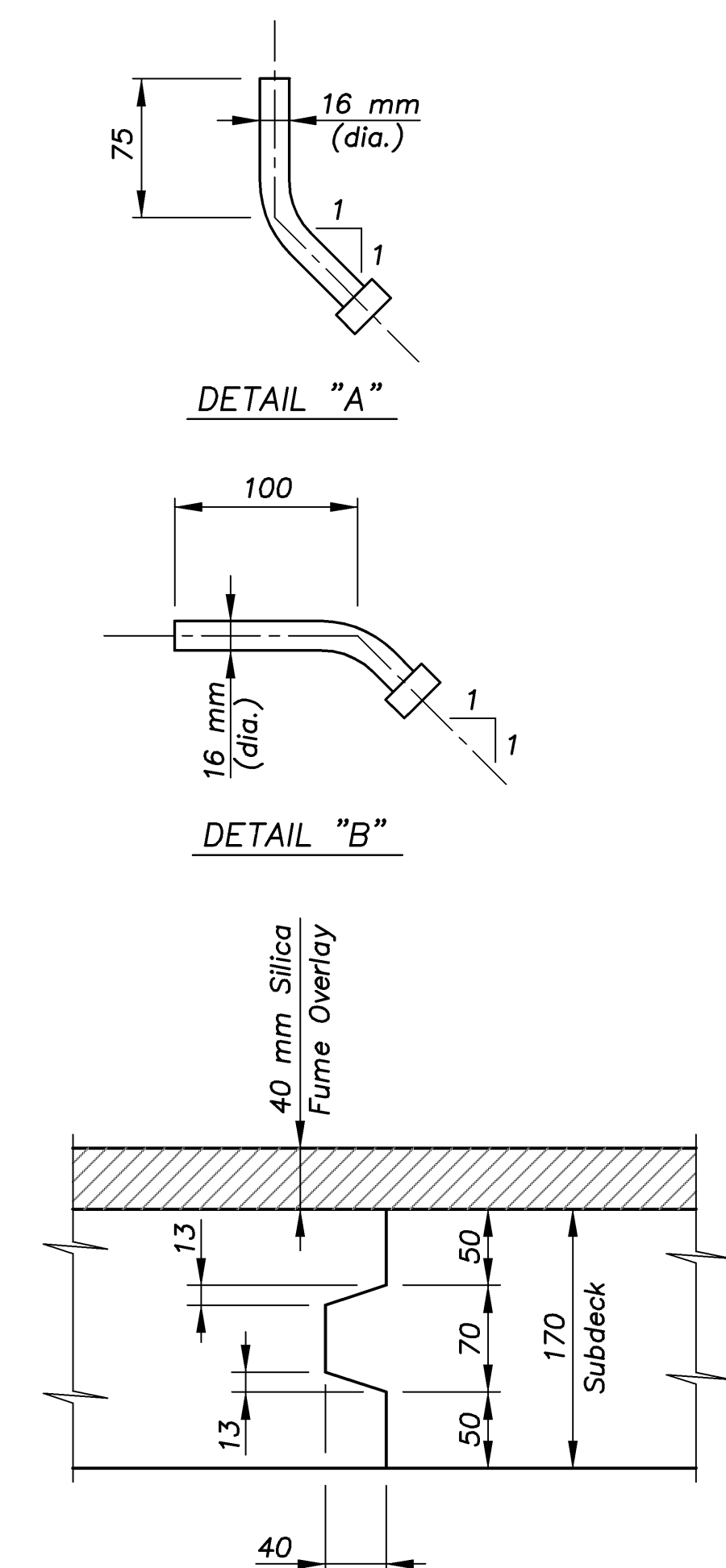
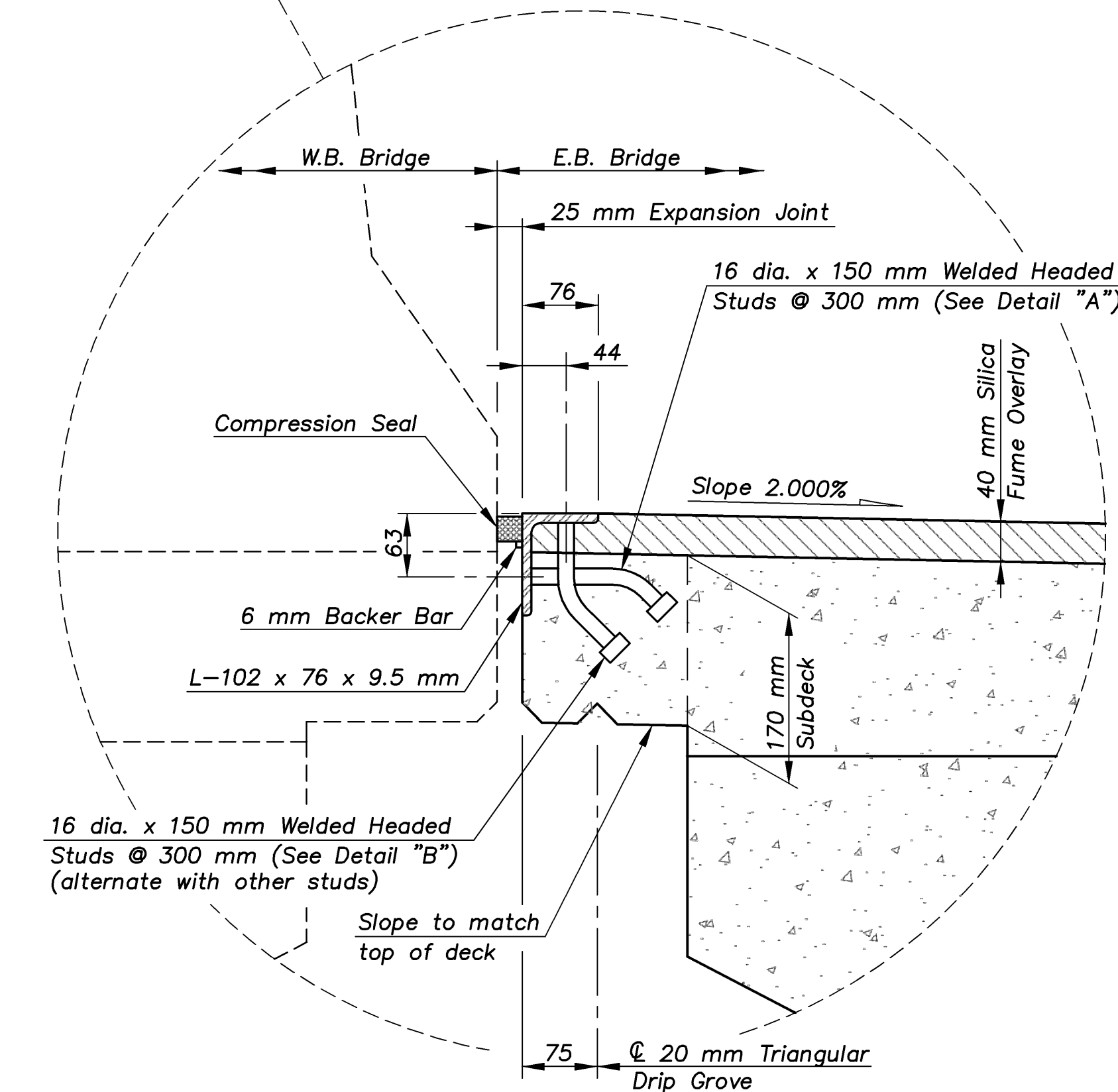


E.F. INDICATES EACH FACE.
N.F. INDICATES NEAR FACE.
F.F. INDICATES FAR FACE.

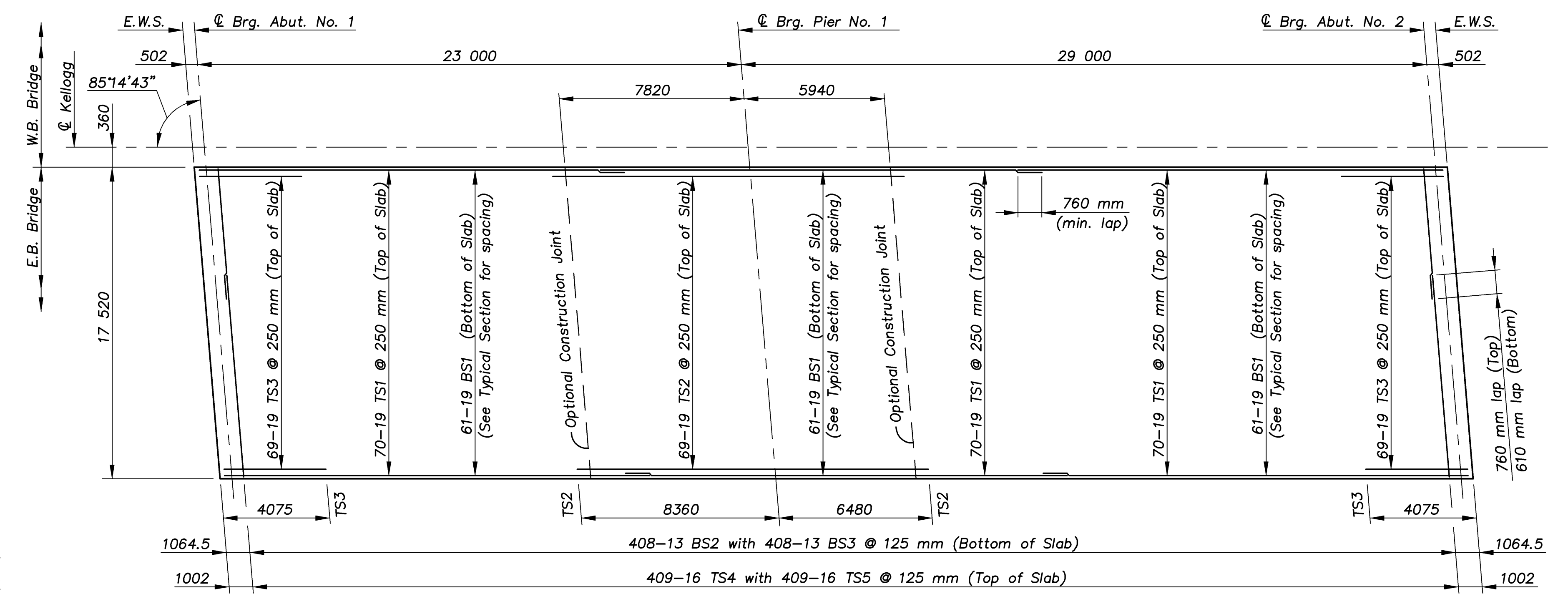
STATE	PROJECT NO.	YEAR	SHEET NO.	TOTAL SHEETS
KANSAS	54-87 K-8258-01	2007	209	556



TYPICAL SECTION



OPTIONAL CONSTRUCTION JOINT



SLAB REINFORCEMENT PLAN

NOTE: Structural steel for the deck joint shall conform to the requirements for ASTM A709M Grade 250 steel and shall be galvanized after fabrication. The steel angles, backer bar and headed studs will not be paid for directly but shall be Subsidiary to the unit price bid for "Elastomeric Compression Seal".

NOTE: The Elastomeric Compression Seal shall extend continuously from end to end of wearing surface. The seal shall be bonded to the steel angle and recessed 3 mm from the top of the angle. The elastomeric compression seal width shall be determined per manufacturer's recommendation for a 25 mm joint opening. See KDOT Standard Specifications.

KANSAS DEPARTMENT OF TRANSPORTATION
BR. NO. 54-87-30.82(701) E.B. STA. 3+378.725

CFS
Cook, Flatt & Strobel
ENGINEERS, P. A.

SUPERSTRUCTURE DETAILS
KELLOGG AVENUE OVER ARMOUR ROAD

DESIGNED R.S.C. SCALE Varies
DETAILED T.R.G. DATE
QUANTITIES T.R.G. SHEET 29 OF 39

Proj. No. 54-87 K-8258-01 SEDGWICK COUNTY

1:100
ARMOUR/SLAB