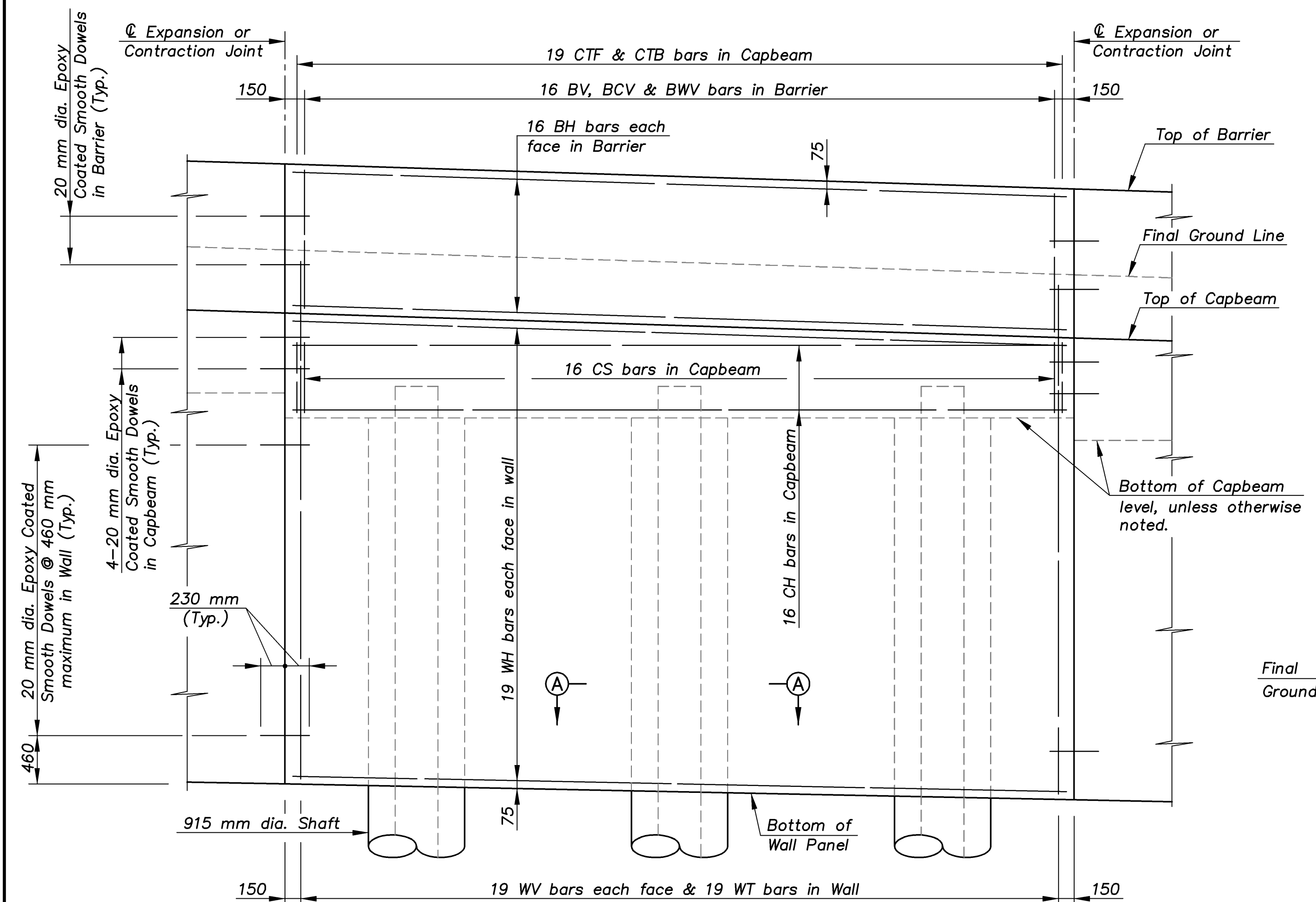
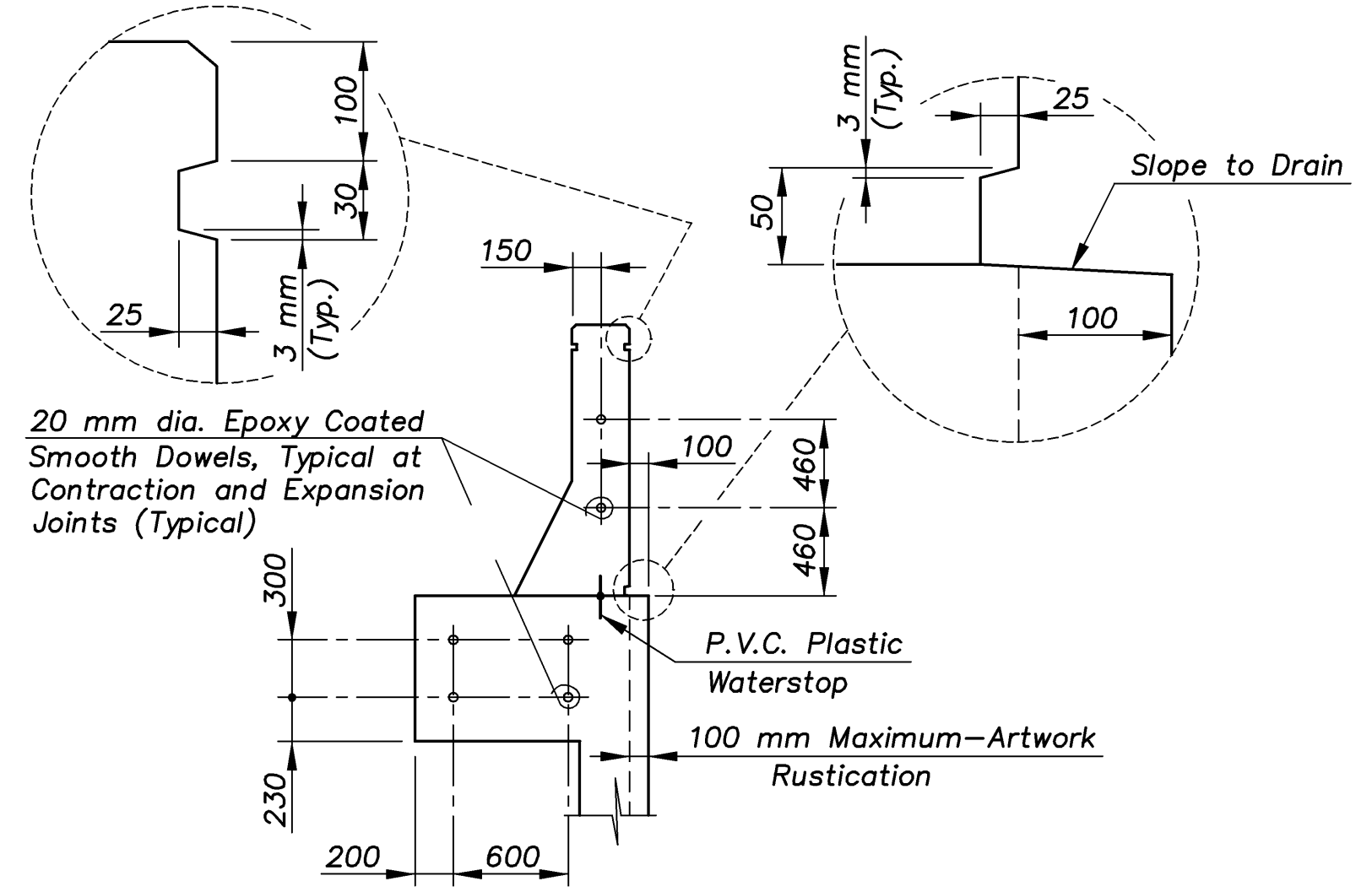


STATE	PROJECT NO.	YEAR	SHEET NO.	TOTAL SHEETS
KANSAS	54-87 K-8258-01	2007	235	556

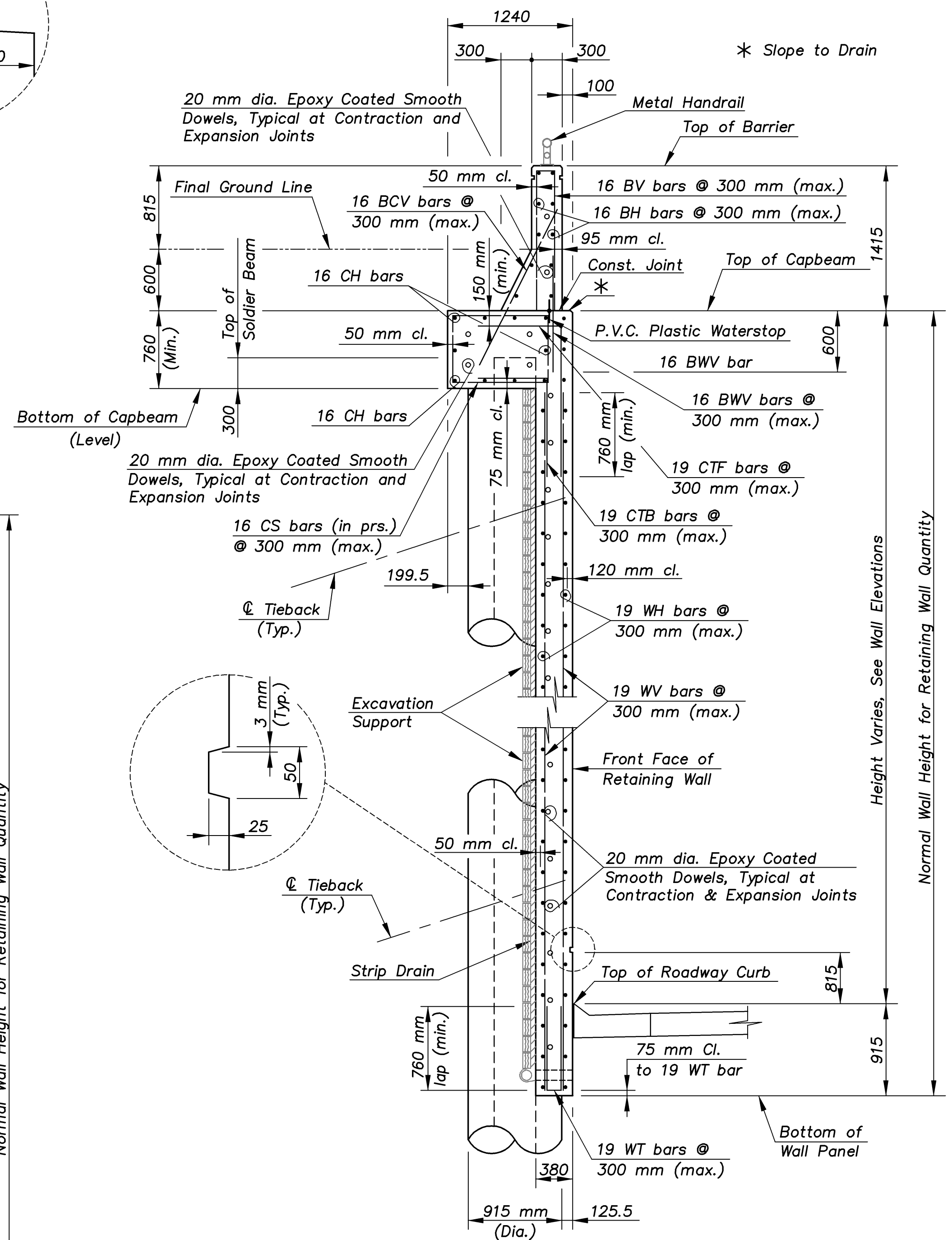
E.F. INDICATES EACH FACE.  
N.F. INDICATES NEAR FACE.  
F.F. INDICATES FAR FACE.



**TYPICAL WALL PANEL REINFORCING**  
(Except Wall N2, Panel J)

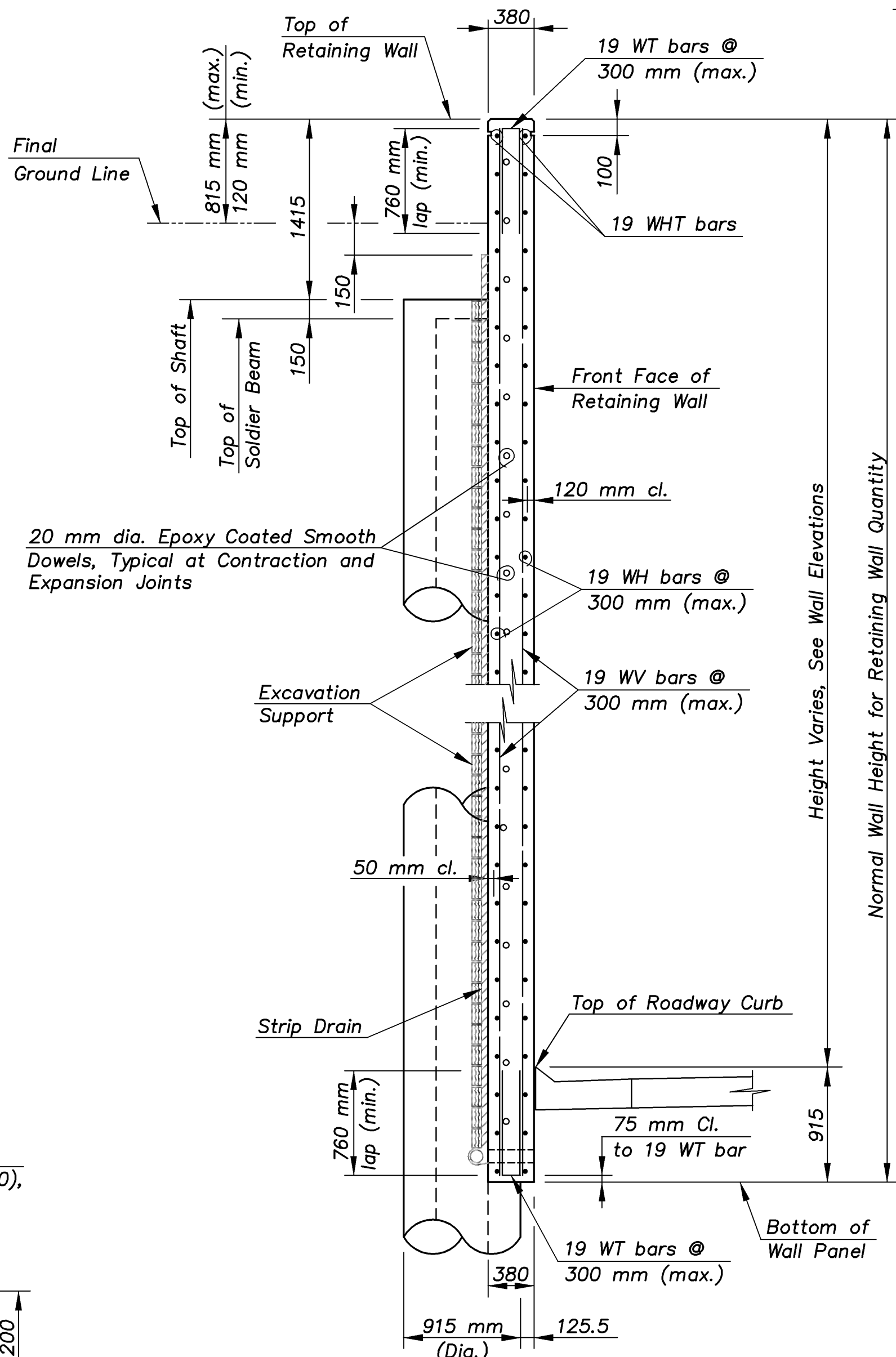


**WATERSTOP & DOWEL BAR LAYOUT**



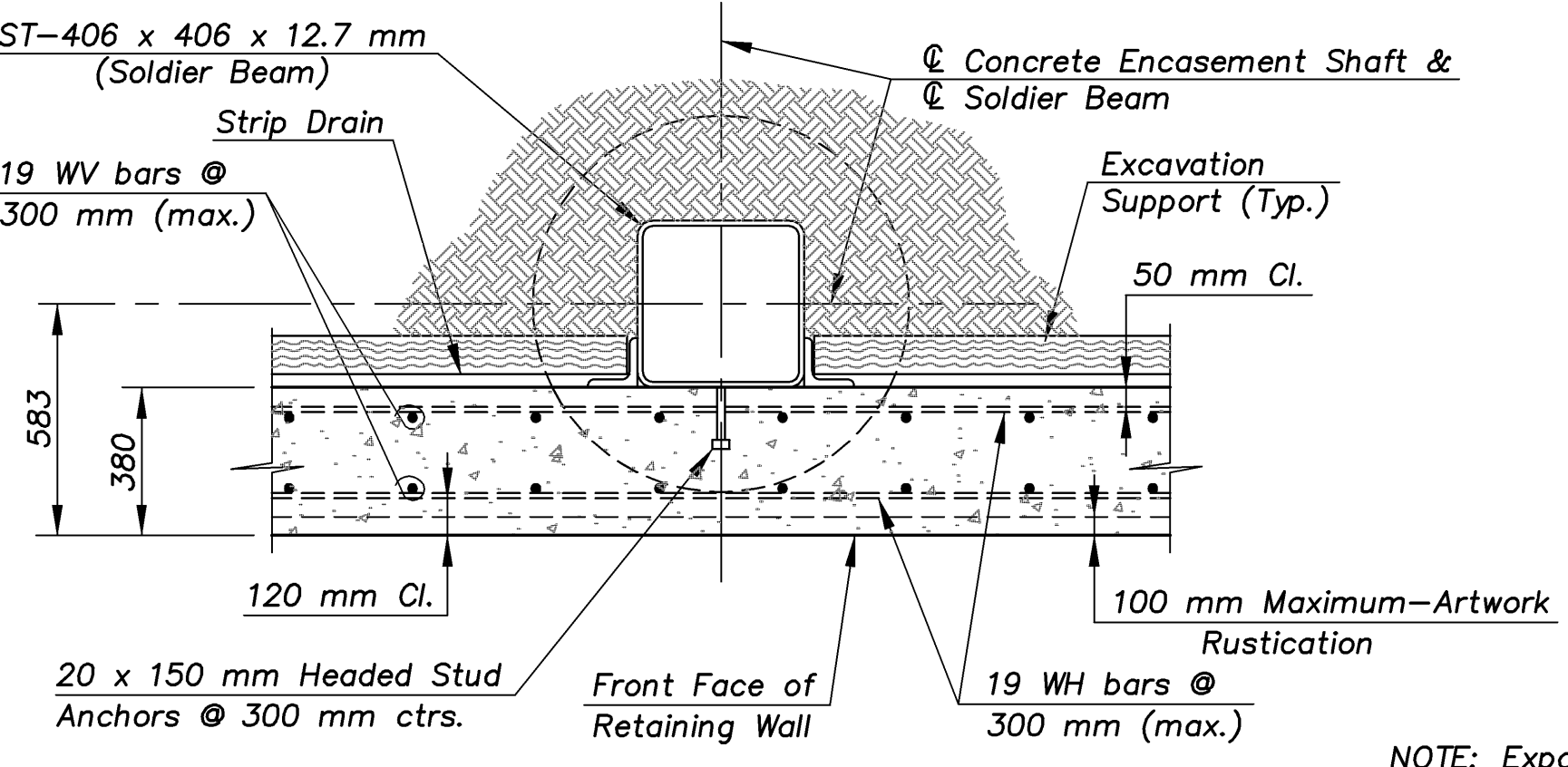
**TYPICAL RETAINING WALL SECTION**

- WALL N1 (PANELS A THRU BB)
- WALL N2 (PANELS A THRU I & K THRU Q)
- WALL N2A (PANELS A THRU X)
- WALL S1 (PANELS A THRU X)
- WALL S2 (PANELS A THRU KK)

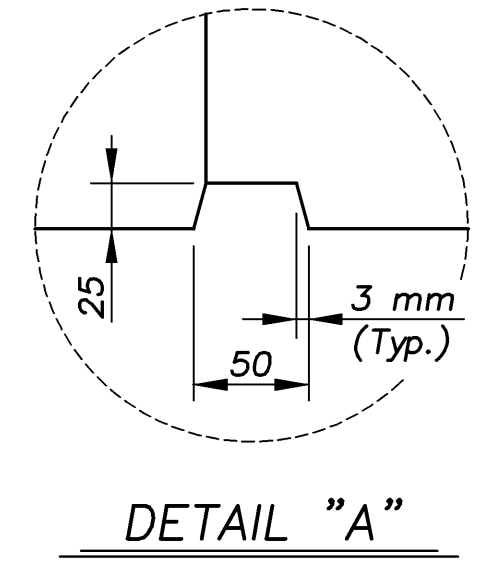


**TYPICAL RETAINING WALL SECTION**  
WALL N2B (PANELS V, W & X)

**CONSTRUCTION METHOD:**  
Construction for the Retaining Walls shall be cast-in-place as detailed in the plans. Precast construction will not be allowed for the retaining walls.

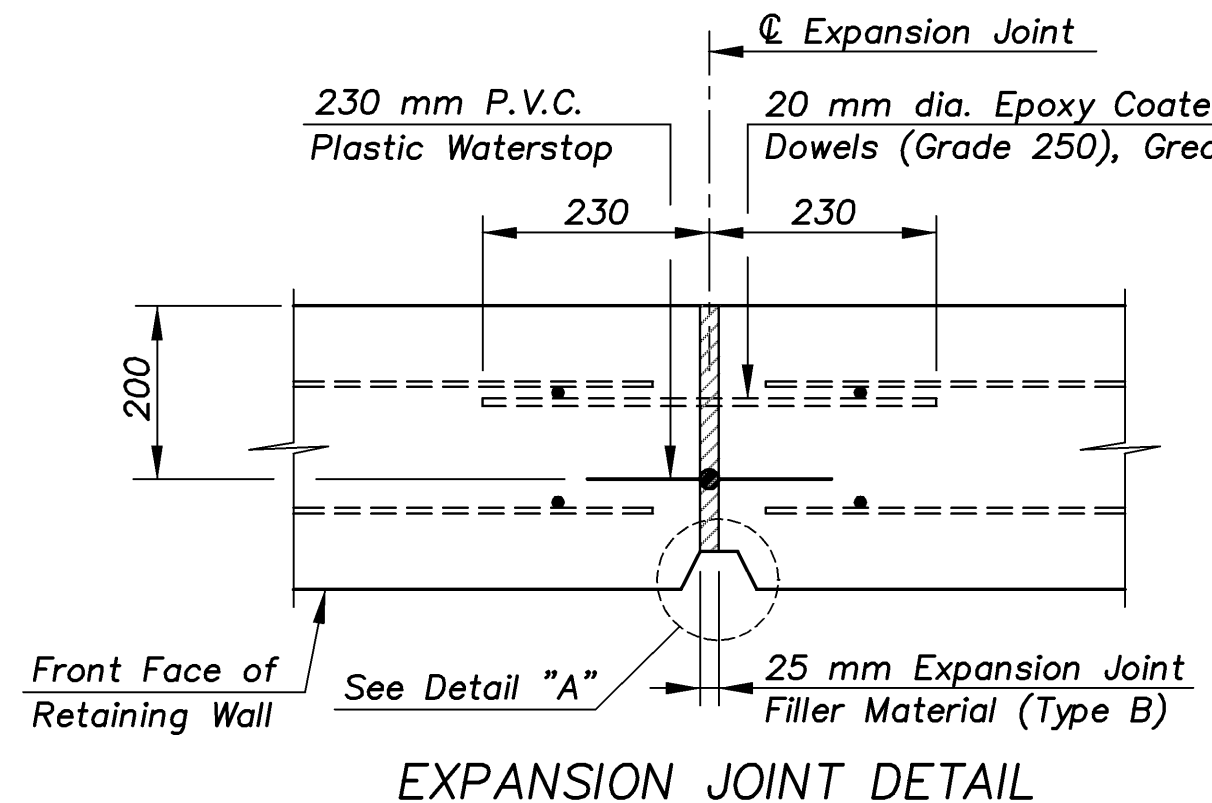


**SECTION A-A**

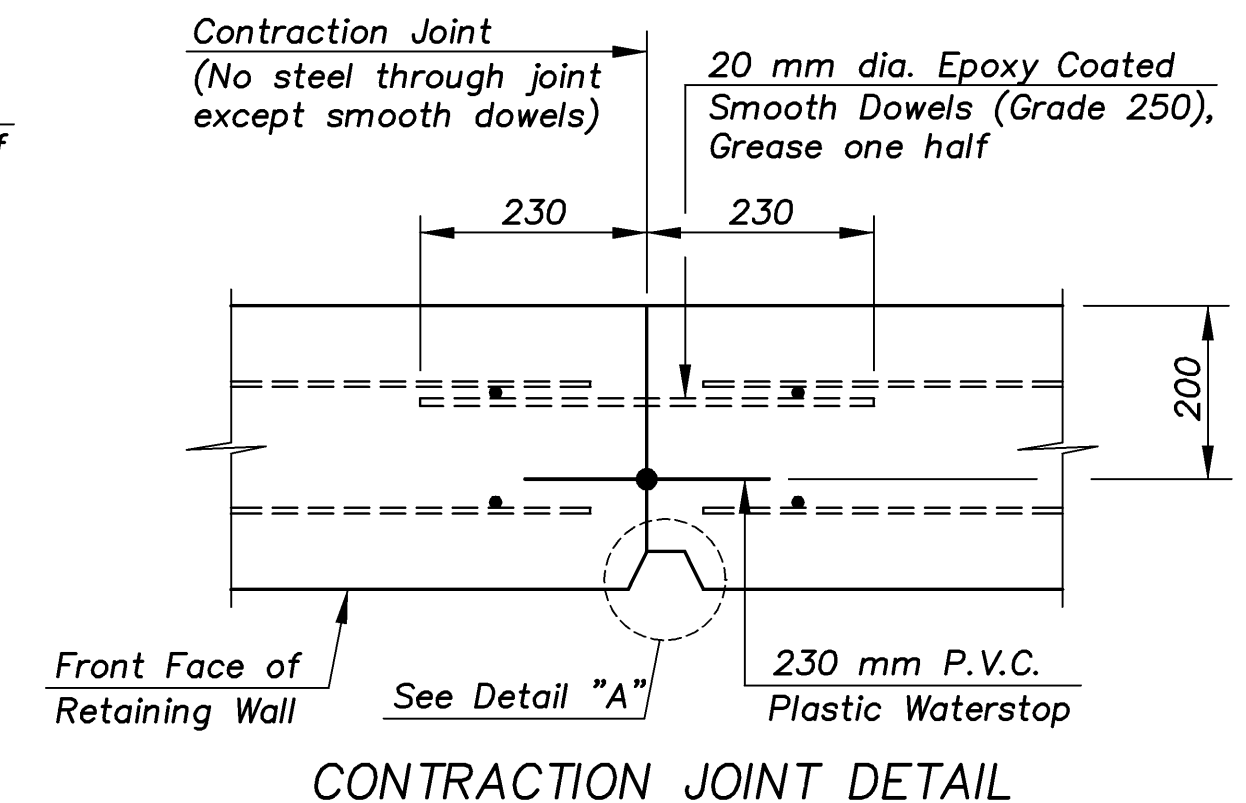


**DETAIL "A"**

**NOTE:** Expansion and Contraction Joints shall extend from top of Barrier to bottom of Wall Panel and shall extend through the Capbeam. A minimum of one day must elapse between placement of wall concrete on adjacent sides of contraction joint.



**EXPANSION JOINT DETAIL**



**CONTRACTION JOINT DETAIL**

1:200 RET WALL/DETAILS

KANSAS DEPARTMENT OF TRANSPORTATION

**CFS**  
Cook, Flatt & Strobel  
ENGINEERS, P. A.

**ROCK ROAD RETAINING WALLS**  
TYPICAL SECTIONS

DESIGNED R.S.C. SCALE Noted  
DATE T.R.G.  
QUANTITIES T.R.G. SHEET 16 OF 27

Proj. No. 54-87 K-8258-01 SEDGWICK COUNTY