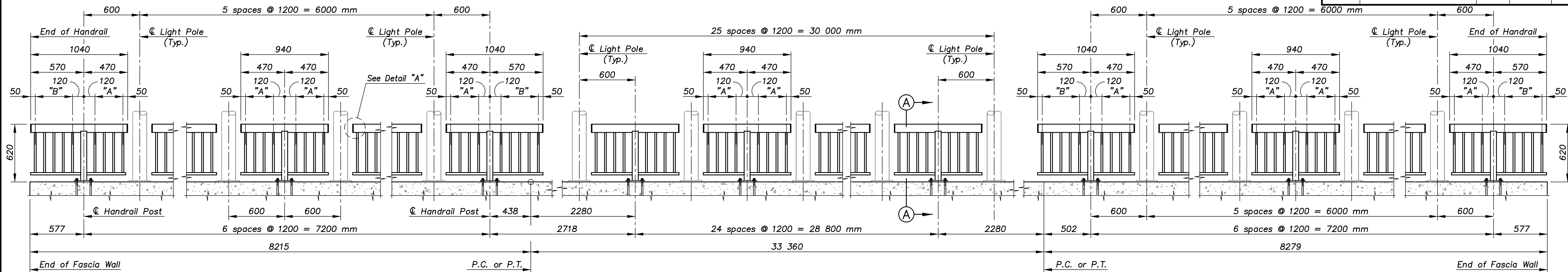


"A" = 3 spaces @ 100 mm
 "B" = 4 spaces @ 100 mm

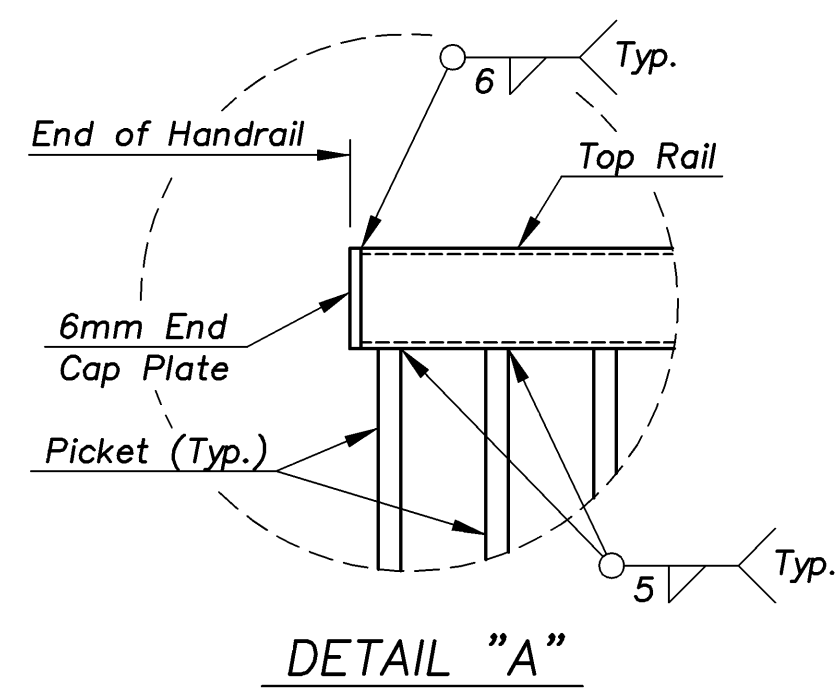
NOTE: All horizontal dimensions are measured along centerline of Handrail.

E.F. INDICATES EACH FACE.
 N.F. INDICATES NEAR FACE.
 F.F. INDICATES FAR FACE.

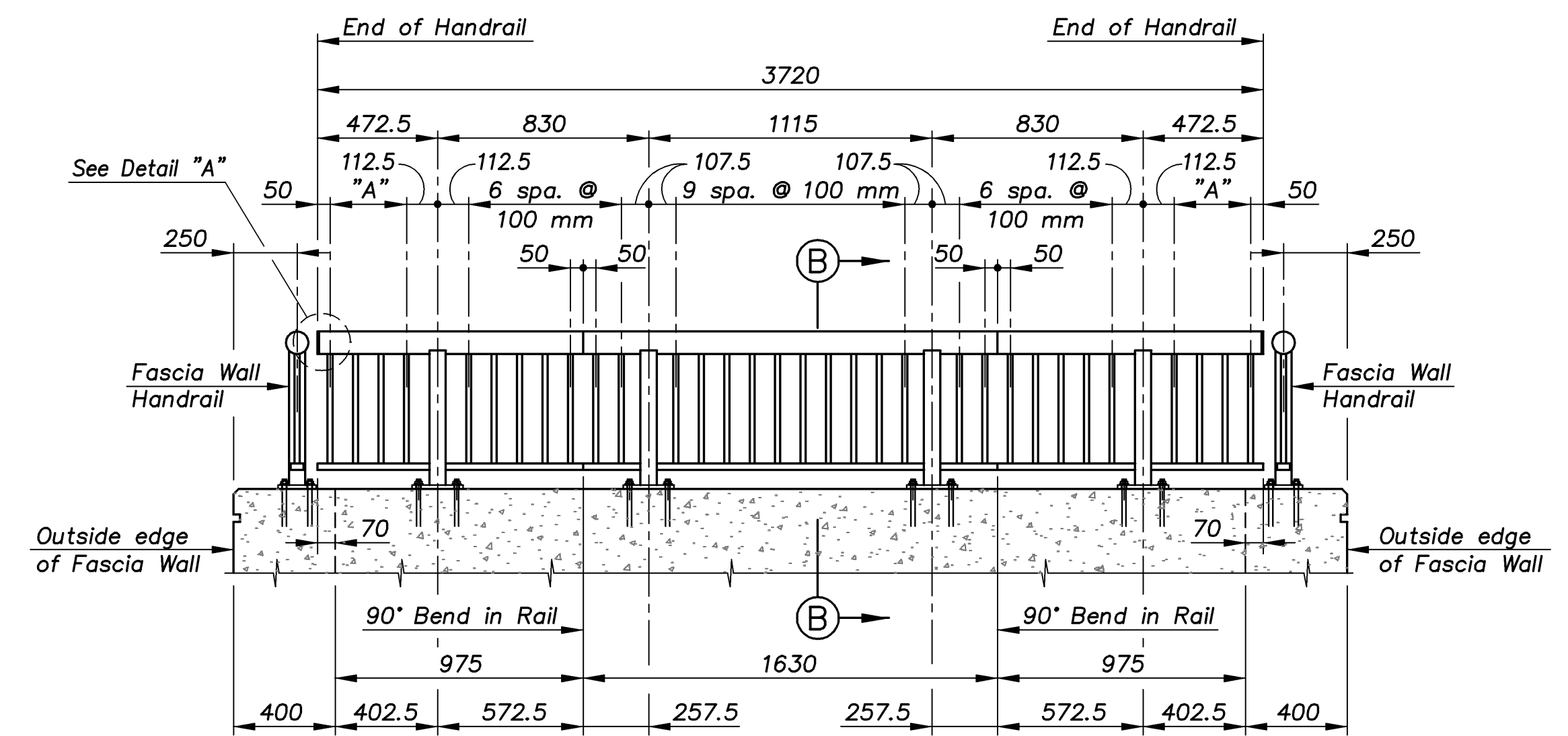
STATE	PROJECT NO.	YEAR	SHEET NO.	TOTAL SHEETS
KANSAS	54-87 K-8258-01	2007	280	556



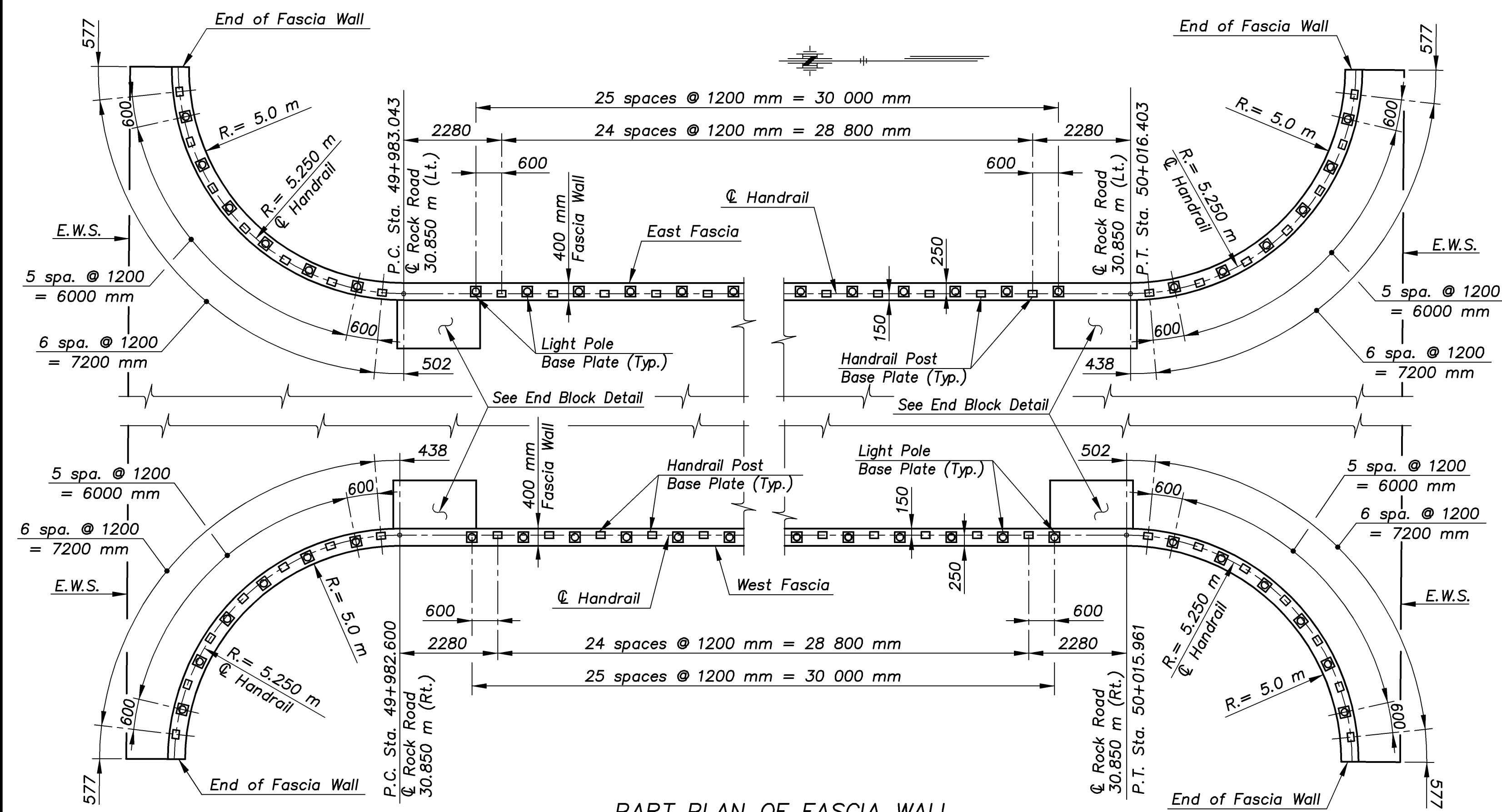
DEVELOPED TYPICAL ELEVATION OF FASCIA WALL HANDRAIL



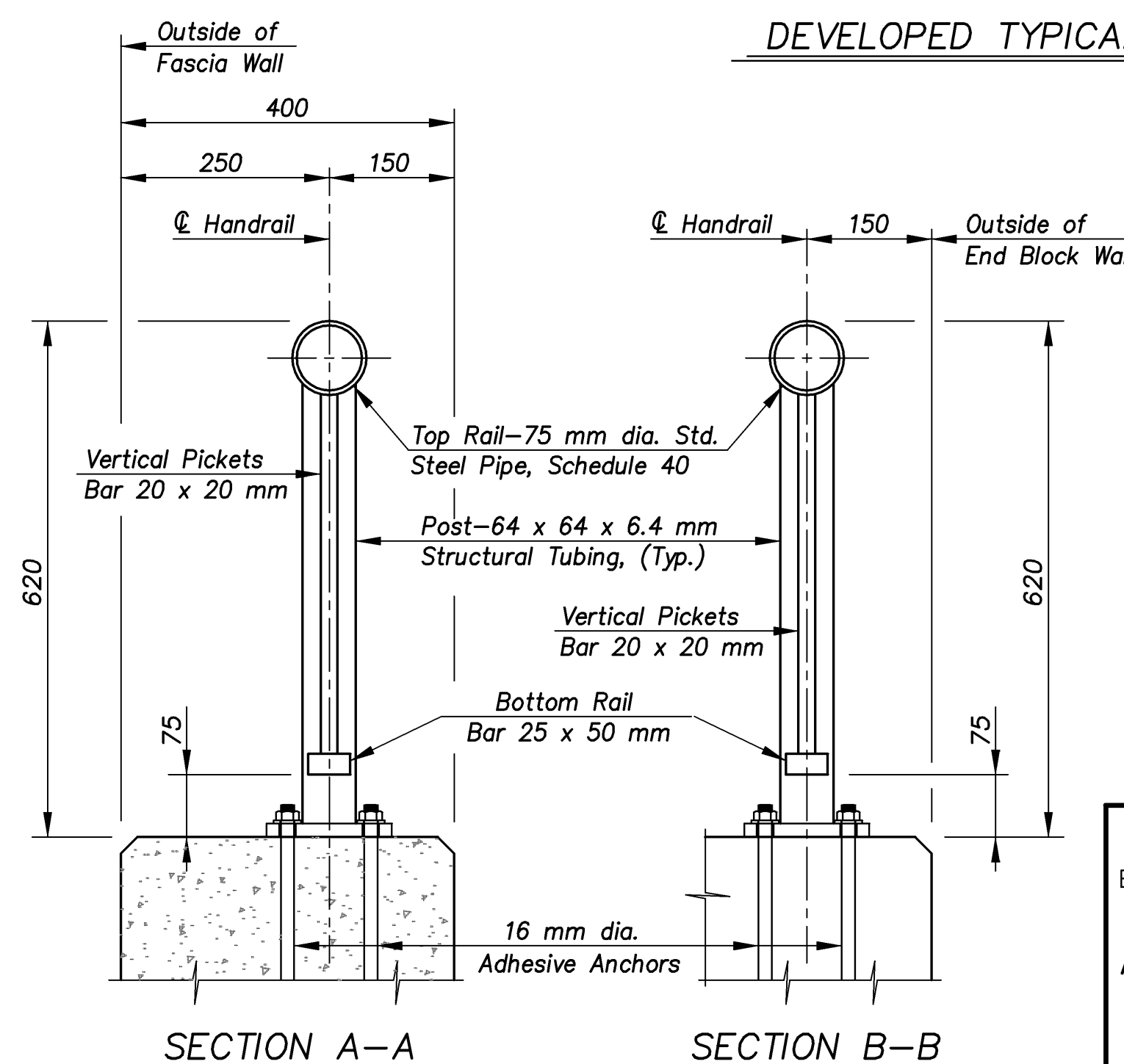
HANDRAIL PAY LENGTH:
 8 Sections @ 1040 mm = 8320 mm
 70 Sections @ 940 mm = 65800 mm
 4 Sections @ 3720 mm = 14880 mm
 Total = 89000 mm



DEVELOPED TYPICAL ELEVATION OF END BLOCK HANDRAIL

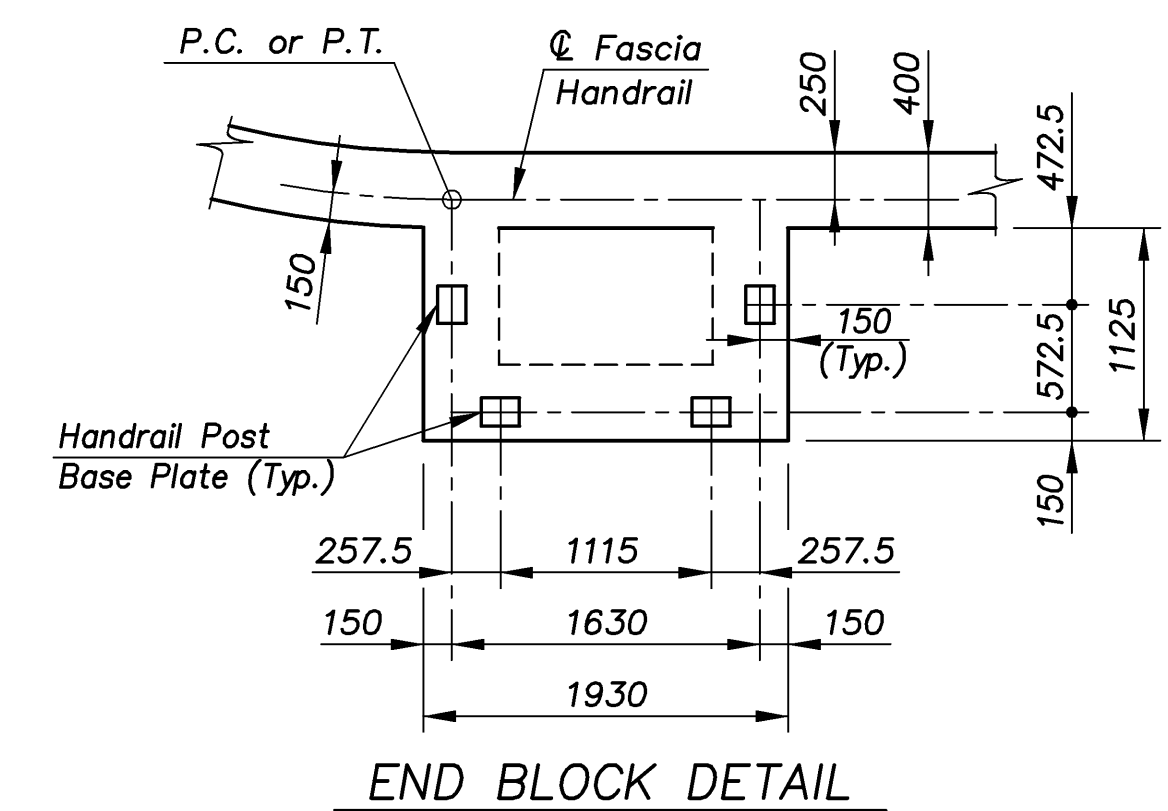


PART PLAN OF FASCIA WALL



SECTION A-A

SECTION B-B



END BLOCK DETAIL

ROCK/ALTERNATE 1:20

KANSAS DEPARTMENT OF TRANSPORTATION
 BR. NO. 54-87-31.12(702) STA. 3+877.518
 ALTERNATE BRIDGE HANDRAIL DETAILS
 ROCK ROAD OVER KELLOGG AVENUE
 Proj. No. 54-87 K-8258-01 SEDGWICK COUNTY

CFS
 Cook, Flatt & Strobel
 ENGINEERS, P. A.
 DESIGNED R.S.C. SCALE Varies
 DETAILED T.R.G. DATE
 QUANTITIES T.R.G. SHEET 34 OF 41