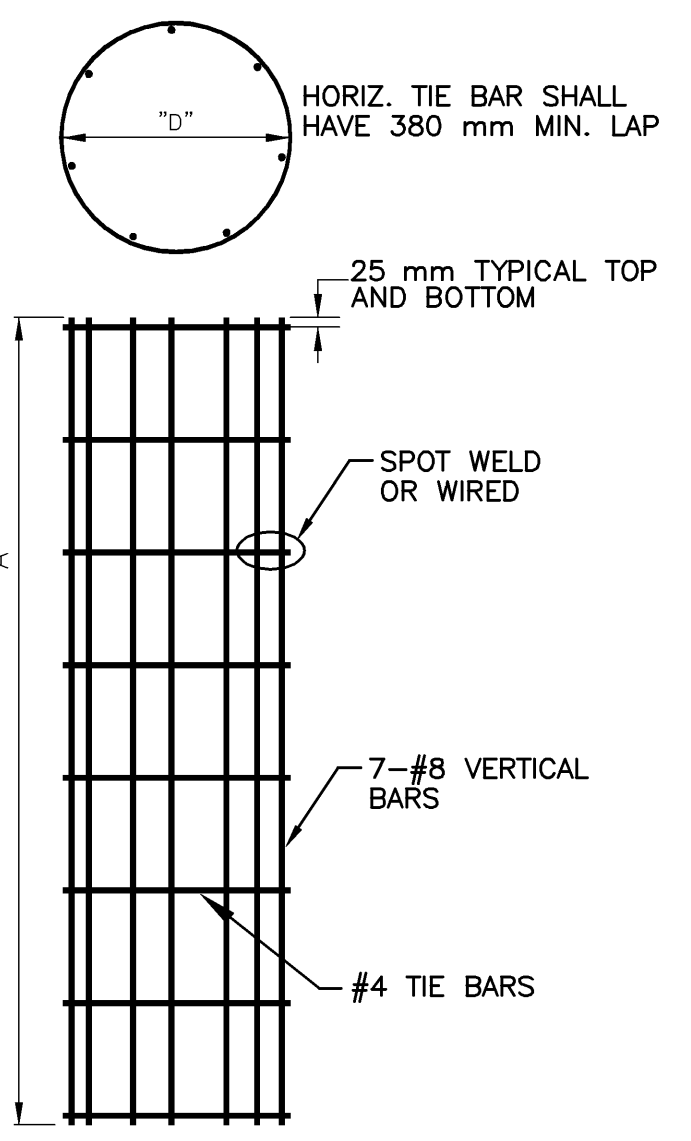


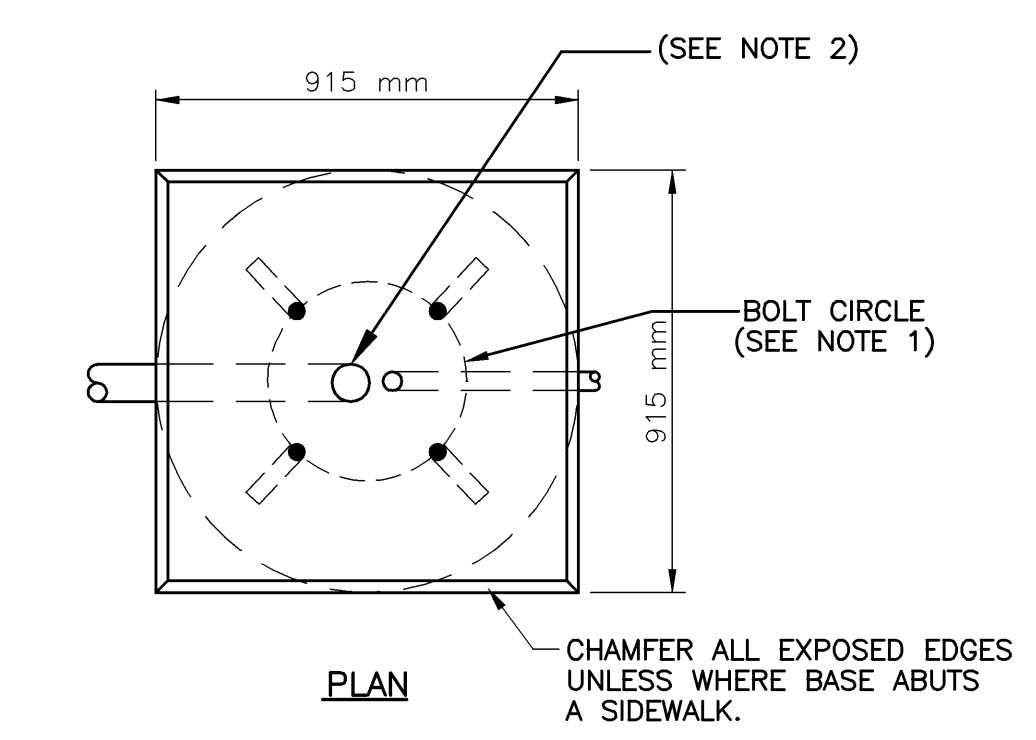
HORIZONTAL REBAR		
POLE FND. DIA. (mm)	REBAR CIR. "D" (mm)	SPACING
610	508	305 mm MAX.
915	762	305 mm MAX. EXCEPT FOR 3 660 mm BASE WHICH SHALL BE 225 mm MAX.

VERTICAL REBAR	
POLE FND. DEPTH (mm)	LENGTH "A" (mm)
762	610
2 440	2 337
3 050	2 947
3 660	3 556

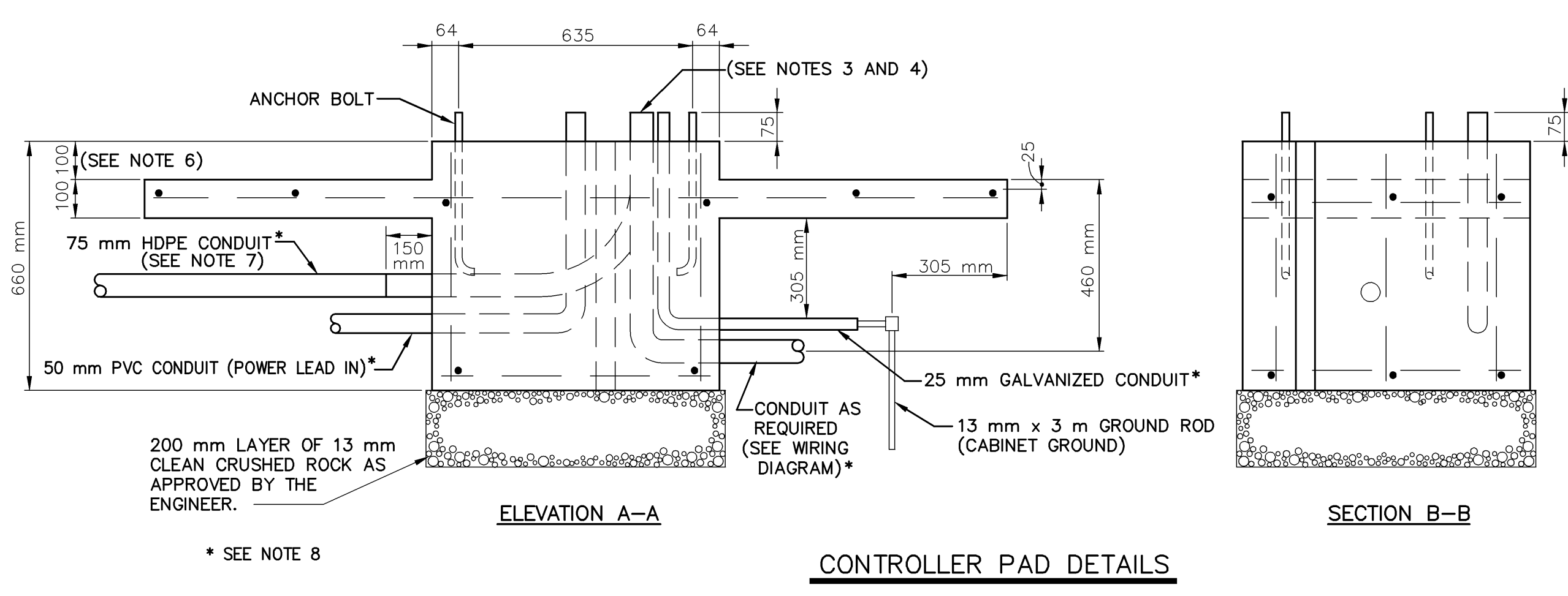
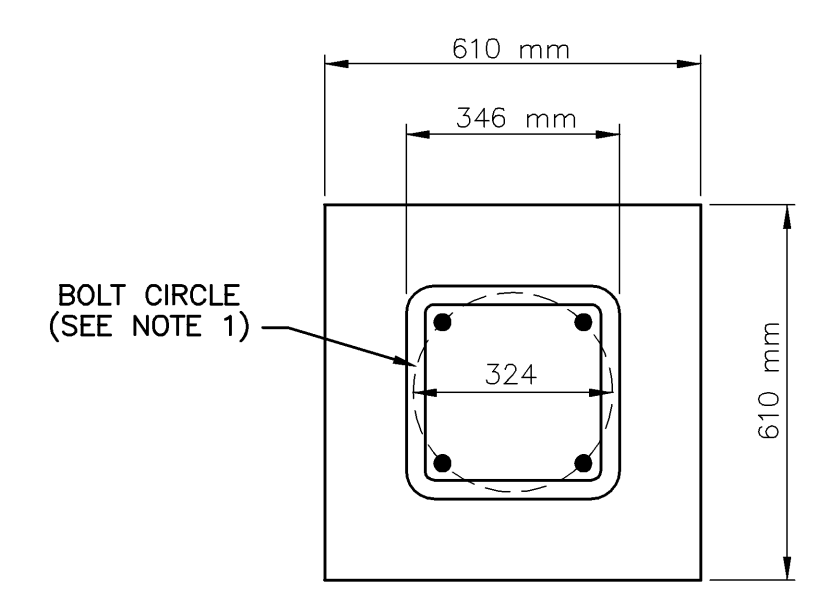


POLE BASE NOTES:

- FINAL POLE, ANCHOR BOLT SIZE, ANCHOR BOLT PROJECTION, AND BOLT CIRCLE SHALL BE AS PER MANUFACTURER'S RECOMMENDED PRACTICES.
- ALL CONDUITS AND ANCHOR BOLTS FOR ALL THE NEW POLE BASES SHALL BE RIGIDLY INSTALLED BEFORE CONCRETE IS PLACED. ANCHOR BOLTS SHALL BE SPACED BY MEANS OF A FACTORY CERTIFIED TEMPLATE OR DRAWING, THE CENTER OF WHICH SHALL COINCIDE WITH THE CENTER OF THE BASE.
- ALL CONCRETE POLE BASES SHALL BE CONSOLIDATED BY AN INTERNAL TYPE VIBRATOR.
- FINAL 150 mm OF CONCRETE FOUNDATION (POLE CAP) SHALL BE FORMED SQUARE FOR THE TRAFFIC SIGNAL POLE. THE CAP SHALL BE FORMED AND POURED AFTER THE MASTARM IS ERECTED AND THE POLE PLUMB.
- ALL CONDUIT ELBOWS SHALL BE CONSIDERED SUBSIDIARY TO THE TRAFFIC SIGNAL POLE BASE.



REBAR CAGE DETAIL



SIGNAL CONTROLLER PAD NOTES:

- ALL CONDUITS AND ANCHOR BOLTS SHALL BE RIGIDLY INSTALLED BEFORE CONCRETE IS PLACED.
- TOP OF PAD TO BE SLOPED TO DRAIN.
- ALL METALLIC CONDUITS ENTERING THE BASE OF THE CABINET SHALL BE EQUIPPED WITH GROUNDING BUSHINGS (SEE CONTROLLER CABINET GROUNDING DETAIL).
- DUCT SEAL SHALL BE APPLIED AT CONDUIT ENTRANCES.
- A WATERTIGHT SEAL SHALL BE APPLIED ALONG THE INSIDE AND OUTSIDE EDGES OF THE CABINET WHERE IT ABUTS TO THE CONCRETE PAD AND AROUND THE SECONDARY SERVICE ENCLOSURE WHERE IT ABUTS TO THE CABINET.
- 100 mm IS NOMINAL DIMENSION. 50 mm x 100 mm FORMS ARE ACCEPTABLE EXCEPT WHERE OTHERWISE NOTED OR DIRECTED (EXPOSED CONCRETE SURFACES SHALL BE FORMED BY OTHER MEANS FOR AN ACCEPTABLE FINISHED APPEARANCE).
- 75 mm SCHEDULE 40 HDPE CONDUIT (ORANGE IN COLOR) WITH A #10 THHN STRANDED COPPER LOCATING CABLE AND POLYPROPYLENE PULL ROPE. CONNECT TO 75 mm PVC IN CONCRETE FOUNDATION WITH APPROVED COUPLING.
- ALL CONDUIT ELBOWS SHALL BE CONSIDERED SUBSIDIARY TO THE TRAFFIC SIGNAL CONTROLLER PAD.

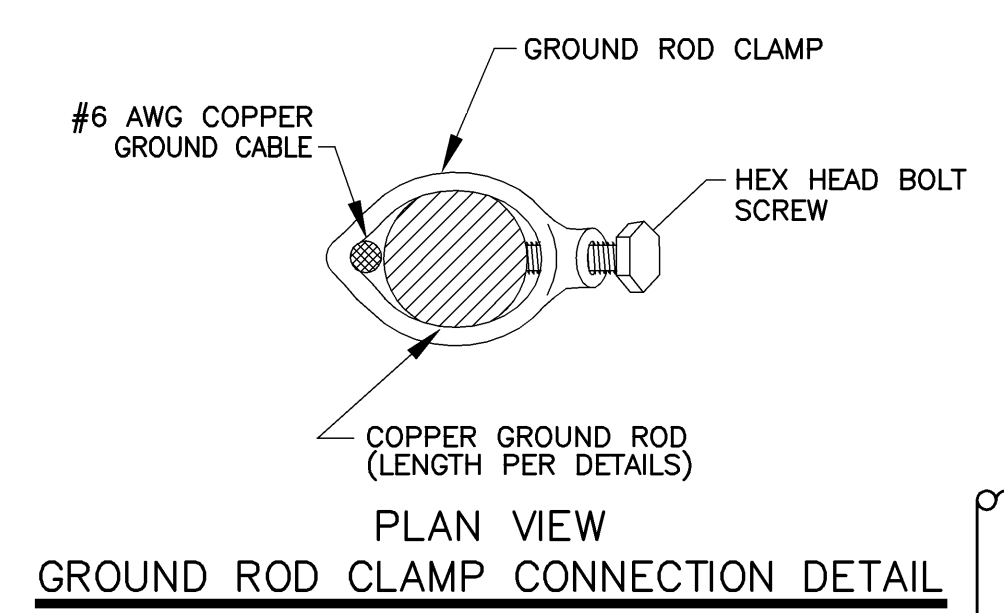
CONTROLLER PAD DETAILS

CONTROLLER CABINET GROUNDING NOTES:

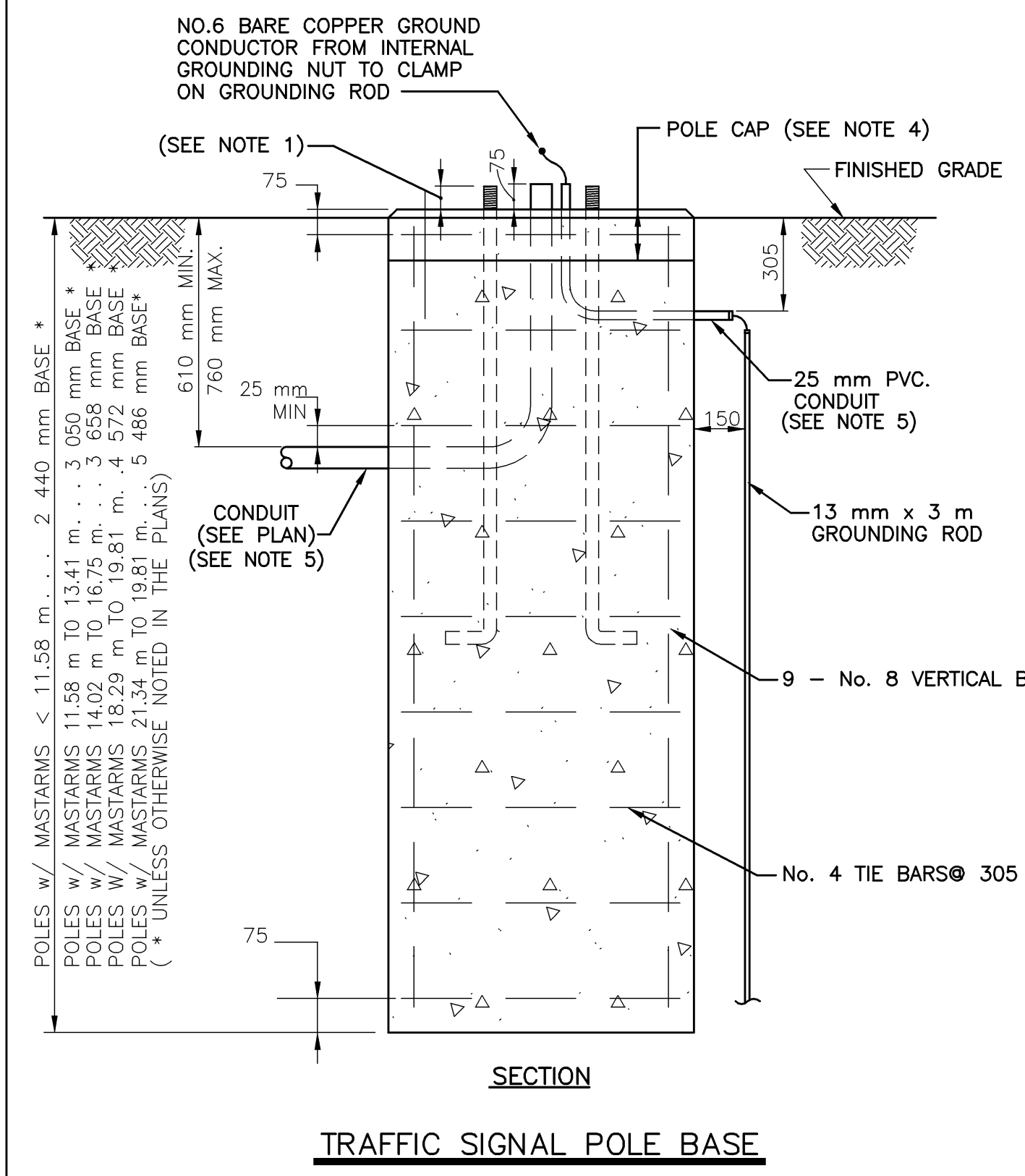
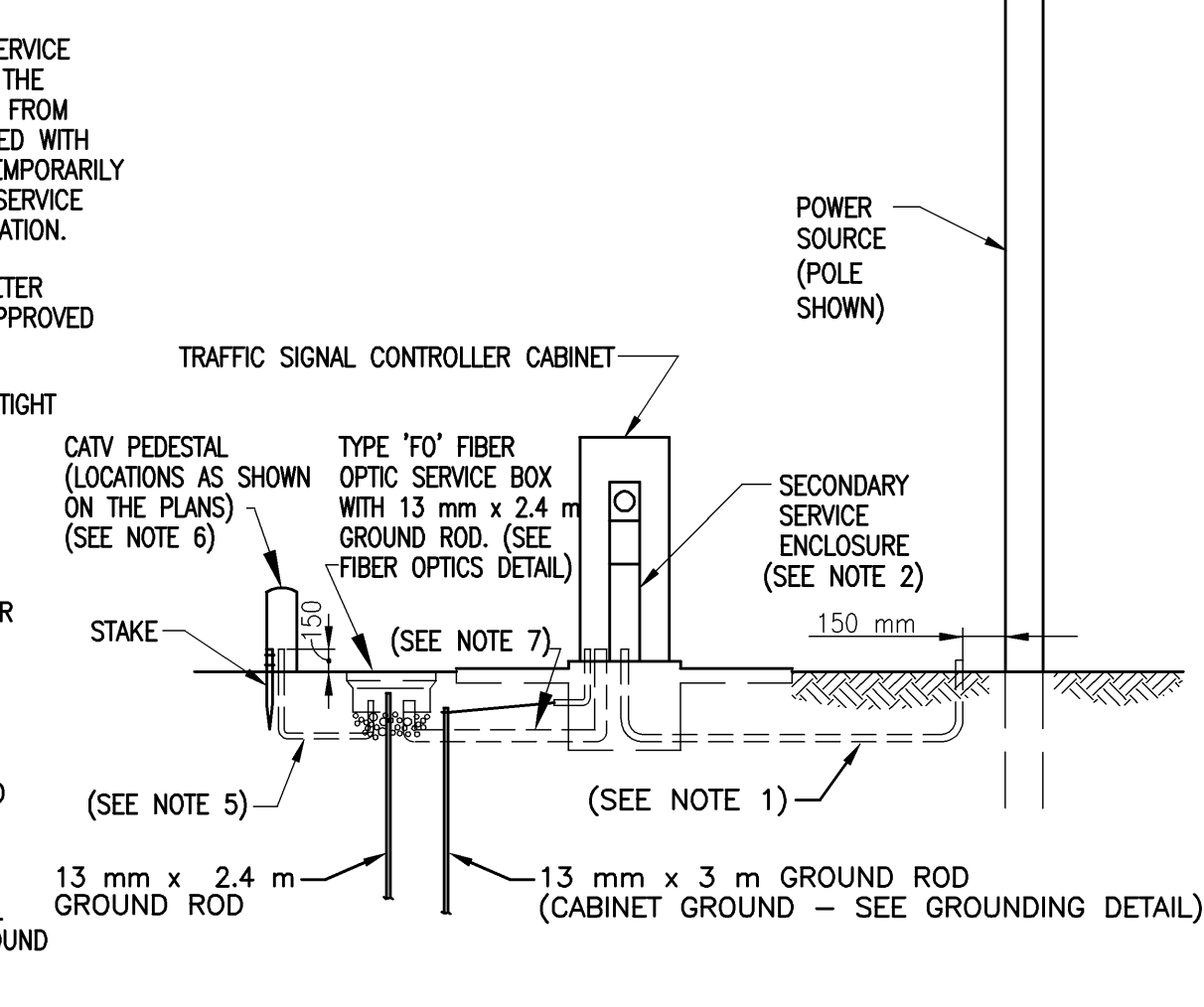
- THE CONTRACTOR SHALL PROVIDE 1c #6 BARE COPPER GROUND WIRES CONTINUOUS FROM THE EO GND/CH GRND (POWER TERMINAL BLOCK), THROUGH THE CONDUIT GROUNDING BUSHINGS, TO THE 13 mm DIA. x 3 m LONG CABINET GROUND ROD AND THE OTHER TO THE BUS BAR IN THE SECONDARY SERVICE ENCLOSURE.
- THE CONTRACTOR SHALL INSTALL THE GROUND WIRES FOR THE SIGNAL CABLES TO THE NEUTRAL AC- BUS (14 POS. BUS BAR).
- THE CONTRACTOR SHALL INSTALL THE GROUND WIRE FROM THE BUS BAR IN THE SECONDARY SERVICE ENCLOSURE TO THE AC- (POWER TERMINAL BLOCK).
- THE CONTRACTOR SHALL INSTALL THE POSITIVE WIRE FROM THE SECONDARY SERVICE ENCLOSURE TO THE AC+ (POWER TERMINAL BLOCK).

SERVICE CONNECTION NOTES:

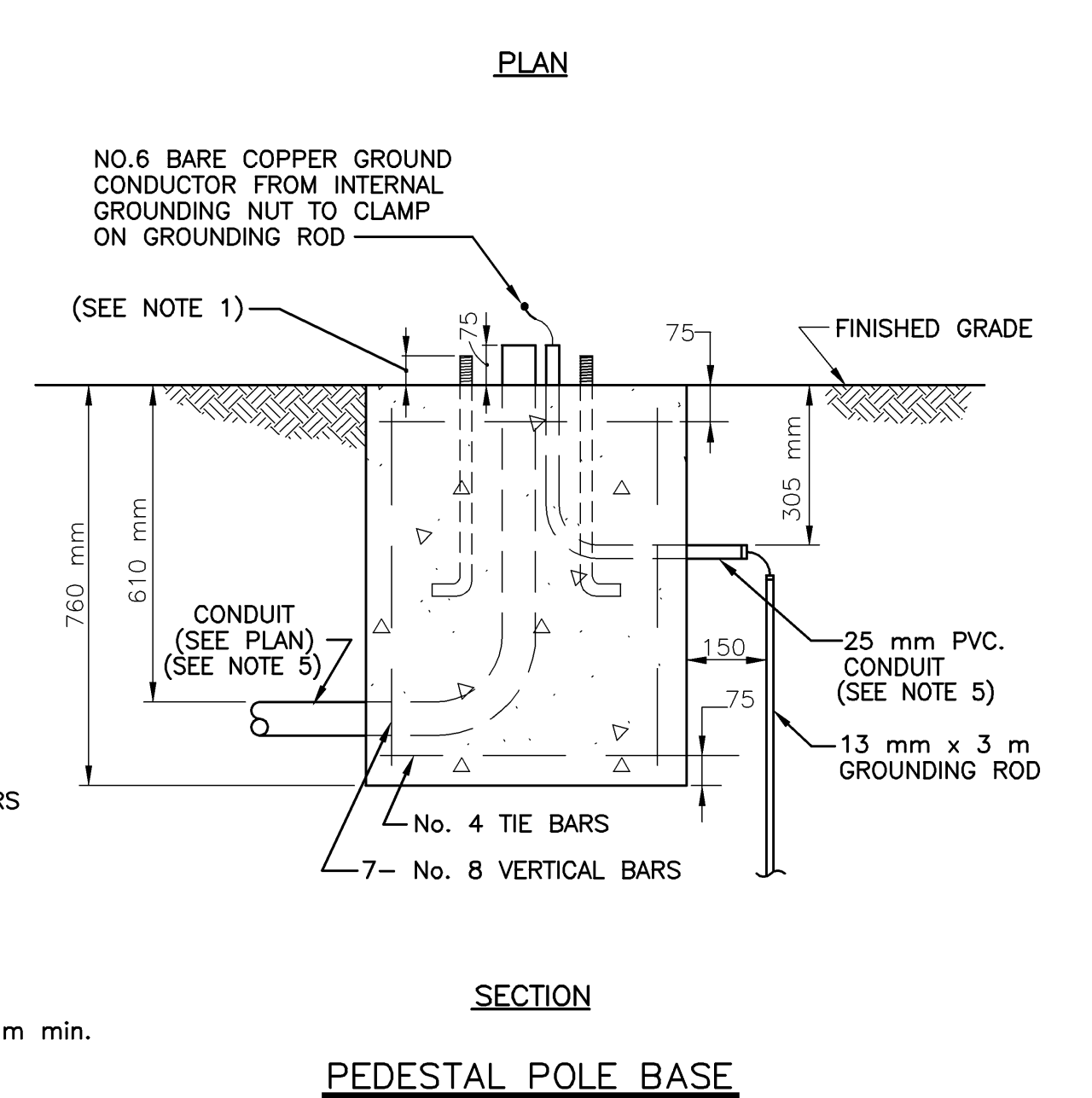
- POWER**
- THE ELECTRICAL UTILITY COMPANY TO INSTALL SECONDARY POWER SERVICE THROUGH CONTRACTOR INSTALLED 2" SCHEDULE 40 PVC CONDUIT, THE 2" PVC CONDUIT SHALL BE INSTALLED 30" DEEP AND TO WITHIN 7" FROM THE BASE OF THE POWER SOURCE. THE CONDUIT SHALL BE EQUIPPED WITH A PULLSTRING. THE END OF THE NEW CONDUIT SWEEP SHALL BE TEMPORARILY EXPOSED UNTIL THE ELECTRICAL UTILITY COMPANY COMPLETES THE SERVICE HOOK-UP. A LIGHTED BARRICADE SHALL BE PLACED AT THE EXCAVATION.
 - ALUMINUM SECONDARY SERVICE ENCLOSURE IS A COMBINATION METER CAN/BREAKER BOX AND SHALL BE A MEYERS MEA-11 VLM-TS OR APPROVED EQUAL.
 - THE CONTRACTOR SHALL INSTALL A MINIMUM 25 mm DIAMETER WATERTIGHT CONDUIT ENTRANCE BETWEEN THE BREAKER BOX PORTION OF THE SECONDARY SERVICE ENCLOSURE AND THE TRAFFIC SIGNAL CONTROLLER CABINET.
 - THE CONTRACTOR SHALL INSTALL 1c #6 USE SECONDARY SERVICE WIRE TO CONNECT THE BREAKER(S) AND TRAFFIC SIGNAL CABINET. (GROUND WIRE TO AC- AT POWER TERMINAL BLOCK IN CONTROLLER CABINET).
- CATV**
- THE CONTRACTOR SHALL INSTALL A 25 mm PVC CONDUIT FOR CATV ENTRANCE AS SHOWN BETWEEN THE CATV PEDESTAL AND THE TYPE 'FO' FIBER OPTIC SERVICE BOX. A PULL STRING SHALL BE LEFT AND SECURED IN THIS CONDUIT.
 - CITY TO PROVIDE CATV PEDESTAL FOR CONTRACTOR PICK-UP AND INSTALLATION. THE TOP 150 mm OF A 610 mm LONG STAKE SHALL BE BOLTED TO THE PEDESTAL AND THE STAKE DRIVEN INTO THE GROUND FOR THE INSTALLATION OF THE PEDESTAL.
 - THE CONTRACTOR SHALL INSTALL A 75 mm SCHEDULE 40 HDPE CONDUIT (ORANGE IN COLOR) BETWEEN THE TYPE 'FO' FIBER OPTIC SERVICE BOX AND THE TRAFFIC SIGNAL CONTROLLER CABINET. A FACTORY INSTALLED POLYPROPYLENE PULL ROPE AND #10 THHN STRANDED COPPER LOCATING CABLE SHALL BE LEFT AND SECURED IN THIS CONDUIT.



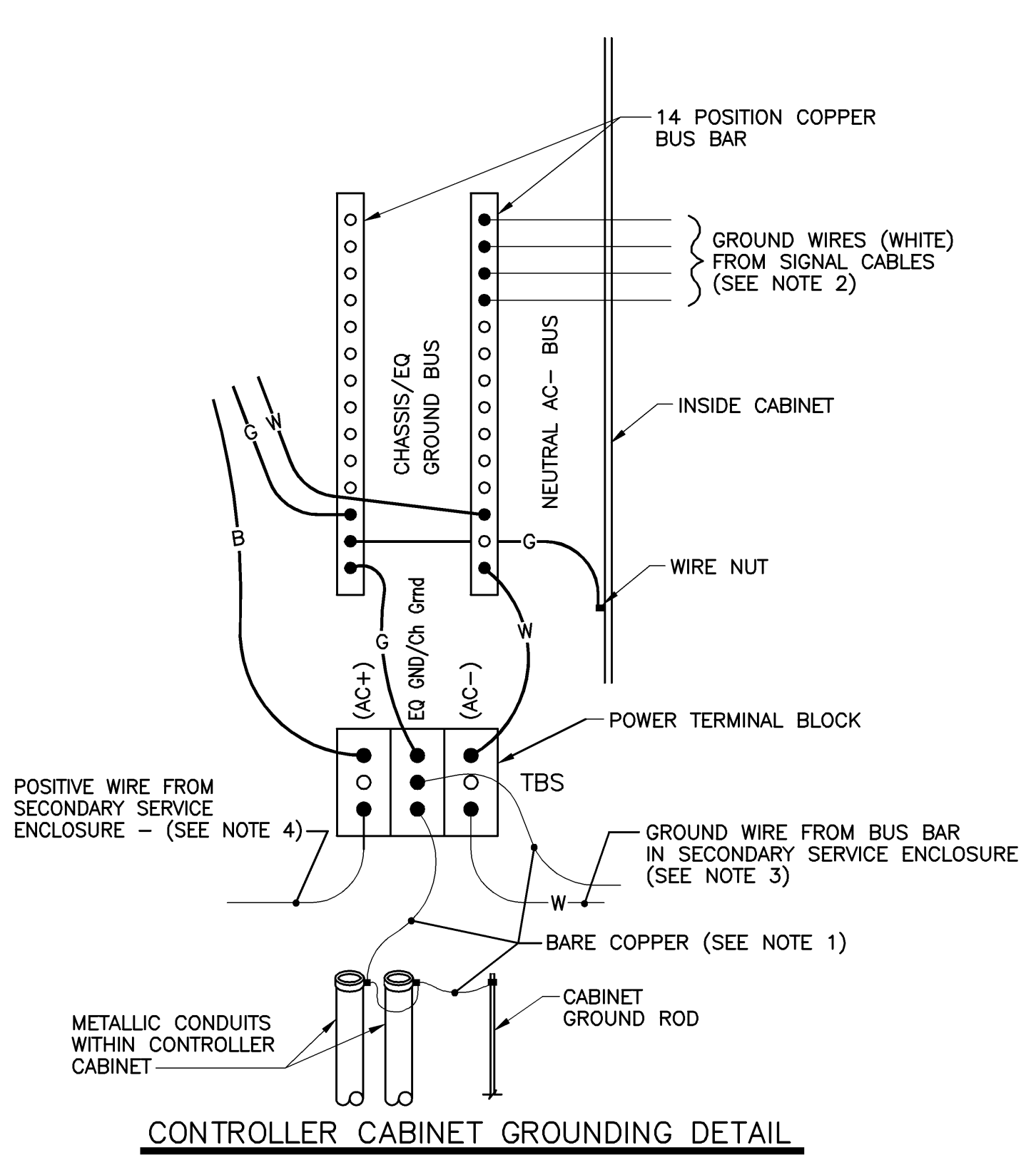
SERVICE CONNECTION DETAILS



TRAFFIC SIGNAL POLE BASE



PEDESTAL POLE BASE



CONTROLLER CABINET GROUNDING DETAIL

CFS Cook, Flatt & Strobel
ENGINEERS, P.A.

KANSAS DEPARTMENT OF TRANSPORTATION
TRAFFIC SIGNAL INSTALLATION
KELLOGG
TRAFFIC SIGNAL DETAILS (1)

DATE
BY
REFERENCE NOTED
CHECKED

SCALE
Plotter:
Drawn by:
File: