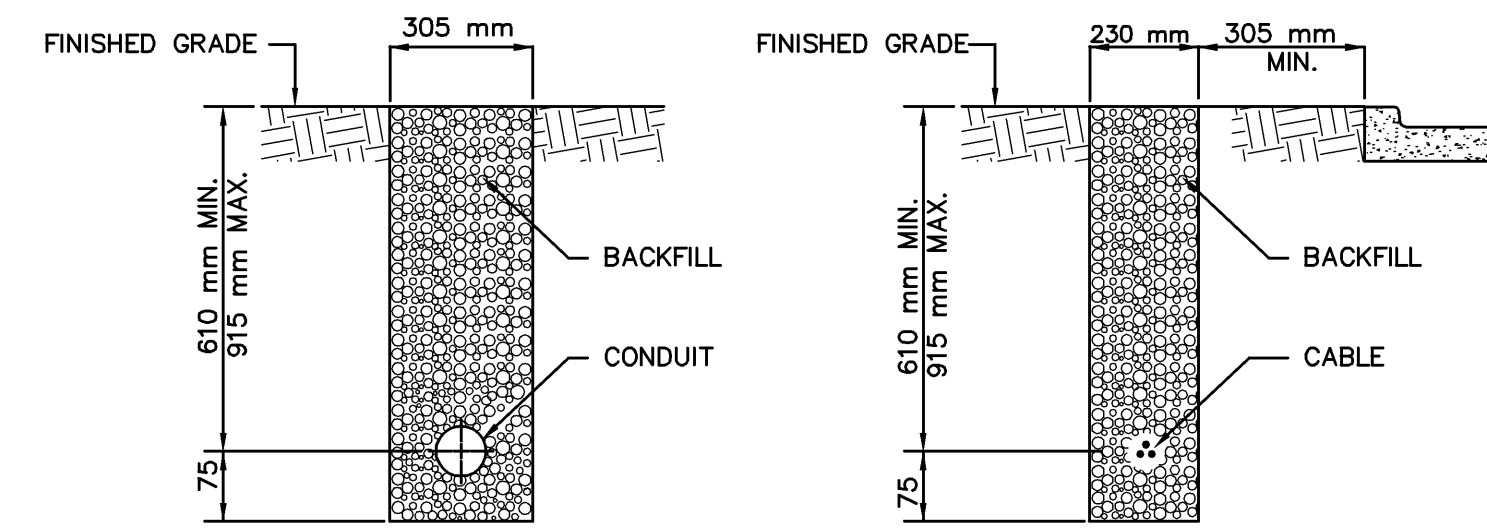


CONDUIT SHALL BE PLACED 610mm TO 915mm BELOW THE TOP OF CURB ELEVATION AND SHALL EXTEND BETWEEN SIGNAL APPURTENANCES AS INDICATED IN THE PLANS. CONDUIT SHALL BE INSTALLED TO DRAIN, AND ALL ENDS SHALL BE THREADED AND CAPPED IF NOT BEING USED. AN ALUMINUM MARKER SHALL BE PLACED IN THE TOP OF THE CURB DIRECTLY OVER THE CONDUIT. ALUMINUM MARKERS WILL BE FURNISHED BY THE CITY OF WICHITA.

THE CONTRACTOR SHALL NOTIFY THE CITY OF WICHITA, DEPARTMENT OF PUBLIC WORKS, TRAFFIC SERVICES MAINTENANCE DIVISION, FOR INSPECTION OF THE CONDUIT INSTALLATION BY THE CITY INSPECTOR. AT LEAST 24 HOURS NOTICE SHALL BE PROVIDED. THE CONDUIT SHALL NOT BE COVERED SO AS TO ENSURE PROPER DEPTH, CORRECT CONDUIT MATERIAL, AND PROPER CONDUIT END TREATMENT AS DESCRIBED ABOVE.



NOTE: BACKFILL IN UNPAVED AREAS SHALL BE FREE OF RUBBLE AND ROCK. CONDUITS SHALL BE PITCHED TO DRAIN.

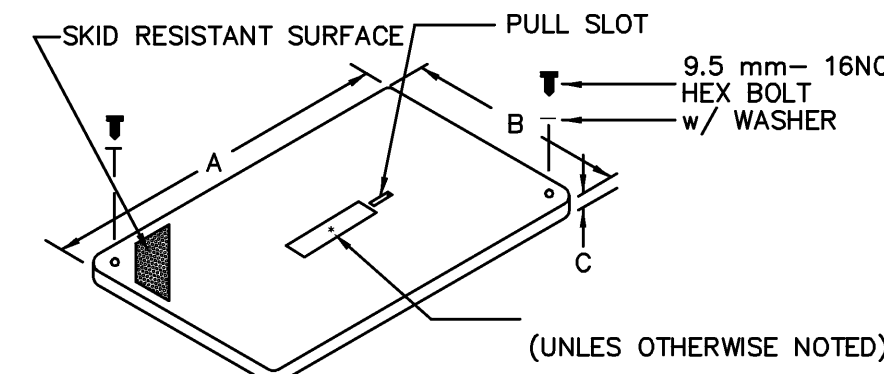
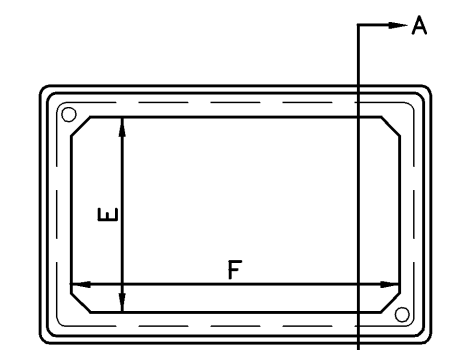
TRENCHING IN UNPAVED AREAS

NOTES

- ANY PERSON WHO MAKES ANY EXCAVATION IN, ON, UNDER, OR THROUGH ANY PUBLIC RIGHT-OF-WAY WITH OR WITHOUT A PERMIT IS OBLIGATED TO CLOSE SUCH EXCAVATION WITHIN FIFTEEN DAYS OF COMMENCEMENT THEREOF, SO AS TO RESTORE THE SURFACE PERMANENTLY TO CONFORM TO SPECIFICATIONS AND TO REPAIR ANY SINKING OR DAMAGE TO THE SURFACE OF IMPROVEMENTS THEREON RESULTING FROM SUCH EXCAVATION WITHIN ONE YEAR THEREAFTER.
- THE MANUAL OF UNIFORM TRAFFIC CONTROL DEVICES, THE WICHITA TRAFFIC CONTROL HANDBOOK FOR STREET MAINTENANCE AND CONSTRUCTION OPERATIONS, AND THE STANDARD SPECIFICATIONS FOR STATE ROAD AND BRIDGE CONSTRUCTION, KANSAS DEPARTMENT OF TRANSPORTATION, MOST CURRENT EDITION, AND SPECIAL PROVISIONS ARE INCORPORATED EXCEPT AS OTHERWISE NOTED.
- ANY EXCAVATION LEFT OPEN OVERNIGHT IN ANY ROADWAY SHALL BE SECURELY PLATED. PLATES SHALL BE PROPERLY ANCHORED AND ALL EDGES OF THE PLATE SHALL BE RAMPED WITH ASPHALT SURFACE MIX TO PREVENT RATTLING.
- THE PAVEMENT REMOVED SHALL BE REPLACED WITH HIGH EARLY STRENGTH CLASS A (AE) CONCRETE HAVING A MINIMUM COMPRESSIVE STRENGTH OF 20.684 k Pa AT TWENTY-EIGHT DAYS.
- ALL CONCRETE USED IN THIS WORK SHALL MEET THE REQUIREMENTS OF THE WICHITA MUNICIPAL CODE. ALL CRUSHED STONE USED AS AGGREGATE FOR CONCRETE IN THIS WORK SHALL BE ENTIRELY GRANITE, CALCITE CEMENTED SANDSTONE, QUARTZITE, BASALT, DIORITE, RHYOLITE, OR TRAP ROCK. THE CONTRACTOR SHALL, AT THE CONTRACTORS EXPENSE, SUBMIT AND RECEIVE APPROVAL OF A CONCRETE MIX DESIGN BY THE CITY ENGINEER PRIOR TO PLACEMENT OF ANY CONCRETE. THE MIX DESIGN SHALL INCLUDE CERTIFIED TEST RESULTS BY AN INDEPENDANT LABORATORY FOR THE AGGREGATE TEST REQUIRED BY THE WICHITA MUNICIPAL CODE.
- NARROW TRENCH TO BE USED ONLY WITH THE APPROVAL OF THE CITY ENGINEER.

TRENCHING DETAIL

**STREET TRENCHING
NOT TO SCALE**



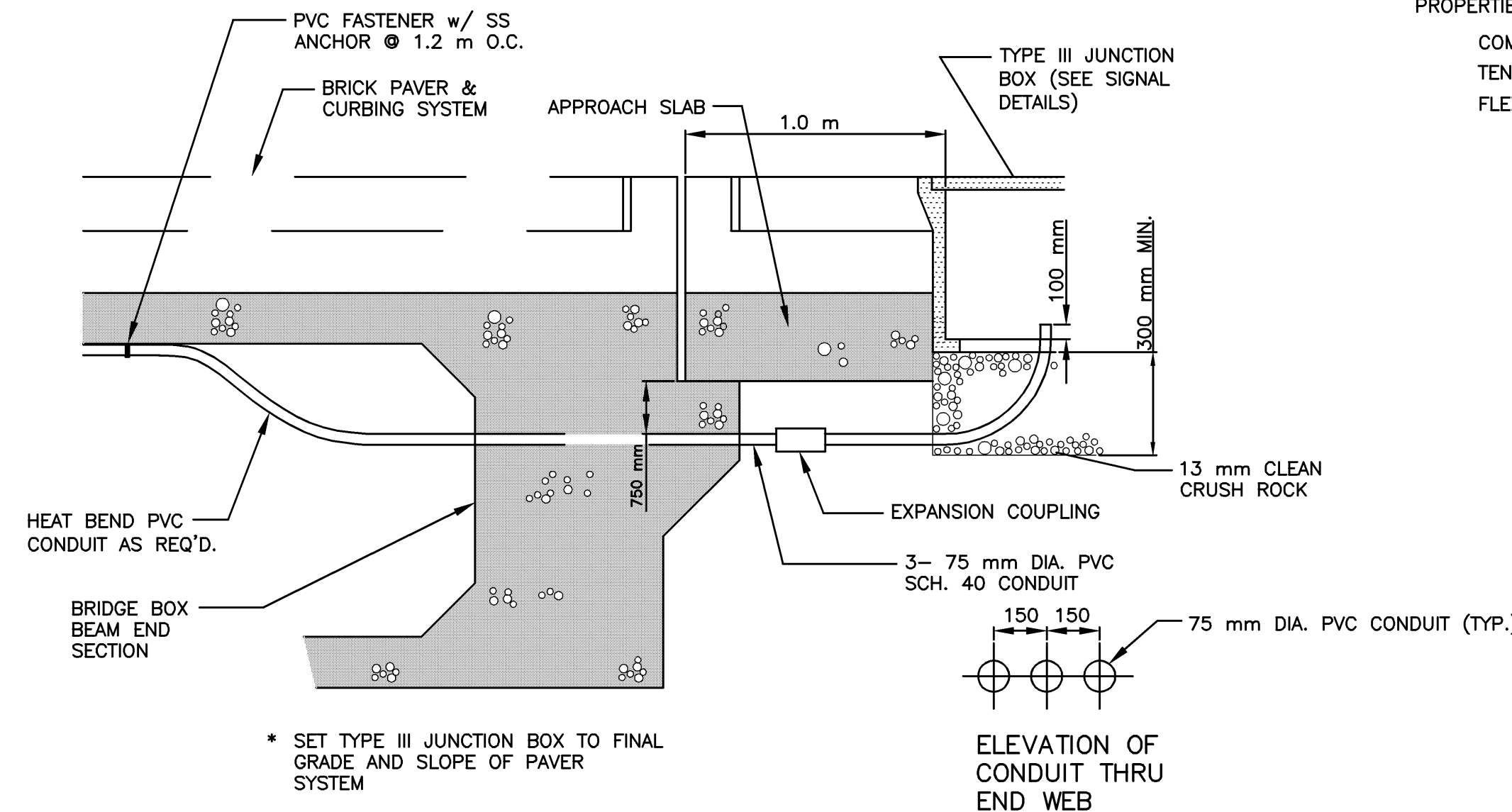
LOGO TO BE "TRAFFIC SIGNAL"

NOTES

- BOXES SHALL BE STACKABLE FOR EXTRA DEPTH.
- BOXES AND COVERS SHALL BE RATED FOR NO LESS THAN 2268 KILOGRAMS OVER A 254 mm x 254 mm AREA.

| TYPE | DIMENSION (mm) | | | | | |
|------|----------------|-----------|----|-----|-----------|-----------|
| | A | B | C | D | E | F |
| I | 327 | 327 | 19 | 324 | 248 - 267 | 248 - 267 |
| II | 457 - 470 | 286 - 292 | 50 | 305 | 241 - 260 | 419 - 438 |
| III | 641 | 362 | 50 | 305 | 330 | 610 |

**FIBERGLASS REINFORCED POLYMER CONCRETE JUNCTION BOX DETAILS
NOT TO SCALE**



* SET TYPE III JUNCTION BOX TO FINAL GRADE AND SLOPE OF PAVER SYSTEM

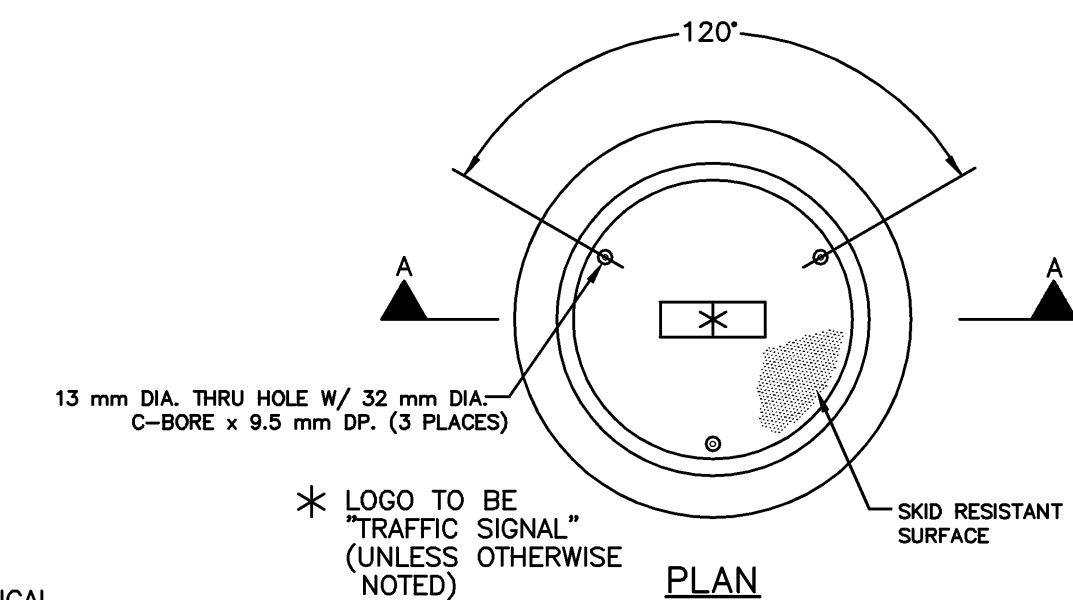
**CONDUIT RUN DETAIL AT BRIDGE END
NTS**

NOTES

- SERVICE BOX MATERIAL TO BE AN AGGREGATE CONSISTING OF SAND AND GRAVEL BOUND TOGETHER WITH A POLYMER AND REINFORCED WITH CONTINUOUS WOVEN GLASS STRANDS. THE MATERIAL MUST HAVE THE FOLLOWING MECHANICAL PROPERTIES.

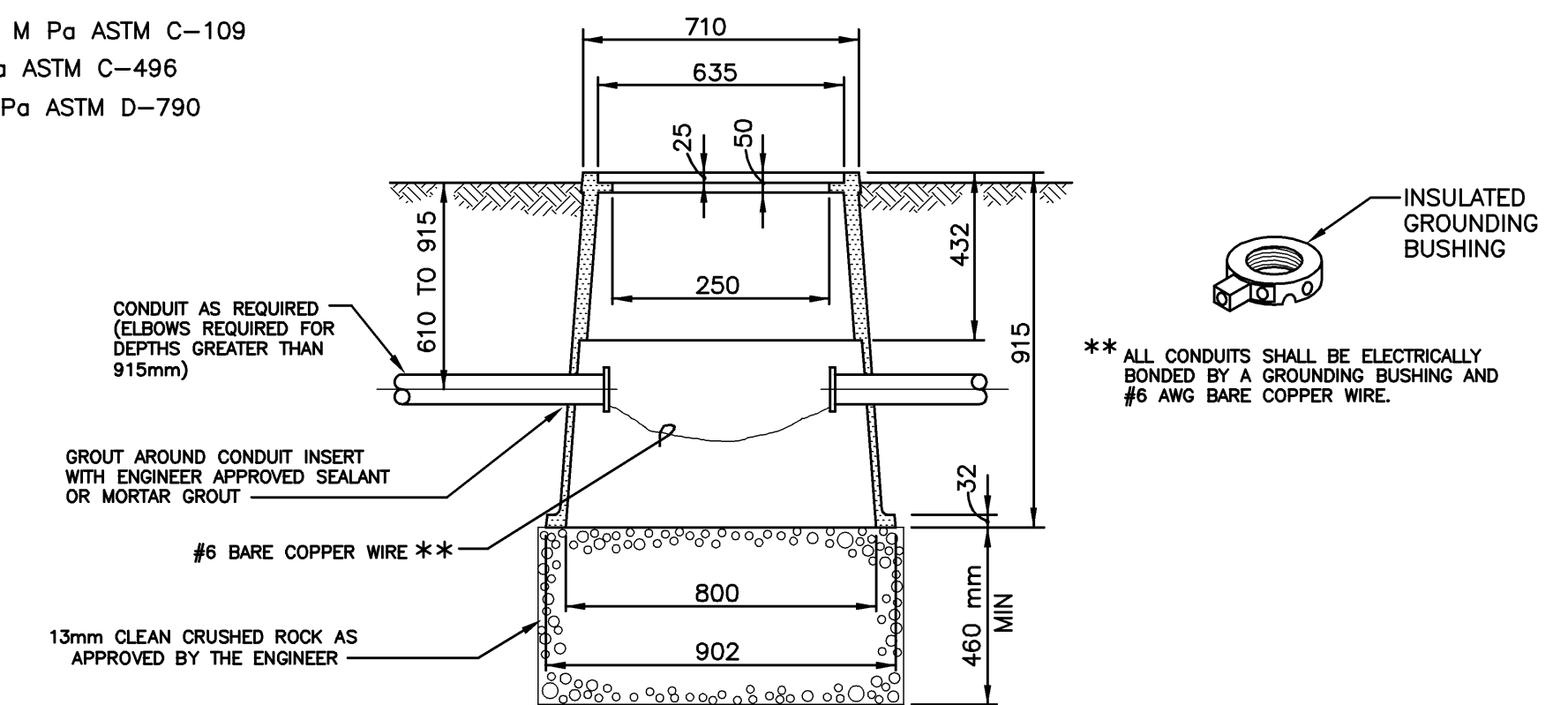
COMPRESSIVE STRENGTH - 75.8 M Pa ASTM C-109
TENSILE STRENGTH - 11.7 M Pa ASTM C-496
FLEXURAL STRENGTH - 51.7 M Pa ASTM D-790

CONDUIT MARKING DETAIL



* LOGO TO BE "TRAFFIC SIGNAL" (UNLESS OTHERWISE NOTED)

PLAN



FIBERGLASS REINFORCED POLYMER CONCRETE SERVICE BOX

** ALL CONDUITS SHALL BE ELECTRICALLY BONDED BY A GROUNDING BUSHING AND #6 AWG BARE COPPER WIRE.