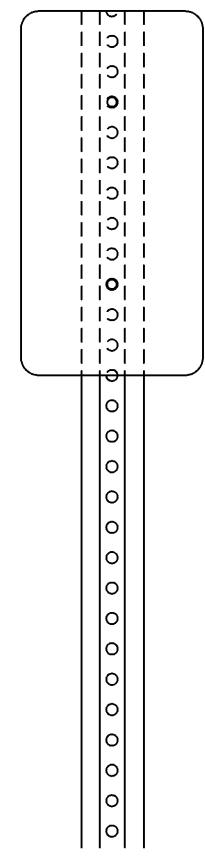
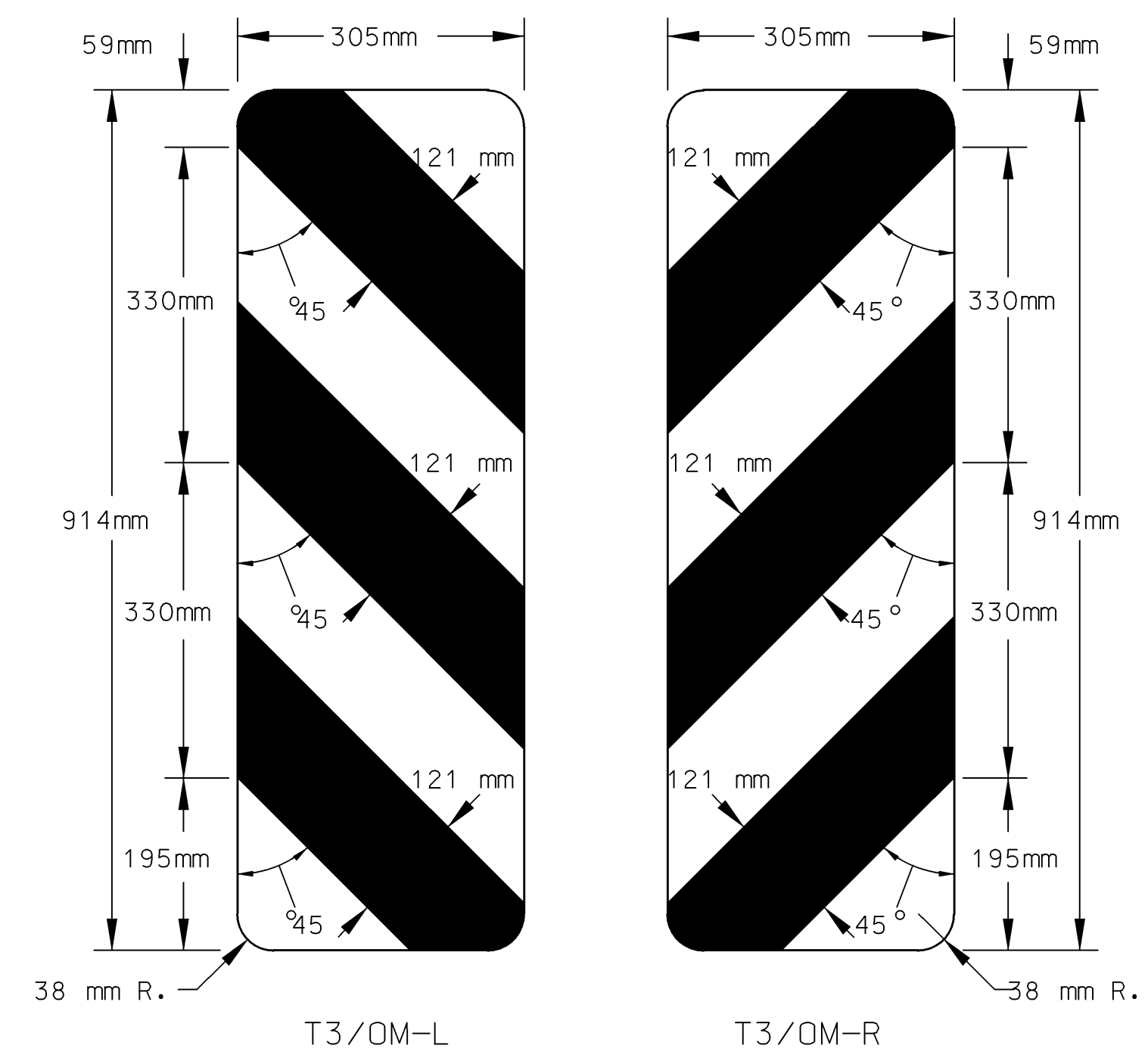


STATE	PROJECT NO.	YEAR	SHEET NO.	TOTAL SHEETS
KANSAS	54-87 K-8258-01	2007	387	556



TYPE 2 OBJECT MARKER

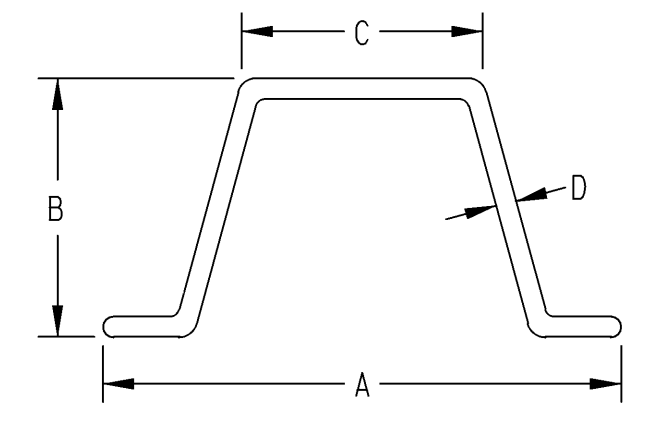
FLAT SHEET OBJECT MARKERS:
 See flat sheet sign blank detail sheets for the aluminum alloys and thickness.
 The 150mm x 300mm object marker sign faces shall be covered with high performance yellow retroreflective sheeting.



T3/OM-L T3/OM-R

COLORS:
 □ YELLOW (RETROREFLECTIVE)
 ■ BLACK (NON-REFLECTIVE)

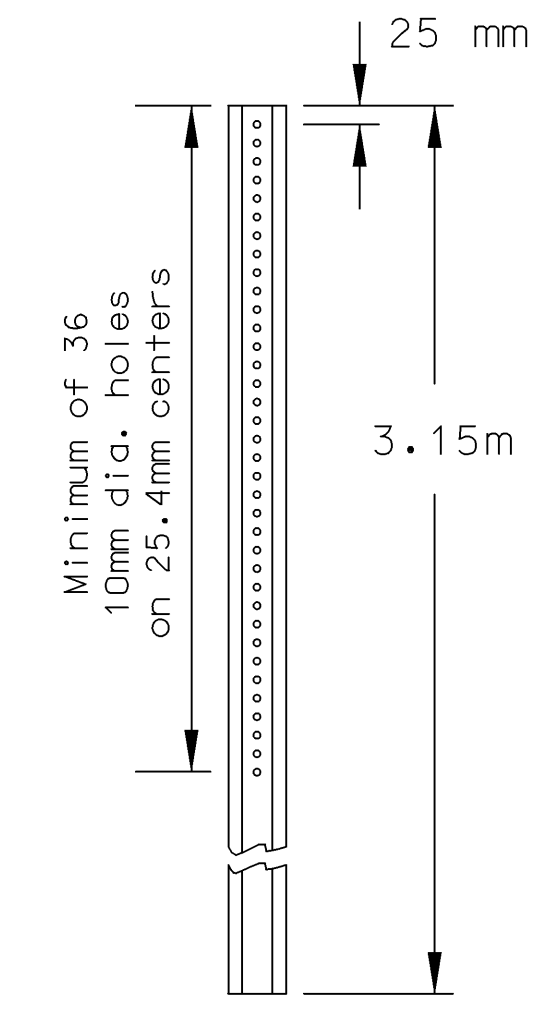
TYPE 3 OBJECT MARKERS:
 See flat sheet sign blank detail sheets for the aluminum alloys and thickness.
 The object marker sign face shall be covered with high performance yellow retroreflective sheeting.



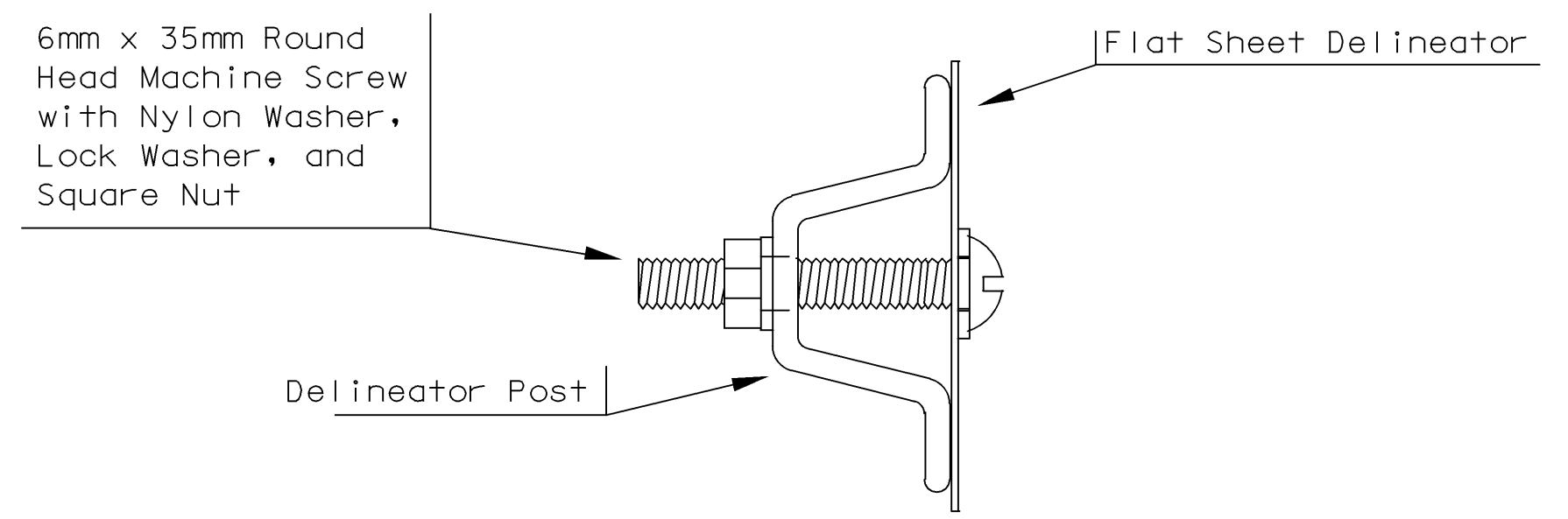
DIM.	3 kg/m
A	79
B	39
C	32
D	3

(DIMENSIONS ARE NOMINAL)

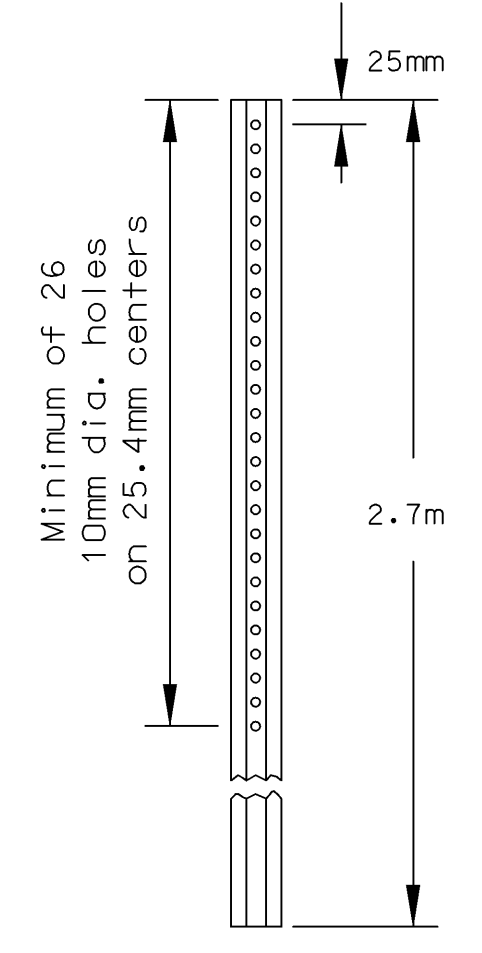
3kg. 'U' POST DETAILS



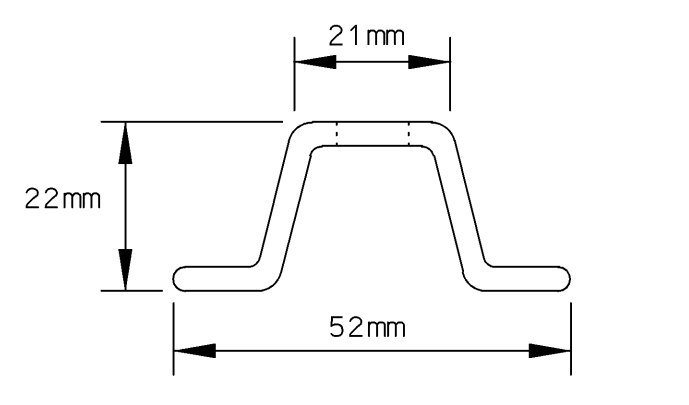
'U' POST PUNCHING DETAILS



'U' POST MOUNTING DETAILS

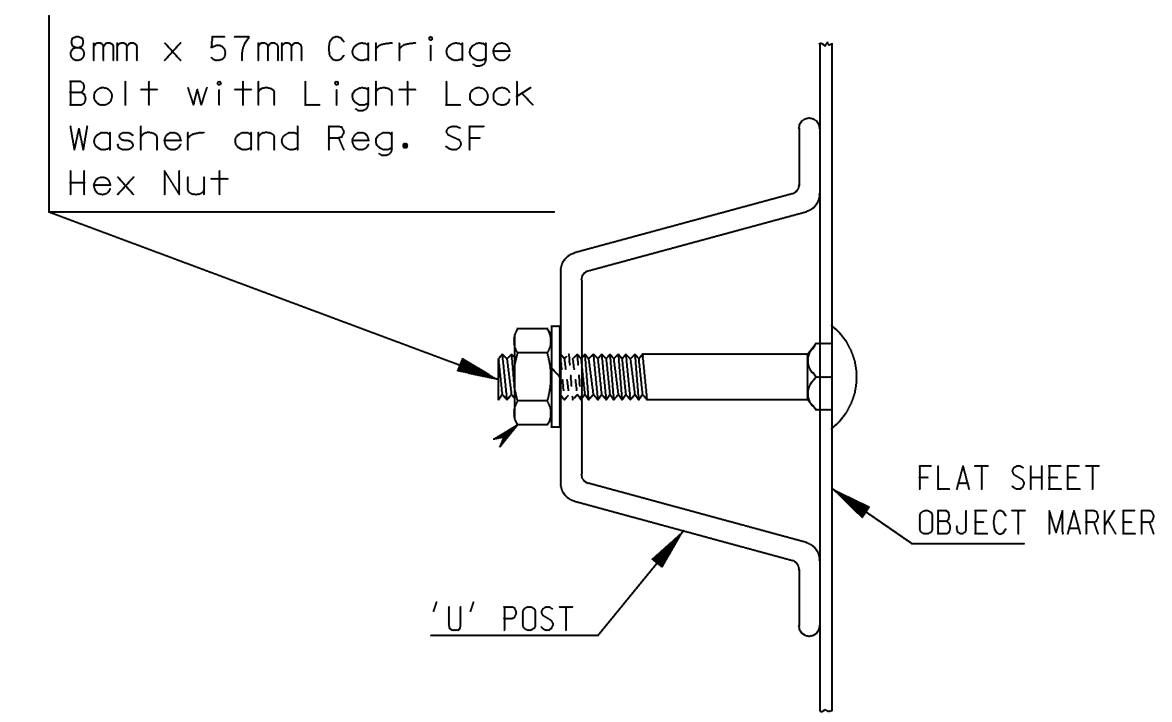


PUNCHING DETAILS



POST DIMENSIONS
 (All dimensions shown are nominal)

'U' POST PUNCHING DETAILS



'U' POST MOUNTING DETAILS

All dimensions are in millimeters unless otherwise noted.

3				
2				
1				
NO.	DATE	REVISIONS	BY	APP'D

KANSAS DEPARTMENT OF TRANSPORTATION
DESIGN DETAILS
FOR OBJECT MARKERS
(TYPE 2 AND TYPE 3)

TE415si 07-01-03

FHWA APPROVAL 07-22-2003	APP'D Steven A. Buckley
DESIGNED DDG	DETAILED WSB
DESIGN CK. SAB	DETAIL CK. DDG
QUANTITIES	QUAN. CK.
TRACED	TRACE CK.

Plotted By : @USERNAME@ Thacher Bldg., 4th Floor
 Plot File : @DGN@DGNSEC@
 Plot Date : @SYTIME@