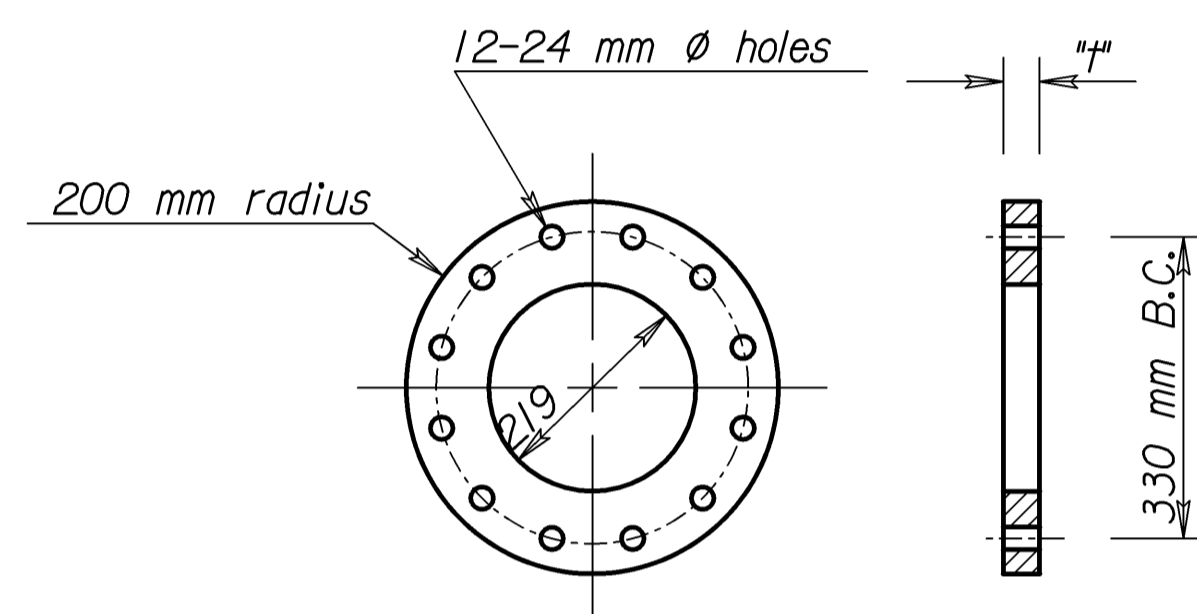
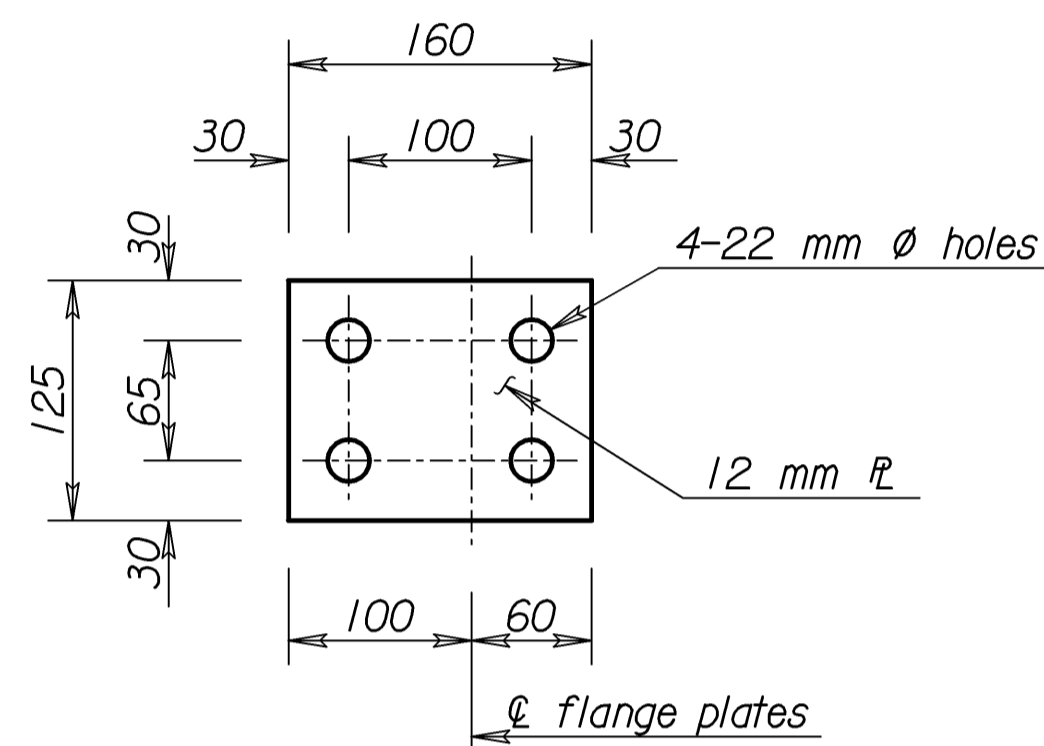
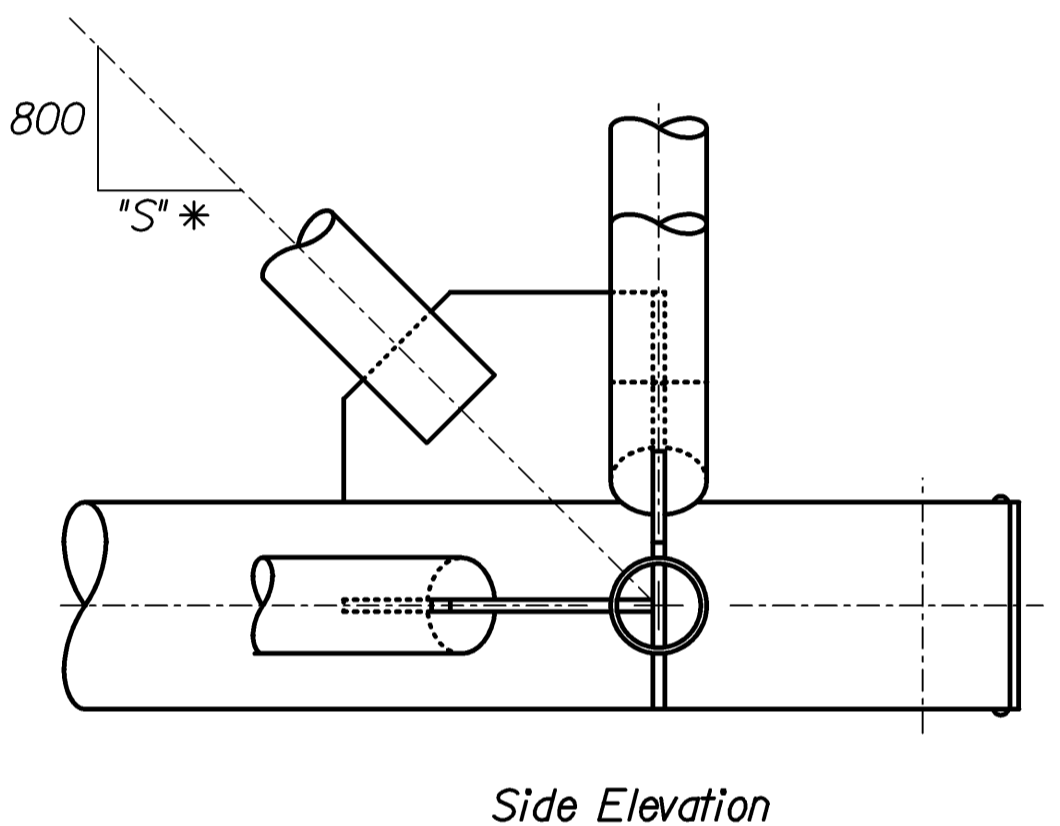
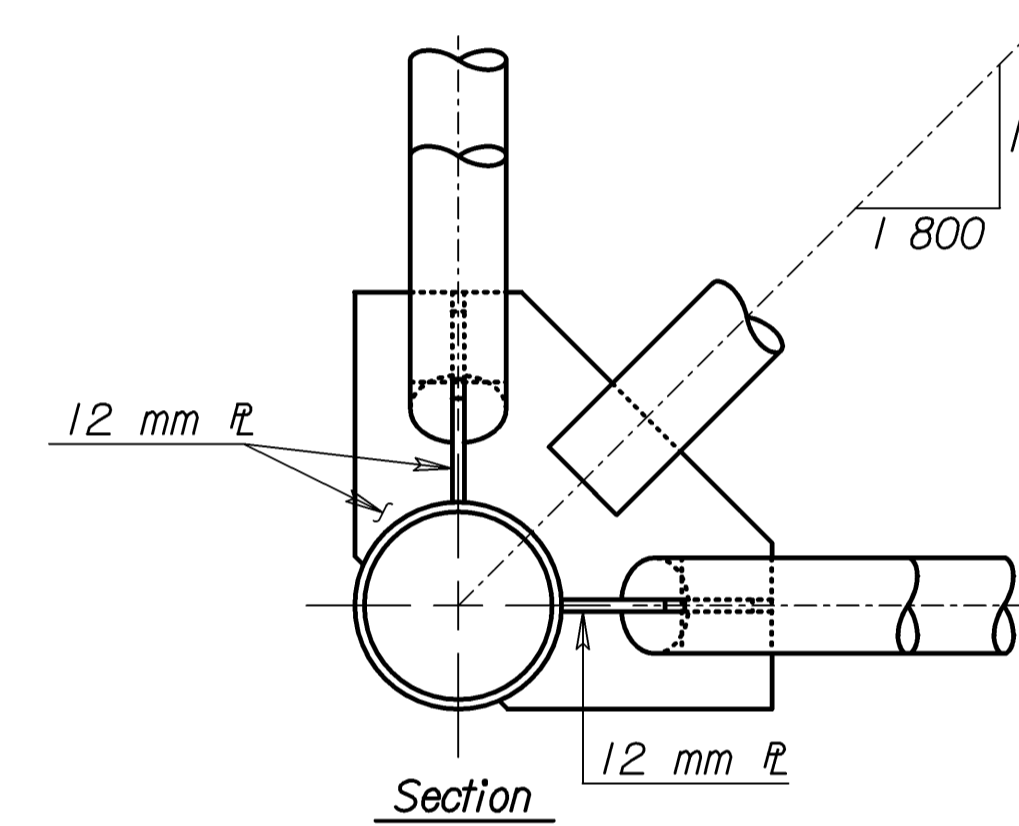
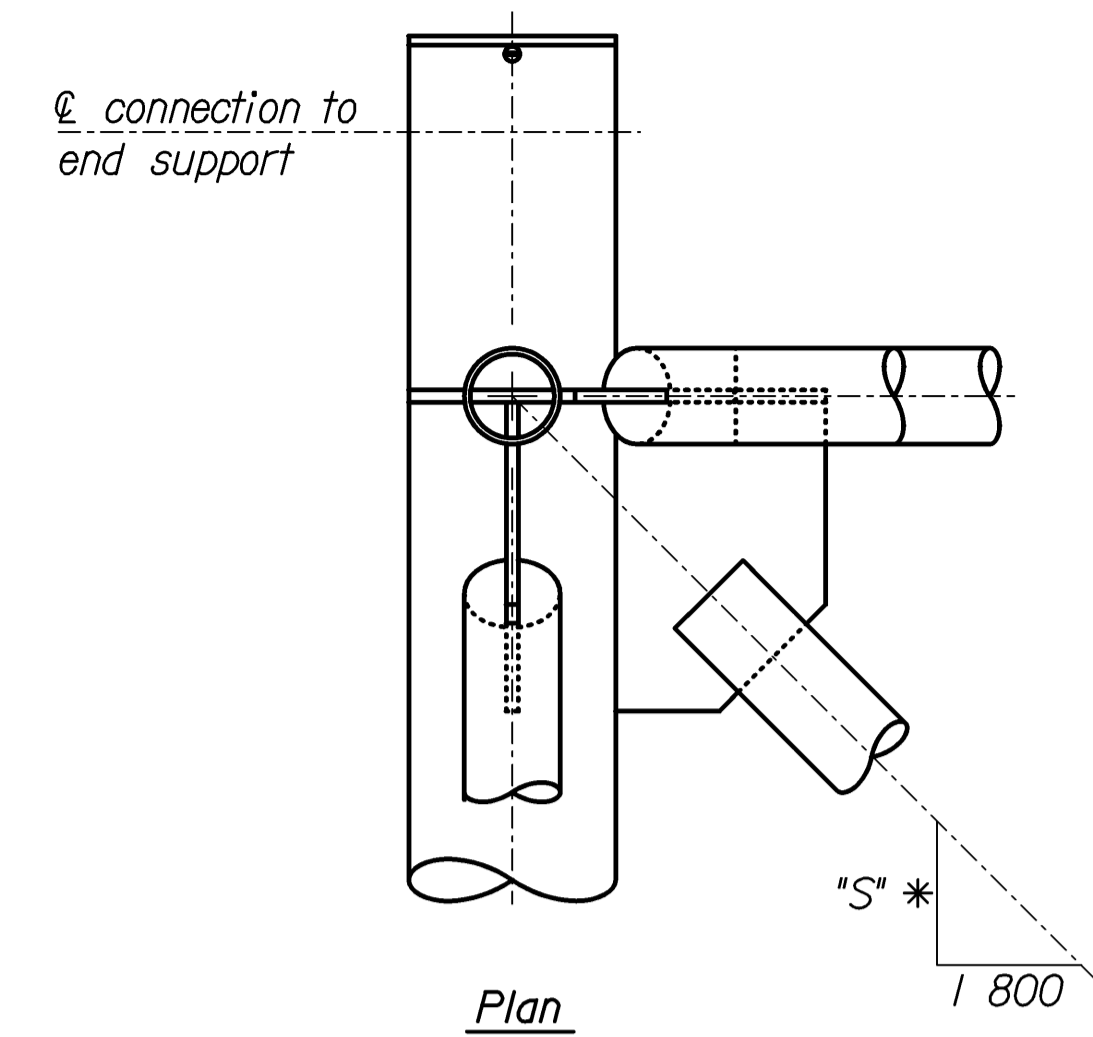


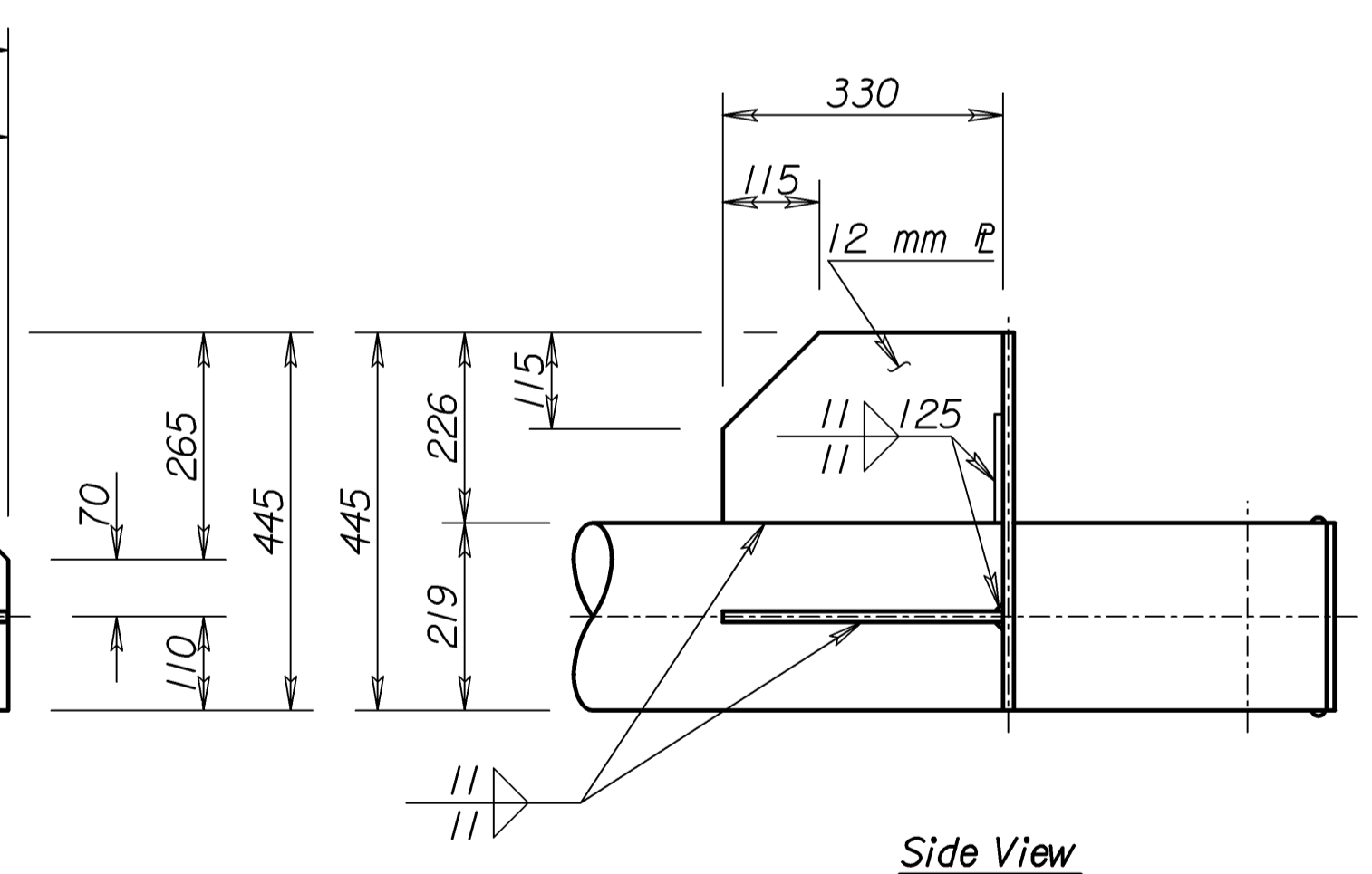
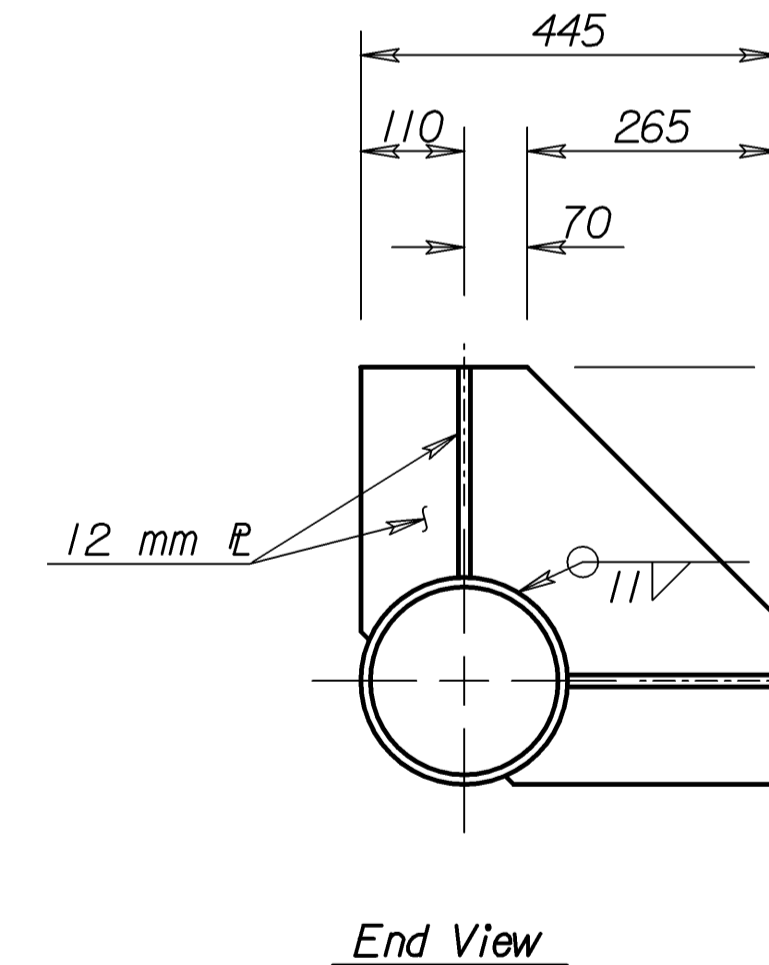
**TYPE I JOINT DETAILS**



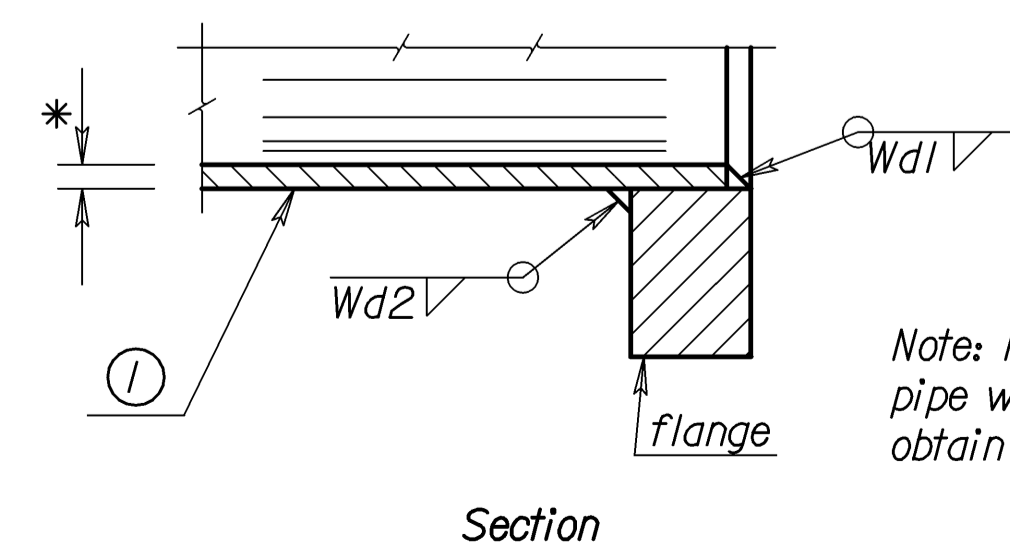
Material: ASTM B209M Alloy 6061-T6



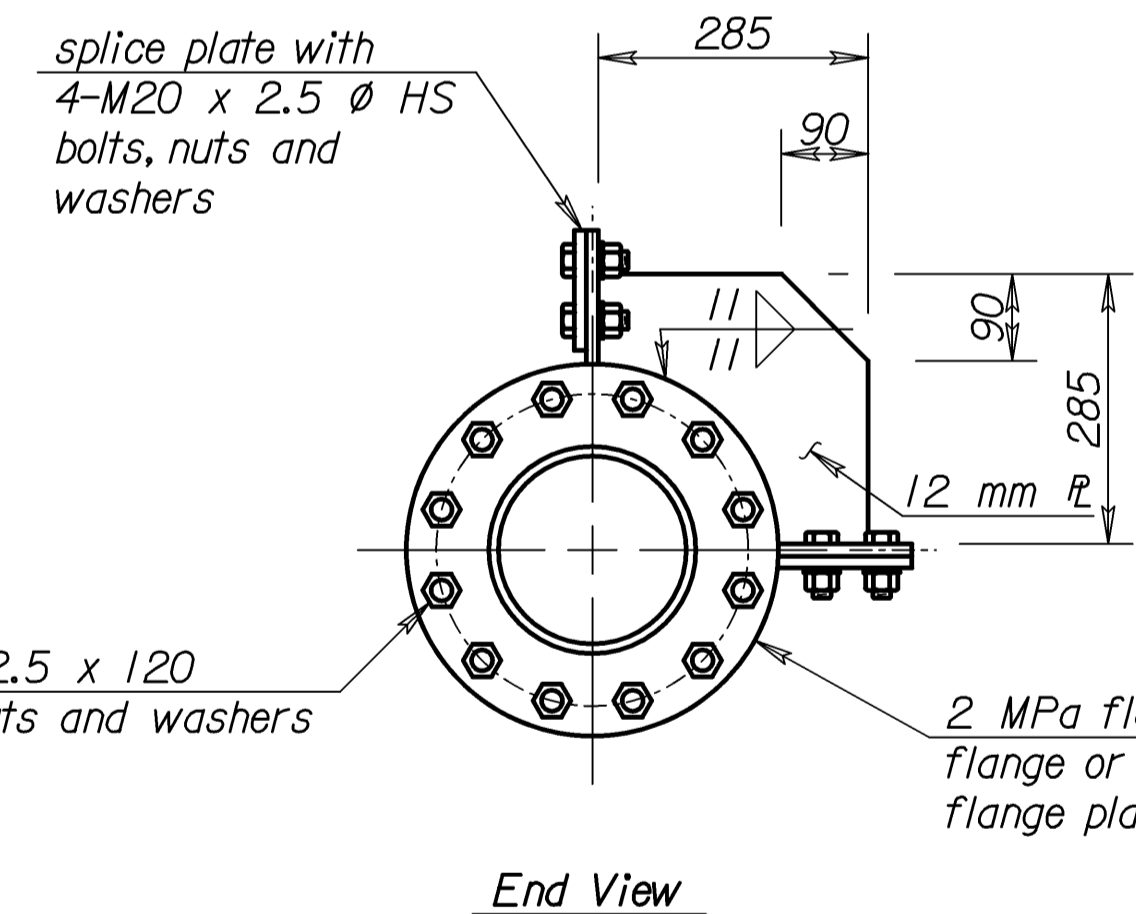
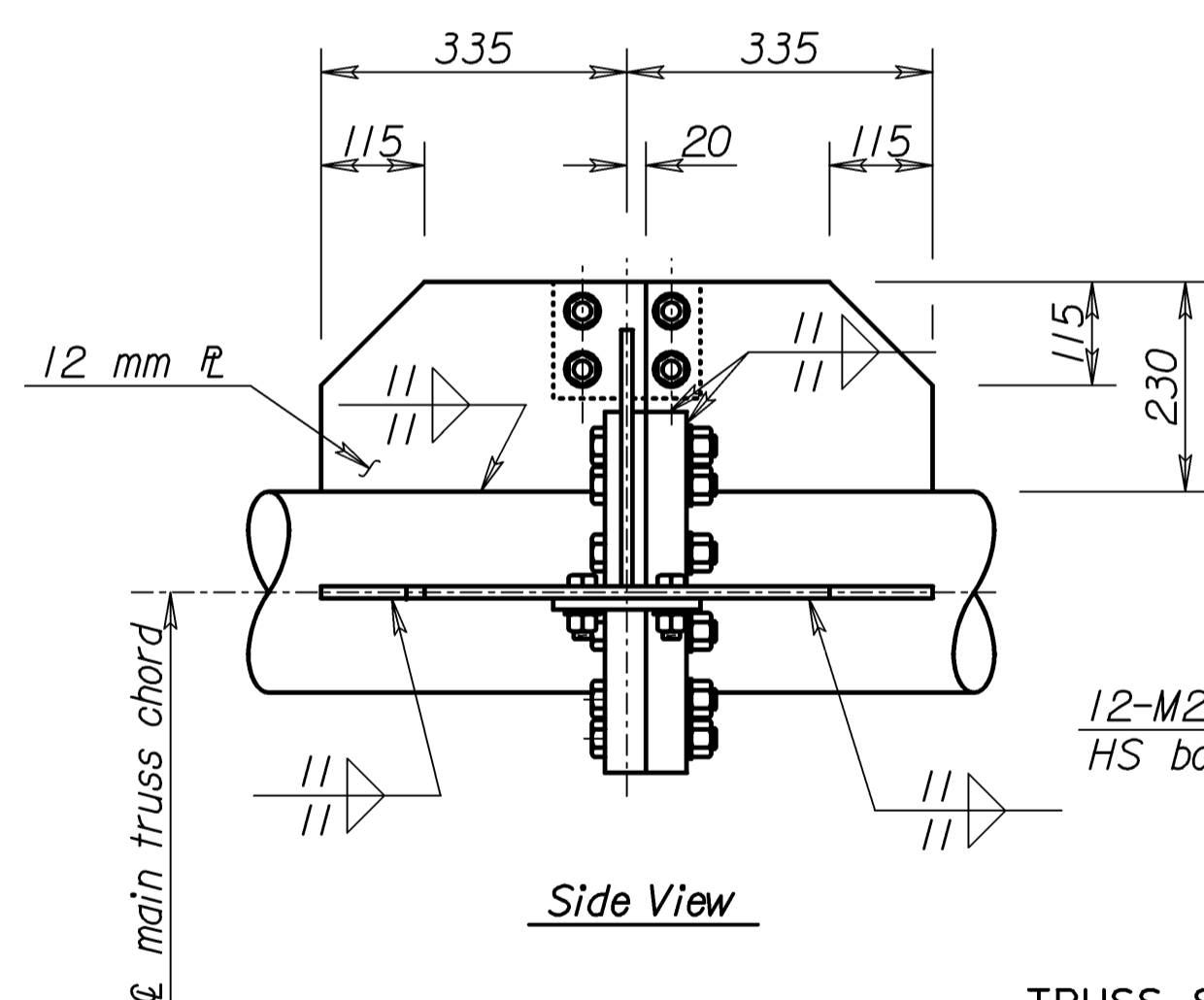
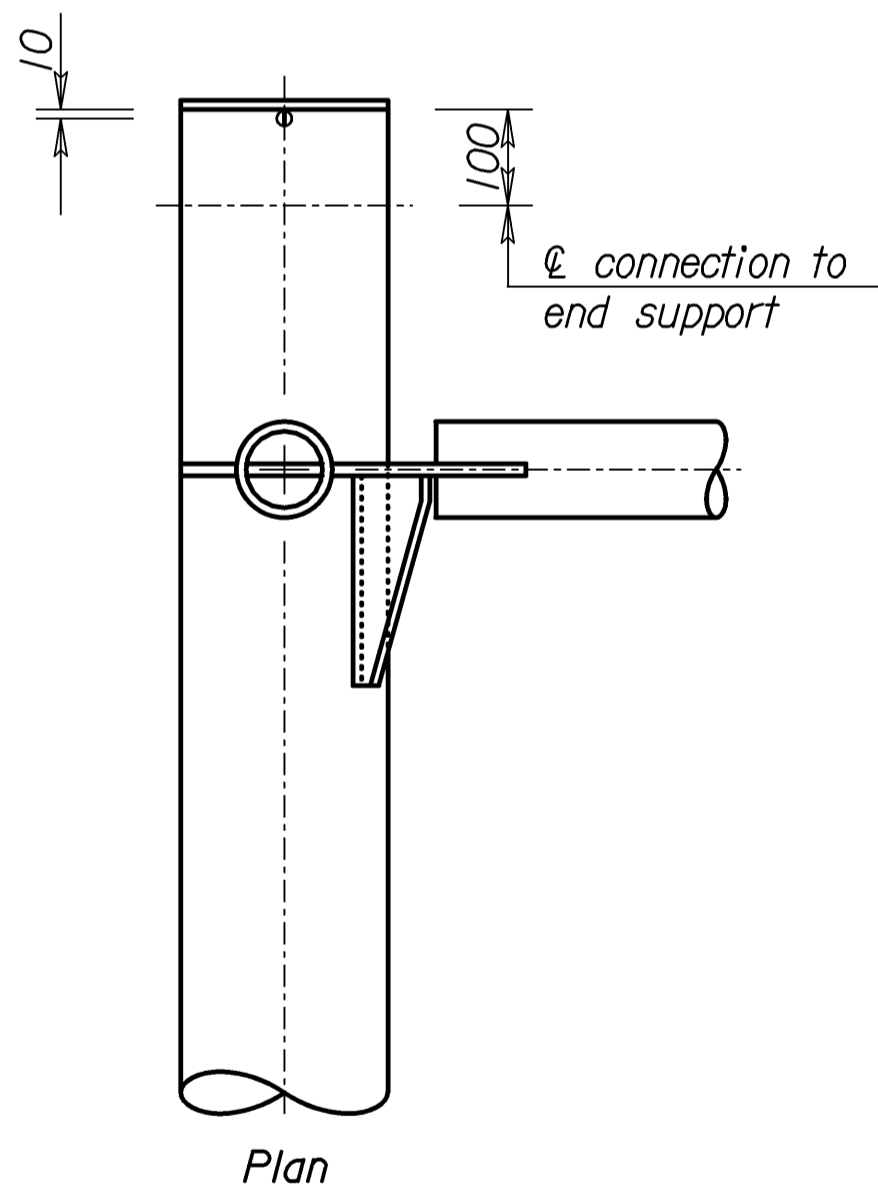
**DETAILS END JOINT TYPE II**



**TYPE II JOINT DETAILS**



Note: Make Wd1 depth equal to pipe wall thickness, build out to obtain full throat.

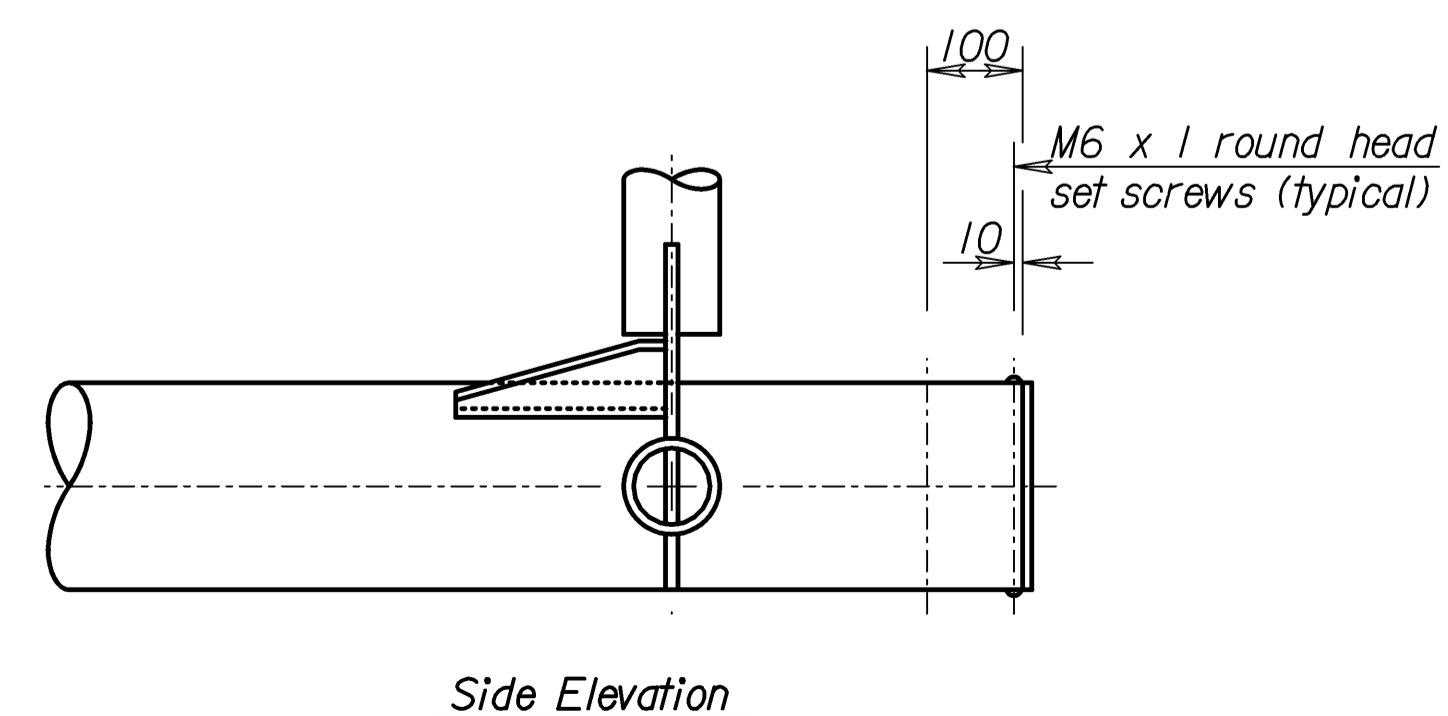
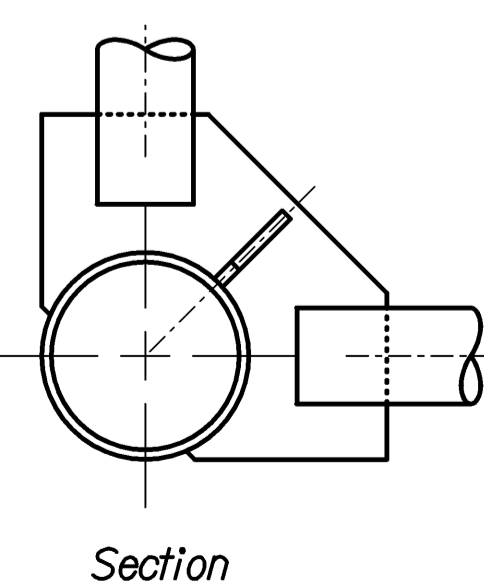


**TRUSS SPLICE DETAILS**

Member ①* wall thickness	Fillet Weld size Wd2	Splice $\phi$ "S"
3.76	5	38
6.35	8	45
8.18	10	50
10.3	11	60
12.7	14	70

\* See "Construction Layout" for wall thickness and "S"

Std. Base File: sl151bsi.dgn - Plot 4  
 Plotted By: \$\$\$\$  
 File: \$\$\$\$  
 Plot Date: \$\$\$\$



**DETAILS END JOINT TYPE I**

NO.	DATE	REVISIONS	BY	APP'D
<b>KANSAS DEPARTMENT OF TRANSPORTATION</b> STANDARD STRUCTURAL SIGN SUPPORTS SPAN TYPE OVERHEAD ALUMINUM ALTERNATE TRUSS END JOINT AND SPLICE DETAILS SL151B-04 SI				
DESIGNED	RDH	DETAIL CK.	RDH	QUAN. CK.
APP'D	4-10-97	APP'D	Kenneth F. Hurst	DJE
CADD		CADD		LES