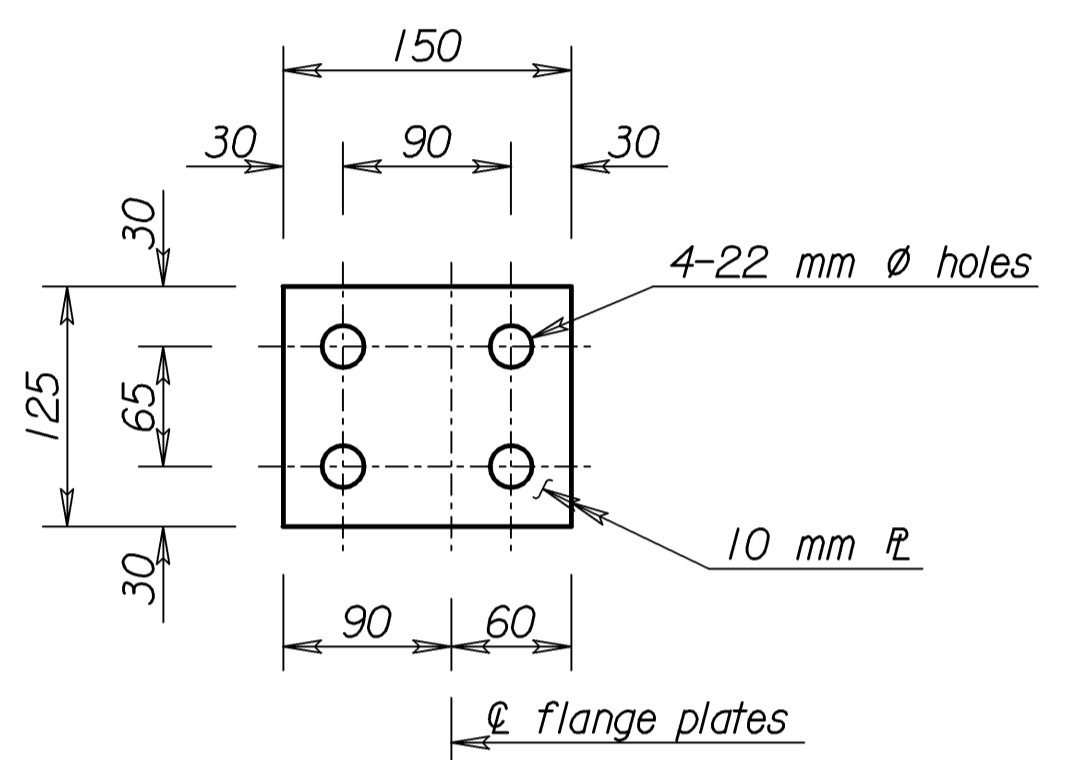
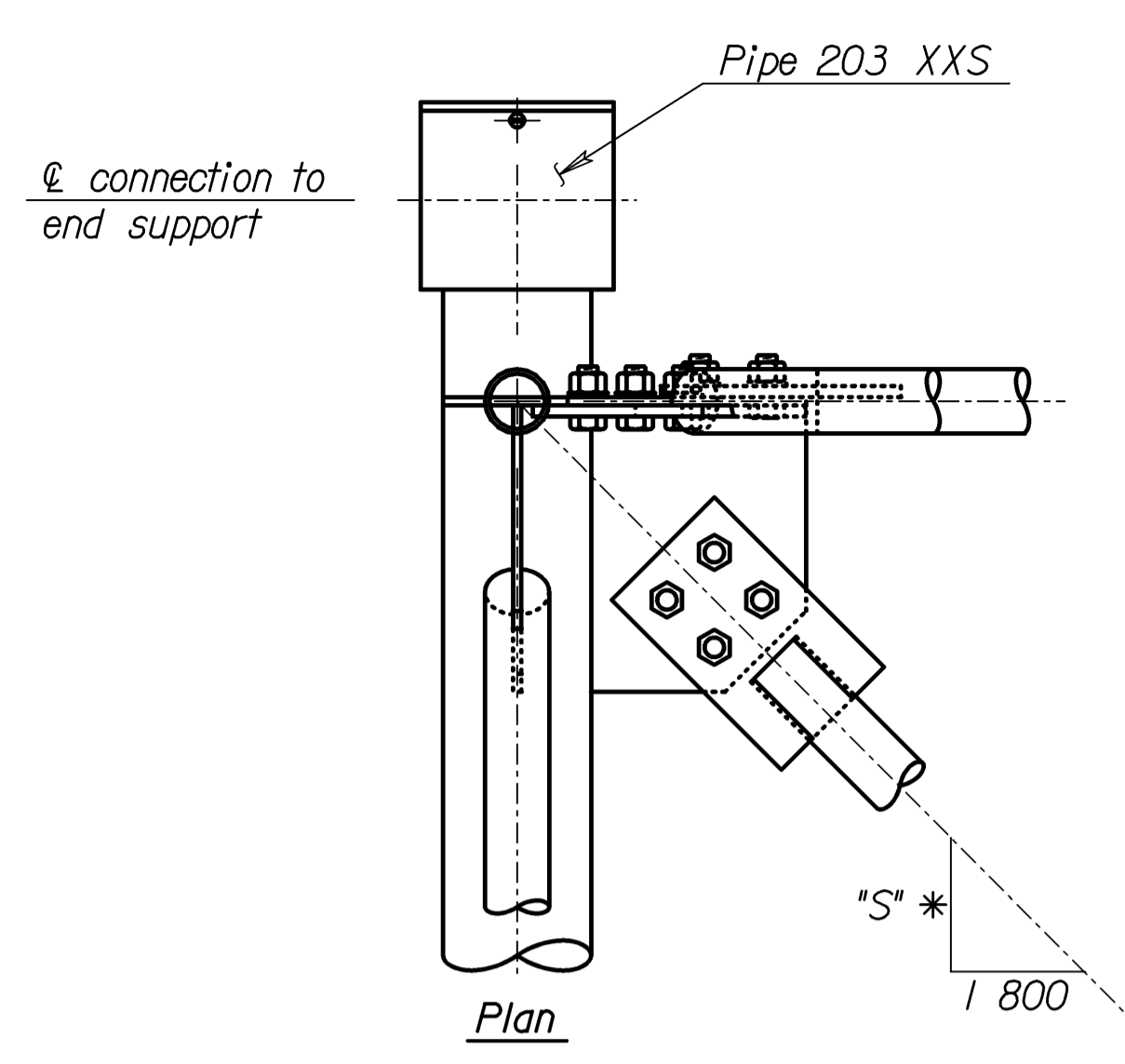


End View
TYPE I JOINT DETAILS

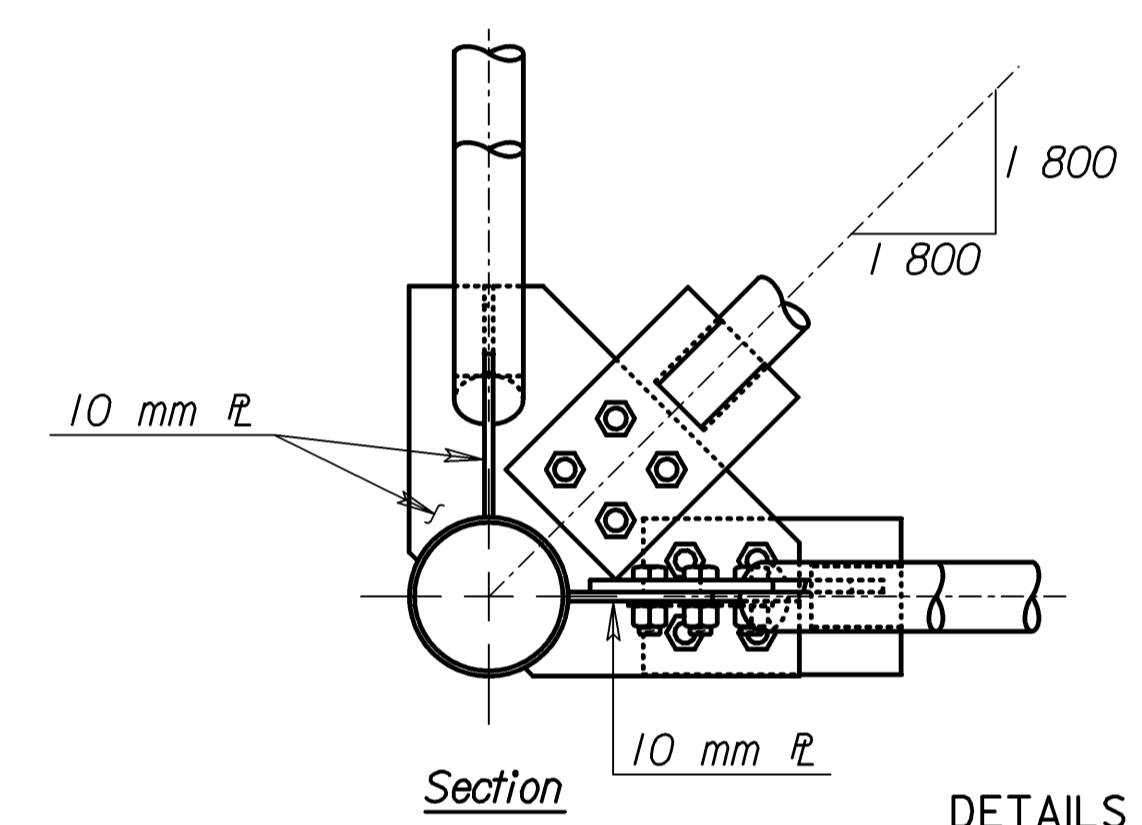


SPLICE PLATE DETAILS

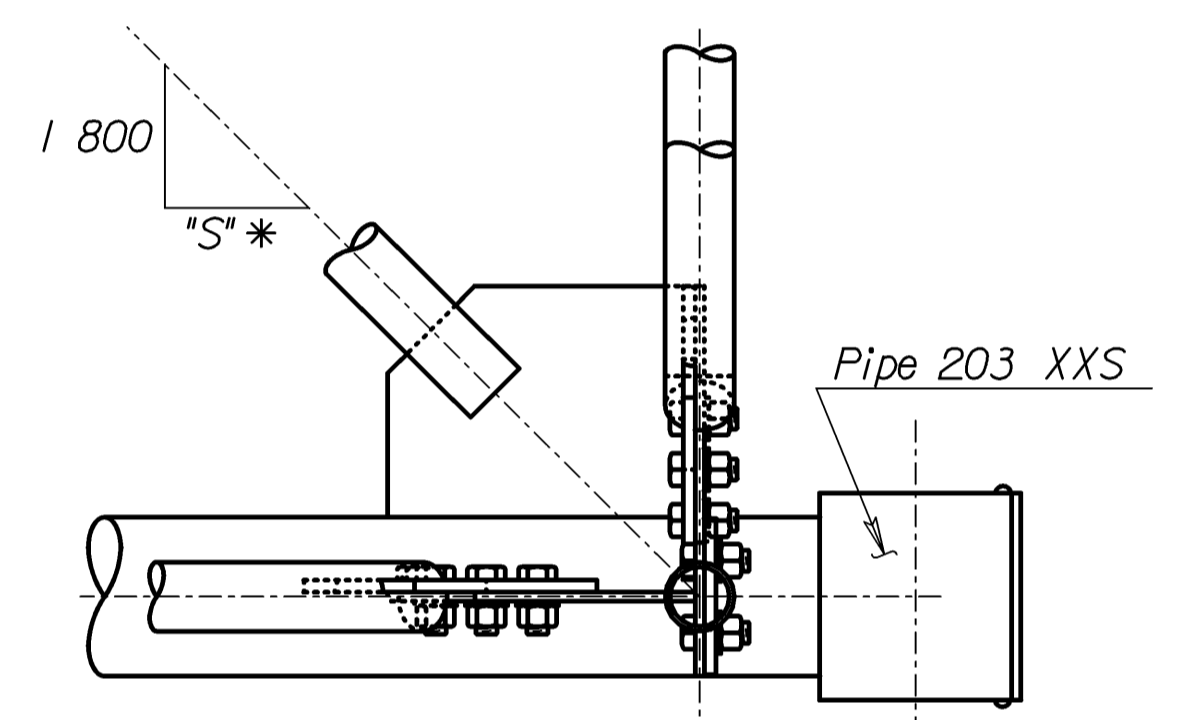


Plan

NOTE: Clip 3 mm from the washers for the M24 x 3 bolts in the Type II joints to clear weld.

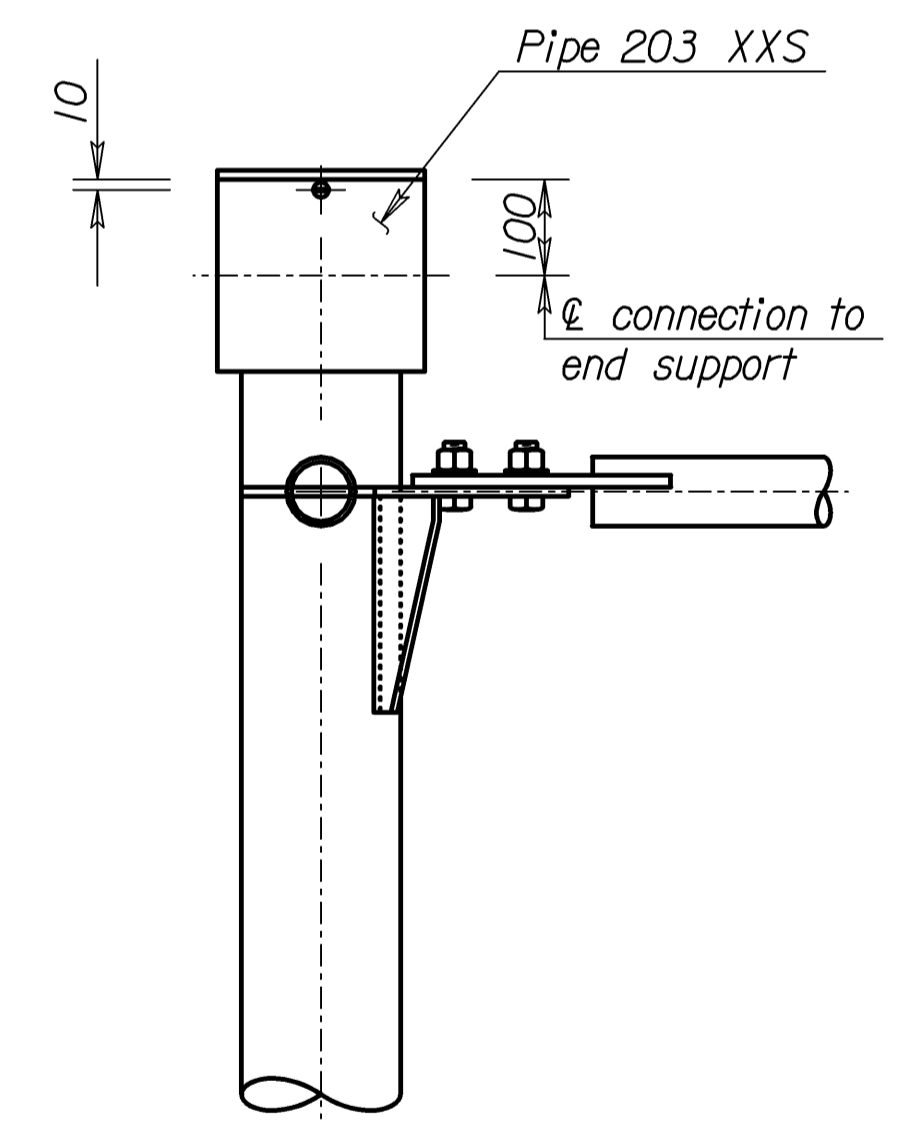


Section

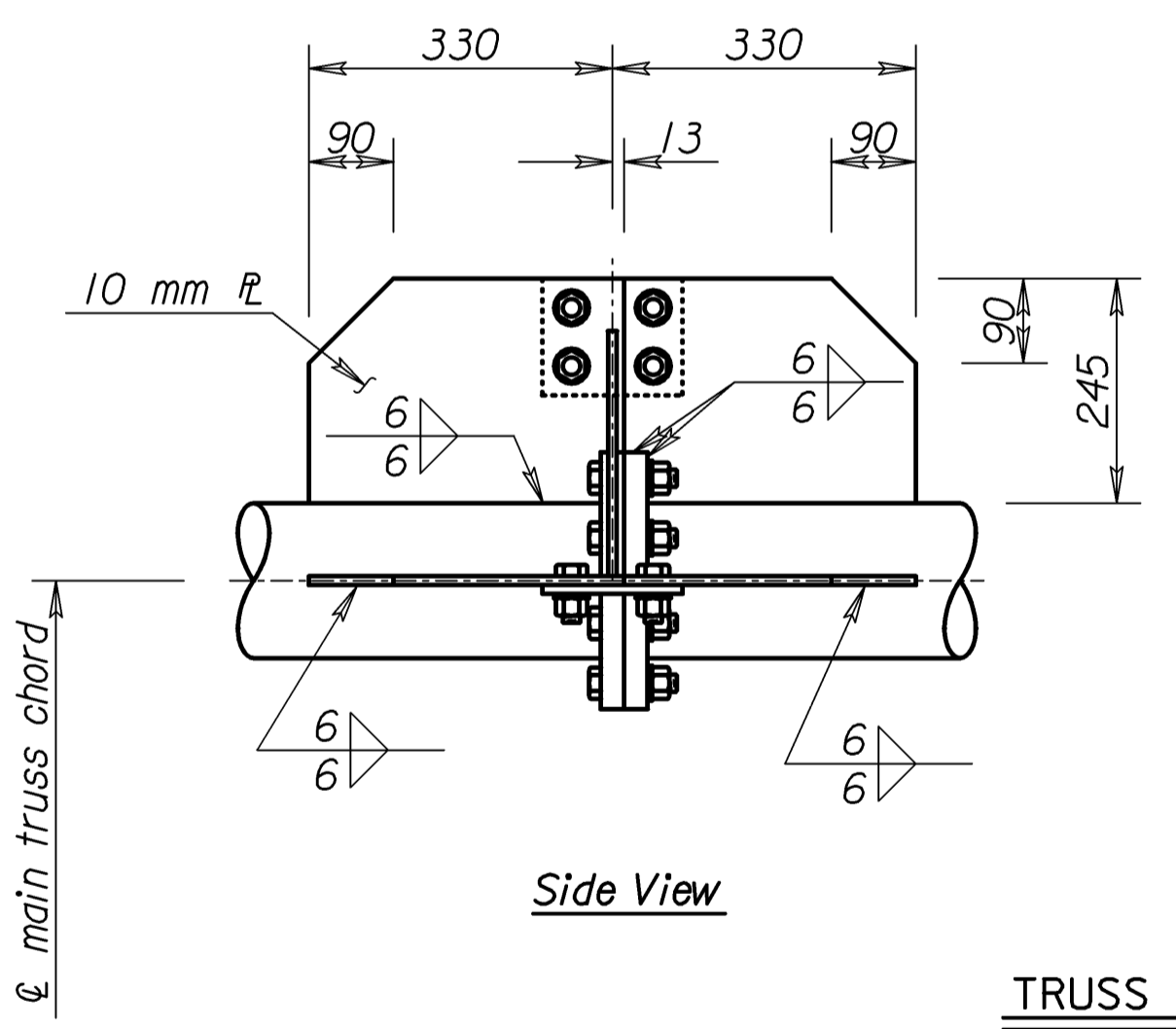


Side Elevation

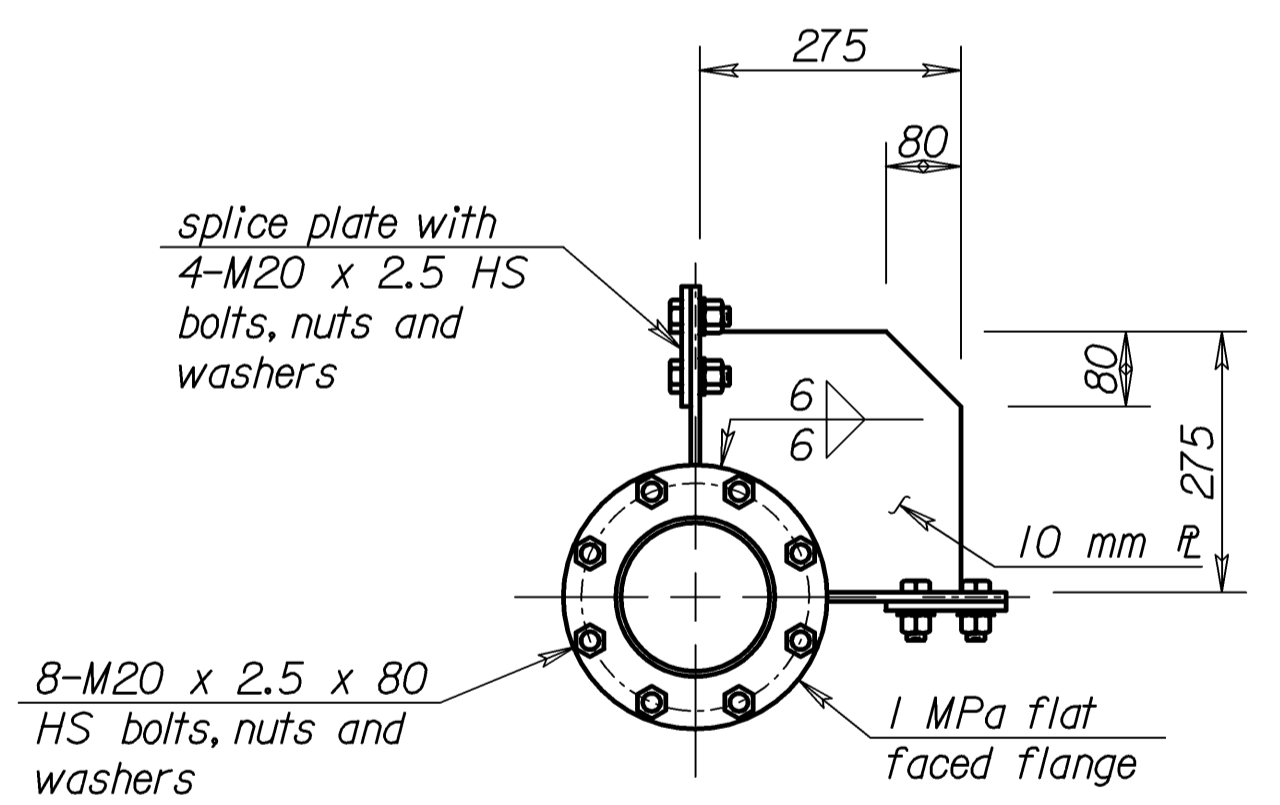
DETAILS END JOINT TYPE II
(showing welded and bolted connections mixed)



Plan

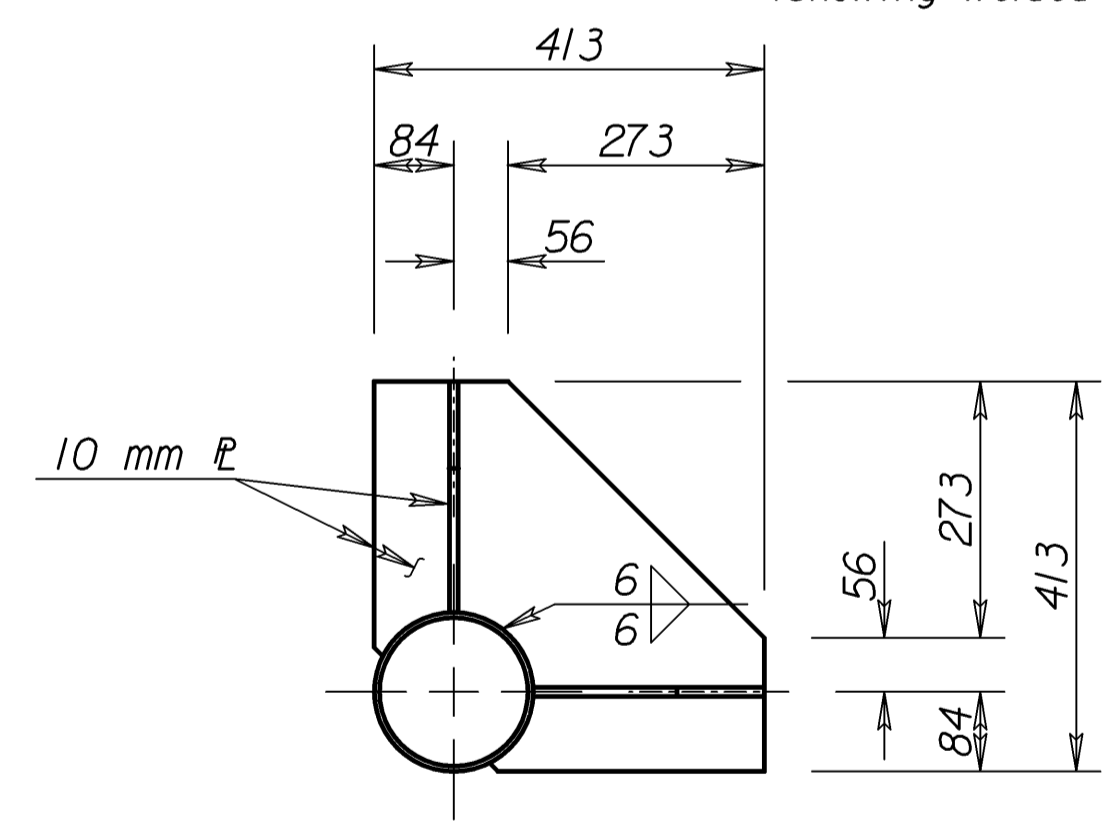


Side View

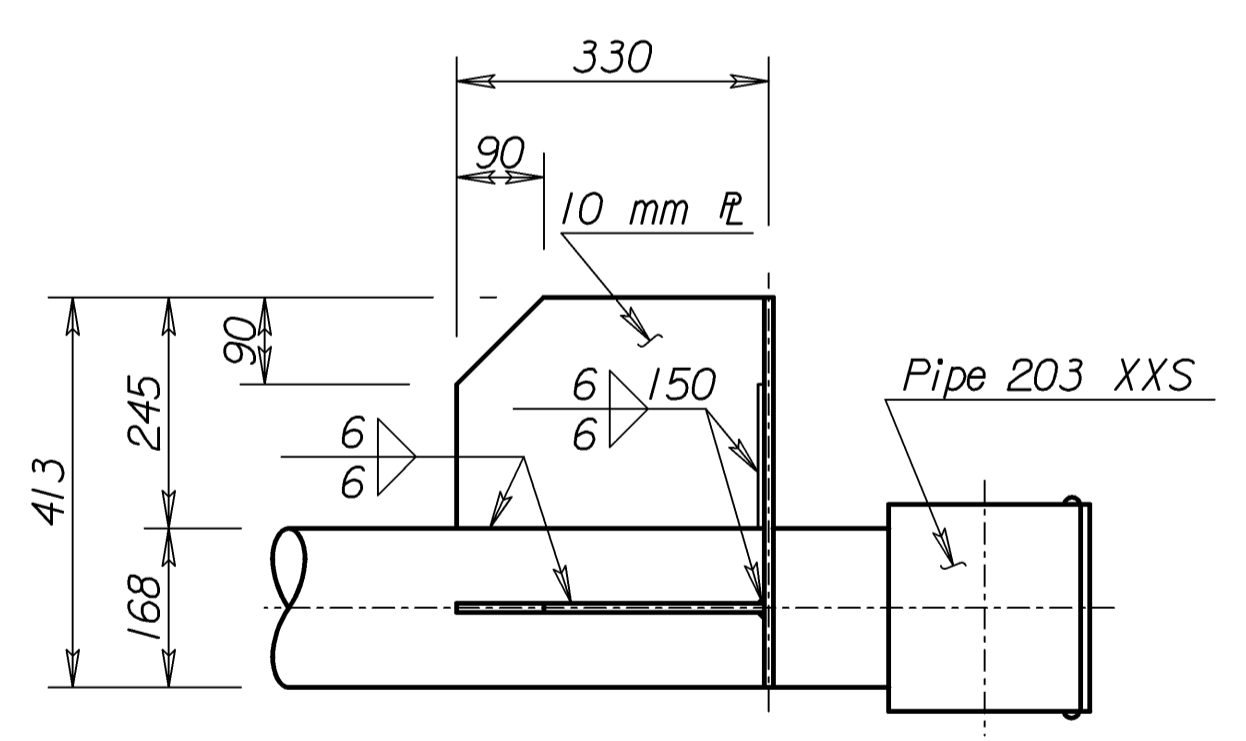


End View

TRUSS SPLICE DETAILS

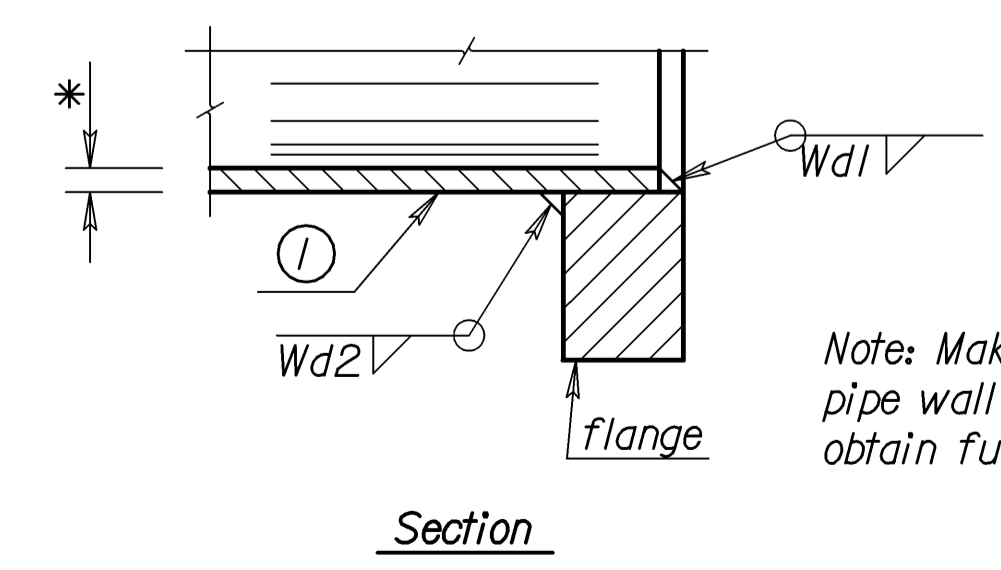


End View



Side View

TYPE II JOINT DETAILS

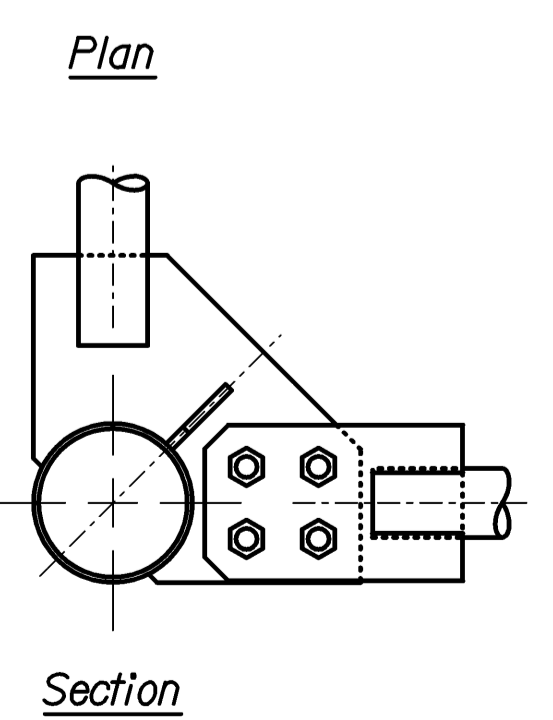


Section

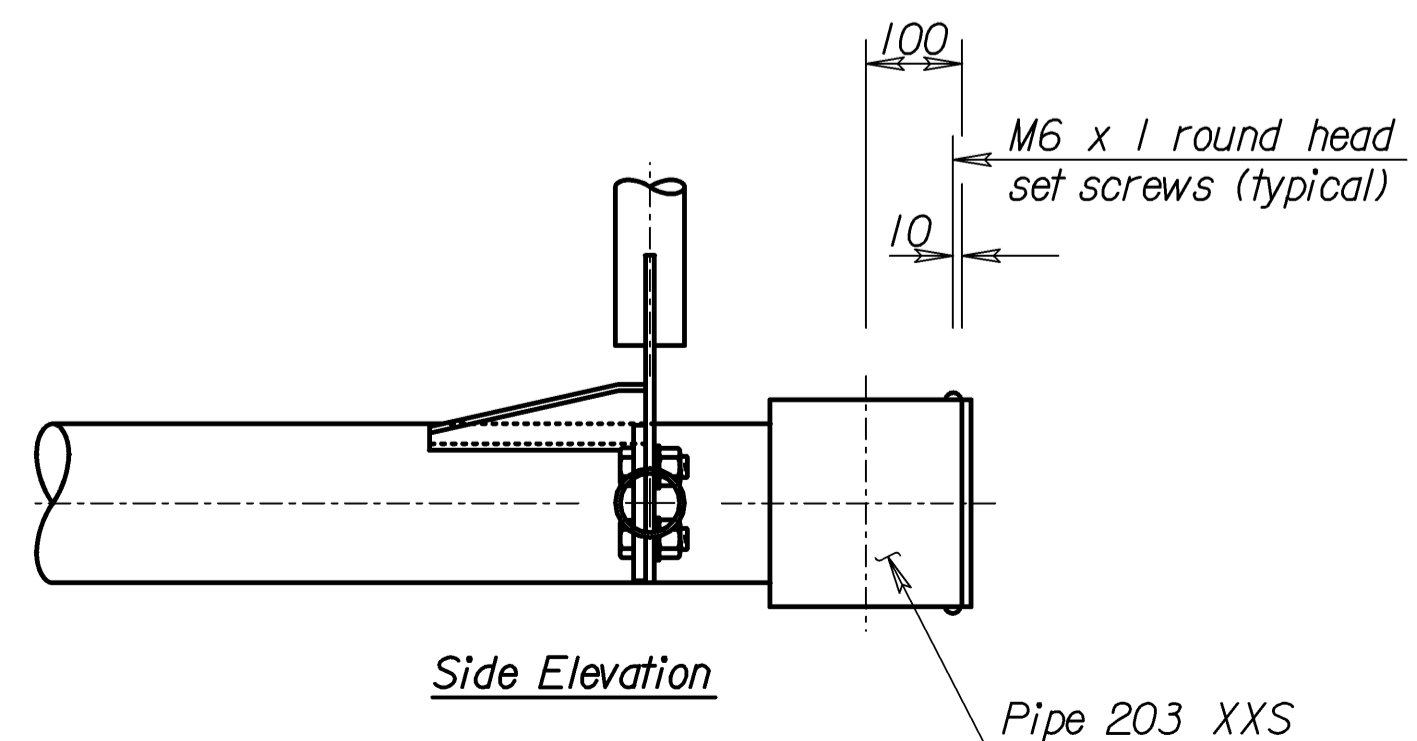
Note: Make Wd1 depth equal to pipe wall thickness, build out to obtain full throat.

Member ① * wall thickness	Fillet Weld size Wd2
4.78	5
5.56	6
7.11	8
8.74	8
11.0	10

* See "Construction Layout" for wall thickness and "S"



Section



Side Elevation

DETAILS END JOINT TYPE I
(showing welded and bolted connections mixed)

Std. Base File: sl151csi.dgn - Plot 4
Plotted By: \$\$\$\$
File: \$\$\$\$
Plot Date: \$\$\$\$

NO.	DATE	REVISIONS	BY	APP'D
KANSAS DEPARTMENT OF TRANSPORTATION STANDARD STRUCTURAL SIGN SUPPORTS SPAN TYPE OVERHEAD STEEL ALTERNATE TRUSS END JOINT AND SPLICE DETAILS SL151C-04 SI				
DESIGNED	BFM	QUANTITIES	KFH	APP'D Kenneth F. Hurst
DESIGN CK.	RDH	DETAIL CK.	RDH	CADD CK. DUE LES