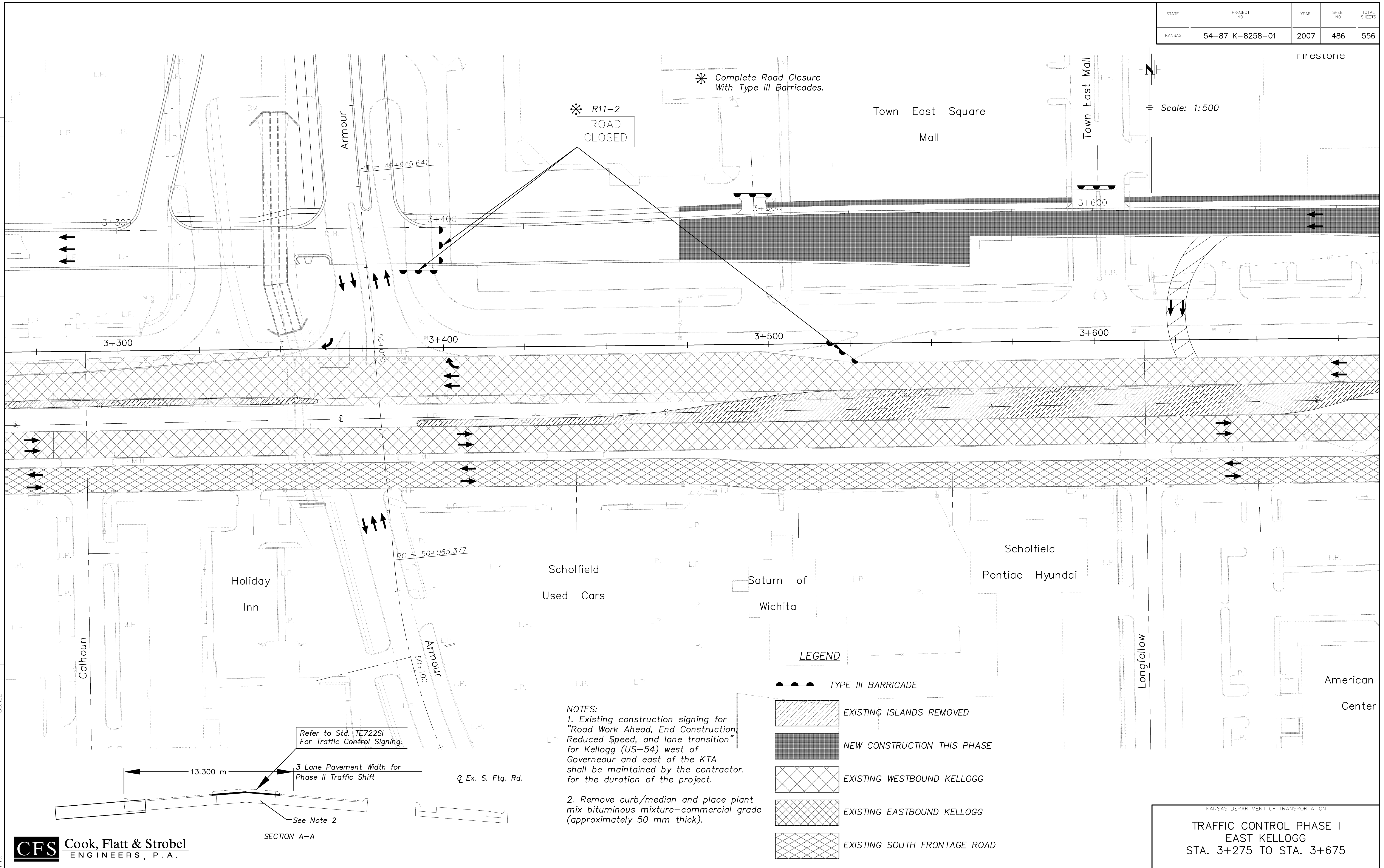


STATE	PROJECT NO.	YEAR	SHEET NO.	TOTAL SHEETS
KANSAS	54-87 K-8258-01	2007	486	556

DATE	
BY	
REFERENCE NOTED	
REFERENCE CHECKED	



Scale: 1:500

LEGEND

- TYPE III BARRICADE
- EXISTING ISLANDS REMOVED
- NEW CONSTRUCTION THIS PHASE
- EXISTING WESTBOUND KELLOGG
- EXISTING EASTBOUND KELLOGG
- EXISTING SOUTH FRONTAGE ROAD

NOTES:

- Existing construction signing for "Road Work Ahead, End Construction, Reduced Speed, and lane transition" for Kellogg (US-54) west of Gouverneur and east of the KTA shall be maintained by the contractor for the duration of the project.
- Remove curb/median and place plant mix bituminous mixture—commercial grade (approximately 50 mm thick).

Refer to Std. TE722SI For Traffic Control Signing.

3 Lane Pavement Width for Phase II Traffic Shift

See Note 2

SECTION A-A

KANSAS DEPARTMENT OF TRANSPORTATION
TRAFFIC CONTROL PHASE I
 EAST KELLOGG
 STA. 3+275 TO STA. 3+675