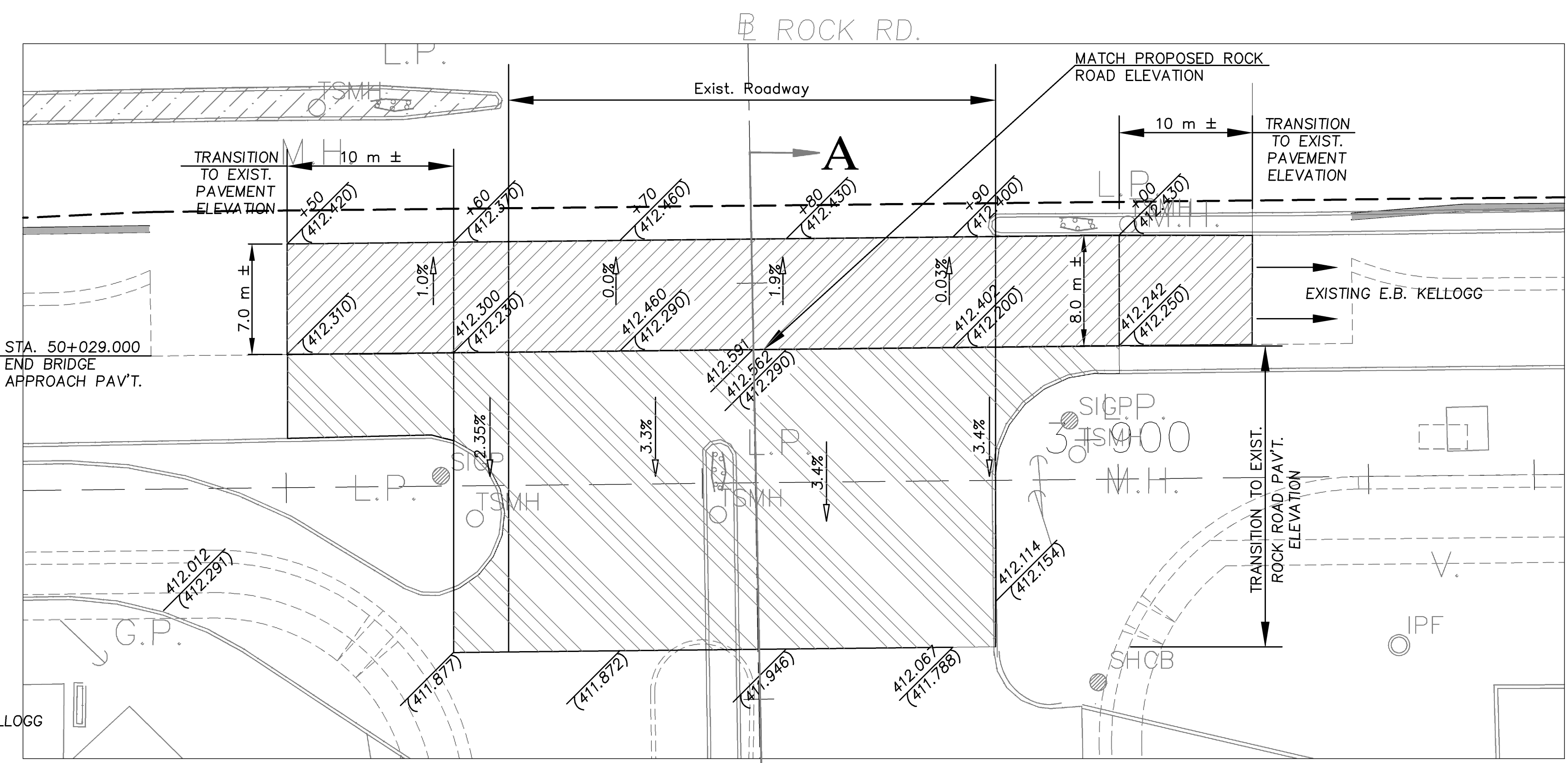


STATE	PROJECT NO.	YEAR	SHEET NO.	TOTAL SHEETS
KANSAS	54-87 K-8258-01	2006	488.008	556

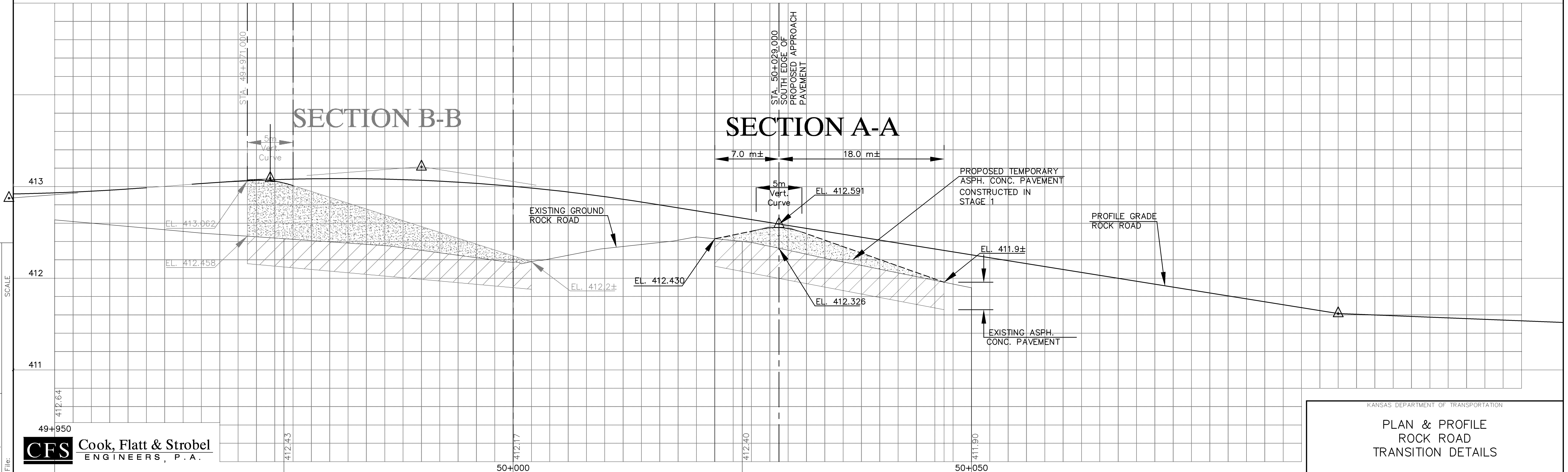
DATE	BY

REFERENCE NOTED	REFERENCE CHECKED



LEGEND

- Existing Pavement Elev.
- Proposed Temp. Asph. Conc. Elev.
- CONST. TEMP. ASPH. CONC. TRANSITION ON E.B. KELLOGG
- CONST. TEMP. ASPH. CONC. TRANSITION ON ROCK RD.
- REMOVE EXIST. PAVEMENT. CONST. TEMP. ASPH. CONC. TRANSITION.



Drawn by: **CFS** Cook, Flatt & Strobel ENGINEERS, P.A.

KANSAS DEPARTMENT OF TRANSPORTATION
**PLAN & PROFILE
 ROCK ROAD
 TRANSITION DETAILS**