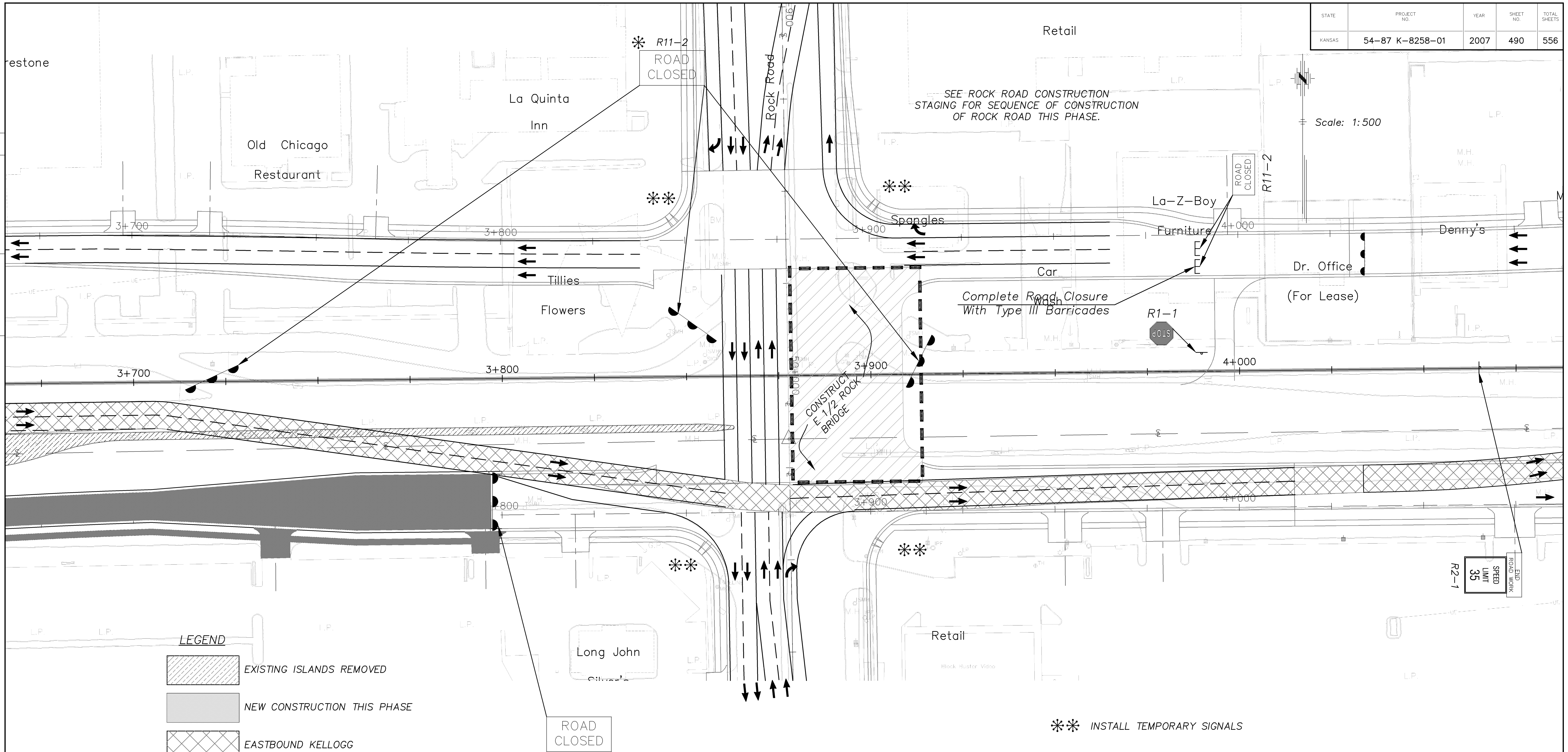
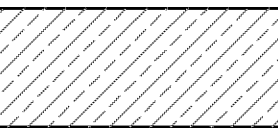
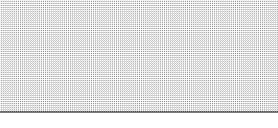



STATE	PROJECT NO.	YEAR	SHEET NO.	TOTAL SHEETS
KANSAS	54-87 K-8258-01	2007	490	556

DATE	
BY	
REFERENCE NOTED	
REFERENCE CHECKED	



LEGEND

-  EXISTING ISLANDS REMOVED
-  NEW CONSTRUCTION THIS PHASE
-  EASTBOUND KELLOGG

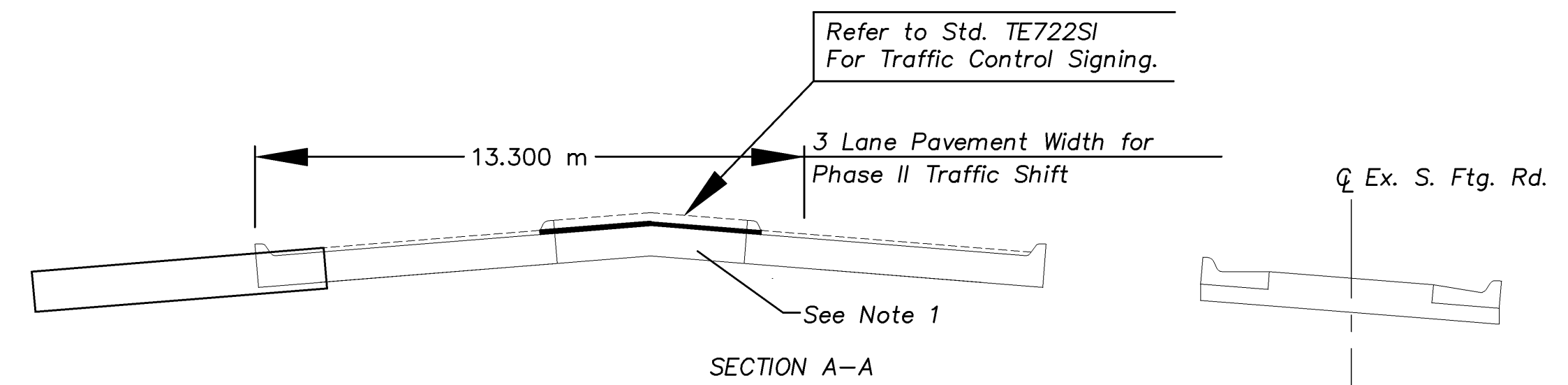
R11-2
ROAD CLOSED

NOTE: REMOVE CURBS AND ISLAND. PLACE PLANT MIX, BITUMINOUS MIXTURE-COMMERCIAL GRADE OVER A 250 mm GEOGRID REINFORCED BASE.

** INSTALL TEMPORARY SIGNALS

NOTES:
1. The existing curb and median was constructed over concrete pavement which shall remain.

GENERAL SEQUENCE OF CONSTRUCTION PHASE II
1. Move Existing WB Kellogg to new North Frontage Road.
2. Modify Existing WB Kellogg to accommodate 2 thru lanes and 1 turn lane for temporary EB Kellogg.
(Total width to be 13.3 m)



KANSAS DEPARTMENT OF TRANSPORTATION
TRAFFIC CONTROL PHASE II
EAST KELLOGG
STA. 3+675 TO STA. 4+075