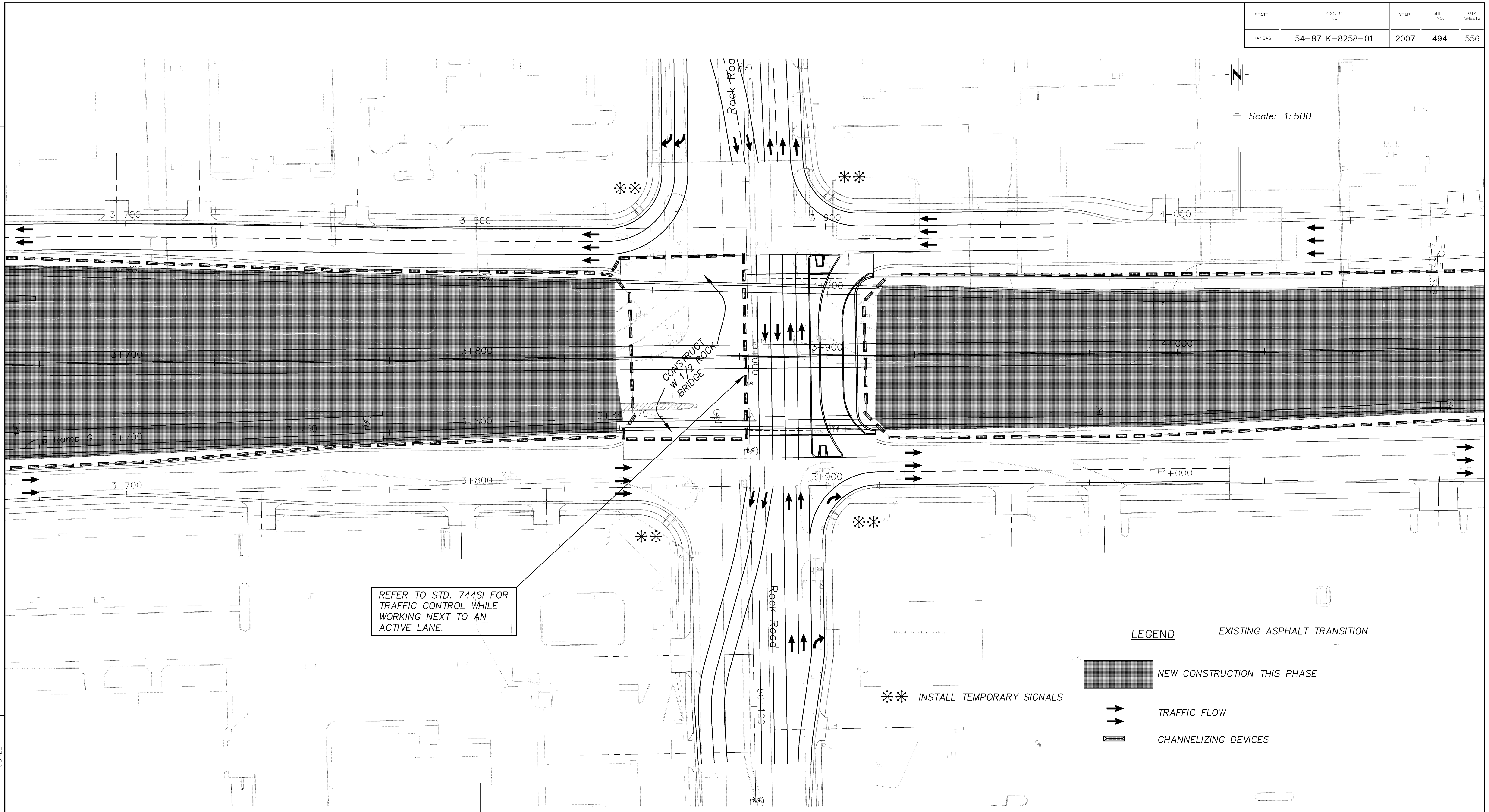


STATE	PROJECT NO.	YEAR	SHEET NO.	TOTAL SHEETS
KANSAS	54-87 K-8258-01	2007	494	556

DATE	BY

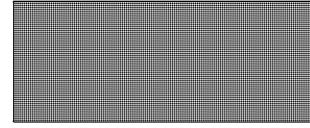
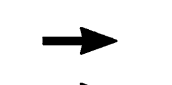



REFERENCE NOTED	REFERENCE CHECKED



Scale: 1:500

REFER TO STD. 744SI FOR TRAFFIC CONTROL WHILE WORKING NEXT TO AN ACTIVE LANE.

LEGEND

-  NEW CONSTRUCTION THIS PHASE
-  TRAFFIC FLOW
-  CHANNELIZING DEVICES
-  EXISTING ASPHALT TRANSITION
-  ** INSTALL TEMPORARY SIGNALS

BM #20 - "□" Cut Top of Curb @ N. End of Island Around the W. Eastgate Plaza Sign, 25.7 m S. of Q. of S. Frontage Rd. 67.4 m Rt. Q. Sta. 4+041.023 Elev. = 410.338

KANSAS DEPARTMENT OF TRANSPORTATION
TRAFFIC CONTROL PHASE III
EAST KELLOGG
STA. 3+675 TO STA. 4+075

CFS Cook, Flatt & Strobel
ENGINEERS, P.A.

BM #17 - "□" Cut Top Of Curb @ E.N.E. ECR of Entrance Between Firestone & Old Chicago Restaurant, 36.0 m N. of N. Frontage Rd. 44.6 m Lt. Q. Sta. 3+711.922 Elev. = 412.239

BM #18 - "□" Cut Top of Curb @ N.N.E. ECR of a Business Ent. 61.0 m N. & 20.0 m W. of Q. of Intersection Kellogg & Rock Rd. 16.9 m Rt. Rock Rd. Q. Sta. 49+955.573 Elev. = 412.453

City of Wichita BM #19 - Brass In Top of Conc. Monument 43.5 m N. & 16.5 m E. of Q. of Intersection Kellogg & Rock Rd. = City of Wichita Benchmark JFG 1973, Elev. = 412.596 m 15.2 m Lt. Rock Rd. Q. Sta. 49+973.278 Elev. = 412.606