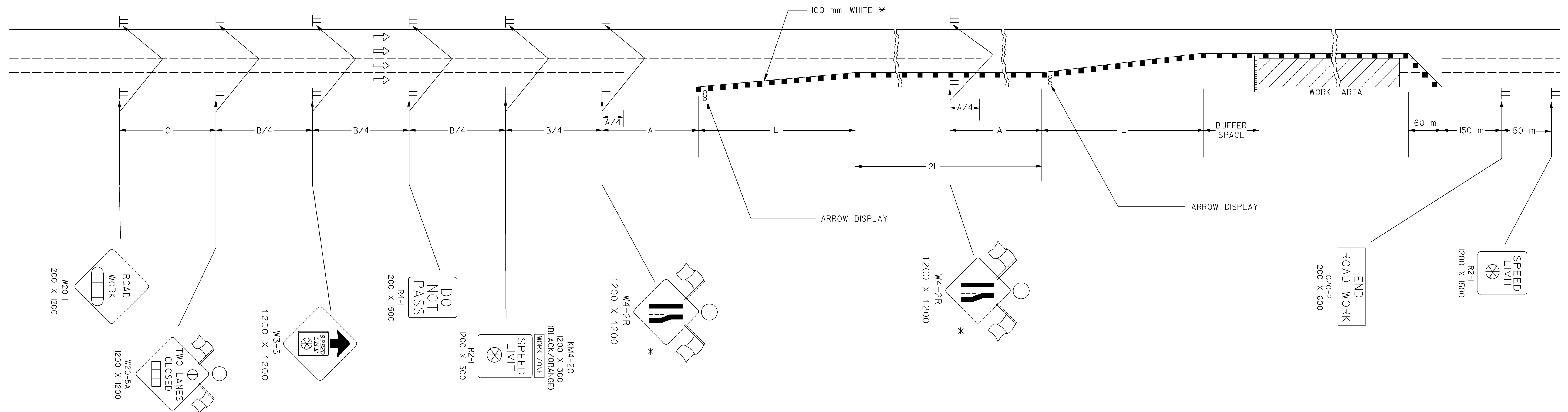


STATE	PROJECT NO.	YEAR	SHEET NO.	TOTAL SHEETS
KANSAS	54-87 K-8258-01	2007	504	556

REFER TO STD. TE710SI FOR ADDITIONAL INFORMATION ON TRAFFIC CONTROL SIGNS AND SIGN SPACING.
REFER TO STD. TE702SI FOR INFORMATION ON TAPERS AND CHANNELIZING DEVICES.
REFER TO STD. TE700SI FOR LENGTH OF BUFFER SPACE.



* FOR LEFT LANE CLOSURES USE W4-2L AND YELLOW EDGE LINE ALONG CHANNELIZING DEVICES.

- ||| Type III Barricades
- Channelizing Device
- ▨ AHEAD, 1500 FT OR 1 MILE
- ▩ AHEAD, 1000 FT, 1500 FT OR 1/2 MILE
- ⊗ Speed To Be Determined By The Engineer
- ⊕ RIGHT OR LEFT
- TYPE "A" LIGHT

Plotted By : \$\$USERNAME\$\$
Plot File : \$\$\$SPEC\$\$\$
Plot Date : \$\$\$SYTIME\$\$\$

3	12-29-05	M4-20 CHANGED TO KM4-20	M.B.	A.A.A.
2	2-1-05	CLARIFIED NOTES, UPDATED WARNING SIGNS	B.H.	A.A.A.
1	9-26-02	REMOVED G20-1 SIGNS	M.H.	S.A.B.
NO.	DATE	REVISIONS	BY	APP'D

KANSAS DEPARTMENT OF TRANSPORTATION
TYPICAL TRAFFIC CONTROL
MULTI-LANE HIGHWAY
TWO LANES CLOSED

TE746SI 9/1/00

DESIGNED	B.A.H.	APP'D	Anthony A. Alrobalre
DESIGN CK.	DETAIL CK.	QUANTITIES	TRACED
DESIGN CK.	DETAIL CK.	QUAN. CK.	TRACE CK.