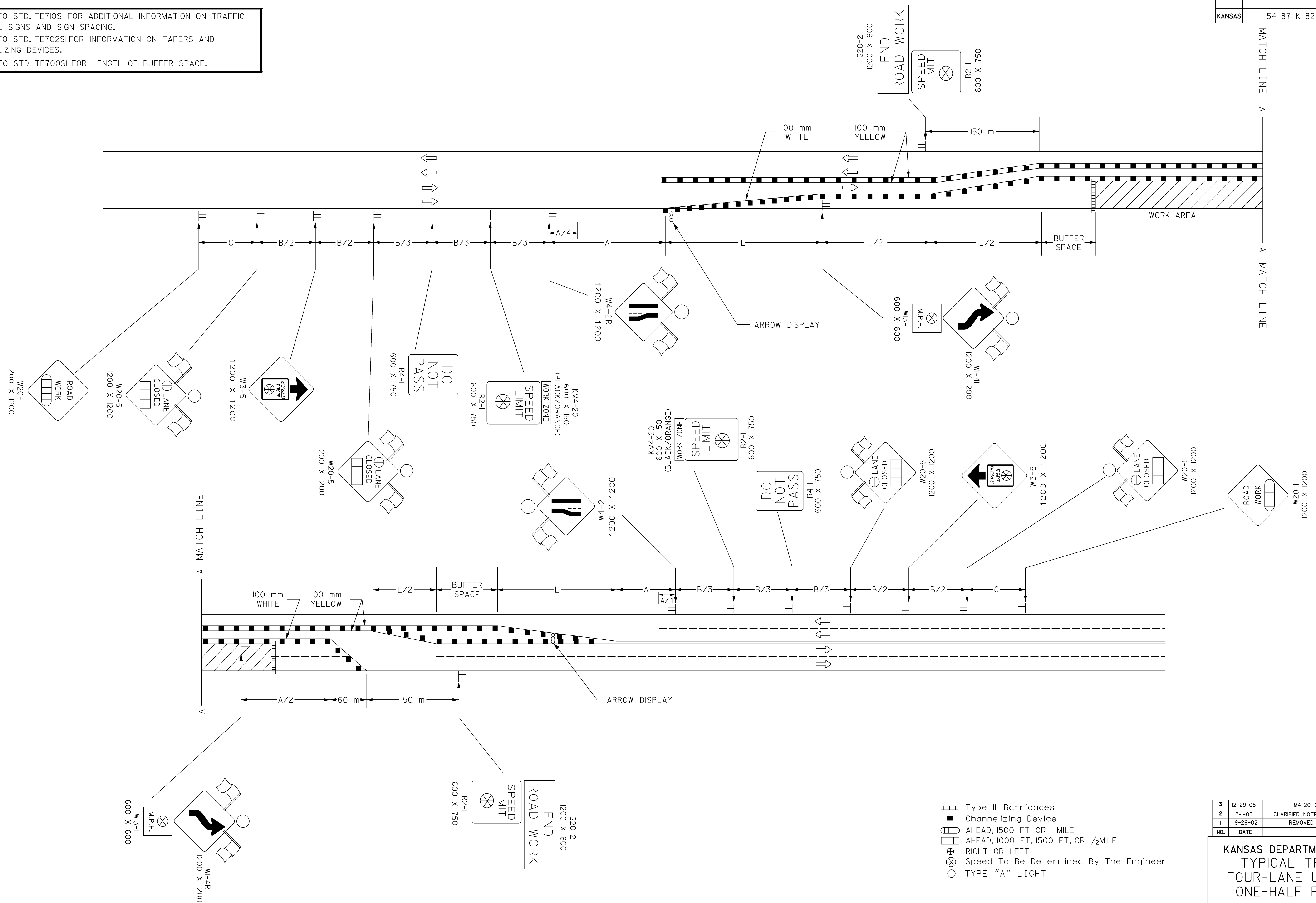


STATE	PROJECT NO.	YEAR	SHEET NO.	TOTAL SHEETS
KANSAS	54-87 K-8258-01	2007	505	556

REFER TO STD. TE705I FOR ADDITIONAL INFORMATION ON TRAFFIC CONTROL SIGNS AND SIGN SPACING.  
REFER TO STD. TE702SI FOR INFORMATION ON TAPERS AND CHANNELIZING DEVICES.  
REFER TO STD. TE700SI FOR LENGTH OF BUFFER SPACE.



- ||| Type III Barricades
- Channelizing Device
- ▬ AHEAD, 1500 FT OR 1 MILE
- ▬ AHEAD, 1000 FT, 1500 FT, OR 1/2 MILE
- ⊕ RIGHT OR LEFT
- ⊗ Speed To Be Determined By The Engineer
- TYPE "A" LIGHT

Plotted By : \$\$USERNAME\$\$  
Plot File : \$\$\$DOWNSPEC\$\$\$  
Plot Date : \$\$\$SYTIME\$\$\$

NO.	DATE	REVISIONS	BY	APP'D
3	12-29-05	M4-20 CHANGED TO KM4-20	M.B.	A.A.A.
2	2-1-05	CLARIFIED NOTES, UPDATED WARNING SIGNS	B.H.	A.A.A.
1	9-26-02	REMOVED G20-1 SIGNS	M.H.	S.A.B.

**KANSAS DEPARTMENT OF TRANSPORTATION**  
**TYPICAL TRAFFIC CONTROL**  
**FOUR-LANE UNDIVIDED HIGHWAY**  
**ONE-HALF ROADWAY CLOSED**  
TE748SI 9/1/00

FHWA APPROVAL	12-29-05	APP'D	Anthony A. Alrobalre
DESIGNED	B.A.H.	DETAILED	B.A.H.
DESIGN CK.	DETAIL CK.	QUANTITIES	QUAN. CK.
		TRACED	TRACE CK.