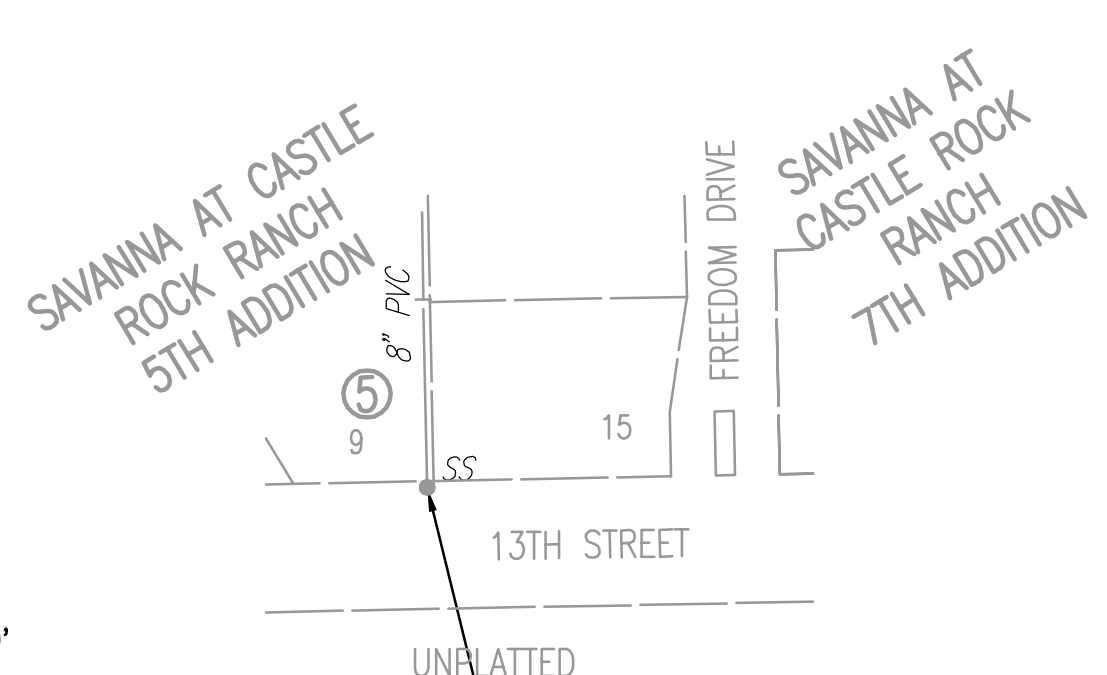


SCALE: 1" = 150'



N-1,694,535.2382, E-1,691,548.0629
 Conc. MH w/Brick Riser
 Remove and Replace Cone, Stack,
 Frame and Lid.
 Exist. MH Elev. = 1351.56
 Prop. MH Elev. = 1351.52
 Difference in elevation = -0.04'

N-1,694,547.3917, E-1,692,195.3035
 Existing Conc. MH w/Brick Riser
 Remove and Replace Cone, Stack,
 Frame and Lid.
 Exist. MH Elev. = 1442.12
 Prop. MH Elev. = 1341.23
 Difference in elevation = -0.89'

N-1,694,565.0077, E-1,693,047.9014
 Existing Conc. MH
 Remove and Replace Frame and Lid.
 Exist. MH Elev. = 1338.73
 Prop. MH Elev. = 1338.26
 Difference in elevation = -0.47'

N-1,694,507.0839, E-1,693,109.1331
 Record Information
 Exist. MH Elev. = 1332.7
 Prop. Ground Elev. = 1333.42
 Adjust MH top to: 1333.82
 Difference in elevation = +1.12'
 Manhole Adjustment shall be paid for at the
 contract unit price per each.

N-1,694,534.5579, E-1,693,095.1684
 Existing Conc. MH w/2' Conc. Riser
 Exist. MH Elev. = 1335.15
 (Prop. Ground Elev. = 1339.06)
 Adjust MH top to: 1339.46
 Difference in elevation = +4.31'
 Manhole Adjustment shall be paid for at the
 contract unit price per each.

N-1,694,756.1620, E-1,698,746.2933
 Existing MH
 Exist. MH Elev. = 1357.74
 (Prop. Ground Elev. = 1356.47)
 Adjust MH top to: 1356.87
 Difference in elevation = -0.87'
 Manhole Adjustment shall be paid for at the
 contract unit price per each.

N-1,694,528.1772, E-1,691,187.6190
 Exist. MH Elev. = 1349.99
 Adjust MH top to: 1350.26
 Difference in elevation = +0.27'
 Manhole Adjustment shall be paid for at the
 contract unit price per each.

N-1,694,541.9669, E-1,691,886.6294
 Existing Brick MH
 Remove and Replace Cone, Stack,
 Frame and Lid.
 Exist. MH Elev. = 1344.82
 Prop. MH Elev. = 1346.19
 Difference in elevation = +1.37'

N-1,694,563.0330, E-1,692,813.4859
 Existing Brick MH
 Reconstruct MH using 4' Dia. Precast Manhole. Manhole lid shall
 be positioned outside of proposed curb and gutter. Contractor
 shall remove existing manhole in its entirety including base. All
 cost, including any by-pass pumping, shall be included in the
 Contract Unit Price Bid Per Each for "Reconstruct 4' Dia. MH".
 Exist. MH Elev. = 1338.12
 Prop. MH Elev. = 1338.83
 Difference in elevation = +0.71'
 [In=1325.72 18"
 [Out=1325.70 18"

N-1,694,564.8247, E-1,693,066.4581
 Existing Brick MH
 Reconstruct MH using 5' Dia. Precast MH with Eccentric Cone.
 Manhole lid shall be positioned outside of proposed curb and
 gutter. Contractor shall remove existing manhole in its entirety
 including base. All cost, including any by-pass pumping, shall be
 included in the contract unit price bid per each for "Reconstruct
 5' Dia. MH".
 Exist. MH Elev. = 1338.31
 Prop. MH Elev. = 1338.21
 Difference in elevation = -0.10'
 [In=1325.66 18" (W)
 [Out=1325.59 18" (ESE)

N-1,694,553.6228, E-1,692,504.0036
 Existing MH w/Brick Riser
 Reconstruct MH using 5' Dia. Precast MH with Eccentric Cone.
 Manhole lid shall be positioned outside of proposed curb and
 gutter. Contractor shall remove existing manhole in its entirety
 including base. All cost, including any by-pass pumping, shall be
 included in the contract unit price bid per each for "Reconstruct
 5' Dia. MH".
 Exist. MH Elev. = 1339.80
 Prop. MH Elev. = 1340.00
 Difference in elevation = +0.20'
 [In=1325.96 18"
 [Out=1325.96 18"

GENERAL NOTES

- ALL CONSTRUCTION AND MATERIALS TO COMPLY WITH CITY OF WICHITA SPECIFICATIONS AND STANDARDS.
- ALL ELEVATIONS SHOWN ARE USGS DATUM.
- THE CONTRACTOR SHALL LIMIT THE EXTENT OF TRENCH TO REMAIN OPEN OVERNIGHT AND WEEKENDS TO LESS THAN 50 FEET.
- AT LEAST 72 HOURS PRIOR TO BEGINNING EXCAVATION (EXCLUDING WEEKENDS AND HOLIDAYS), THE CONTRACTOR SHALL CONTACT THE KANSAS ONE-CALL SYSTEM, A UTILITY LOCATION SERVICE, AT (316) 687-2470 TO REQUEST THE LOCAL UTILITY COMPANIES MARK ANY EXISTING LINES WITHIN THE PROJECT AREA.
- UNDERGROUND UTILITY SERVICE LINES AND OVERHEAD UTILITY POLE LINES ARE TO BE ADJUSTED AS NECESSARY BY OTHERS PRIOR TO CONSTRUCTION UNLESS THE PLANS SPECIFICALLY CALL FOR THEIR ADJUSTMENT BY THE CONTRACTOR OR UNLESS THE PLANS SPECIFICALLY IDENTIFY A UTILITY TO BE ADJUSTED BY ITS OWNER DURING CONSTRUCTION. EXISTING UTILITIES AND THEIR LOCATIONS, AS SHOWN ON THE PLANS, REPRESENT THE BEST INFORMATION OBTAINABLE FOR THE DESIGN. THE CONTRACTOR WILL BE REQUIRED TO WORK AROUND EXISTING UTILITIES WITHIN THE RIGHT-OF-WAY WHICH DO NOT CONFLICT WITH PROPOSED CONSTRUCTION.
- THE CONTRACTOR SHALL BE RESPONSIBLE FOR PRESERVING PROPERTY IRONS. THE CONTRACTOR WILL BE REQUIRED TO RE-ESTABLISH ANY PROPERTY IRONS WHICH ARE DAMAGED OR DESTROYED BY HIS CONSTRUCTION OPERATIONS. SUCH IRONS SHALL BE RE-ESTABLISHED BY A LICENSED LAND SURVEYOR IN ACCORDANCE WITH STATE LAWS. ALL COSTS FOR THIS WORK SHALL BE SUBSIDIARY TO THE LUMP SUM PRICE BID FOR "SITE RESTORATION".
- CONTRACTOR SHALL PROVIDE POSITIVE DRAINAGE AWAY FROM ALL MANHOLE COVERS.
- MANHOLES SHALL BE TYPE "F" MANHOLES. MANHOLES SHALL BE CONSTRUCTED IN ACCORDANCE WITH THE STANDARD SPECIFICATIONS AND THE STANDARD DETAIL DRAWINGS.
- RUBBLE FROM THE REMOVAL OF MISCELLANEOUS STRUCTURES INCLUDING ANY TREES REMOVED, TREE TRIMMINGS, AND EXCESS EXCAVATION WHICH IS TO BE WASTED SHALL BE DISPOSED OF ON SITES PROVIDED BY THE CONTRACTOR. THESE SITES SHALL ALSO BE APPROVED BY THE ENGINEER AS TO SUITABILITY, APPEARANCE, AND SITE LOCATION. LOCATIONS THAT, IN THE OPINION OF THE ENGINEER, WILL LEAVE AN UNSIGHTLY APPEARANCE WILL NOT BE APPROVED. ALL DISPOSAL SITES MUST BE APPROVED BY THE KANSAS DEPARTMENT OF HEALTH AND ENVIRONMENT. MATERIAL EITHER STOCKPILED OR DISPOSED OF IN A FLOOD PLAIN WILL REQUIRE A KANSAS STATE BOARD OF AGRICULTURE PERMIT. ANY MATERIAL DUMPED IN WATERS OF THE UNITED STATES OR WETLANDS IS SUBJECT TO U.S. CORPS. OF ENGINEERS PERMITTING REGULATIONS. ANY MATERIAL BURIED OR STOCKPILED BEYOND APPROVED CONSTRUCTION LIMITS MAY REQUIRE ARCHAEOLOGICAL INVESTIGATIONS UNLESS BURIED IN A PREVIOUSLY APPROVED DISPOSAL LOCATION.
- THE CONTRACTOR SHALL AVOID REMOVAL OR TRIMMING OF ANY TREES OR SHRUBS OUTSIDE OF CONSTRUCTION LIMITS OF PART 1 PROJECT WHERE POSSIBLE. WHERE THE CONTRACTOR BELIEVES THE REMOVAL OR TRIMMING IS UNAVOIDABLE, HE SHALL COORDINATE SUCH WORK WITH THE ENGINEER. COSTS FOR TREE/SHRUB REMOVAL AND TRIMMING REGARDLESS OF SIZE SHALL BE CONSIDERED SUBSIDIARY TO THE LUMP SUM PRICE BID FOR "SITE CLEARING".
- THE CONTRACTOR SHALL PREVENT ANY CONSTRUCTION DEBRIS FROM ENTERING THE EXISTING SANITARY SEWER DURING CONSTRUCTION.
- THE CONTRACTOR SHALL GIVE ALL PROPERTY OWNERS AND/OR TENANTS OF DEVELOPED PROPERTY ABUTTING THE CONSTRUCTION OF THIS PROJECT A MINIMUM OF TEN (10) DAYS ADVANCE NOTICE PRIOR TO START OF CONSTRUCTION.
- CONTRACTOR IS REQUIRED TO MAINTAIN CONTINUOUS FLOW OF SEWAGE IN EXISTING MAINS AT ALL TIMES.
- THE CONTRACTOR SHALL SEED ALL AREAS DISTURBED BY CONSTRUCTION ACTIVITIES WITH TEMPORARY RYE GRASS. RYE GRASS SEED SHALL BE PLANTED AT A MINIMUM RATE OF SIX (6) POUNDS PER ONE THOUSAND (1,000) SQUARE FEET. THIS TEMPORARY SEEDING MAY BE OMITTED ONLY IF OTHER SEEDING IS REQUIRED IN ACCORDANCE WITH PART 1 IMPROVEMENTS. TEMPORARY SEEDING OR PERMANENT SEEDING/SODDING SHALL BE APPLIED WITHIN 14 DAYS AFTER THE AREA HAS BEEN DISTURBED.
- THE CONTRACTOR SHALL NOT BURY MANHOLES THAT HAVE RIM ELEVATIONS WHICH ARE LOWER THAN EXISTING GROUND AT THE MANHOLE. THE GROUND AROUND SUCH MANHOLES AND ALONG THE SEWER ALIGNMENT SHALL BE BACKFILLED TO THE APPROXIMATE ELEVATION OF THE PROPOSED GROUND ELEVATION SHOWN ON THE PLAN/PROFILE SHEETS. THE CONTRACTOR SHALL PROVIDE DRAINAGE AWAY FROM THESE MANHOLES AND SEWER LINES BY CONSTRUCTION OF TEMPORARY DITCHES OR SLOPING THE GROUND AS REQUIRED. ALL COSTS FOR THIS WORK SHALL BE CONSIDERED SUBSIDIARY TO THE INSTALLED BID PRICE FOR MANHOLES OR PIPE.
- THE CONTRACTOR SHALL PROVIDE MOUNDING EARTH AT MANHOLES AND CLEANOUTS AS SHOWN ON THE PLANS. COSTS FOR MOUNDING SHALL BE CONSIDERED SUBSIDIARY TO THE PRICE BID PER EACH FOR MANHOLES. COMPACTION REQUIREMENTS FOR MOUNDS SHALL BE THE SAME AS TRENCH BACKFILL REQUIREMENTS.
- PIPES SHOWN IN THE PLANS TO BE ABANDONED IN PLACE SHALL BE SAND FILLED AND PLUGGED IN ACCORDANCE WITH CITY OF WICHITA STANDARD SPECIFICATIONS.
- INTERURBAN TRAFFIC GENERATED OUTSIDE THE PROJECT AREA AND LOCAL BUSINESS OR RESIDENTIAL TRAFFIC GENERATED WITHIN THE PROJECT AREA ARE TO BE CARRIED THROUGH CONSTRUCTION AS FURTHER PROMULGATED BY PROJECT SPECIAL PROVISIONS. THE CONTRACTOR SHALL UTILIZE BARRICADES, SIGNS, GUARDS, AND FLAGMEN IN ACCORDANCE WITH THE MANUAL ON UNIFORM TRAFFIC CONTROL DEVICES. ADDITIONAL TRAFFIC CONTROL DEVICES NOT SHOWN IN PART 1 WHICH ARE NEEDED TO COMPLETE CONSTRUCTION OF PART 3 SHALL BE CONSIDERED SUBSIDIARY TO THE LUMP SUM BID FOR "TRAFFIC CONTROL" IN PART 1 BID.
- IF THE ABANDONED 12" FORCE MAIN FROM 13TH STREET NORTH @ STA. 241+50 TO @ STA. 275+95 IS IN CONFLICT OR DAMAGED DURING CONSTRUCTION, THE CONTRACTOR SHALL REMOVE ALL NECESSARY PIPE AND PLUG EACH END.
- TEMPORARY ASPHALT SHALL BE KDOT STANDARD "PLANT MIX BITUMINOUS MIXTURE (COMMERCIAL GRADE)". THE CONTRACTOR SHALL INSTALL TEMPORARY ASPHALT TO A MINIMUM DEPTH OF 6".
- THE CONTRACTOR MUST OBTAIN A COPY OF THE APPROVED SEDGWICK COUNTY "UTILITY PERMIT AGREEMENT" FOR "USE OF PUBLIC ROAD RIGHT-OF-WAY" PRIOR TO THE START OF CONSTRUCTION. SEE PROJECT SPECIAL PROVISIONS FOR ADDITIONAL INFORMATION. PERMIT WILL BE OBTAINED BY THE CITY.
- THE CONTRACTOR MUST OBTAIN A COPY OF THE APPROVED "DIVISION OF WATER RESOURCES PERMIT FOR STREAM OBSTRUCTIONS" PRIOR TO THE START OF CONSTRUCTION. THE CONTRACTOR SHALL MEET ALL REQUIREMENTS AS SET FORTH IN THE DWR PERMIT. ALL COSTS ASSOCIATED WITH MEETING PERMIT REQUIREMENTS SHALL BE SUBSIDIARY TO THE PROJECT. PERMIT WILL BE OBTAINED BY THE CITY.
- EROSION CONTROL (BMP'S) THE CONTRACTOR SHALL INSTALL AND/OR MAINTAIN EROSION CONTROL METHODS AS SPECIFIED ON SHEETS 10-12. THE GENERAL LOCATION OF THE REQUIRED EROSION CONTROL IS ILLUSTRATED ON THE PLAN/PROFILE SHEETS. THE SANITARY SEWER CONTRACTOR SHALL BE RESPONSIBLE FOR MAINTAINING THE EROSION CONTROL SHOWN THROUGH THE COMPLETION OF THIS PROJECT. INSTALLATION OF THESE BMP'S DOES NOT RELIEVE THE CONTRACTOR OF THE RESPONSIBILITY OF ABATING SOIL EROSION.

NOTE: PART 2 CONTRACTOR SHALL BE RESPONSIBLE FOR FINAL ADJUSTMENTS OF MANHOLE TOPS. THIS WORK SHALL BE COORDINATED WITH PART 1 CONSTRUCTION. MANHOLE FRAMES AND COVERS IN PAVEMENT SHALL BE SLOPED TO MATCH SLOPE ON PROPOSED PAVEMENT. CONTRACTOR SHALL ADJUST COLLARS TO PROVIDE SLOPE FOR FRAME AND COVER.

Saved 03-09-2006 3:37:06 PM by RFT
 Plot Scale: 1"=150' 03-09-2006 5:13:41 PM by REJ
 J:\SEWERN\2006\0310\2006-03-09 to City\Sanitary Sewer\02-KeyMap

No.	Revision	By	Date
MAIN 17B OF THE FOUR MILE CREEK SEWER KEY MAP AND GENERAL NOTES JAMES L. ARMOUR, P.E. - CITY ENGINEER CITY OF WICHITA PROJECT NO. 468-84136 Professional Engineering Consultants, P.A. 303 S. TOPEKA • WICHITA, KANSAS 67202 316-262-2691 • FAX 316-262-3003			
Designed by	MDK	Job No.35-00310-001-042	Sh. 2 of 12
Drawn by	AEE	Date November 2005	