

SANITARY SEWER EXTENSION

TO SERVE LOT 19, BROMILOW'S SOUTH BROADWAY ADDITION
PRIVATE PROJECT NUMBER 1507 PPS (607861)

As Built Plans:

CONTRACTOR: Boardman Exc.

INSPECTOR: Larry Gann

COMPANY: K E Miller Engineering

.PDF by: NWS, 10-30-08

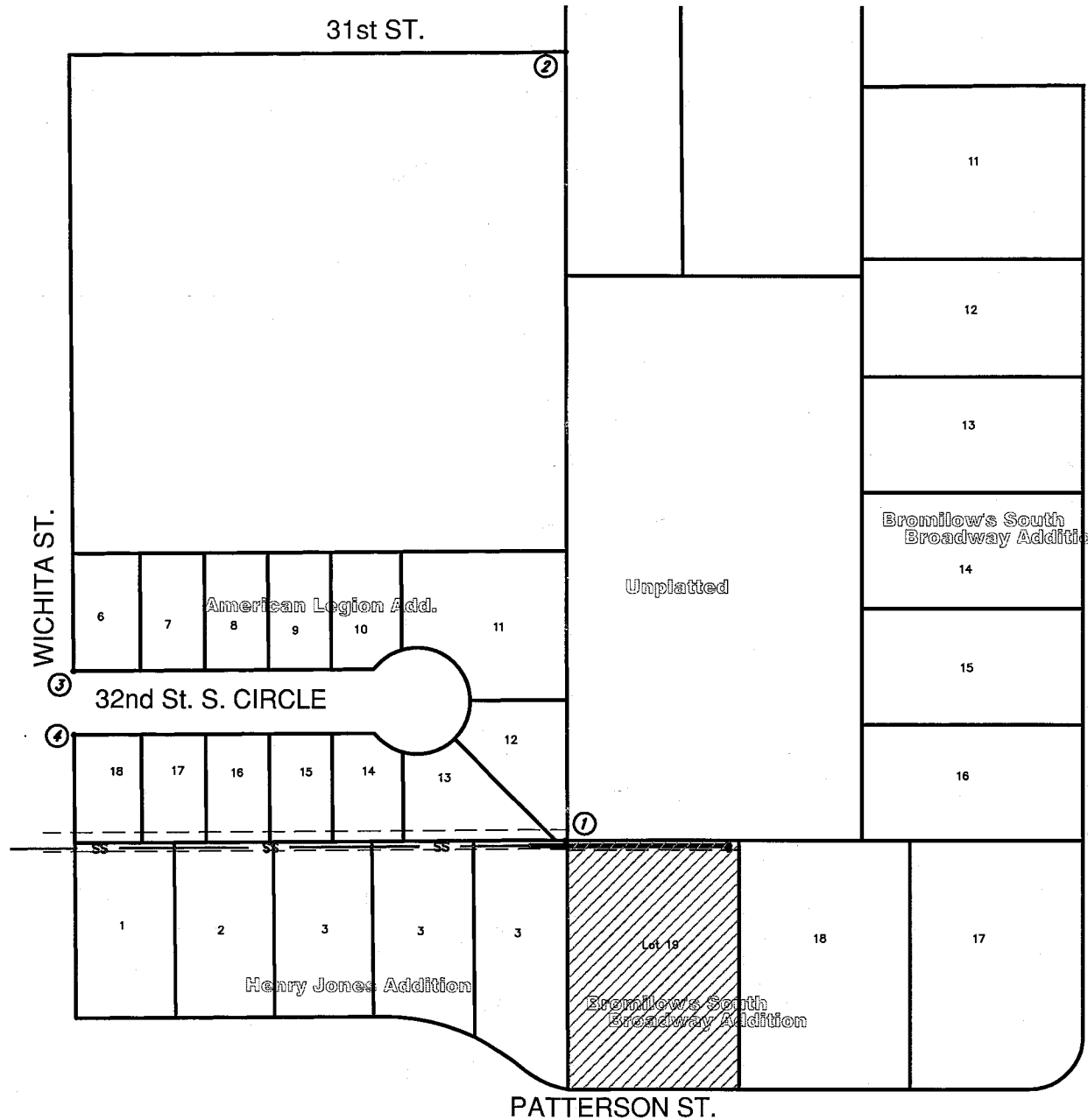
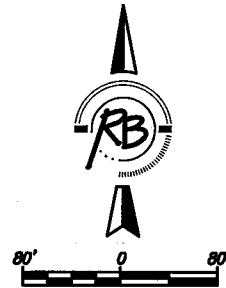
GENERAL NOTES

- Contractor will be required to provide a minimum advance notice of forty-eight (48) hours to utility companies prior to starting any excavation as follows:

Kansas One-Call 687-2470

The Contractor must notify the following in case of an emergency:

Cox Communications 262-0861
Kansas Gas Service 1-888-482-4950
Westar 383-8600
Aquila Energy 1-800-303-0357
AT&T 268-2245
City of Wichita Water Utility 262-6000
- Existing utilities and their location, as shown on the plans, represent the best information obtainable for design. Location information has been obtained from the various utility companies and is either from company record drawings or company-provided field locations. The Contractor will be required to work around existing utilities within the right-of-way which do not conflict with proposed construction.
- This project is to be constructed in accordance with City of Wichita Standard Specifications for the Construction of City Projects, and Policy on Construction of Infrastructure Improvements by Private Contract.
- No work shall begin on this project before required bonds are submitted to the City of Wichita, and the project inspector has been notified.
- The Contractor shall give all property owners and/or tenants of developed property directly abutting the construction of this project a minimum of ten (10) days advance notice prior to start of construction.
- All areas of public R/W disturbed by construction of this project are to be restored in accordance with Administrative Regulation AR6.5 of the City of Wichita.
- Sewage flow in the existing sanitary sewer shall be maintained at all times. The Contractor's plan for maintaining flow shall be submitted and approved by the Engineer prior to beginning work on the project.
- Traffic will not be affected by this project.



IMPROVEMENT DISTRICT

INDEX OF SHEETS

- INDEX SHEET
- LINE 1 PLAN & PROFILE
- SHALLOW TYPE 'P' MANHOLE DETAIL
- PLAT

BENCHMARKS

- BM #1 Broadway and 31st St. South
COW Bench Mark. Brass Disc.
43.70 ft West of centerline of Broadway
45.00 ft North of centerline of 31st St. South
ELEV. 1280.70 NGVD 29
- BM #2 S. RM MH @
STA 0+00
ELEV. 1281.71 NGVD 29

APPROVED AS NOTED
BY CITY ENGINEER OF WICHITA

Sanitary Sewer *Julianne Kallman 9-3-08*

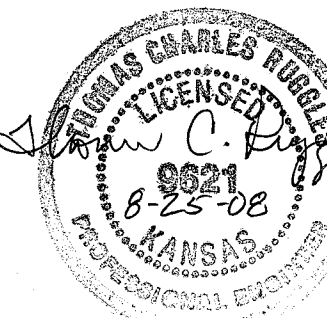
Storm Sewer _____

Driveway Approaches _____

Water Mains _____

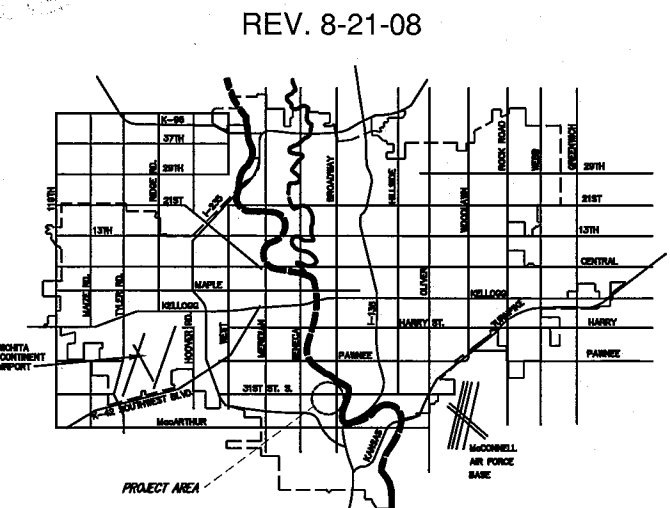
Paving _____

NOTE TO CONTRACTORS
Inspection and testing for this project are to be provided by a Licensed Consulting Engineering Firm under contract with the Owner/Developer. Said inspection to be in accordance with the City of Wichita standard construction engineering practices and certified by a Licensed Professional Engineer. No work shall be performed in dedicated easements or public right-of-way by the Contractor without such inspection, nor shall any work be commenced without written authorization by the City Engineer.



COORDINATE CONTROL TABLE

CONTROL NO.	DESCRIPTION	NORTHING	EASTING
①	ARM 5/8"	20000.00	20000.00
②	2 1/2" P	20741.83	20000.00
③	1/2" P	20158.19	19538.36
④	1/2" P	20088.25	19538.79



CITY OF WICHITA, KANSAS
JAMES L. ARMOUR, P.E., CITY ENGINEER

Ruggles & Bohm, P.A.
Engineering, Surveying, Land Planning

924 North Main (316) 264-8008
Wichita, Kansas 67203 (316) 264-4621 fax
www.rbkansas.com E-mail: info@rbkansas.com