

SEE REVISED SHEET

STA. 10+00.00 TO
STA. 10+14.7, FM
CONST. LIFT STATION,
PIPING, AND 59 S.Y.
OF 6" THICK GRAVEL
ACCESS DRIVE (SEE
SHEET 2)

STA. 10+20.0 TO
STA. 10+85.0, FM
60 L.F. OF 2" PIPE
BY DIRECT DRILL

STA. 11+34.3, FM
1-2" 90° BEND

STA. 15+51.3, FM
1-2" 45° BEND

STA. 18+24.9, FM
PROVIDE CONNECTION
TO EXISTING MANHOLE

EXISTING SSMH
MH TOP=1302.76
FL OUT=1297.06 (8"E)

5.4' OF 2" PIPE
SIM PARK DR.
PROP. 8" WATER

59.7' OF 2" PIPE

COW TOWN

367.6' OF 2" PIPE

REMOVE AND REPLACE EXIST.
SIDEWALK TO THE NEAREST
JOINT AS NECESSARY FOR
CONSTRUCTION. COST
SUBSIDIARY TO PROJECT.

STA. 15+01.9, FM
1-2" 30° BEND

49.4' OF 2" PIPE

FORCE MAIN

COW TOWN

CAUTION!!
UNDERGROUND
UTILITIES

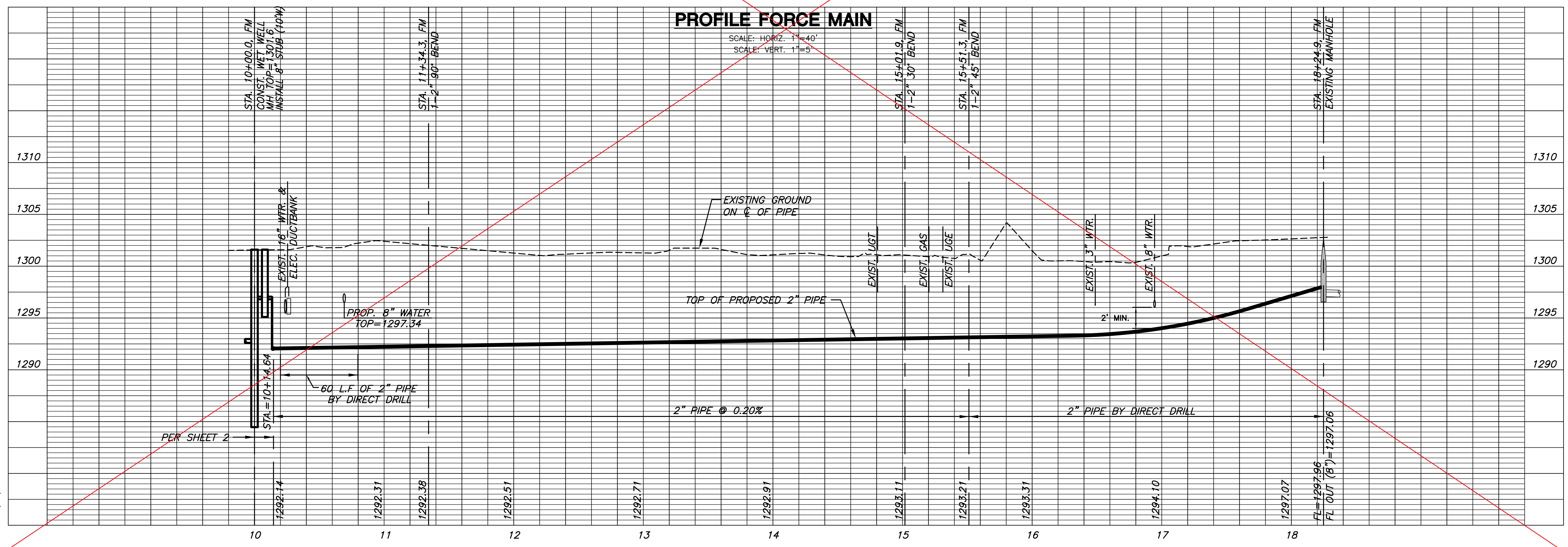
273.6' OF 2" PIPE
BY DIRECT DRILL

- NOTES:**
1. CONTRACTOR TO VERIFY DEPTH AND LOCATION OF EXISTING UTILITIES PRIOR TO CONSTRUCTION.
 2. CONTRACTOR TO MAINTAIN PEDESTRIAN ACCESS TO COW TOWN AT ALL TIMES DURING CONSTRUCTION. COST SUBSIDIARY TO PROJECT.

PLAN FORCE MAIN

PROFILE FORCE MAIN

SCALE: HORIZ. 1"=40'
SCALE: VERT. 1"=5'



PLOTTED: Tuesday, July 06, 2010 @ 03:11PM

J:\CIVIL\08603\WORK\SAN\FORCE MAIN\08603_FM.DWG