

**SANITARY SEWER LIFT STATION AND FORCE MAIN  
BOTANICA - THE WICHITA GARDENS  
STREETS AND UTILITIES**

**ELECTRICAL  
SITE PLAN**  
SHEET TITLE  
468-84683  
PROJECT NUMBER

BWB | JJB | BWB  
DESIGNED | DRAWN | CHECKED

ISSUED  
July 2010  
REVISED

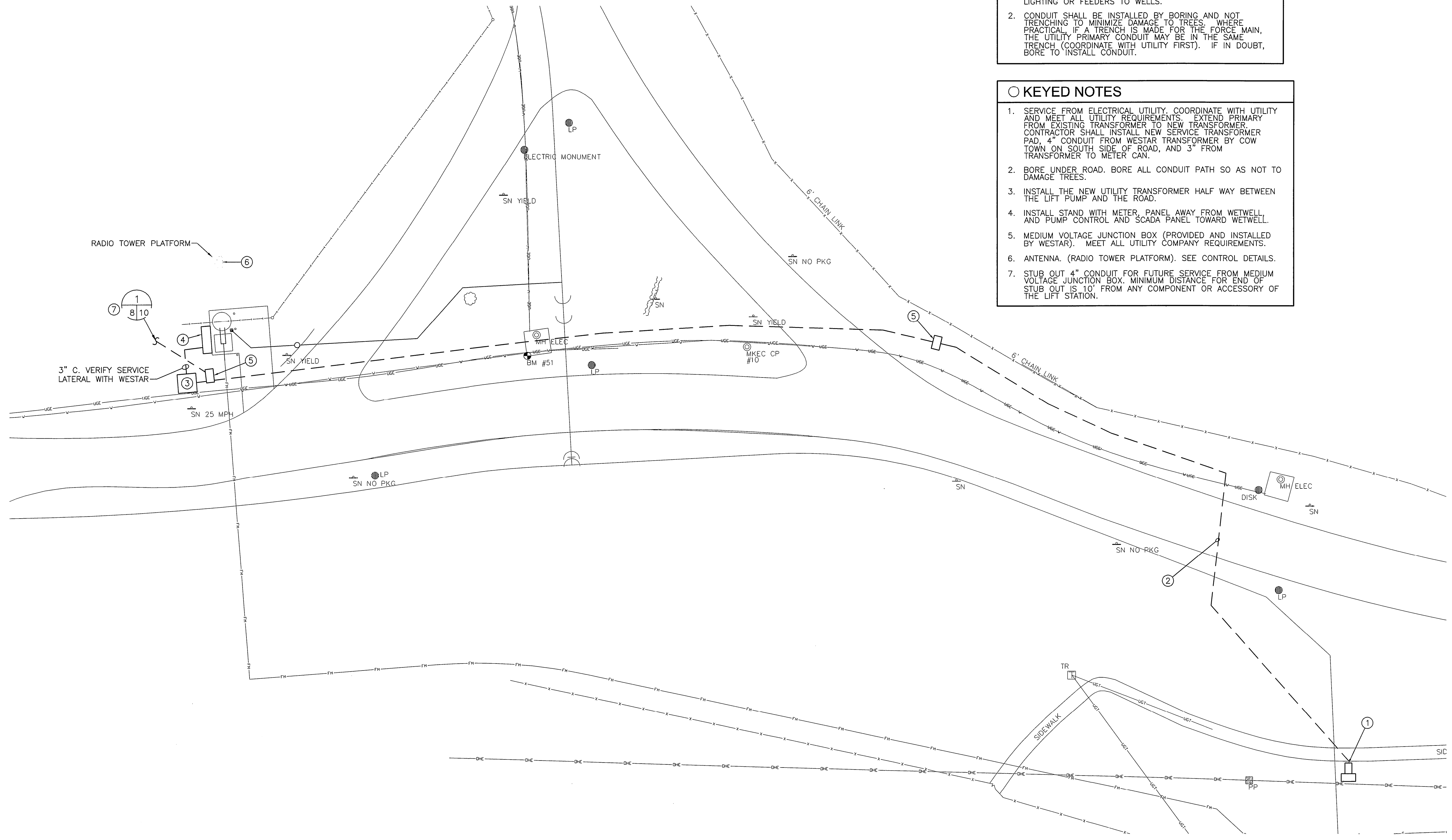
SHEET NO.  
**8 of 29**

**GENERAL NOTES**

- IMPORTANT: MAKE SURE THAT WICHITA WATER UTILITY (ALSO CALLED "FILTER PLANT") IS INCLUDED IN ONECALL FOR MARKING UNDERGROUND UTILITIES. DO NOT CUT LINES TO WELLS, LIGHTS ETCETERA. LINES MARKED "UGE" ON THE PLAN AS EXISTING, ARE NOT WESTAR. THEY MAY BE LIGHTING OR FEEDERS TO WELLS.
- CONDUIT SHALL BE INSTALLED BY BORING AND NOT TRENCHING TO MINIMIZE DAMAGE TO TREES. WHERE PRACTICAL, IF A TRENCH IS MADE FOR THE FORCE MAIN, THE UTILITY PRIMARY CONDUIT MAY BE IN THE SAME TRENCH (COORDINATE WITH UTILITY FIRST). IF IN DOUBT, BORE TO INSTALL CONDUIT.

**KEYED NOTES**

- SERVICE FROM ELECTRICAL UTILITY. COORDINATE WITH UTILITY AND MEET ALL UTILITY REQUIREMENTS. EXTEND PRIMARY FROM EXISTING TRANSFORMER TO NEW TRANSFORMER. CONTRACTOR SHALL INSTALL NEW SERVICE TRANSFORMER PAD. 4" CONDUIT FROM WESTAR TRANSFORMER BY COW TOWN ON SOUTH SIDE OF ROAD, AND 3" FROM TRANSFORMER TO METER CAN.
- BORE UNDER ROAD. BORE ALL CONDUIT PATH SO AS NOT TO DAMAGE TREES.
- INSTALL THE NEW UTILITY TRANSFORMER HALF WAY BETWEEN THE LIFT PUMP AND THE ROAD.
- INSTALL STAND WITH METER, PANEL AWAY FROM WETWELL AND PUMP CONTROL AND SCADA PANEL TOWARD WETWELL.
- MEDIUM VOLTAGE JUNCTION BOX (PROVIDED AND INSTALLED BY WESTAR). MEET ALL UTILITY COMPANY REQUIREMENTS.
- ANTENNA. (RADIO TOWER PLATFORM). SEE CONTROL DETAILS.
- STUB OUT 4" CONDUIT FOR FUTURE SERVICE FROM MEDIUM VOLTAGE JUNCTION BOX. MINIMUM DISTANCE FOR END OF STUB OUT IS 10' FROM ANY COMPONENT OR ACCESSORY OF THE LIFT STATION.



**ELECTRICAL SITE PLAN**  
SCALE: 1" = 20'-0"