

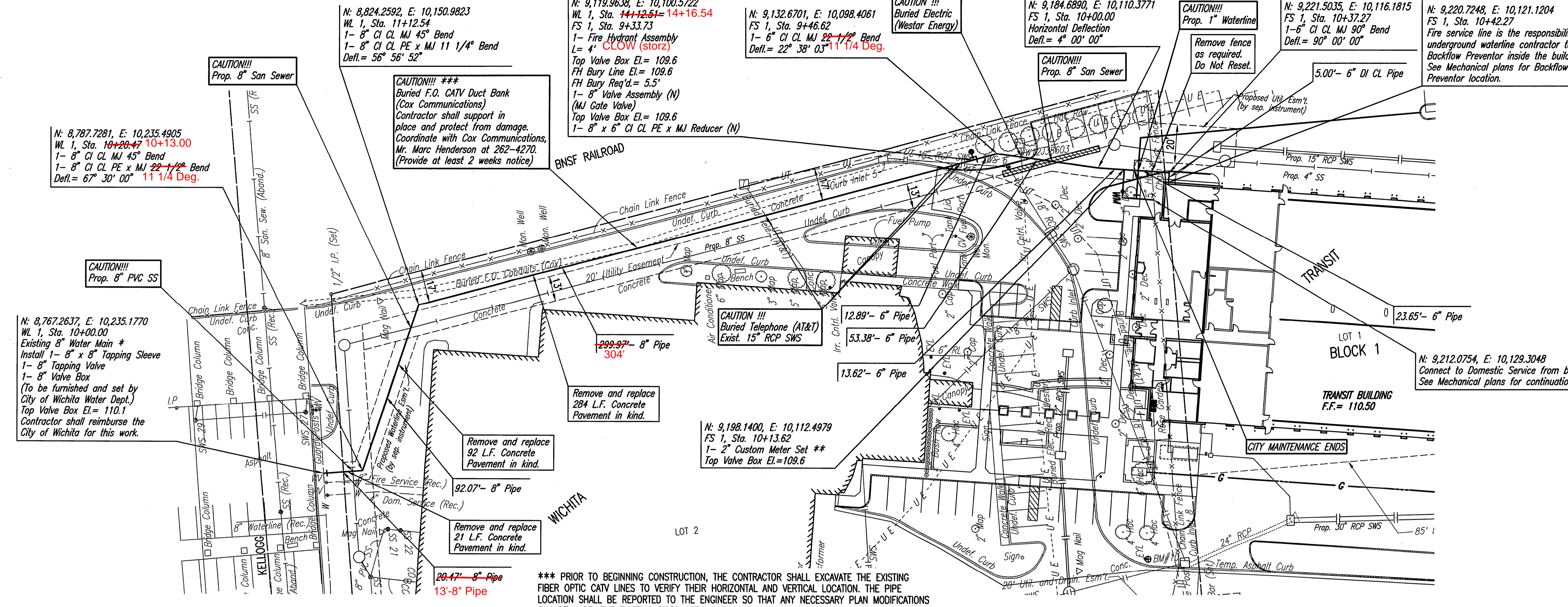
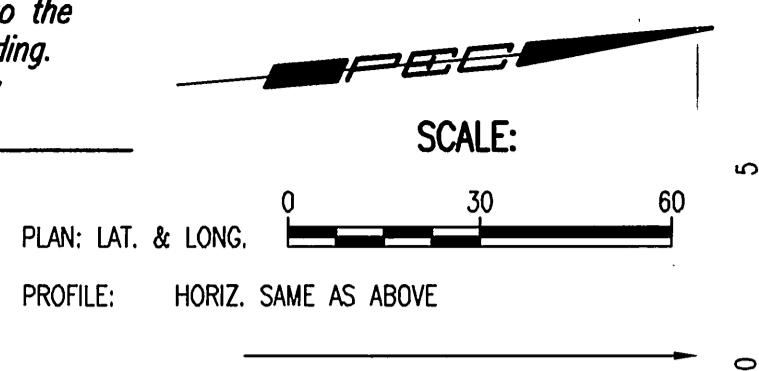
CITY OF WICHITA
TRANSIT VAN MAINTENANCE / STORAGE FACILITY PROJECT
 Wichita, Kansas

CITY OF WICHITA PRIVATE PROJECT NO. 1520 PPW (607853)

109045
 DATE: 01/29/2010

REVISIONS
 1 4/23/10 WL/SS ALIGNMENT
 2 5/06/10 WL FH/FDC RELOC. & ESMT UPDATE

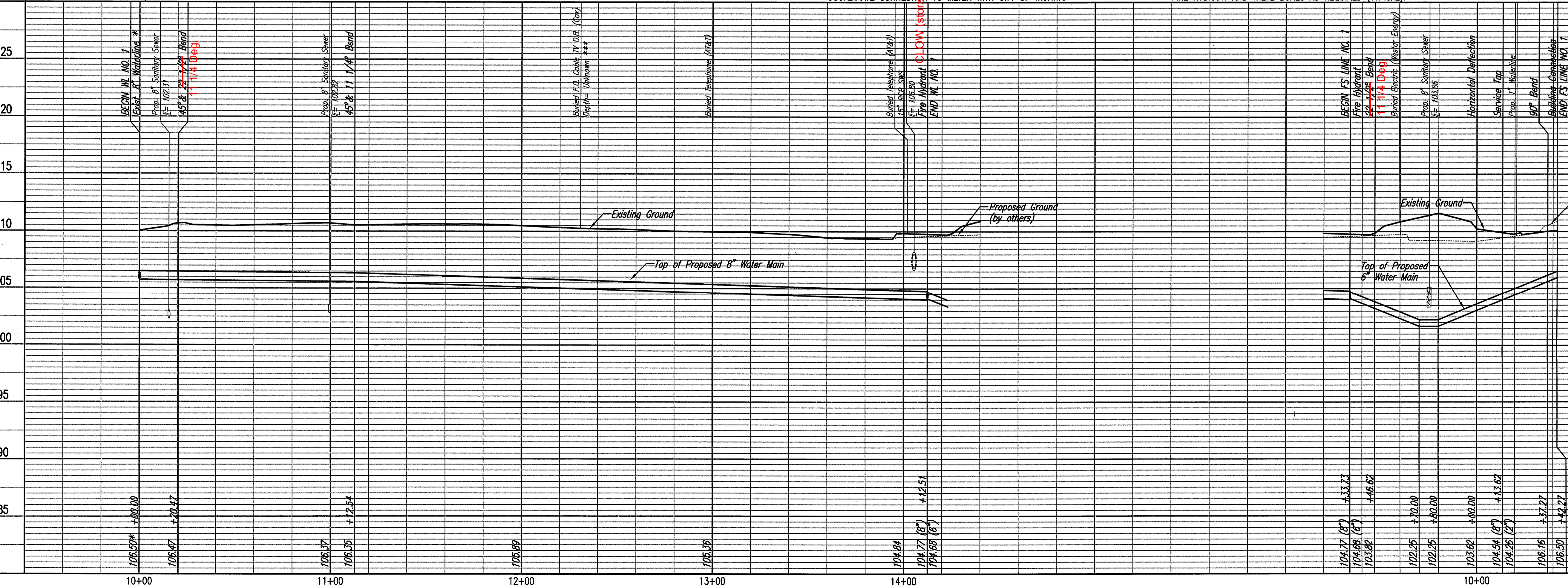
CV2.4



*** PRIOR TO BEGINNING CONSTRUCTION, THE CONTRACTOR SHALL EXCAVATE THE EXISTING 8\"/>**

**** THE CONTRACTOR SHALL SCHEDULE WITH THE CITY OF WICHITA WATER UTILITIES TO PERFORM THE WORK FOR 2\"/>**

NOTE:
 PRIOR TO BEGINNING CONSTRUCTION, THE CONTRACTOR SHALL VERIFY FINAL GRADES WITH THE GRADING PLAN AND ADJUST PROPOSED FIRE HYDRANT AND VALVE BOXES AS REQUIRED (TYPICAL).



Save: 05-06-2010 1:56:04 PM by: JLM
 Plot Scale: 1:30 05-06-2010 1:59:07 PM by: JLM
 03/2009/0860A/000/PPW/Revision 2.05-05-10/0860A-000-C-PPW/PPW



Professional Engineering Consultants, P.A.
 Wichita, Kansas
 License No. 116-068-001-1-10316-200-800