

BENCHMARK:
 BM #6: Square cut "□" on the South Side of the Concrete Base of the HLP.
 Elev. = 1353.29 (NAVD 88)
 BM #7: Railroad Spike in the West Face of Guy Pole North of Sanitary Sewer Manhole Near 135th Street West.
 Elev. = 1357.05

N-11474.19, E-24559.78
 Sta. 32+34.31, SS Line 1
 Match Point

Sta.33+36.58, Line 1
 Depth = 28.95
 No. of joints wrapped = 2

N-11460.45, E-24661.12
 Sta. 33+36.58, SS Line 1
 Construct Standard Type "P" Manhole (5' Dia.) w/ Liner.
 Top Elev = 1354.62
 Begin Boring & Jacking of 30" (Min. ID) Steel Casing Pipe (.312 Min. Wall Thickness).

Trees in this Area to be Removed Only as Necessary for the Sewer Line Construction.

AT - 10
 Roberta A. Whetzel
 2401 N 135th Street W
 N-11382.14, E-24883.71
 Sta. 35+71.98, SS Line 1
 Construct Inside Drop Type "P" Manhole (5' Dia.) w/ Liner.
 Install 1-8" Stub (N) & Cap.
 Top Elev = 1354.96
 End Bore & Jacking of 30" (Min. ID) Steel Casing Pipe.

Sta.35+71.98, Line 1
 Depth = 29.96'
 No. of joints wrapped = 2

Install 120 L.F. of Silt Fence as Shown per City Specs.

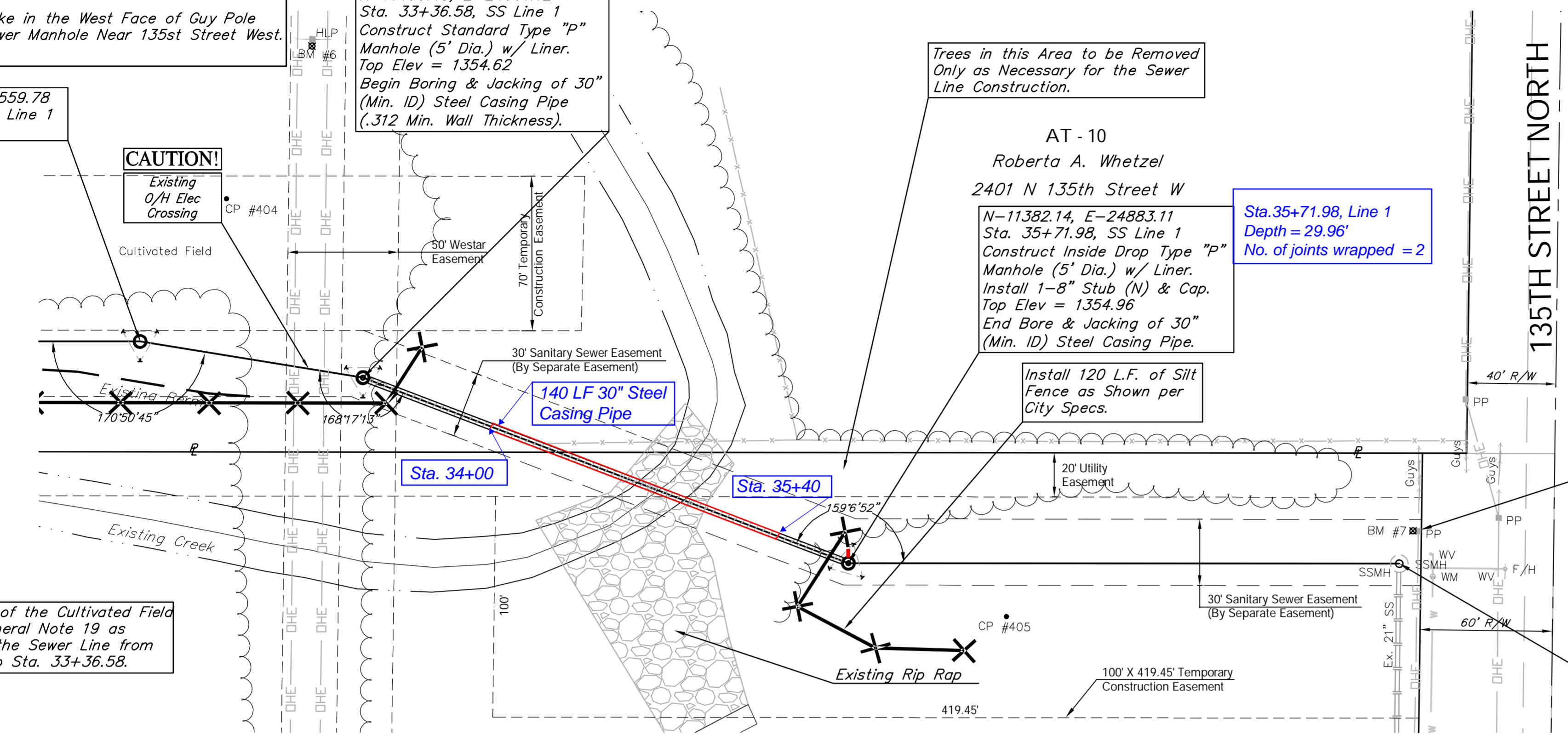
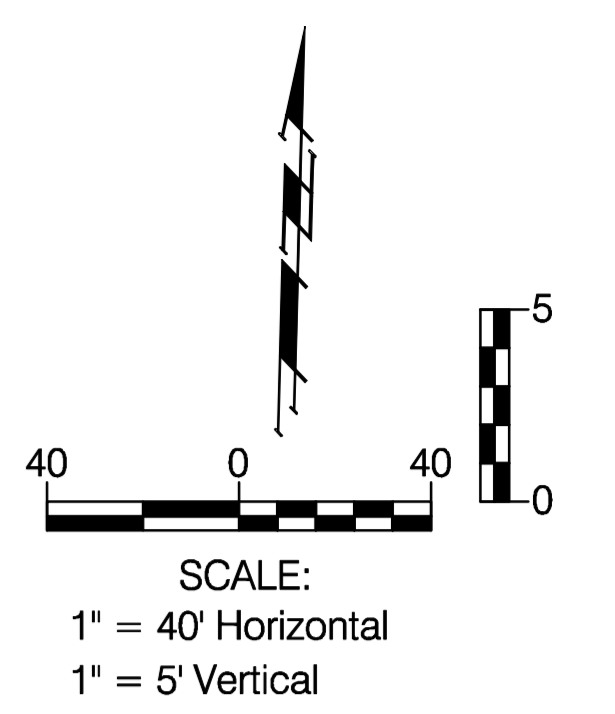
The Inside Drop Manholes shall be constructed with an IntraFlow Low-Profile Inside Drop System. The system shall be attached to the manhole walls with Hilti Epoxy Anchors.

The Ex. Power Pole Shall Not be Disturbed During Construction. The Contractor Shall Contact Scott Ayres with the Sedgwick County Electric Cooperative Association at (316) 542-3131 Prior to Beginning the Project.

Reseed 250 L.F. According to General Note 18 as Measured along the Sewer Line from Sta. 35+71.98 to Sta. 38+21.15.

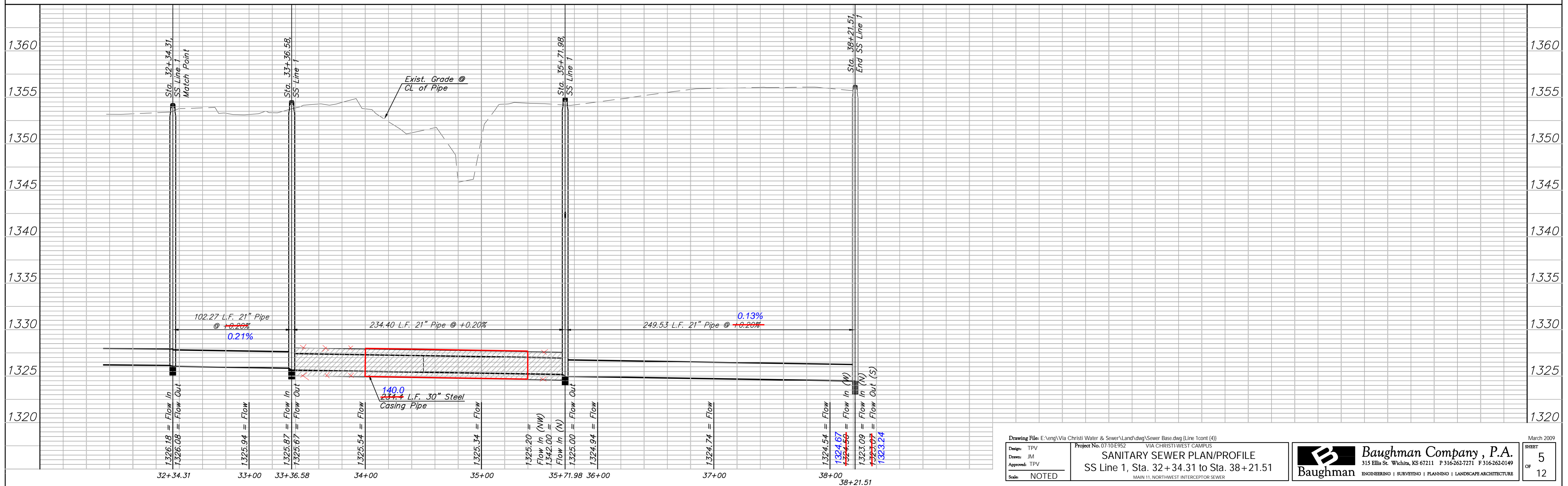
Reseed 137 L.F. of the Cultivated Field According to General Note 19 as Measured along the Sewer Line from Sta. 32+34.31 to Sta. 33+36.58.

The Contractor shall contact Dale Lee at (785) 575-8154 or Greg Roy at (785) 575-8167 with Westar Transmission prior to crossing or working near the Westar Transmission Line



LINE 1

NORTH WEST YMCA ADDITION
 Reserve "A"



Drawing File: E:\eng\Via Christi Water & Sewer\Land\dwg\Sewer Base.dwg (Line 1cont (4))
 Design: TPV
 Drawn: JM
 Approved: TPV
 Scale: NOTED
 Project No. 0710E952
 VIA CHRISTI WEST CAMPUS
SANITARY SEWER PLAN/PROFILE
 SS Line 1, Sta. 32+34.31 to Sta. 38+21.51
 MAIN 11, NORTHWEST INTERCEPTOR SEWER

Baughman Company, P.A.
 315 Ellis St. Wichita, KS 67211 P 316-262-7271 F 316-262-0149
 ENGINEERING | SURVEYING | PLANNING | LANDSCAPE ARCHITECTURE