

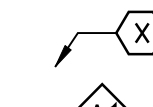

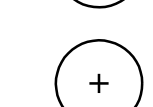

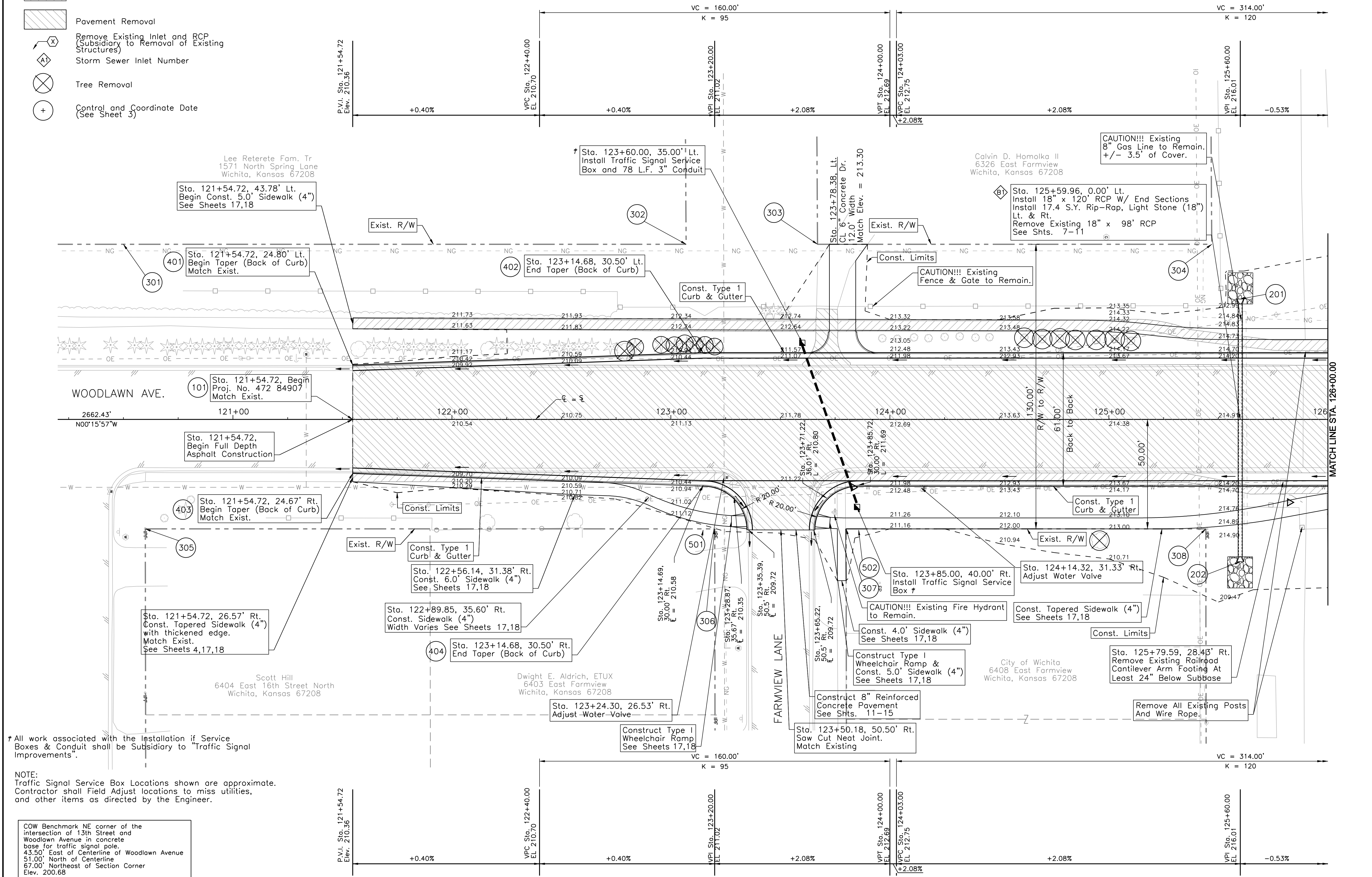
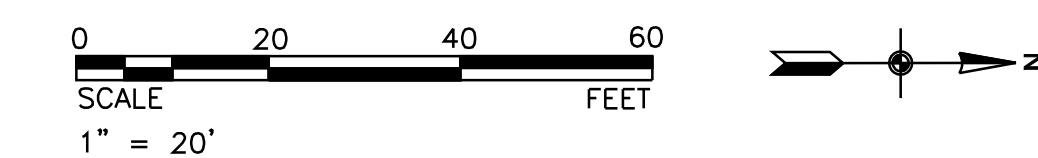


LEGEND

-  Sidewalk Removal
-  Pavement Removal
-  Remove Existing Inlet and RCP (Subsidiary to Removal of Existing Structures)
-  Storm Sewer Inlet Number
-  Tree Removal
-  Control and Coordinate Date (See Sheet 3)



NOTE:
Traffic Signal Service Box Locations shown are approximate. Contractor shall Field Adjust locations to miss utilities, and other items as directed by the Engineer.

COW Benchmark NE corner of the intersection of 13th Street and Woodlawn Avenue in concrete base for traffic signal pole. 43.50' East of Centerline of Woodlawn Avenue 51.00' North of Centerline 67.00' Northeast of Section Corner Elev. 200.68

Tran Systems
245 NORTH WACO
SUITE 222
WICHITA, KANSAS 67202
PHONE: 316-303-3000
FAX: 316-303-0156

CONSULTANTS:
WOODLAWN AVENUE & 17TH STREET/FARMVIEW LANE INTERSECTION IMPROVEMENTS
WICHITA, KANSAS

REVISIONS:	MARK	DATE	DESCRIPTION

PROJ NO: 472 84907
SCALE: 1" = 20'
DATE: 8/10/2010
DESIGNED BY: SGE
DRAWN BY: SGE
CHECKED BY: JRL

SHEET TITLE:
PLAN SHEET STA. 121+54.72 TO STA. 126+00.00

SHEET NO.
5

SHEET 5 OF 50