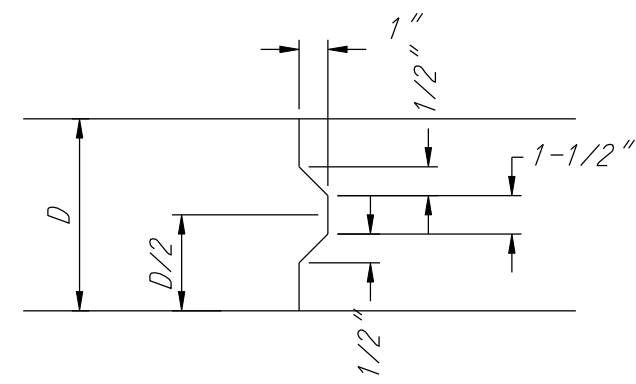
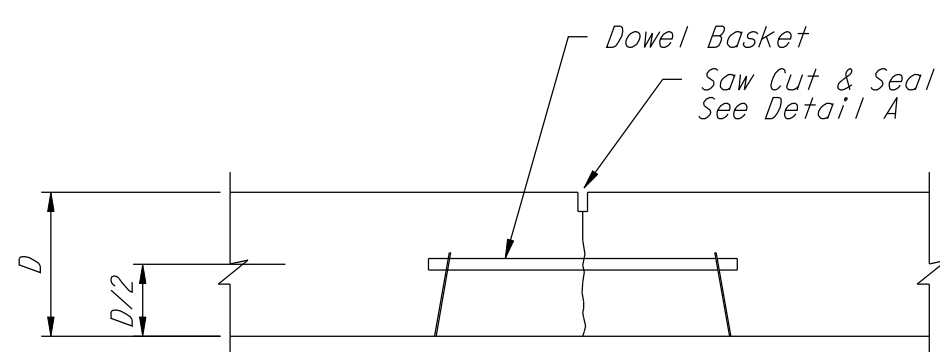


**EXPANSION JOINT**

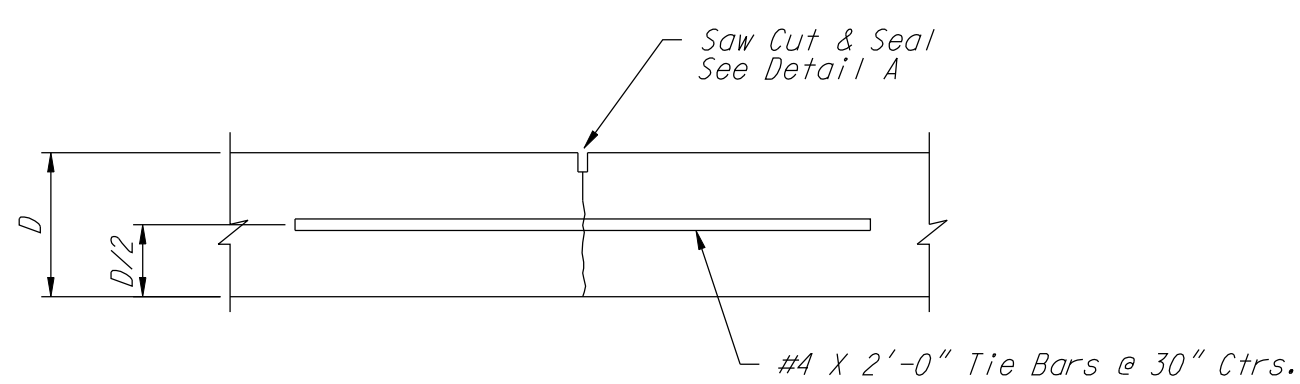
NOTE: Extra Thickness to be Subsidiary to Price of Square Yards Pavement



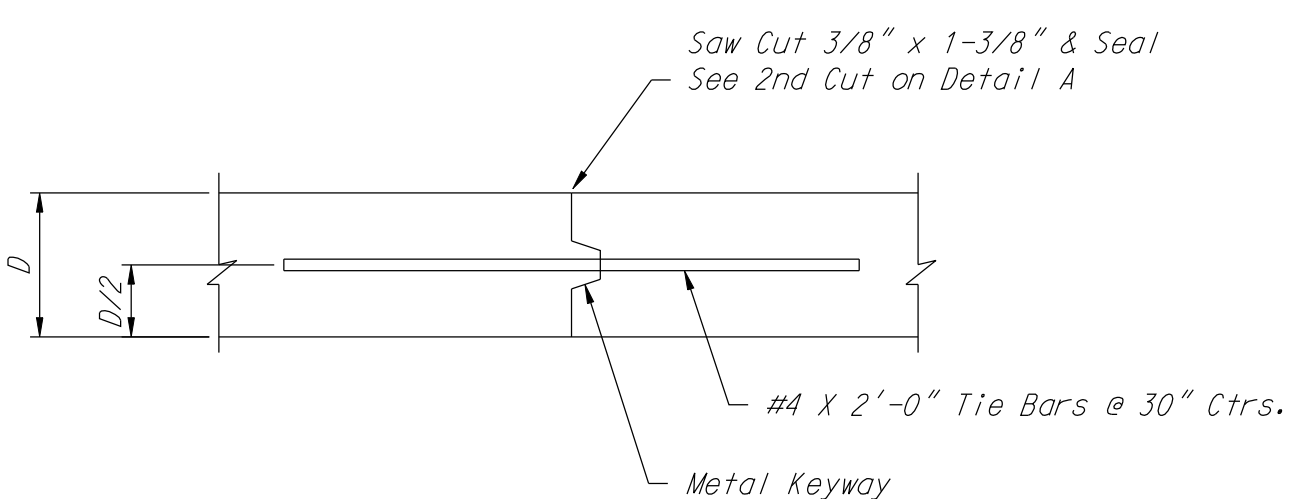
**KEYWAY DETAIL**



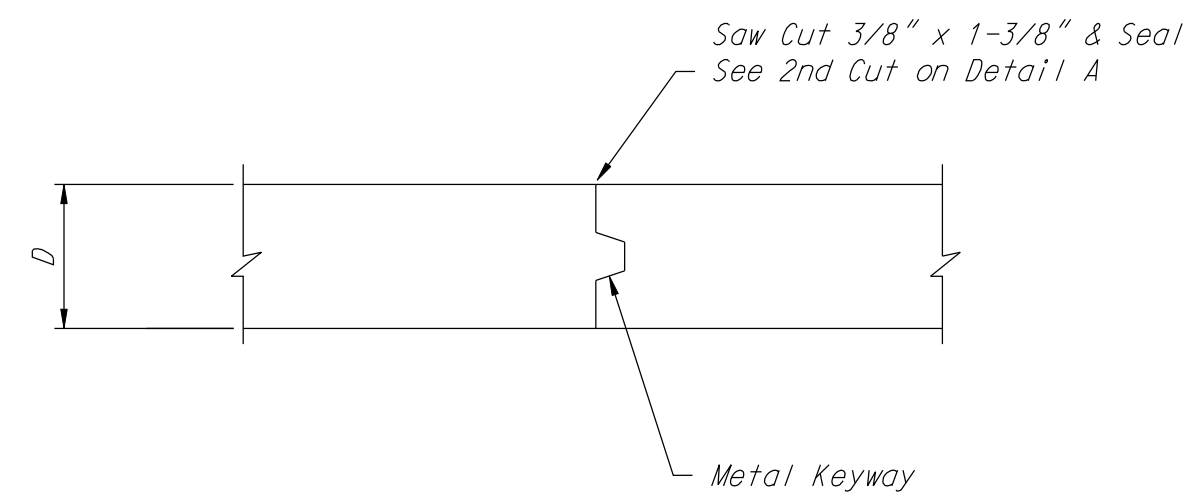
**CONTRACTION JOINT DETAIL (C.J.)**



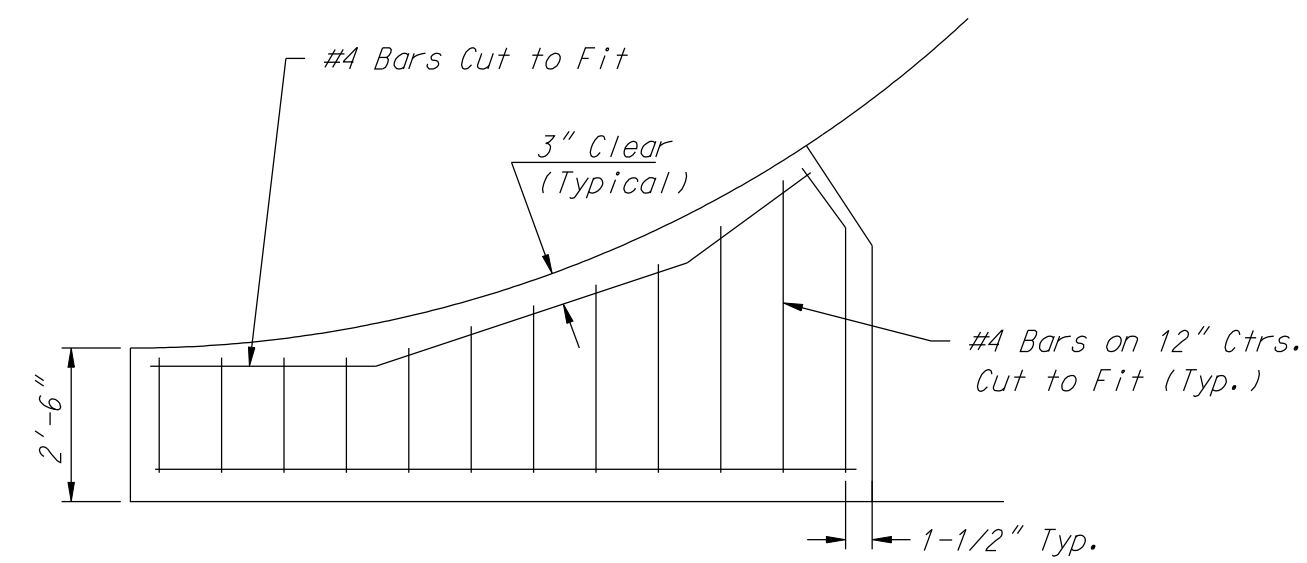
**LONGITUDINAL JOINT DETAIL (L.J.)**



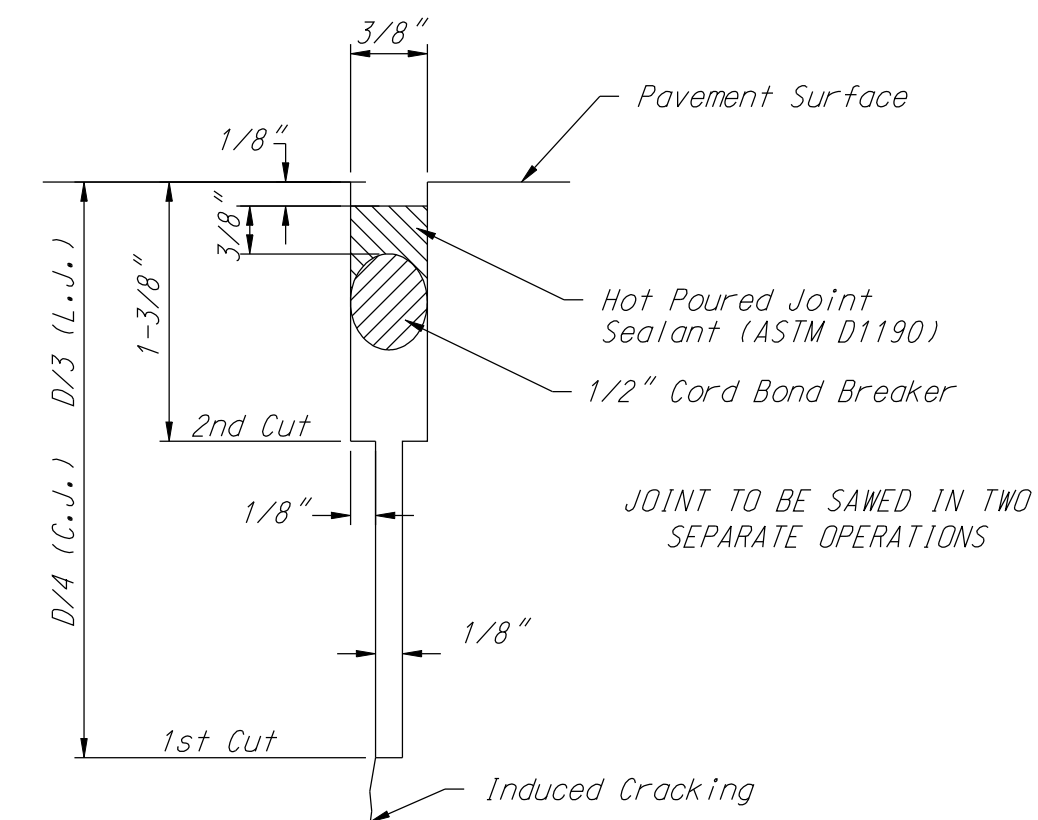
**OPTIONAL LONGITUDINAL JOINT DETAIL (L.J.)**



**OPTIONAL CONTRACTION JOINT**

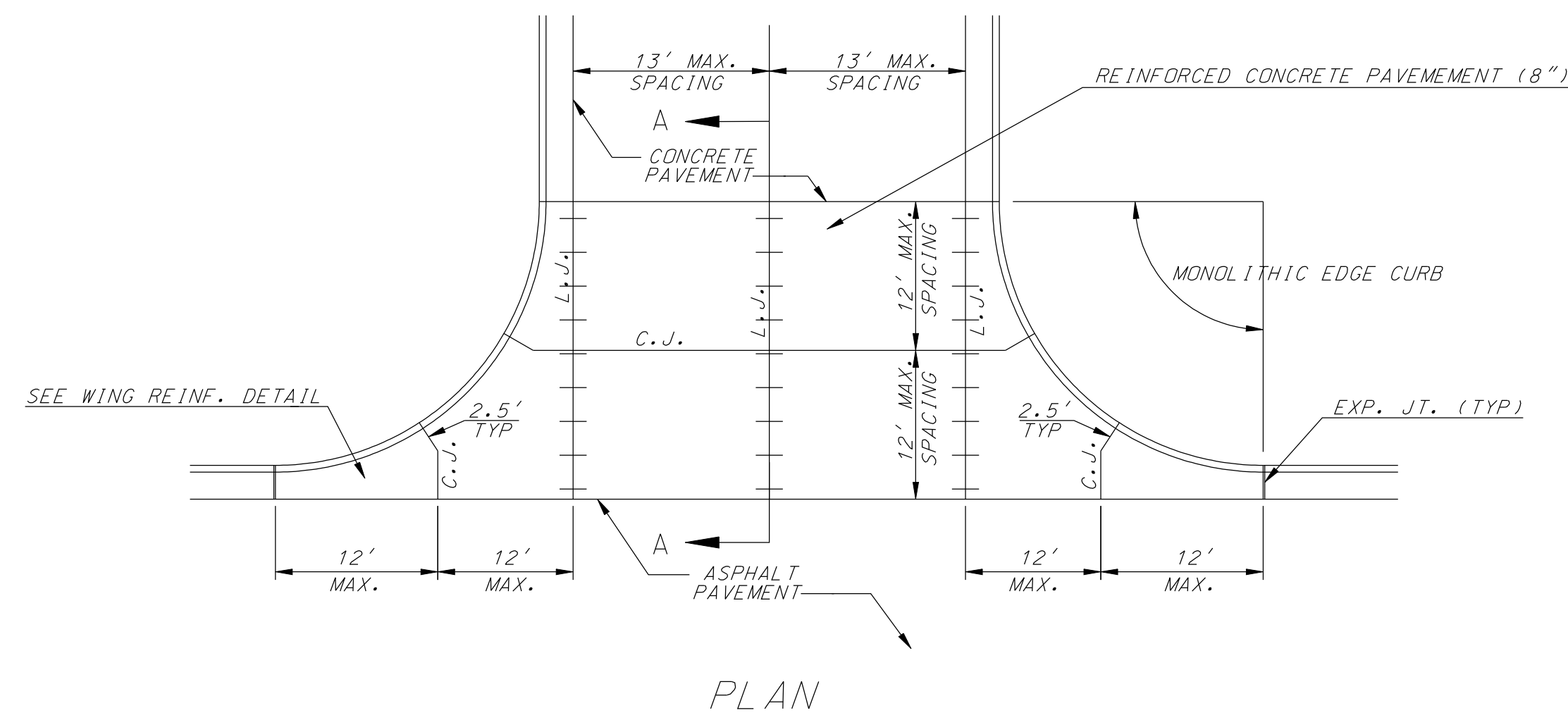


**WING REINFORCING DETAIL**

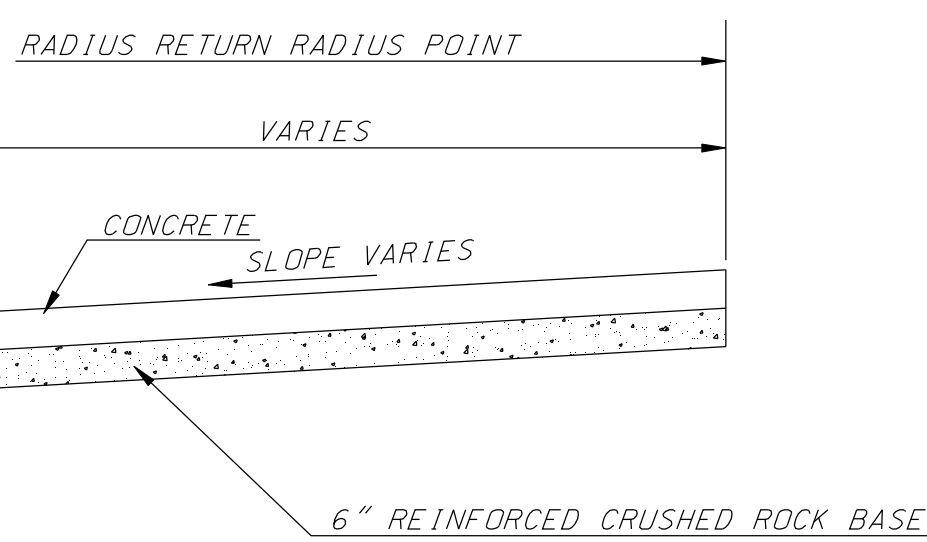


**SAW JOINT DETAIL**

NOTE:  
1. CONTRACTION JOINTS WILL HAVE DOWEL BASKETS.



**REINFORCED CONCRETE PAVEMENT (8") DETAIL**



**SECTION A-A**

FILES\$

<p>THE CITY OF WICHITA</p> <p>CITY ENGINEER'S OFFICE CITY HALL - SEVENTH FLOOR 455 NORTH MAIN STREET WICHITA, KANSAS 67202 (316) 268-4501 (316) 268-4114 FAX</p>	<b>REINFORCED CONCRETE PAVEMENT DETAIL</b>	
	JAMES L. ARMOUR, P.E. - CITY ENGINEER	
	PROJECT NUMBER 472 84907	INDEX CODE XXXXXX
	DATE MAR 96	15 of 50