

STORM WATER SEWER #658

PHASE 2

TO SERVE


WATERFRONT RESIDENTIAL ADDITION

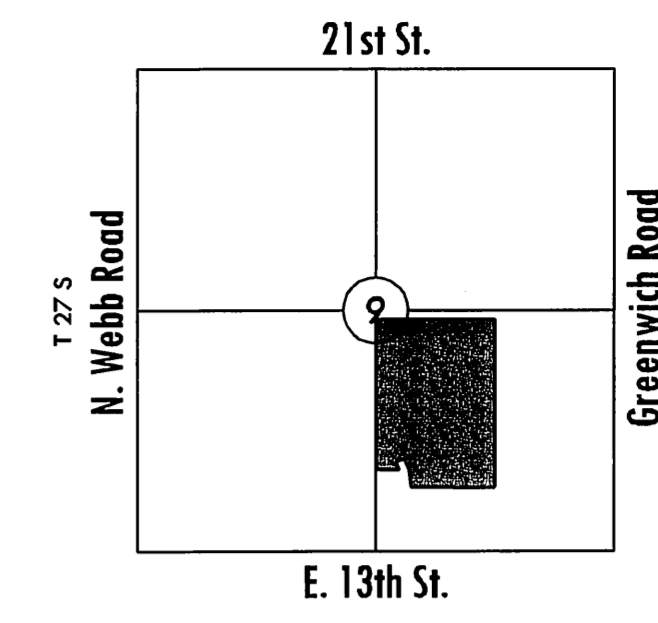
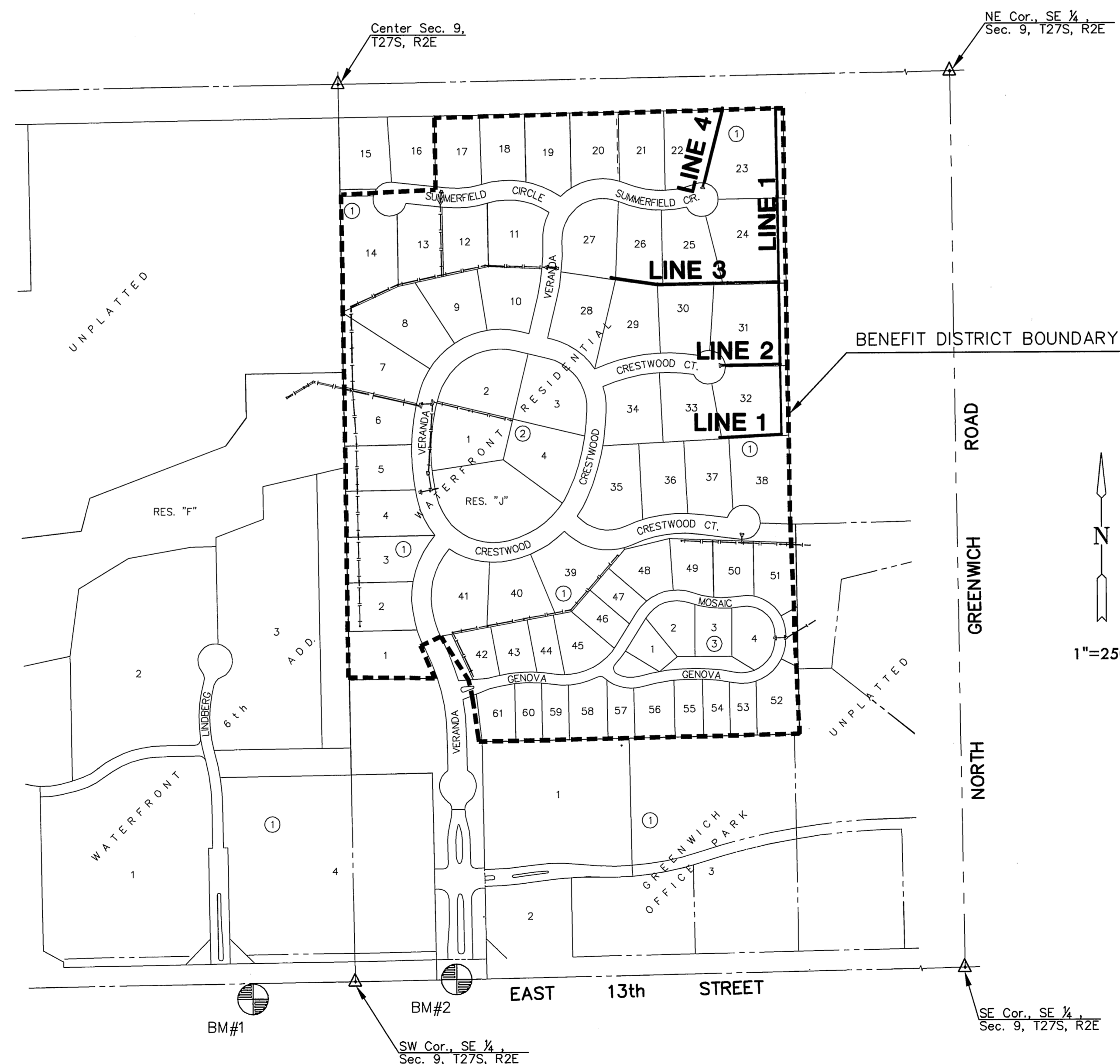
PROJECT NO. 468-84682

THE CITY OF WICHITA, KANSAS
JAMES L. ARMOUR, CITY ENGINEER

OCA NO. 751491

GENERAL NOTES

- UNLESS SHOWN OR OTHERWISE STATED ON THESE DRAWINGS, MATERIALS AND CONSTRUCTION SHALL BE IN ACCORDANCE WITH THE CITY OF WICHITA STANDARD SPECIFICATIONS.
 - THE TOPS OF INLETS AND MANHOLES AS NOTED ON THE PLANS MAY VARY SO AS TO MEET PROPOSED TOP OF CURB ELEVATIONS OR PAVEMENT ELEVATIONS. THE FIELD ENGINEER SHALL LOCATE INLETS AND MANHOLES WITH REFERENCE TO PROPOSED PAVING PLANS OF THE PERTINENT STREETS.
 - ALL CONCRETE SHALL BE STANDARD PAVING MIX UNLESS OTHERWISE NOTED.
 - THE CONTRACTOR SHALL BE RESPONSIBLE FOR PRESERVING PROPERTY IRONS. THE CONTRACTOR SHALL BE REQUIRED TO RE-ESTABLISH ANY PROPERTY IRONS WHICH ARE DAMAGED OR DESTROYED BY HIS CONSTRUCTION OPERATIONS. SUCH IRONS SHALL BE RE-ESTABLISHED BY A LICENSED LAND SURVEYOR IN ACCORDANCE WITH STATE LAWS.
 - TREES TO BE REMOVED ARE MARKED . ALL TREES WHICH IN THE OPINION OF THE FIELD ENGINEER CAN BE SAVED, SHALL BE SAVED.
 - CONTRACTOR SHALL NOTIFY UTILITY COMPANIES OF CONSTRUCTION SCHEDULING.
 - EXISTING UTILITIES AND THEIR LOCATIONS, AS SHOWN ON THE PLANS REPRESENT THE BEST INFORMATION OBTAINABLE FOR DESIGN. LOCATION INFORMATION HAS BEEN OBTAINED FROM THE VARIOUS COMPANIES AND IS EITHER FROM COMPANY UTILITY DRAWINGS OR COMPANY PROVIDED FIELD LOCATIONS. THE PLAN LOCATIONS SHOWN ARE NOT GUARANTEED. ADDITIONAL EXISTING UTILITIES MAY ALSO BE ENCOUNTERED.
 - CONTRACTOR WILL BE REQUIRED TO PROVIDE A MINIMUM ADVANCE NOTICE OF SEVENTY-TWO (72) HOURS TO UTILITY COMPANIES TO STARTING ANY EXCAVATION AS FOLLOWS:
KANSAS ONE-CALL 800-344-7233
OR 687-2470 (LOCAL WICHITA)
- THE CONTRACTOR MUST NOTIFY THE FOLLOWING IN CASE OF EMERGENCY:
- | | |
|-------------------------------|--------------|
| COX COMMUNICATIONS (CABLE) | 262-0661 |
| WESTAR (ELECTRIC) | 261-6512 |
| KANSAS GAS SERVICE (GAS) | 832-3101 |
| SBC (TELEPHONE) | 800-870-8390 |
| CITY OF WICHITA WATER & SEWER | 262-6000 |
| AQUILA (GAS) | 800-303-0357 |
- RUBBLE FROM THE REMOVAL OF MISCELLANEOUS STRUCTURES AND EXCESS EXCAVATION WHICH IS TO BE WASTED SHALL BE DISPOSED OF ON SITES TO BE PROVIDED BY THE CONTRACTOR. THESE SITES SHALL BE APPROVED BY THE ENGINEER AS TO SUITABILITY, APPEARANCE AND SITE LOCATION. LOCATIONS THAT, IN THE OPINION OF THE ENGINEER, WILL LEAVE AN UNSIGHTLY APPEARANCE WILL NOT BE APPROVED. ALL DISPOSAL SITES MUST BE APPROVED BY THE KANSAS DEPARTMENT OF HEALTH AND ENVIRONMENT. MATERIAL EITHER STOCKPILED OR DISPOSED OF IN A FLOOD PLAIN WOULD REQUIRE A KANSAS STATE BOARD OF AGRICULTURE PERMIT. ANY MATERIAL DUMPED IN WATERS OF THE UNITED STATES OR WETLANDS IS SUBJECT TO U.S. CORPS OF ENGINEERS PERMITTING REGULATIONS. ANY MATERIAL BURIED OR STOCKPILED BEYOND APPROVED CONSTRUCTION LIMITS WOULD REQUIRE ADDITIONAL ARCHAEOLOGICAL INVESTIGATIONS UNLESS BURIED IN A PREVIOUSLY APPROVED BORROW LOCATION.
 - CONTRACTOR SHALL RESEED AND MULCH ALL DISTURBED AREAS. COST SHALL BE CONSIDERED SUBSIDIARY TO SITE RESTORATION.
 - DEVELOPER FOR THIS PROJECT IS:
RITCHIE ASSOCIATES
8100 E. 22ND NORTH, #1000
WICHITA, KS 67226
CONTACT - KEVIN MULLEN
(316) 684-7300
 - THE CONTRACTOR SHALL NOTIFY RANDY FINUF (316-755-1401) WITH COFFEYVILLE RESOURCES NOT LESS THAN 5 DAYS IN ADVANCE OF INSTALLATION.



VICINITY MAP
No Scale

INDEX TO DRAWINGS

SHEET NO.	DESCRIPTION
1	TITLE SHEET
2	MANHOLE DETAILS
3	INLET DETAILS
4	HOOKUP DETAILS
5-6	LINE 1
7	LINE 1 & 2
8	LINE 3
9	LINE 4
10	GRADING PLAN
11	BUBBLE MAP
12-16	BMP SHEETS
17	PLAT

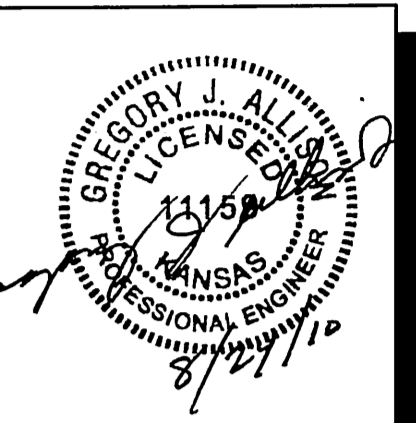
BENCHMARKS

- BM#1 "□" WW @ West end S. Headwall S. side 13th St.
310' W. & 41' S of S 1/4 Cor. 9-27S-2E
Elev.=1377.32
- BM#2 "□" Front center inlet on N. side 13th St.
300' E. of S 1/4 Cor. 9-27S-2E
Elev.=1382.78

AVAILABLE MATERIALS ON SITE *

DESCRIPTION	QUANTITY	SIZE	HEIGHT (w/o Base)	OPENING	OLD STA	LINE	NEW STA	LINE
STRUCTURES								
MH w/base	1	48" Dia	1.83'	15"	22+40.2	4	22+22.5	1
MH w/base	1	48" Dia	2.00'	15", 15"	18+60.1	4	n/a	n/a
MH w/base	1	48" Dia	1.71'	15", 15"	20+69.2	4	20+38.7	1
MH w/base & lp	1	48" Dia	1.91'	12"	14+58.1	6	15+01.1	3
MH w/base	1	48" Dia	1.91'	12", 12"	13+18.2	6	13+61.2	3
MH w/base	1	60" Dia	3.04'	24", 24", 12"	15+87.3	4	15+87.3	1
MH w/base	1	60" Dia	2.79'	30", 24"	13+86.7	4	13+86.7	1
MH w/base	1	48" Dia	1.41'	12", 12"	11+08.9	6	11+51.9	3
Inlet	1	6 x 4	4.17'	18", 8"	12+50.3	7	12+50.3	4
Inlet	1	6 x 4	5.33'	24", 8"	11+32.2	5	11+75.2	2
Inlet Top	2	6 x 4						
MH Top w/Frame & Grate	1							
PIPE								
12" RCP	125 LF							
15" RCP	175 LF							
18" RCP	120 LF							
24" RCP	30 LF							
22"x14" HERCP	6 LF							

* CURSORY INVENTORY REFLECTS AVAILABILITY OF MATERIALS ON SITE THAT MAY BE UTILIZED WITH SOME MODIFICATION BY THE CONTRACTOR. ANY MATERIALS NOT USED BY THE CONTRACTOR, INCLUDING THOSE THAT MAY NOT APPEAR ON THIS TABLE, MUST BE REMOVED FROM THE SITE. COST SUBSIDIARY TO PROJECT.



STORM WATER SEWER PLANS FOR
WATERFRONT RESIDENTIAL
PHASE 2

TITLE SHEET
SHEET TITLE
468-84682
PROJECT NUMBER

DFL / DM / GJA
DESIGNED DRAWN CHECKED

ISSUED
August 2010

REVISED

SHEET NO.
1 of 17