

**STORM WATER SEWER PLANS FOR
WATERFRONT RESIDENTIAL
PHASE 2**

LINE 1
SHEET TITLE
PROJECT NUMBER
06266

DESIGN BY
SRS/DFL
DRAWN BY
JWC/DM
CHECKED BY
GJA

ISSUED
August 2010
REVISED

SHEET NO.
5 of 17

STA. 15+87.3, LINE 1=
STA. 10+00.0, LINE 3
CONST. 5' DIA. TYPE "A"
SPECIAL SHALLOW MANHOLE
w/ DEETER FRAME & GRATE
NO. 1927 OR APPROVED EQUAL
MANHOLE TOP=1384.8
PROVIDE SEDIMENT BARRIER

UNPLATTED
STA. 13+36.7, LINE 1
CONST. 5' DIA. TYPE "A"
SPECIAL SHALLOW MANHOLE
w/DEETER FRAME & GRATE
NO. 1927 OR APPROVED EQUAL
MANHOLE TOP=1384.0
PROVIDE SEDIMENT BARRIER

STA. 10+74.00, LINE 1
INSTALL 30" HERCP END SECTION

REMOVE ABANDONED CLEANOUT AND
FORCE MAIN PIPE AS NEEDED TO
CONSTRUCT STORM SEWER.

SEE
GRADING
PLAN
(SHEET 10)

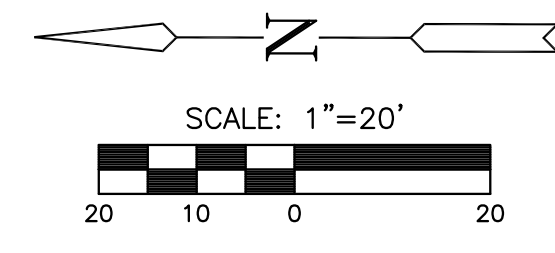
INSTALL 19.5 S.Y. OF
LIGHT STONE RIP-RAP
w/GROUTED STONE
TOEWALL (2'x4'x10')

NOTE: ALL RIPRAP SHALL BE
INSTALLED TO STD. SPEC. WITH
TOE WALLS ON ALL UNPROTECTED
EDGES. THE TOE WALL SHOWN
ON THE PLANS SHALL BE IN
ADDITION TO THE STD. SPEC.

NOTE: CONTRACTOR SHALL MAKE EVERY
EFFORT TO SAVE EXISTING TREES. TREE
TRIMMING/REMOVAL, WHEN REQUIRED, SHALL
BE APPROVED BY THE DEVELOPER AND/OR
ENGINEER PRIOR TO COMMENCEMENT.

CONTRACTOR TO VERIFY LOCATION & DEPTH
OF EXIST. UTILITIES PRIOR TO CONSTRUCTION.

= TREE REMOVAL

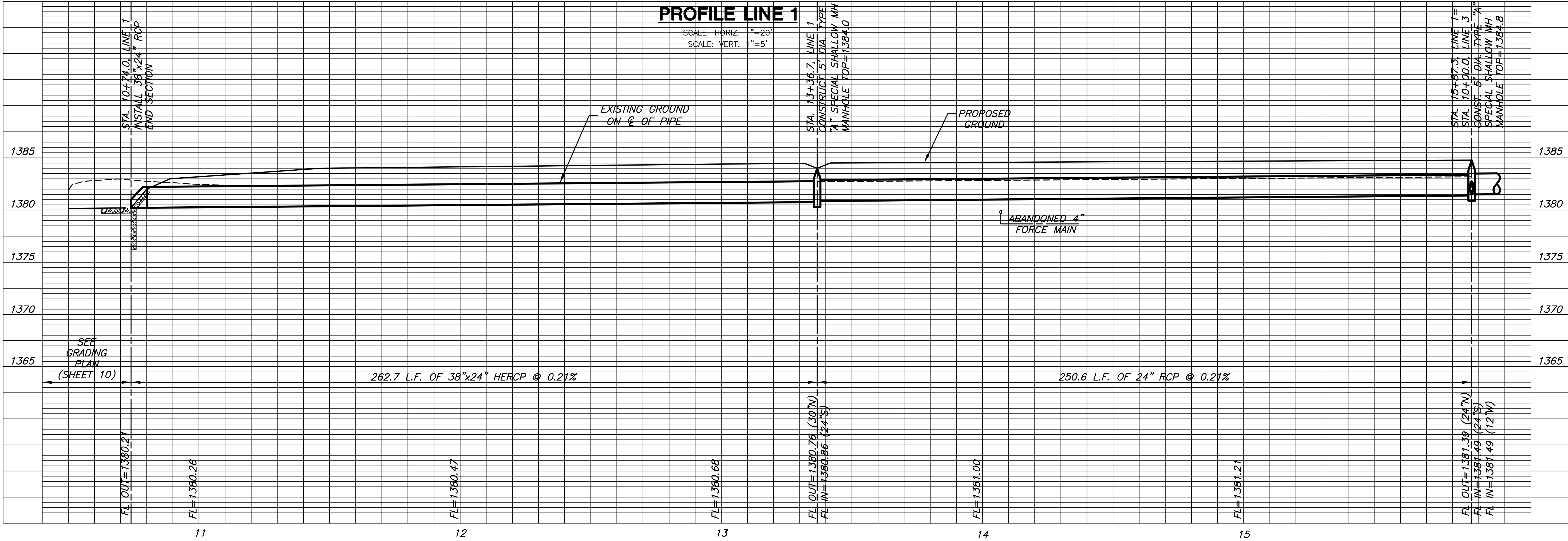


THE WATERFRONT RESIDENTIAL ADDITION

PLAN LINE 1

PROFILE LINE 1

SCALE: HORIZ. 1"=20'
SCALE: VERT. 1"=5'



PLOTTED: Tuesday, August 24, 2010 @ 10:37AM

J:\CIVIL\06266\DWG\SWR\RESIDENTIAL\PHASE 2\06266_D1_P12.DWG