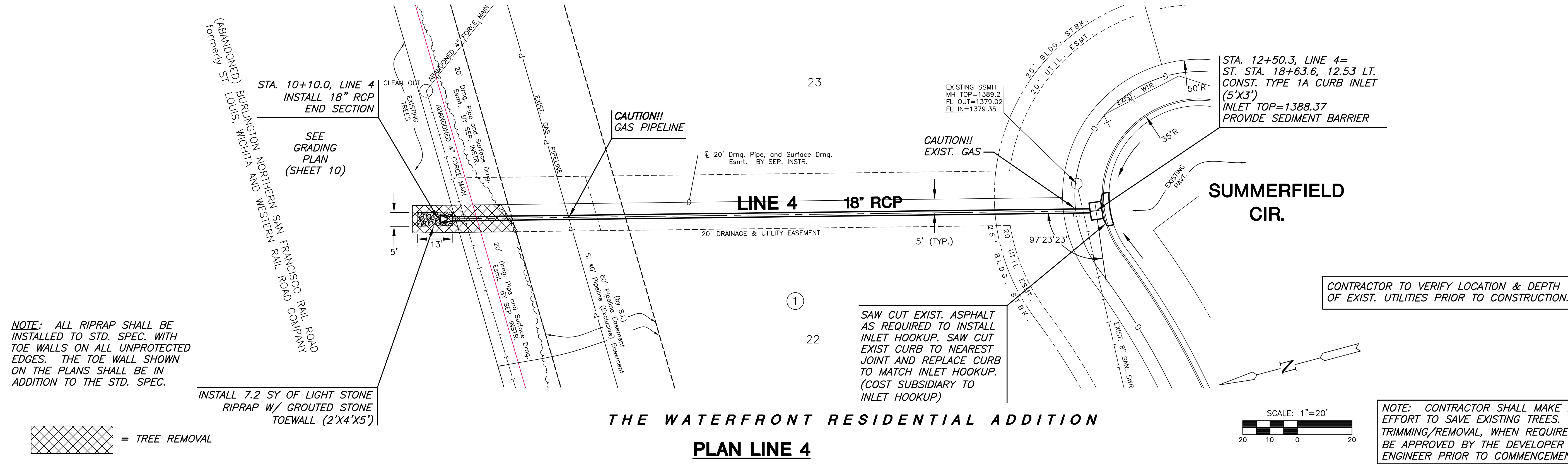


**THE WATERFRONT RESIDENTIAL ADDITION**



NOTE: ALL RIPRAP SHALL BE INSTALLED TO STD. SPEC. WITH TOE WALLS ON ALL UNPROTECTED EDGES. THE TOE WALL SHOWN ON THE PLANS SHALL BE IN ADDITION TO THE STD. SPEC.

= TREE REMOVAL

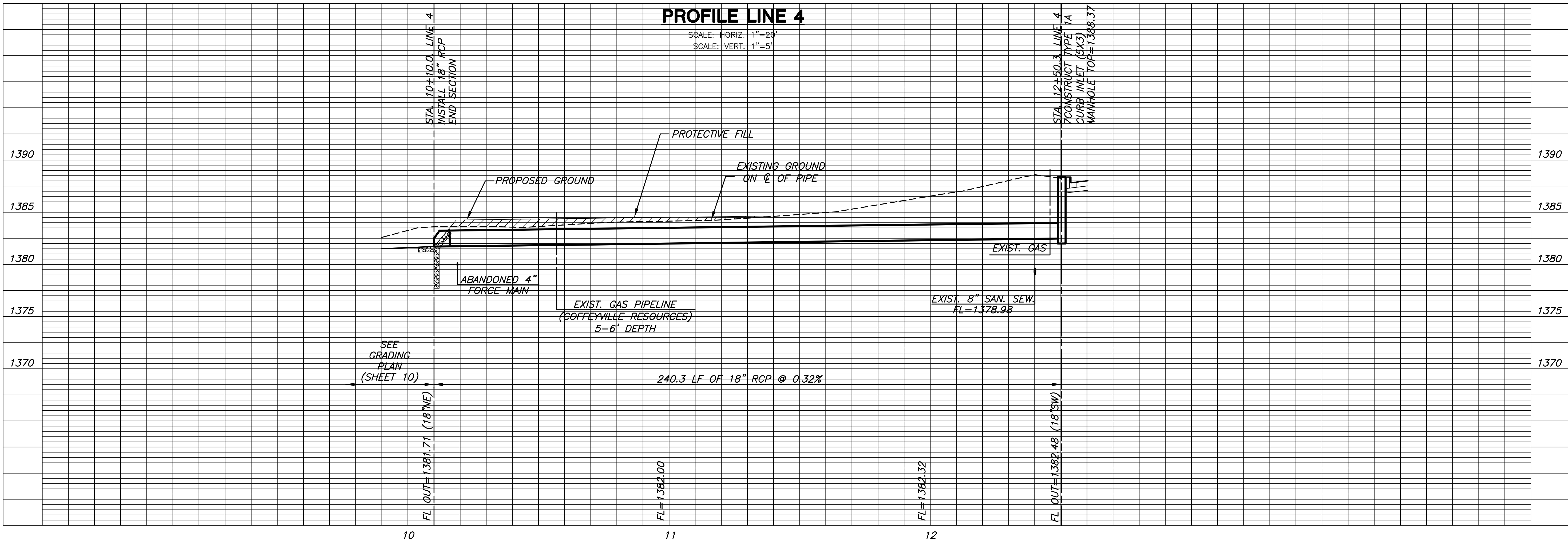
INSTALL 7.2 SY OF LIGHT STONE RIPRAP W/ GROUTED STONE TOEWALL (2'X4'X5')

**THE WATERFRONT RESIDENTIAL ADDITION**

**PLAN LINE 4**

**PROFILE LINE 4**

SCALE: HORIZ. 1"=20'  
SCALE: VERT. 1"=5'



NOTE: CONTRACTOR SHALL MAKE EVERY EFFORT TO SAVE EXISTING TREES. TREE TRIMMING/REMOVAL, WHEN REQUIRED, SHALL BE APPROVED BY THE DEVELOPER AND/OR ENGINEER PRIOR TO COMMENCEMENT.

PLOTTED: Tuesday, August 24, 2010 @ 10:50AM

J:\CIVIL\06266\DWG\SWW\RESIDENTIAL\PHASE 2\06266\_DS\_P12.DWG