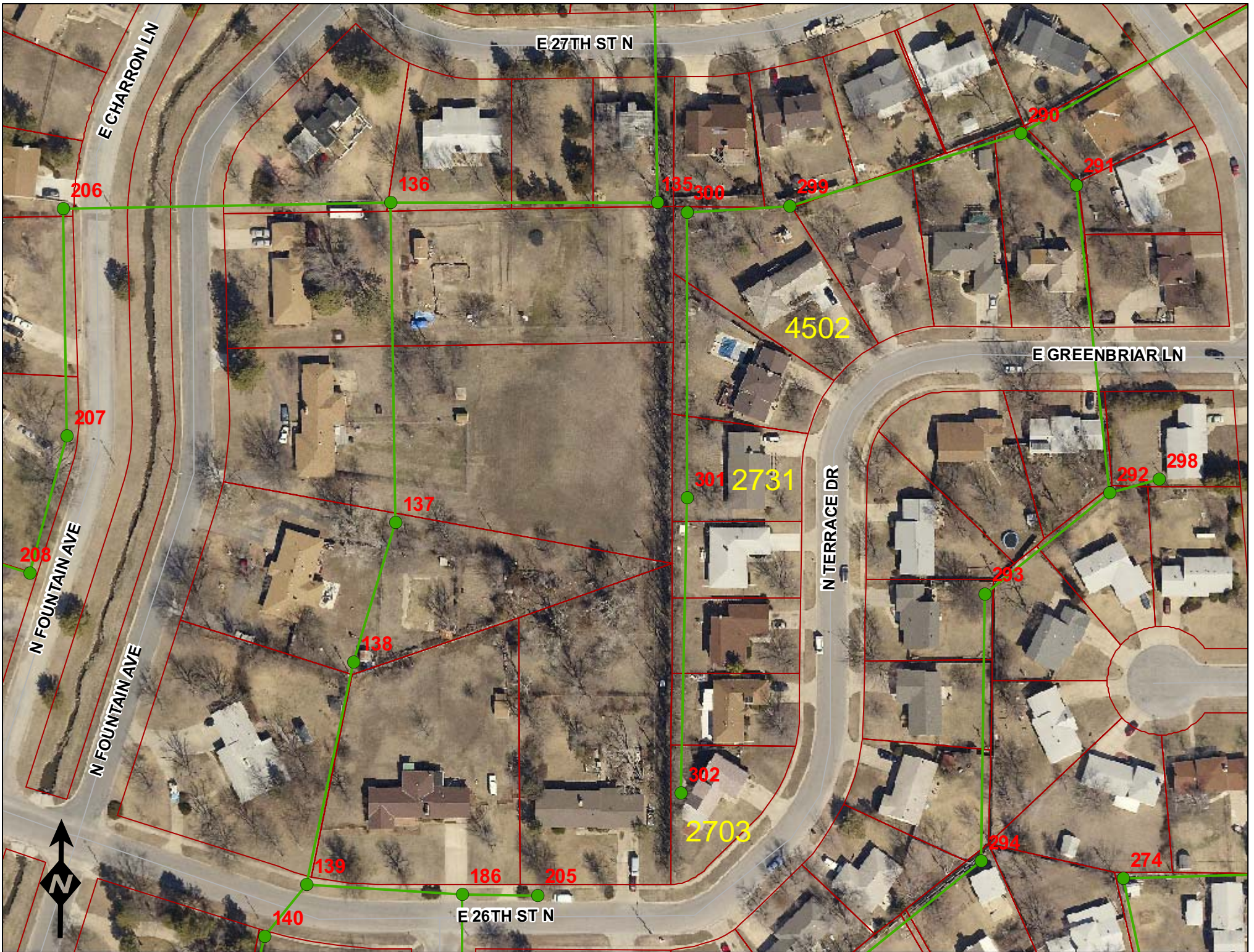


**SITE 1**



# Television Inspection Master Report

7/7/2010

8:20 AM

US Structure: 5750-302      2703 N TERRACE DR      Date Insp: 6/18/2010      Basin: EC02E  
 DS Structure: 5750-301      2731 N TERRACE DR      Dir Televised: Downstream To Upstream

**Pipe Information**

Shape: Round      Project No. : L-179  
 Dia/Ht: 8      Material: VCP  
 Length: 272.0      Slope: 0.993  
 Crew: 694      Tape ID: DVD #0583

Obs. #	VTR Counter	Distance	Location	Description	Rating	Obsrvd (gpm)	Ratings			Remain (gpm)
							Est. (gpm)	Struct	Clean	
1		0.0		5750-301 / DS Manhole / 2731 NORTH TERRACE / tv against the flow						
2		15.3		Crack-Horizontal	4	0.008	10	0	0.008	
3		21.9		Roots	4	0.010	10	25	0.010	
4		24.1		Broken Pipe	3	0.010	60	0	0.010	
5		24.8		Roots	3	0.008	5	8	0.008	
6		38.0		Crack-Horizontal	3	0.004	5	0	0.004	
7		54.1	East	Wye Service	1	0.000	0	0	0.000	
2723 NORTH TERRACE										
8		62.3	Joint	Broken Pipe / Crown Shifting	5	0.060	100	0	0.060	
9		65.3		Broken Pipe / Crown Shifting	3	0.010	60	0	0.010	
10		69.2		Roots	3	0.008	5	8	0.008	
11		136.5	East	Wye Service / roots	4	0.000	60	0	0.000	
2715 NORTH TERRACE										
12		202.9	East	Wye Service	1	0.000	0	0	0.000	
2707 NORTH TERRACE										
13		262.7	East	Wye Service	1	0.000	0	0	0.000	
2703 NORTH TERRACE										
14		271.9		5750-302 / US Manhole / 2703 NORTH TERRACE This manhole raised by Sewer Maintenance August, 2010 Located southwest of the deck.						

Lots of cracks and roots not listed on the tv log.

# Television Inspection Master Report

7/7/2010

8:20 AM

US Structure: 5750-301      2731 N TERRACE DR      Date Insp: 6/18/2010      Basin: EC02E  
 DS Structure: 5750-300      4502 E GREENBRIAR ST      Dir Televised: Upstream To Downstream

**Pipe Information**

Shape: Round      Project No. : L-179  
 Dia/Ht: 8      Material: VCP  
 Length: 264.5      Slope: 1.045  
 Crew: 694      Tape ID: DVD #0583

Obs. #	VTR Counter	Distance	Location	Description	Rating	Obsrvd (gpm)	Ratings			Remain (gpm)
							Est. (gpm)	Struct	Clean	
1		0.0		5750-301 / US Manhole	/	2731 NORTH TERRACE				
2		2.5		Crack-Horizontal	3		0.004	5	0	0.004
3		19.9	East	Break-In Conn	3		0.004	2	0	0.004
2731 NORTH TERRACE										
4		21.3		Crack-Horizontal	4		0.008	10	0	0.008
5		26.1		Crack-Horizontal	4		0.008	10	0	0.008
6		30.9		Broken Pipe	3		0.010	60	0	0.010
7		33.4		Broken Pipe	3		0.010	60	0	0.010
8		40.9		Broken Pipe	3		0.010	60	0	0.010
9		46.1		Broken Pipe	3		0.010	60	0	0.010
10		50.7		Broken Pipe	3		0.010	60	0	0.010
11		57.0		Roots (heavy roots)	4		0.010	10	25	0.010
12		60.2		Broken Pipe	4		0.030	78	0	0.030
13		70.6		Broken Pipe	4		0.030	78	0	0.030
14		126.6	East	Wye Service	1		0.000	0	0	0.000
2737 NORTH TERRACE										
15		172.4		Roots	3		0.008	5	8	0.008
16		258.8		Sag	3		0.000	5	0	0.000
17		262.4	Invert /	Broken Pipe / Shifted / camera cannot pass	4		0.030	78	0	0.030
<b>POINT REPAIR TO BE PERFORMED BY SEWER MAINTENANCE PRIOR TO LINER INSTALLATION</b>										
18		263.0		5750-300 / DS Manhole	1		0.000	0	0	0.000
4502 EAST GREENBRIAR										

Lots of cracks and roots not listed on the tv log.