

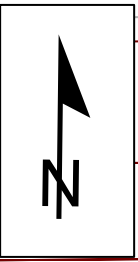
Install 408 lf of 8" Cured-in-Place Liner

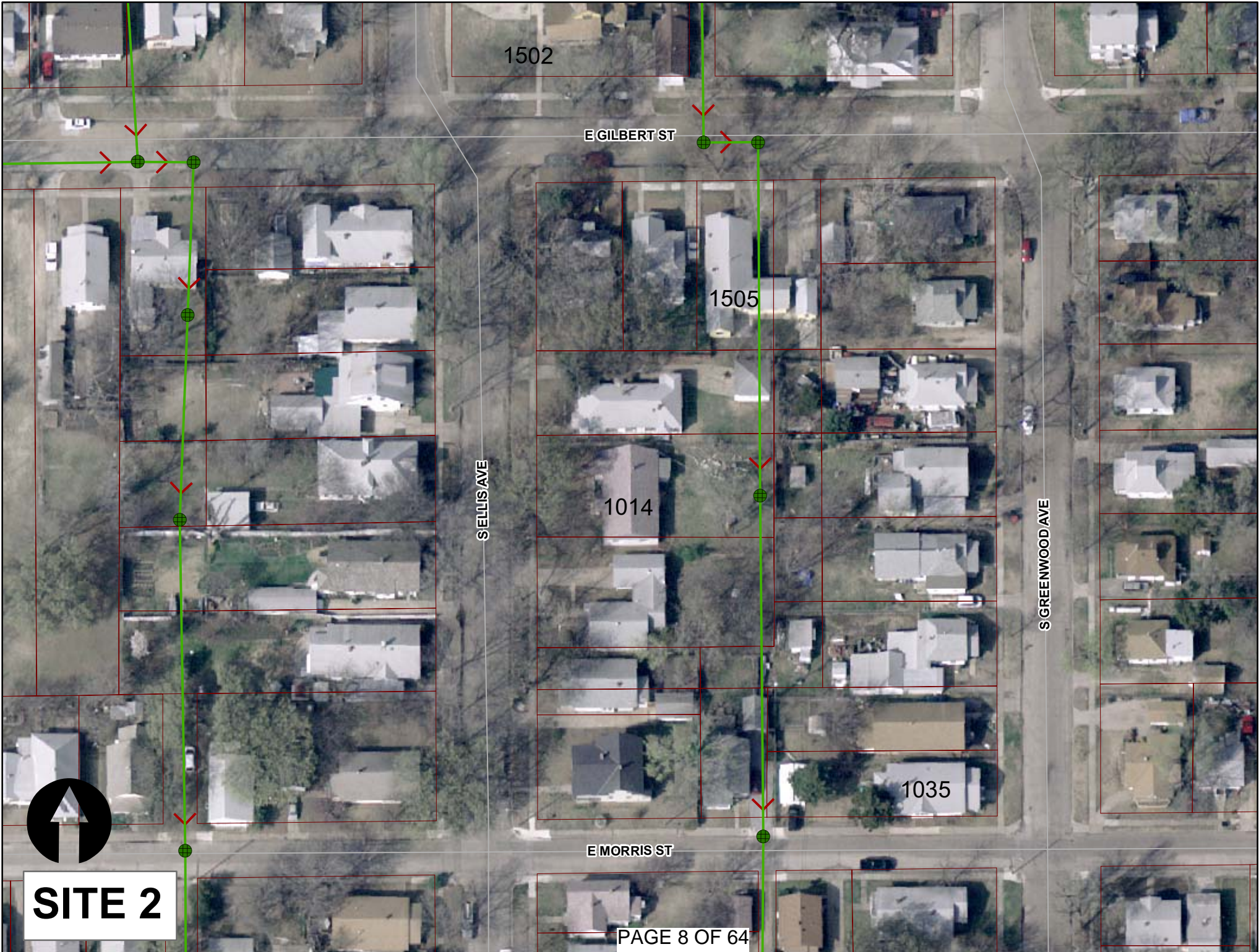
MH # 5546-645
Approx depth = 7.3 ft

MH # 5546-644
Depth not measured

MH # 5546-643
Approx depth = 8.0 ft

SITE 2





1502

E GILBERT ST

1505

SELLIS AVE

1014

S GREENWOOD AVE

1035

E MORRIS ST

SITE 2

Television Inspection Master Report

7/1/2008

10:04 AM

US Structure: 5546-645 1505 E GILBERT ST Date Insp: 4/3/2008 Basin: C02B
 DS Structure: 5546-644 1014 S ELLIS ST Dir Televised: Upstream To Downstream

31	96.2	Lower Left	Broken Pipe	2	0.008	44	0	0.008
32	97.1	East	Wye Service	2	0.000	0	0	0.000
1005 S. GREENWOOD			4" Clay Wye Connection					
33	100.9	Upper Right	Crack-Radial	2	0.002	2	0	0.002
34	105.8	Upper Right	Crack-Radial	2	0.002	2	0	0.002
35	108.2	West	Break-In Conn	2	0.002	0	0	0.002
1501, 1505 E. GILBERT			4" Break In Connection					
36	114.8		Sealed Off Wye West	1	0.000	0	0	0.000
			4" Clay Wye Connection					
37	118.3	Upper Right	Crack-Radial	2	0.002	2	0	0.002
38	120.7	Lower Left	Crack-Radial	2	0.002	2	0	0.002
39	123.3	Lower Left	Crack-Radial	3	0.004	5	0	0.004
40	125.8	Upper Right	Crack-Radial	3	0.004	5	0	0.004
41	130.8	Upper Left	Crack-Radial	3	0.004	5	0	0.004
42	136.0	Upper Right	Crack-Radial	2	0.002	2	0	0.002
43	140.4	West	Wye Service	4	0.000	60	0	0.000
1012 S. ELLIS / broken outside of the main /			4" Clay Wye Connection					
						NEEDS REPAIR IF ACTIVE		
44	141.6	East	Break-In Conn	1	0.001	0	0	0.001
1017 S. GREEN WOOD			4" PVC Saddle "T" Conn					
45	146.6	Lower Left	Crack-Radial	2	0.002	2	0	0.002
46	148.6	Lower Left	Crack-Radial	3	0.004	5	0	0.004
47	151.2	Crown	Crack-Radial	2	0.002	2	0	0.002
48	153.8	Upper Right	Crack-Radial	2	0.002	2	0	0.002
49	156.3	Lower Left	Crack-Radial	2	0.002	2	0	0.002
50	158.6	Upper Right	Crack-Radial	3	0.004	5	0	0.004
51	160.8	Lower Right	Crack-Radial	2	0.002	2	0	0.002
52	165.3		Sealed Off Wye West	1	0.000	0	0	0.000
53	166.3	Lower Left	Crack-Radial	2	0.002	2	0	0.002
54	171.1	Upper Right	Crack-Radial	2	0.002	2	0	0.002
55	176.0	Joint	Offset	2	0.000	0	0	0.000
56	181.2	Upper Right	Crack-Radial	2	0.002	2	0	0.002
57	183.9	Lower Right	Crack-Radial	2	0.002	2	0	0.002
58	188.5	Lower Right	Crack-Radial	2	0.002	2	0	0.002
59	191.3	Upper Right	Crack-Radial	2	0.002	2	0	0.002
60	192.9		Sealed Off Wye West	2	0.002	0	0	0.002
			4" Clay Wye Connection					
61	193.9	Lower Left	Crack-Radial	3	0.004	5	0	0.004
62	196.0	East	Wye Service	2	0.000	0	0	0.000
1019 S. GREENWOOD			4" Clay Wye Connection					
63	196.4	Lower Right	Broken Pipe	3	0.010	60	0	0.010
64	201.5	Upper Left	Broken Pipe	3	0.010	60	0	0.010
65	201.8	East	Break-In Conn	4	0.008	60	0	0.008
1019 S. GREENWOOD			4" Break In Connection /					
			Rough & jagged edges on service pipe					
66	203.8	Lower Right	Broken Pipe	3	0.010	60	0	0.010
67	208.9	DS Manhole	5546-644					

Television Inspection Master Report

7/1/2008

10:04 AM

US Structure:	5546-644	1014 S ELLIS ST	Date Insp:	4/3/2008	Basin:	C02B
DS Structure:	5546-643	1510 E MORRIS ST	Dir Televised:	Upstream To Downstream		
23	87.4	Upper Right	Crack-Radial	2	0.002	2 0 0.002
24	97.0	Upper Left	Crack-Radial	2	0.002	2 0 0.002
25	106.1		Sealed Off Wye West 4" Clay Wye Connection	1	0.000	0 0 0.000
26	109.5	Upper Left	Crack-Radial	3	0.004	5 0 0.004
27	115.9	West	Break-In Conn	3	0.004	2 0 0.004
1036 S. ELLIS			4" Break In Connection			
28	119.7	Upper Right	Crack-Radial	2	0.002	2 0 0.002
29	131.3		Sealed Off Wye West 4" Clay Wye Connection	1	0.000	0 0 0.000
30	132.7	East	Wye Service	2	0.000	0 0 0.000
1025 S. GREENWOOD			4" Clay Wye Connection			
31	135.1	Lower Right	Broken Pipe	3	0.010	60 0 0.010
32	144.4	Upper Left	Crack-Radial	3	0.004	5 0 0.004
33	149.5	Upper Right	Crack-Radial	3	0.004	5 0 0.004
34	154.7	Lower Left	Crack-Radial	2	0.002	2 0 0.002
35	155.3	West	Wye Service	4	0.000	60 0 0.000
1038 S. ELLIS- ALSO- 1510 E. M			NEEDS REPAIR			
Broken outside of the main						
36	157.5	East	Break-In Conn	3	0.004	2 0 0.004
1033 S. GREENWOOD / rough & jagged tap						
37	162.5	Lower Left	Crack-Radial	2	0.002	2 0 0.002
38	164.8	West (in crown)	Break-In Conn	3	0.004	2 0 0.004
1035 S. GREENWOOD			4" Break In Connection			
39	165.1	Lower Left	Crack-Radial	2	0.002	2 0 0.002
40	167.3	Lower Right	Crack-Radial	3	0.004	5 0 0.004
41	172.1	Lower Left	Crack-Radial	2	0.002	2 0 0.002
42	177.0	Invert	Crack-Radial	2	0.002	2 0 0.002
43	179.8	Upper Left	Crack-Radial	2	0.002	2 0 0.002
44	180.2		Sealed Off Wye West 4" Clay Wye Connection	2	0.002	0 0 0.002
45	184.0		Sealed Off Wye East 4" Clay Wye Connection	1	0.000	0 0 0.000
46	197.6	Lower Left	Crack-Radial	2	0.002	2 0 0.002
47	199.9	DS Manhole 5546-643		2	0.000	0 0 0.000