

MH # 4848-350  
Abandon Manhole per City Spec  
Approx depth = 5.4 ft  
(pavement removal and  
replacement shall be incidental.)

Abandon 60 lf of pipe:  
(by sealing off the pipe, per City Spec, at  
the west inside wall of MH 4848-337)

Westlink Ave

Westlink Ave

190'

150'

9326

160'

9th Street North

990

9411

9323

MH # 4848-337  
Approx depth = 6.2 ft

MH # 4848-338  
Approx depth = 6.2 ft

240'

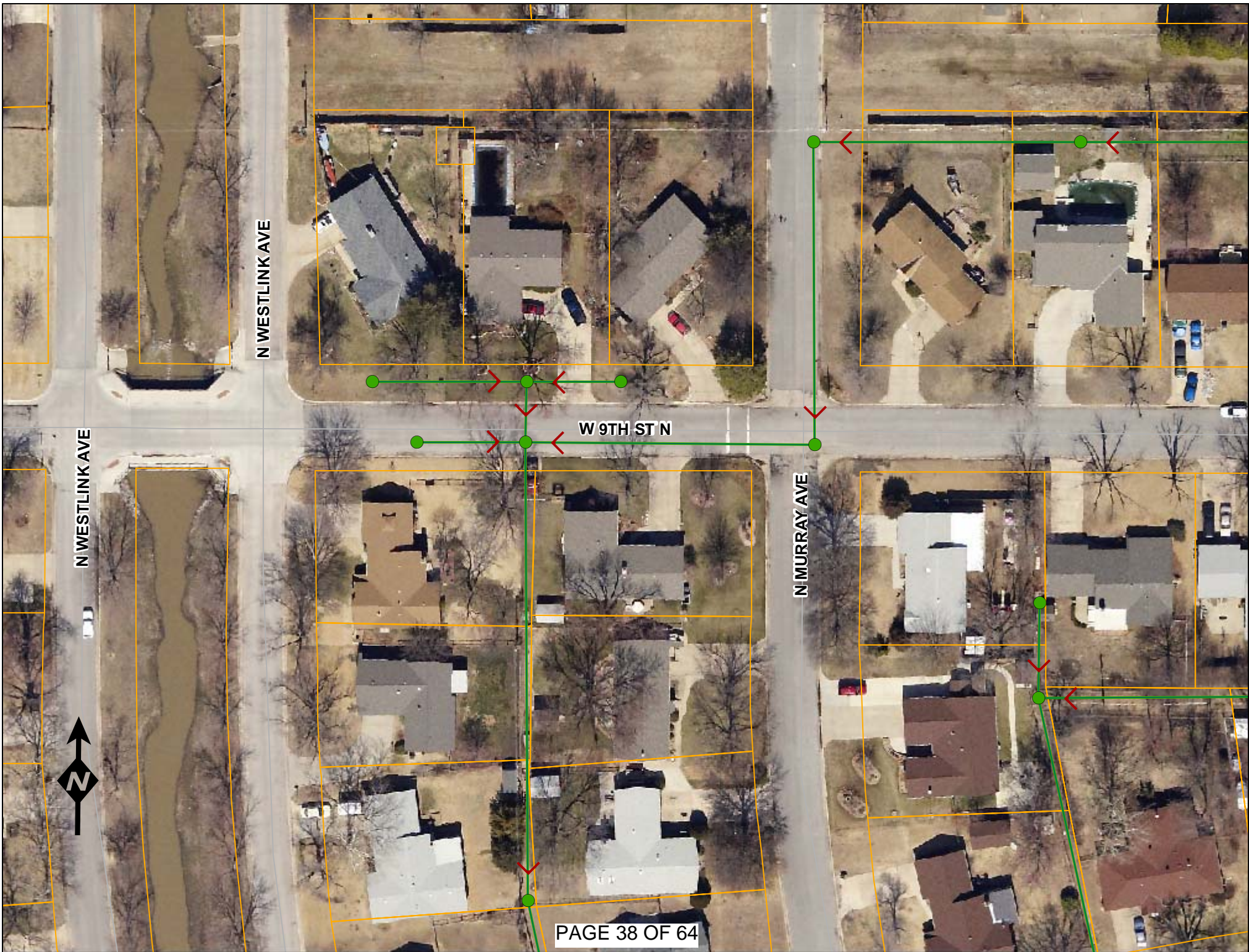
Murray

Install 160 lf of 8" Cured-in-Place Liner

Hickory



SITE 6



N WESTLINK AVE

N WESTLINK AVE

W 9TH ST N

N MURRAY AVE



# Television Inspection Master Report

1/25/2010

8:08 AM

US Structure: 4848-338      980 N MURRAY ST      Date Insp: 1/22/2009      Basin: W06A  
 DS Structure: 4848-337      990 N WESTLINK AVE      Dir Televised: Upstream To Downstream

**Pipe Information**

Shape: Round      Project No. : K-063  
 Dia/Ht: 8      Material: VCP      Index:  
 Length: 160.0      Slope: 0.400      Surface:

**Inspection Information**

Crew: 694      Tape ID: DVD #0465

Obs. #	VTR Counter	Distance	Location	Description	Rating	Obsrvd (gpm)	Ratings			Remain (gpm)
							Est. (gpm)	Struct	Clean	
1		0.0		US Manhole 4848-338	1		0.000	0	0	0.000
980 NORTH MURRAY										
2		95.5		Crack-Radial	3		0.004	5	0	0.004
3		110.9		Roots	3		0.008	5	8	0.008
4		113.9		Roots	3		0.008	5	8	0.008
5		114.3		Crack-Radial	3		0.004	5	0	0.004
6		123.1		Roots	3		0.008	5	8	0.008
7		131.9		Roots	3		0.008	5	8	0.008
8		141.7		Roots	3		0.008	5	8	0.008
9		144.6		Roots	2		0.004	2	4	0.004
10		158.2		Sealed Off Wye	1		0.000	0	0	0.000
11		160.5		DS Manhole 4848-337	1		0.000	0	0	0.000
990 NORTH WESTLINK										

Prior to the cleaner being used, some of these roots were fairly heavy. Pipe needs lined.